

LAKERIDGE PUMP STATION LOT
V.M.S. 9968
STOKES TOWNSHIP
December 6, 1982

The following described real estate situated in Stokes Township, Logan County, Ohio and being part of Virginia Military Survey 9968 and more particularly described as follows:

Commencing at a nail in the center of State Route 368 at the South end of Dream Bridge, said nail being Station 106+76.3 as shown on Logan County Engineers Plan L-28; thence with the centerline of said S.R.368, S.44°33'E. 322.0 feet to a railroad spike, said spike being the beginning point of this description; thence N.45°27'E. 50.0 feet to an iron pipe; thence S.31°54'E. 71.7 feet to an iron pipe; thence S.45°27'W. 34.4 feet to a railroad spike in the center of said S.R.368 as shown in Logan County Engineers Field Book 700, page 40; thence with said centerline N.44°33'W. 70.0 feet to the place of beginning.

Containing 0.07 acres more or less.

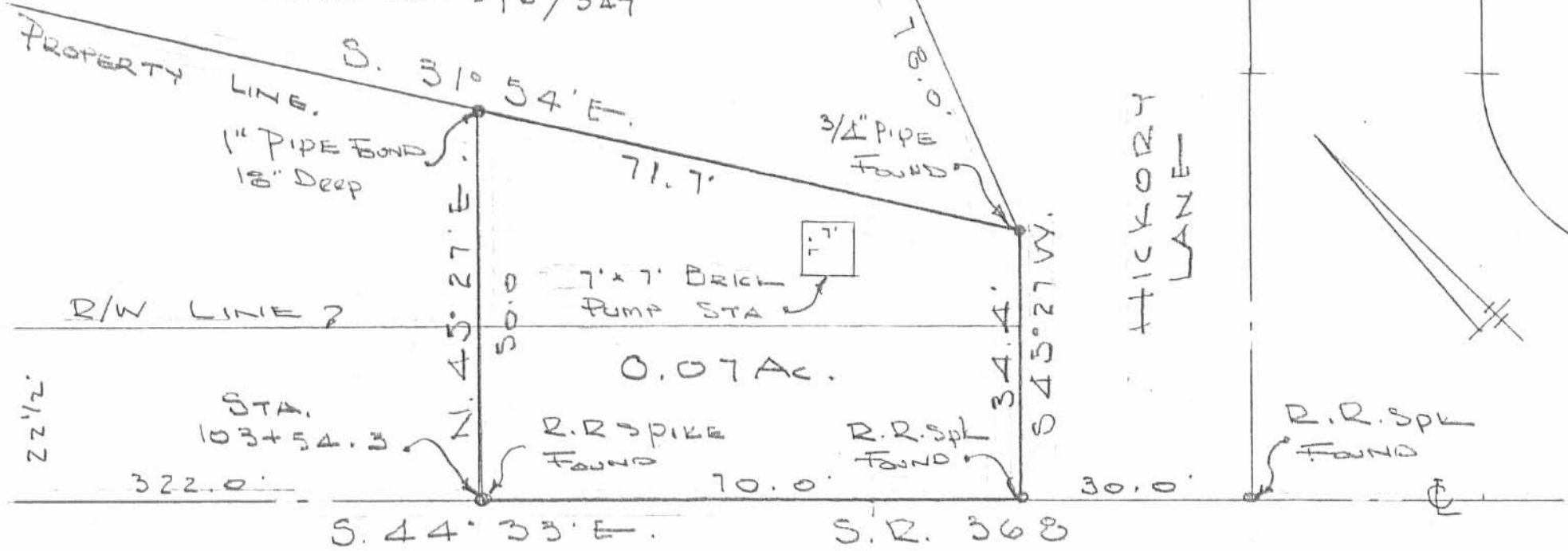
4372 ID

INDEXED ON MAP

FREDRICK D. TAYLOR & UX

1.136 AC.

DEED VOL. 396/347



LAKERIDGE PUMP STATION LOT

V.M.S. 9968

STOKES TOWNSHIP

LOGAN COUNTY, OHIO

NOVEMBER 17, 1982

SCALE 1" = 20'

CHESTER R. KURTZ - COUNTY ENG.

4372 IP

INDEXED ON MAP

REF:

LOGAN COUNTY ENG.

F.B. 700 PG. 40

PLAN L-28

RESURVEYED BY

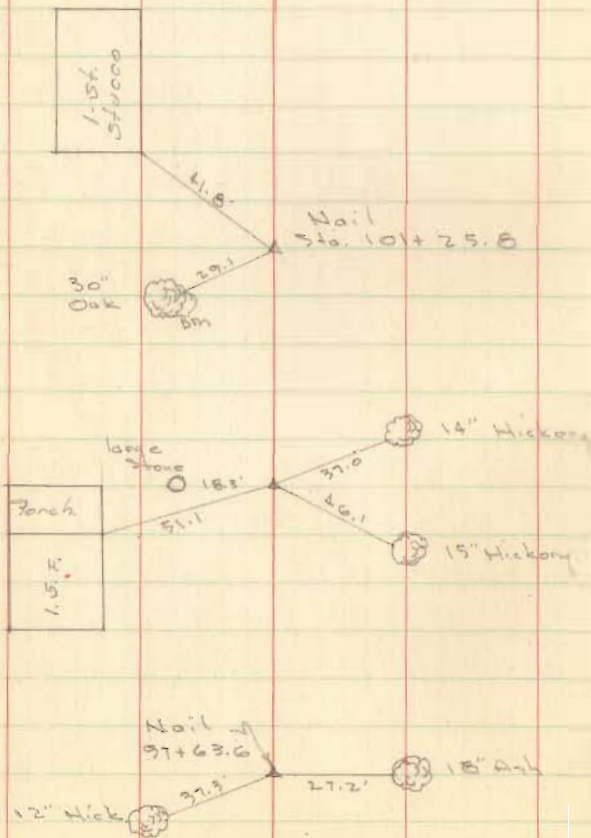
DAN L. DODSON

REG SURVEYOR 4270

FB 700

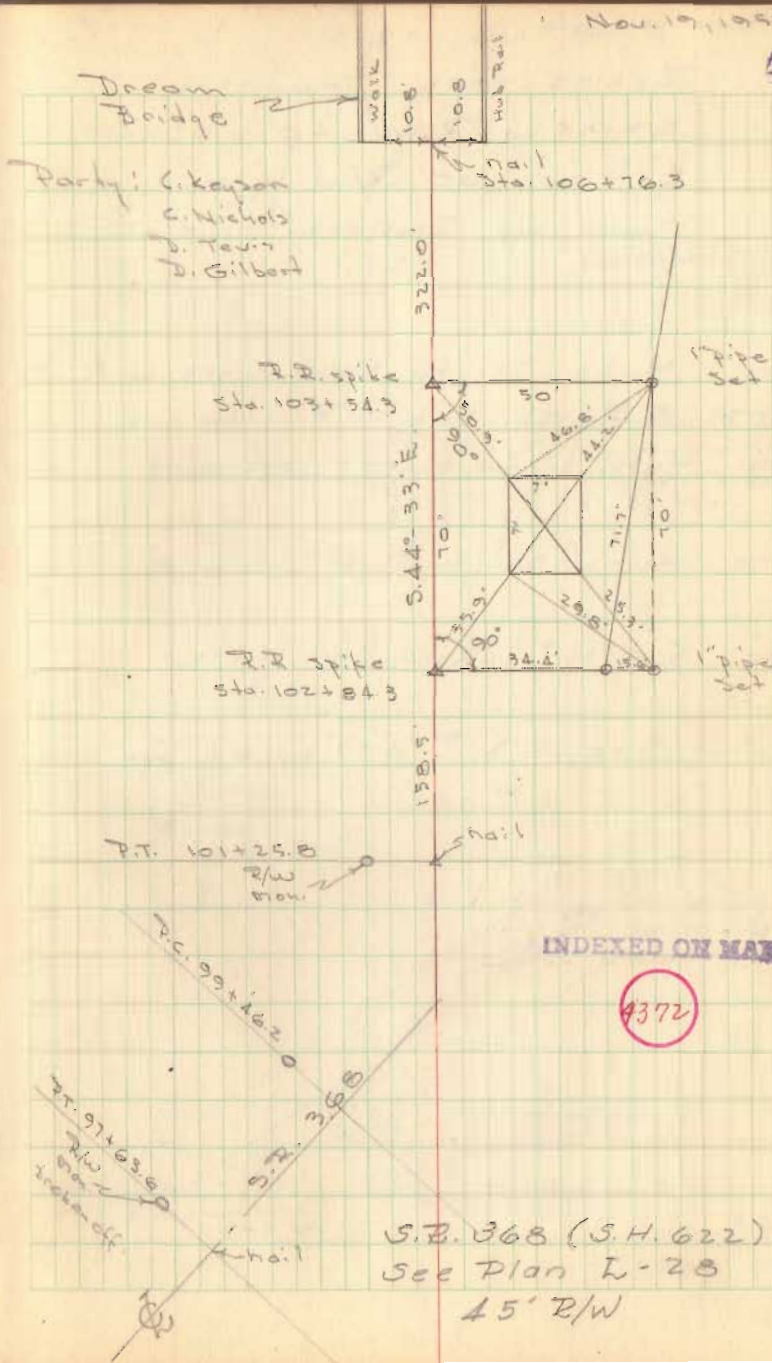
Survey of
Pump House
Wakeridge Island
I.W.S.S. Dist. #4, Ext. #1

Note: Not orig. staked
50' x 70'



Nov. 19, 1956

40



INDEXED ON MAP

4372

S.B. 368 (S.H. 622)
See Plan L-28
45' B/W

LAKERIDGE Pump Sta. Lot

FB 709

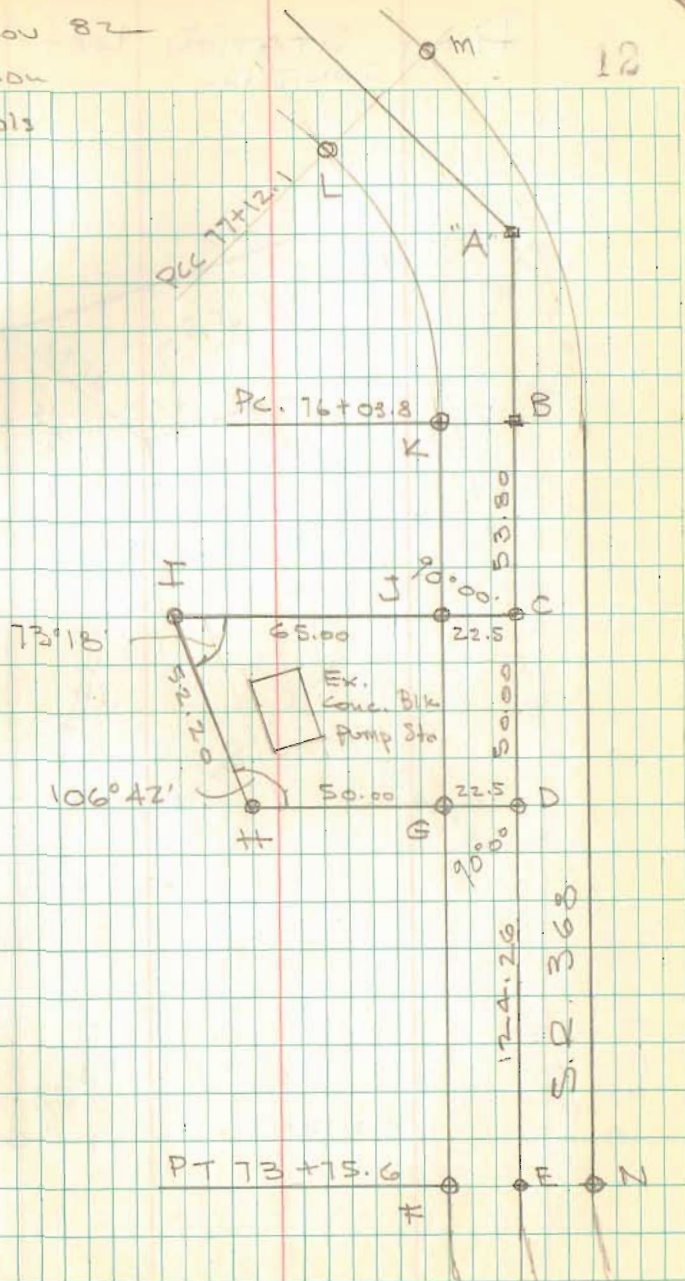
- A = 1/2" Head Bolt Found 3" deep
- B = " " " " " 6" "
- C = Railroad spike Set
- D = " " " " "
- E = P-k nail Found 2" deep
- F = R/W Mon Found Broken
- G = 1" ϕ Bar Set
- H = " " " "
- I = " " " "
- J = " " " "
- K = R/W Mon Found leaning - straightened
- L = " " " " 12" deep
- M = " " " " 1" deep
- N = " " " " Broken

See Plan L-28 for S.P. 368

NOTE: G-U-H-I Removed
Jan 28, 1983 C.D.N.

9 Nov 82
Dodson
Nichols
Dill

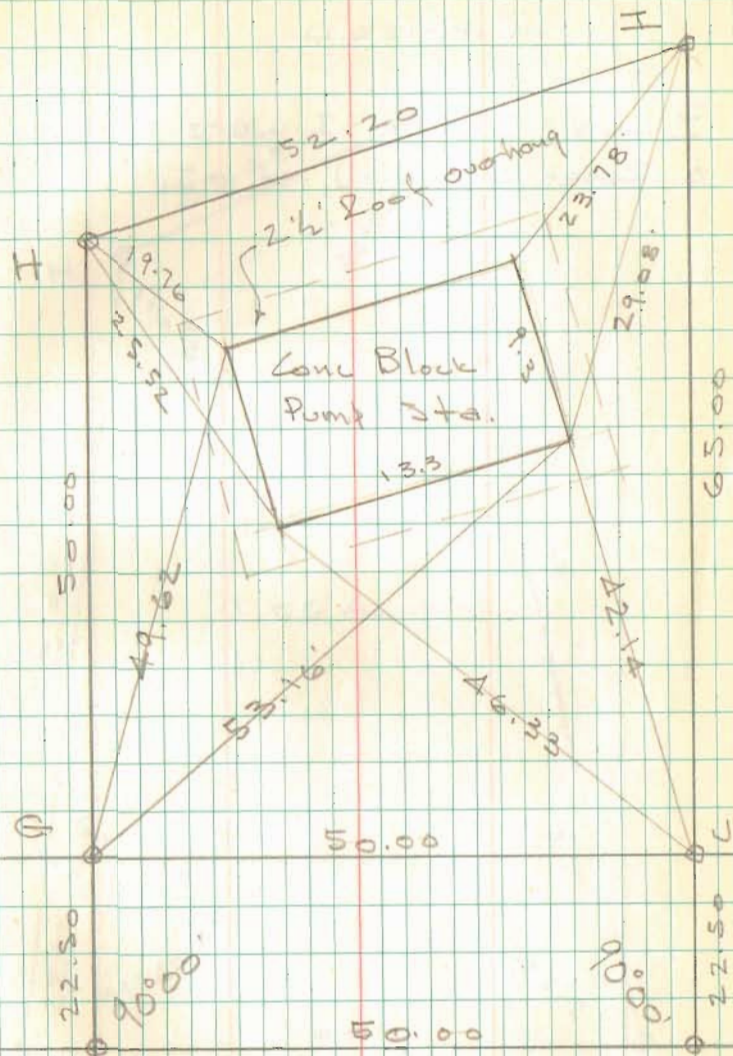
12



Pump Station Lot
CONT'D.
FB 709

9 Nov. 82

13



Pump Station Lot

FB 709

Revised

Bars G-J-H-I were removed
& Reset At G₁-J₁-H₁-I₁

C. Nichols
C. Dill

28 Jan 83
29°

14

