

FB 700

SURVEY OF AVONDALE STREETS

FOR STOKES TWP. TRUSTEES

AVONDALE No. 2 - J-35

- A = 1"  $\emptyset$  Bar Set
- B = 1"  $\emptyset$  Bar Set
- C = 1/2"  $\emptyset$  Bar Found - 6" deep
- D = 1"  $\emptyset$  Bar Set
- E = 3/4" Pipe Found
- F = 3/4" Pipe Found
- G = old Hub Found
- H = 3/4" Pipe Found
- I = 1"  $\emptyset$  Bar Set
- J = 3"x3" Conc. Mon. Found

Found "E-F-G", produced this line to "D",  
 set capped nail in  $\oplus$  Lake Drive  
 Meas north from "F" to "C", found pin - ok  
 Meas south from "F" to "J", found conc. mon. - ok  
 Set on nail  $\oplus$  LAKE DR. turned 83°-58',  
 meas. north on  $\oplus$  520.11', set capd. nail,  
 set on nail, sighted "K", set "B", meas.  
 from "B" to "A", set pin @ 360.0'.  
 Meas South from nail @ "D" on  $\oplus$  200.0 feet  
 set capd. nail - set on nail turned 83°-58', set  
 pin @ "I"

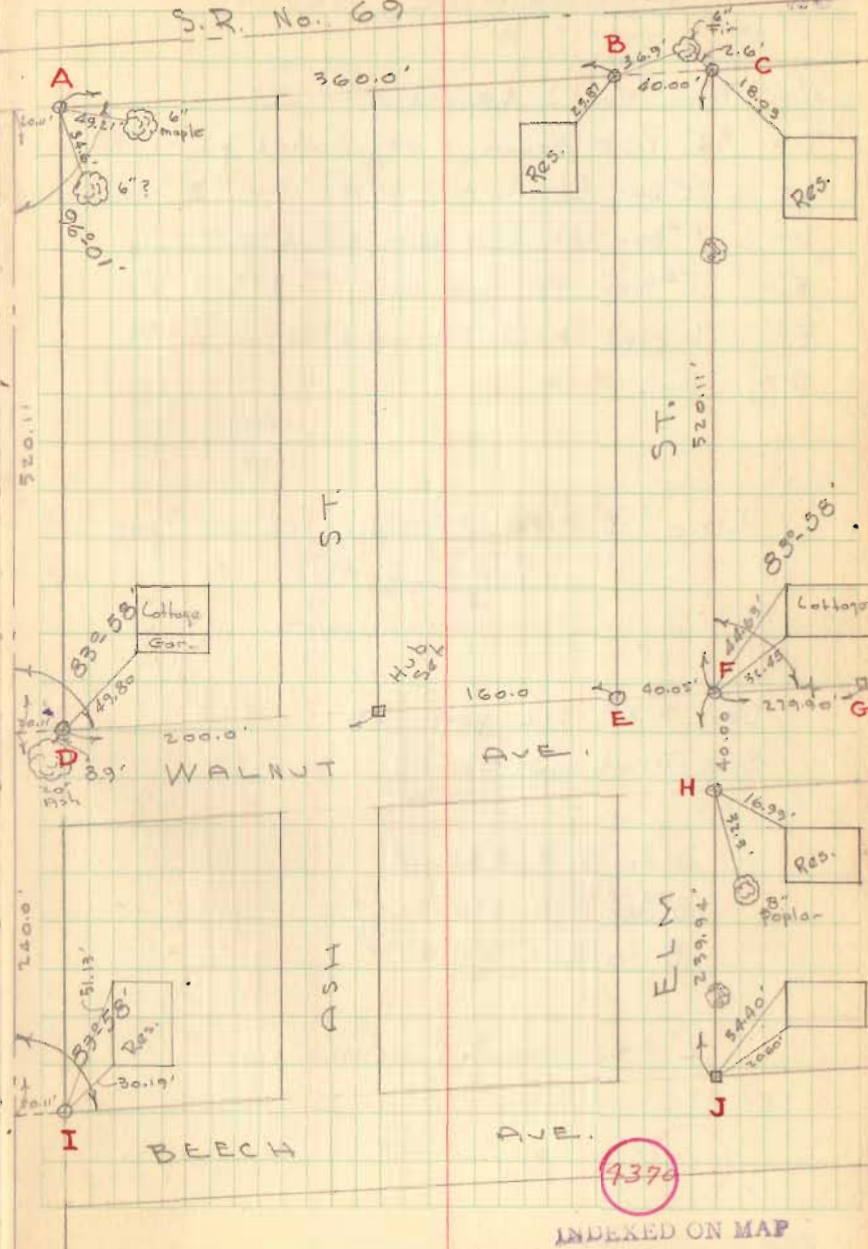
LAKE DRIVE

Dodge - Travis  
 Cino X - Leggett

6-5-61  
 75°

S.R. No. 69

29



4376

INDEXED ON MAP

FB 700

AVONDALE No. 5

- A = Pipe Found & used
- B = 3/4" Pipe Found - as indicated on "J-51"
- C = 1/2" Bar found - 239.89' from "B" - ok for line
- D = 1" Bar Set - line only @ 270.51'
- E = 1" Bar Set line only @ 277.22'
- F = 1" pipe Found - as indicated on "J-51"
- G = Hub Set

Line "B" - "F" as indicated on Plot "J-51"

See F.B# 512 page 38 ?

See Plot J-51

B to F = 432.04'

B to D = 270.51'

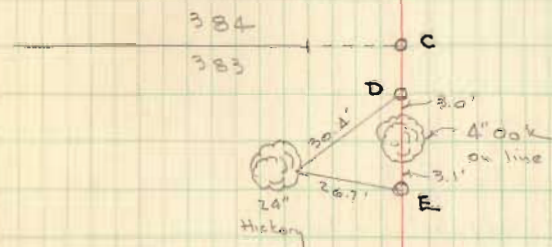
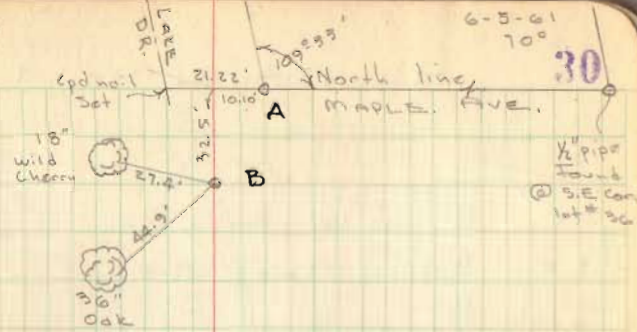
B to E = 277.22'

"C" - set by Bill Lewis

Dodson - Lewis  
Cira - Liggitt

6-5-61  
70°

30



Low Block  
Incinerator



377 376

4370

INDEXED ON MAP



FB 700

AVONDALE No. 1

- A = "□" head bolt Found
- B = 1/2" pipe Found
- C = 3/8" Pipe Found
- D = 1/2" Pipe Found
- E = 1/2" Pipe Found
- F = 1" Pipe Found - Cop top
- G = 1/2" Pipe Found
- H = 1/2" " "
- I = 3/4" φ Bar Found
- J = 3/4" φ Bar Found
- K = 3/4" pipe Found - in Conc.
- L = " " " " "

See Plot J-34

