

Co. Hwy. No. 270
near Lakeview
Bridge 270-0.65

Nichols Kaucher
Buckenroth Thompson T
Crites

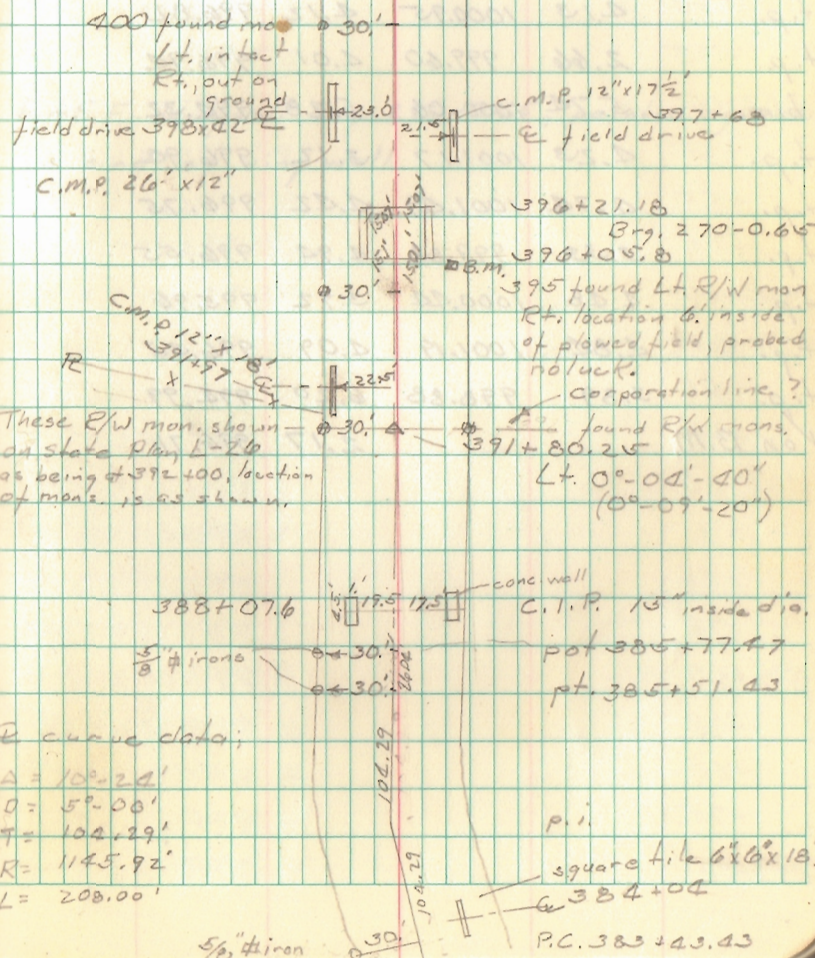
29 June 1967
overcast 65° slight breeze
Gurley 20"

○ = R/W man.

P.K. nails set 382+00 to 400+00
on even stations.

INDEXED ON MAP

4356



Station	Angle	Distance
383+93.43	1°15'	- 50'
384+48.43	2°30'	- 50'
384+93.43	3°45'	- 50'
385+43.43	5°00'	- 50'
385+51.43	5°12'	- 8'