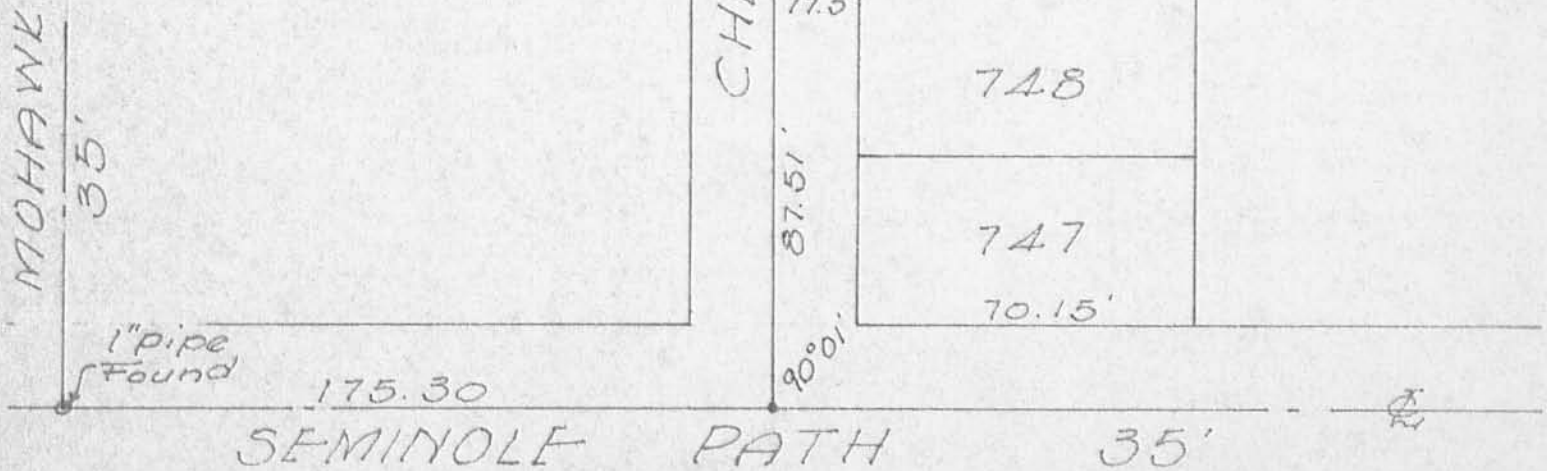


SURVEY OF LOTS 755-749
 CHIPPEWA PARK No.1
 STOKES TOWNSHIP
 LOGAN COUNTY, OHIO
 SEPT. 9, 1967
 SCALE 1" = 40'

Dan L. Dodson

Dan L. Dodson
 Reg. Surveyor 4270
 Bellefontaine, Ohio

- = 5/8" φ Bar set
- = 18" tkd. hub set
- = P-K nail on Φ



4170 IP

INDEXED ON MAP

