

SURVEY OF
 LOTS 876 - 879
 CHIPPEWA PARK No. 1
 APRIL 17, 1965
 SCALE 1" = 30'

3839 IP

INDEXED ON MAP

Dan L. Dodson
 Dan L. Dodson
 Reg. Surveyor 4270
 Bellefontaine, Ohio

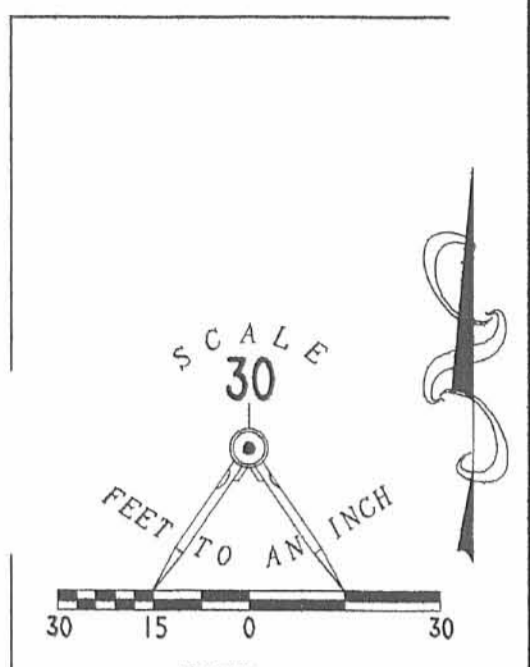
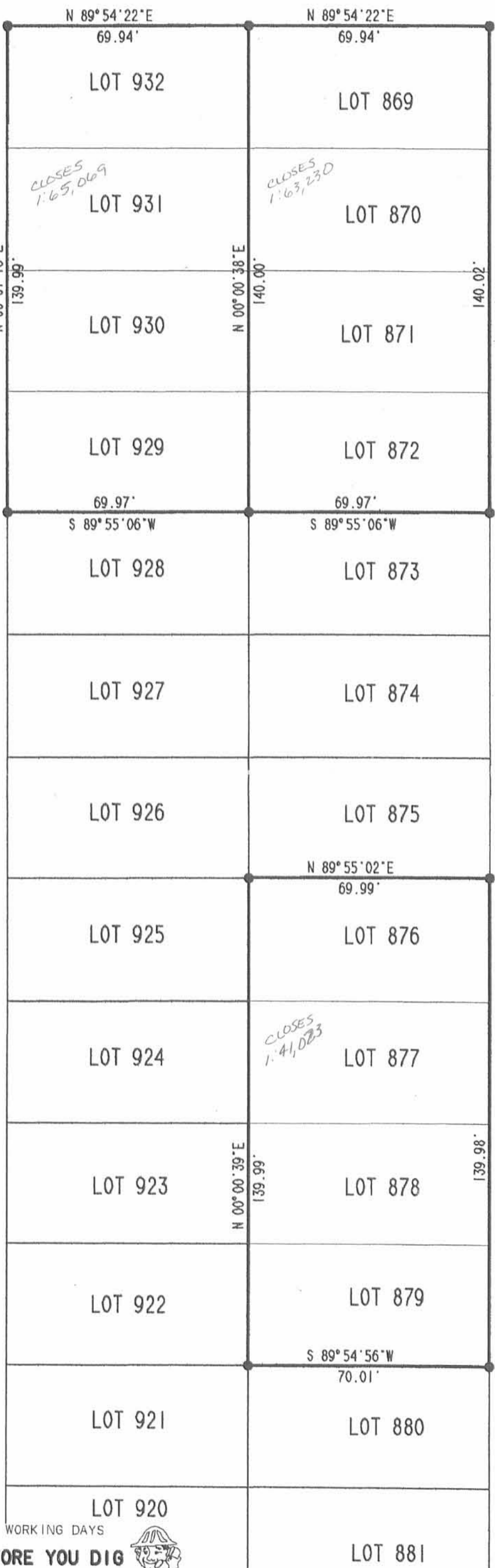
A = 1/2" Pipe Found
 B = 1" # Bar Found
 C = Tkd Hub Set
 □ = 1/2" # Bar Set

2003-7-02 SML/ML

BLUE JACKET PATH (35')

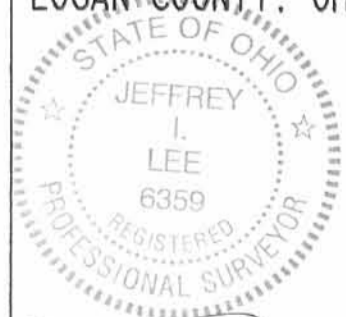
MOHAWK PATH (35')

CHEROKEE PATH (35')



- LEGEND**
- 5/8 INCH IRON ROD SET
 - 5/8 INCH IRON ROD FOUND
 - ⊙ 2 INCH IRON PIPE FOUND
 - ⊗ 1/2 INCH IRON PIPE FOUND

RETRACEMENT SURVEY OF
 LOTS 872 THRU 869
 LOTS 876 THRU 879 AND
 LOTS 929 THRU 932
 CHIPPEWA PARK ALLOTMENT NO. 1
 PLAT CABINET A. SLIDE 223
 VIRGINIA MILITARY SURVEY 12276
 STOKES TOWNSHIP
 LOGAN COUNTY, OHIO



SURVEYED BY: ORIGINAL STAMP IN GREEN

Jeffrey I. Lee
 JEFFREY I. LEE
 PROFESSIONAL SURVEYOR 6359
 FEBRUARY 28, 2002
 REVISED MARCH 6, 2002

COPYRIGHT 2002 BY:
 LEE SURVEYING & MAPPING CO., INC.
 117 North Madriver Street
 BELLEFONTAINE, OHIO 43311
 (937) 593-7335

2 WORKING DAYS
BEFORE YOU DIG
 CALL TOLL FREE **800-362-2764**
 OHIO UTILITIES PROTECTION SERVICE.

INDEXED ON MAP
 3039

LOTS 876-877-878-879

(HIPPEWA No. 1

A = 1/2" pipe Found

B = 1" Bar Found

C = tkd Hub Set

D = " " " flush with pavement

E = 1/2" Bar Set (Dug for old hubs
no luck)

F = hub set

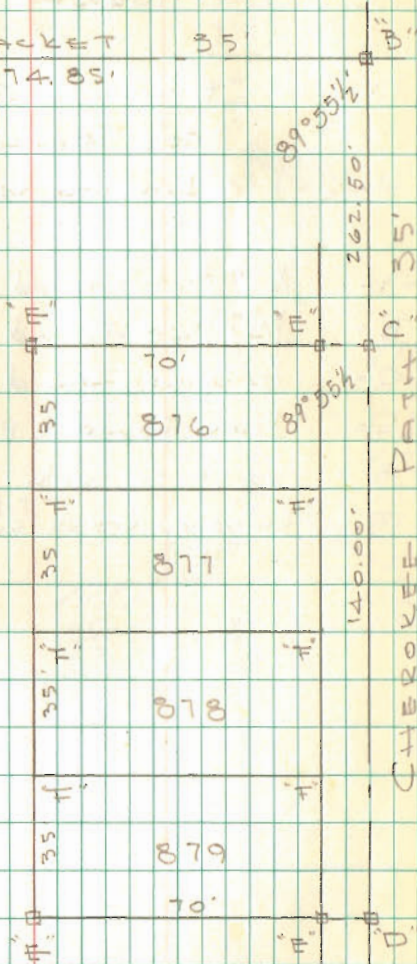
4-17/65

550

Dodson
Line

1

A BLUE JACKET 35'
174.85'



INDEXED ON MAP
3839

INDEXED ON MAP
3839

11-3-14

Lee Surveying and Mapping Co., Inc.



Land Surveys • Topography • Subdivisions • Construction Layout

117 N. Madriver St.
Bellefontaine OH 43311



Phone: (937) 593-7335
Fax: (937) 593-7444
surveys@lsminc.us

WELL LOT 0.001 ACRE

Lying in Virginia Military Survey 12276, Stokes Township, Logan County, Ohio.

Being out of Lot 870 of Chippewa Park No. 1 as recorded in Plat Cabinet A, Slide 223 of the Logan County Records of Plats and being more particularly described as follows:

Commencing on a 5/8 inch iron rod set on the northwest corner of Lot 930 of Chippewa Park No. 1.

THENCE, with the north line of Lot 930 and Lot 871, N 89°-54'-44"E, a distance of 73.45 feet to a 5/8 inch iron rod set at the TRUE POINT OF BEGINNING.

THENCE, N 00°-05'-16"W, a distance of 7.37 feet to a 5/8 inch iron rod set.

THENCE, N 89°-54'-44"E, a distance of 5.00 feet to a 5/8 inch iron rod set.

THENCE, S 00°-05'-16"E, a distance of 7.37 feet to a 5/8 inch iron rod set on the north line of Lot 871.

THENCE, with the north line of Lot 871, S 89°-54'-44"W, a distance of 5.00 feet to the point of beginning.

Containing 0.001 acre.

Property is subject to any and all previous easements and rights-of-way of record.

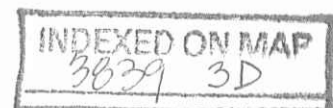
The basis for bearings is the west right-of-way of Cherokee Path, being S 00°-00'-00"E, and all other bearings are from angles and distances measured in a field survey by Lee Surveying and Mapping Co., Inc. on October 23, 2014.



Description prepared by:

William K. Bruce
Professional Surveyor 7437
October 23, 2014

33221014

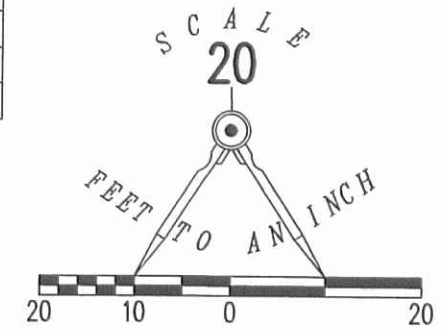


11-3-14

APPROVED

BLUE JACKET PATH (35')

LINE	BEARING	DISTANCE
L1	N 00°05'16" W	7.37'
L2	N 89°54'44" E	5.00'
L3	S 00°05'16" E	7.37'



LEGEND:

- ⊙ 1/2 INCH IRON PIPE FOUND
- 5/8 INCH IRON ROD FOUND
- 5/8 INCH IRON ROD SET WITH PLASTIC I.D. CAP STAMPED "LSM 7437"

RETRACEMENT SURVEY OF
 LOTS 871, 872, 929 AND 930
 AND SURVEY OF 0.001 ACRE OUT OF
 LOT 870
 CHIPPEWA PARK NO. 1
 PLAT CABINET A, SLIDE 223
 VIRGINIA MILITARY SURVEY 12276
 STOKES TOWNSHIP
 LOGAN COUNTY, OHIO

SURVEYED BY:

William K. Bruce

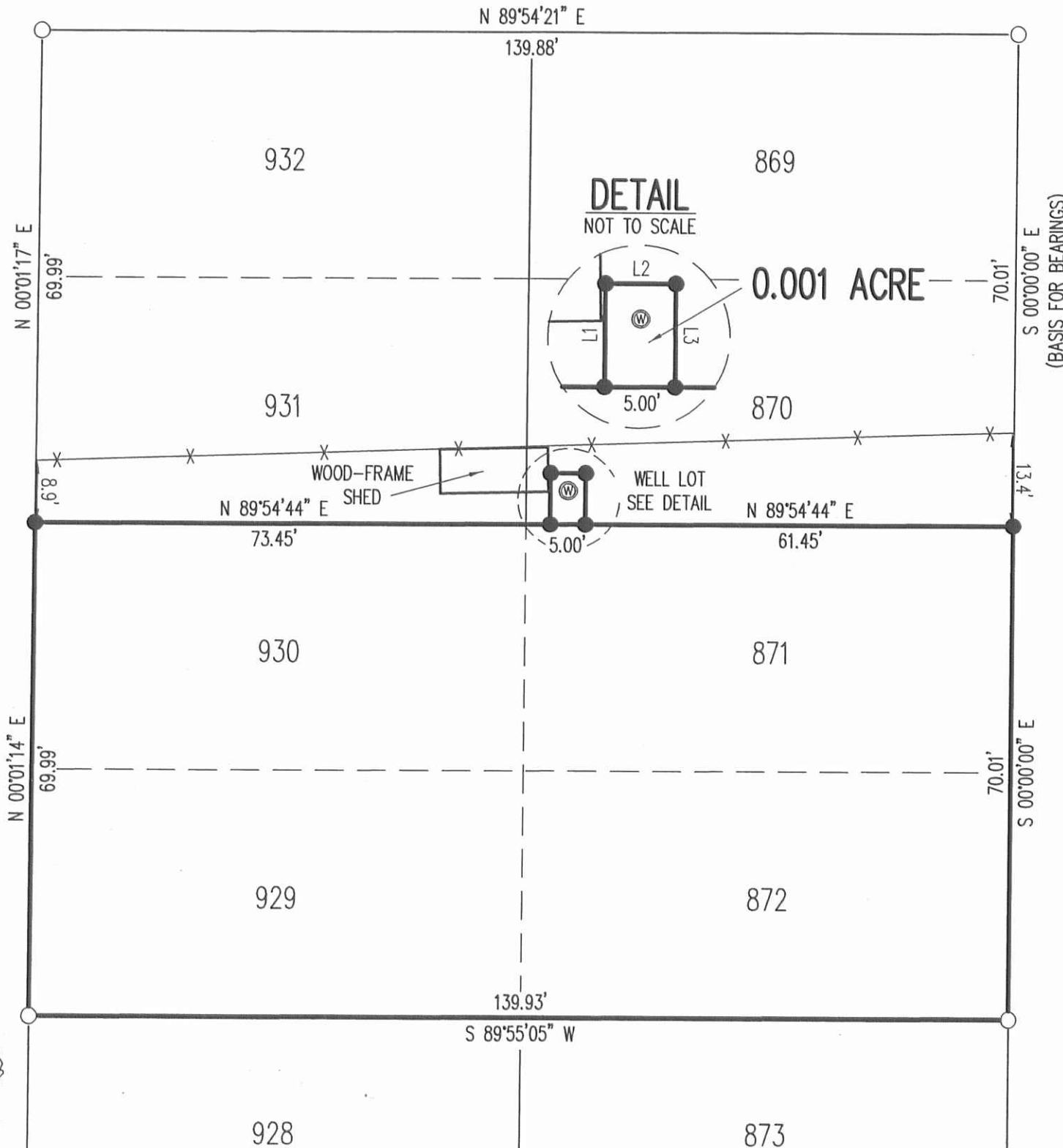
WILLIAM K. BRUCE
 PROFESSIONAL SURVEYOR 7437
 OCTOBER 23, 2014



COPYRIGHT 2014 BY:
LEE SURVEYING & MAPPING CO., INC.
 117 North Modriver Street
 BELLEFONTAINE, OHIO 43311
 (937) 593-7335
 WWW.LSMINC.US
 surveys@lsminc.us
 KSS D1014 33221014 L-3322-3

MOHAWK PATH (35')

CHEROKEE PATH (35')



DETAIL
NOT TO SCALE

0.001 ACRE

WOOD-FRAME SHED

WELL LOT
SEE DETAIL

2 WORKING DAYS
BEFORE YOU DIG
 CALL TOLL FREE **800-362-2764**
 OHIO UTILITIES PROTECTION SERVICE.

INDEXED ON MAP
 3839 3P