

THEISEN SURVEY

V. M. S. 12276  
Stokes Township  
Logan County, Ohio  
August 23, 1958

The following described real estate situated in Stokes Township, Logan County, Ohio and being part of Virginia Military Survey 12276 and more particularly described as follows:

Beginning at an iron pipe at the intersection of the center line of Seminole Path and the east line of Thomas Addition No. 1, Chippewa Park; thence N. 83°-01' E. 62.9 feet to an iron pin; thence S. 7°-02' E. 70.2 feet to an iron pin in the State Line; thence with said State Line S. 25°-47' W. 115.7 feet to an iron pipe in said Thomas' east line; thence with said east line N. 6°-52' W. 167.6 feet to the place of beginning.

Containing 0.17 of an acre more or less.

(2508) - 1D

INDEXED ON MAP

Theisen Survey  
Stokes Twp  
v.m.s. 12276

A =  $\frac{3}{4}$ " pipe found -  $\frac{1}{2}$  of Seminole Path

B =  $\frac{5}{8}$ "  $\phi$  bar set

C =  $\frac{5}{8}$ "  $\phi$  bar set, where Theisen says a state line mon. was located, was removed when leaching bed was constructed.

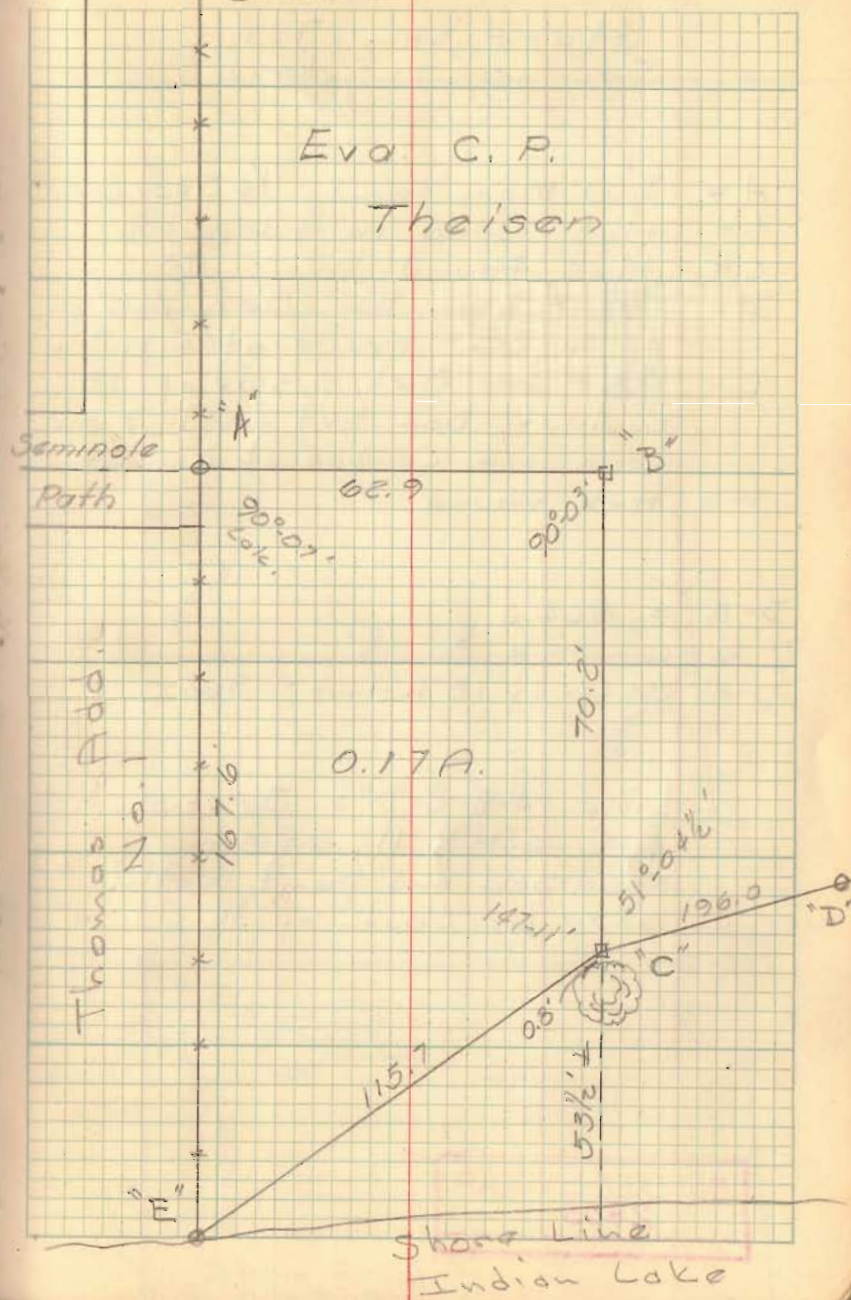
"D" = State Line Mon. Found, S. Hwy. Dept. R/W Mon.

E = 2" pipe found, State Line Mon., S.E. cor. of Thomas

INDEXED ON MAP  
2508

Dodson  
Geeslin

Aug. 23, 1958 20



Theisen Survey  
Stokes Twp

A = R/W Man found - State line

B  $\frac{5}{8}$ " Iron Set where Theisen says a R/W Man. was located, it was removed when a leaching bed was placed here?

C 2" pipe found - State line

Blc 3, pg 20

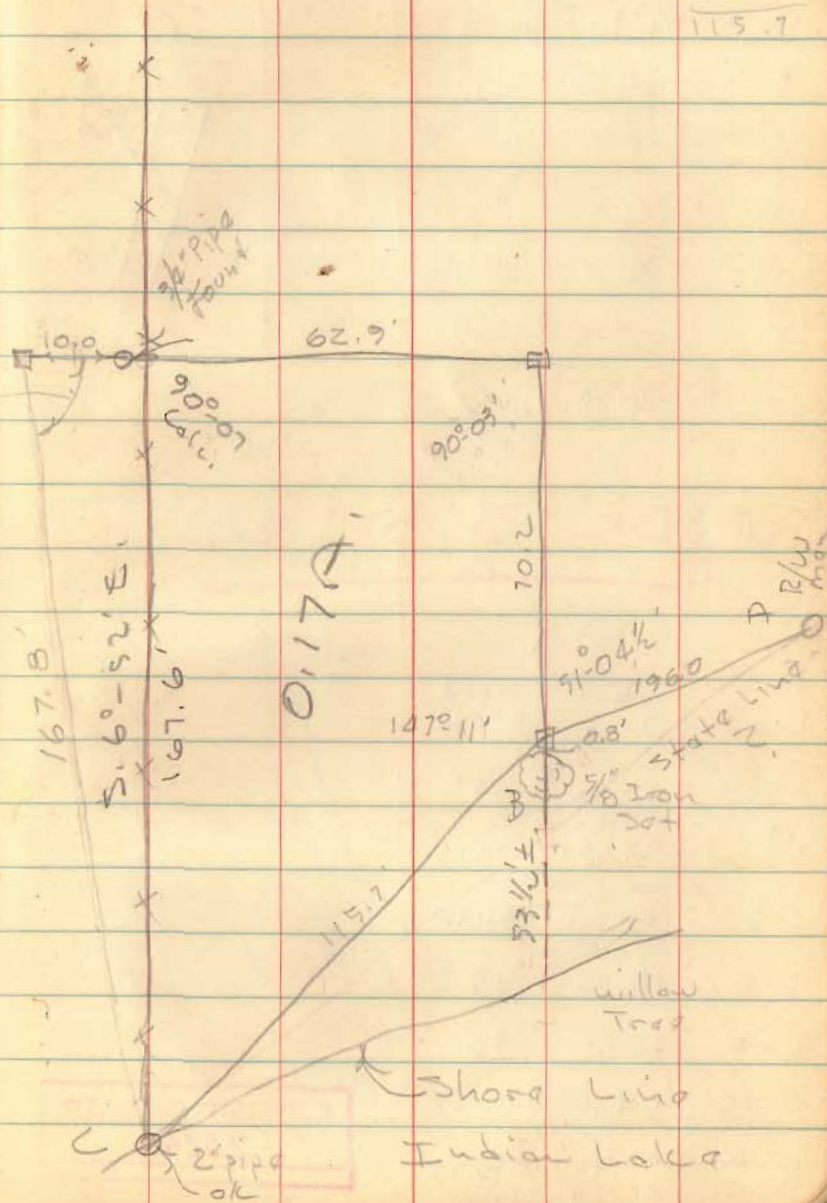
Dodson  
Geoslin

Aug. 23, 1958  
72

88  
30.7  

---

115.7



INDEXED ON MAP  
2508