

# HOSSELMAN SURVEY

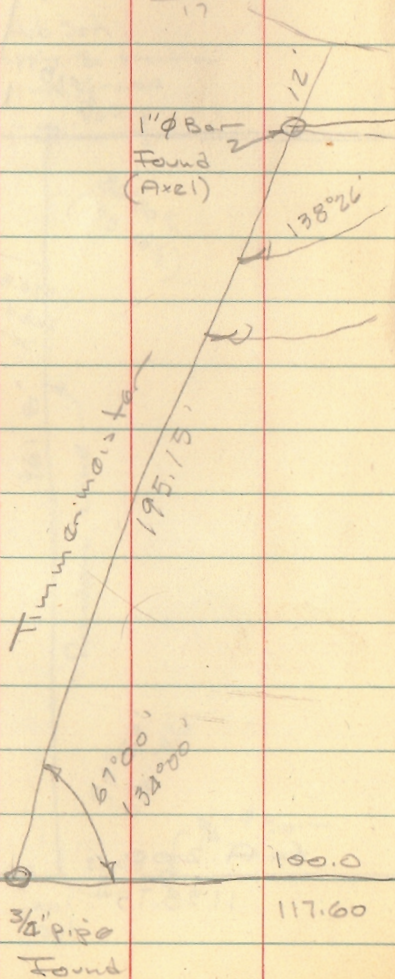
WOLF ISLAND

See Pg 56

369 60	179.60
128 10	103.14
241 50	76.46

2	77.12
	154.25
	14
	17

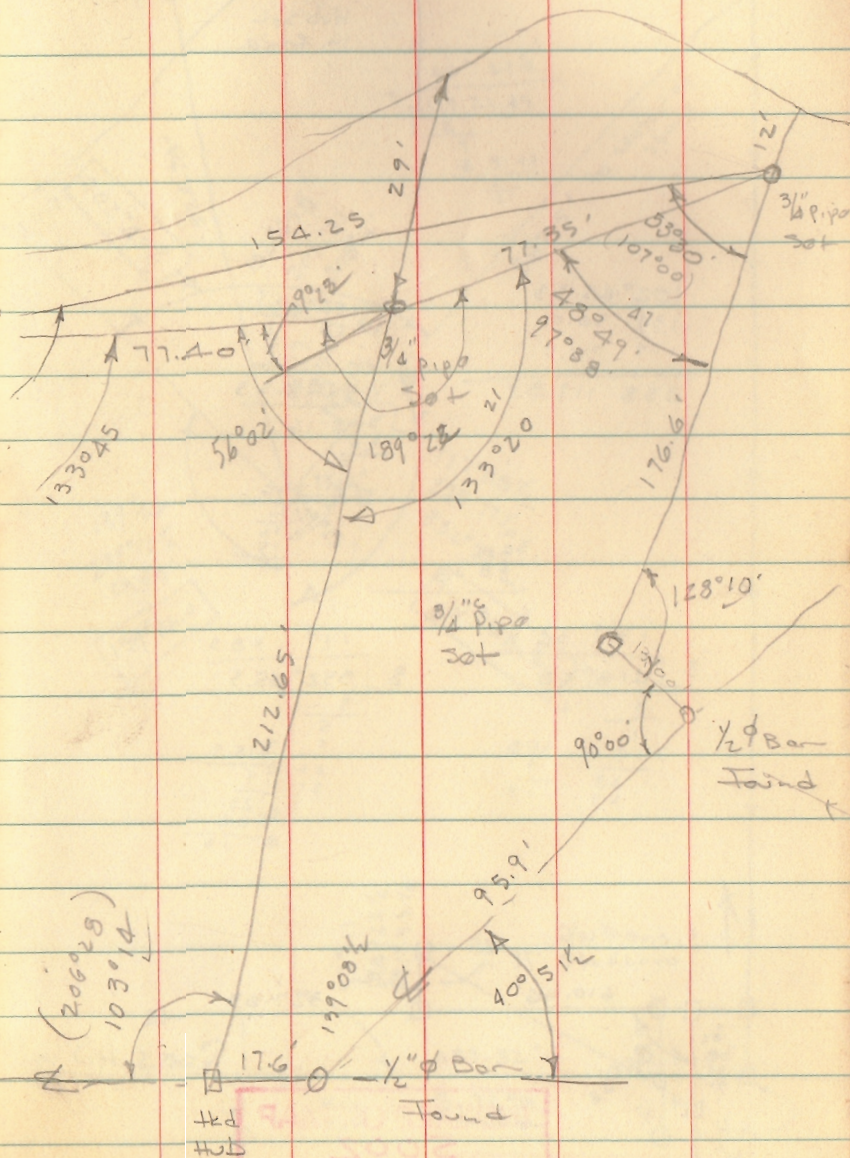
133°20'
48 49
241 50
90 00
139 09
10 46
-174



Dadso  
Vern Hosselman

10-11-64

45



INDEXED ON MAP

22 43







HOSSELMAN SURVEY  
WOLF ISLAND

OFFSET TO SHORE LINE FROM "A-B"

DIST OFFSET

A +

9.4 17'-67'-81'

20.0 30'

72.0 119'

94.0 83'

217.55 "B" 4'

See BK 6 pg's 45 & 56

INDEXED ON MAP

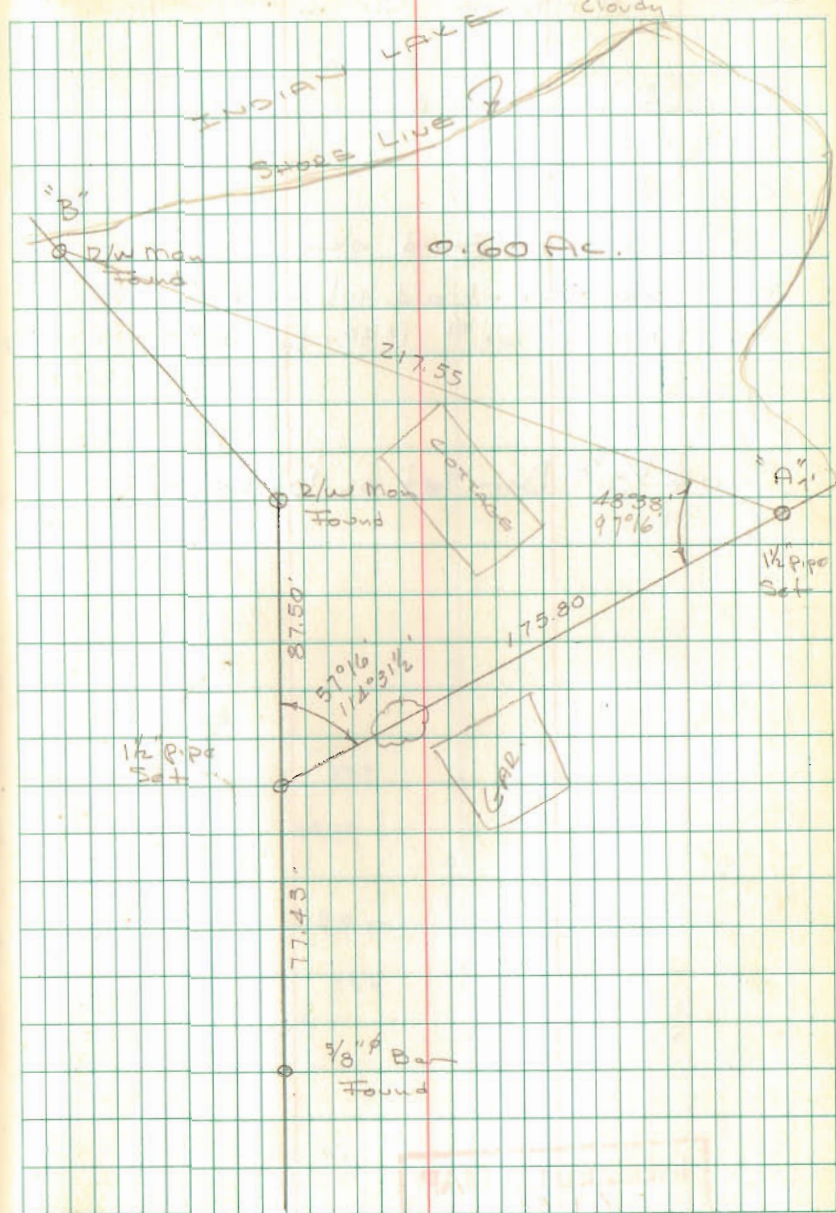
2243

Dodson  
Nichols

4/18/68

60°  
Cloudy

40



Survey of tract of land  
on Wolf Island Lemmon  
Reservoir for A. R. Parr

10-3-23

A. C. Tarr

C. H. L.

Harry Tarr

Tract is in extreme N end of  
island but unable to tie to  
any section line

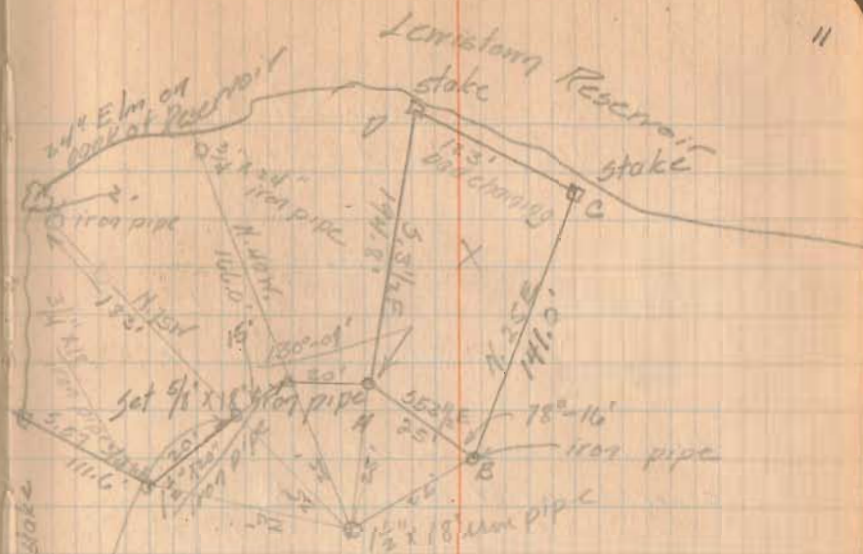
Witnessed to pipe at A.

30" Elm N. 41° W 57'

24" " N. 60° W 78.0'

10" peg nut lynchery S. 7 1/4° W 47.0'

D— poor survey. Best I  
can do. Not a cussed thing to  
tie to!!!



INDEXED ON MAP

2243

47-10  
34-55  
782-85  
41-02  
73-35  
32-32  
41-42  
8-59

73-85

113-35

40  
73-35

