

Huffman survey  
Stokes Twp.

N.W. Qr. sec. 5-7 S. R. 8 E.

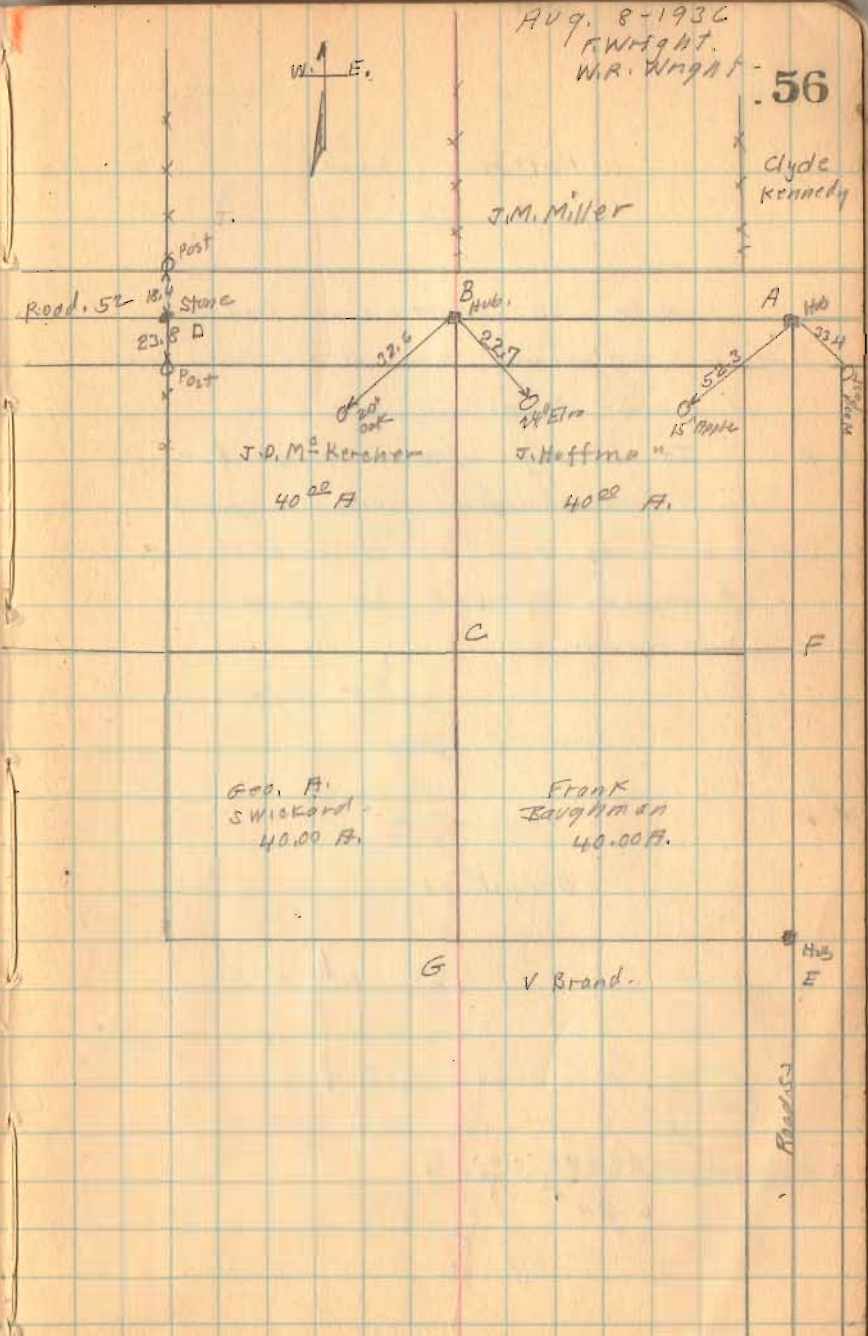
For Road. 52 & 53 see Book. 518 Page 60

To establish line BC for fence.

1755

INDEXED ON MAP

Aug. 8-1936  
R. Wright.  
W.R. Wright - 56

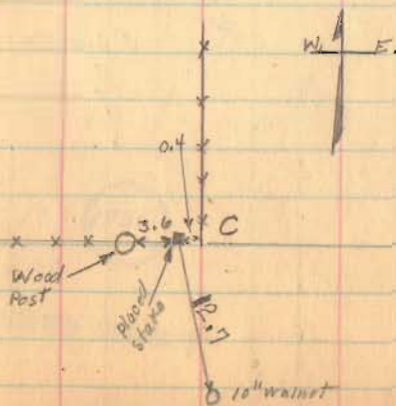


Huffman Survey

Note 20' offset line produced from B to C strikes approx at G south end of Present fence.

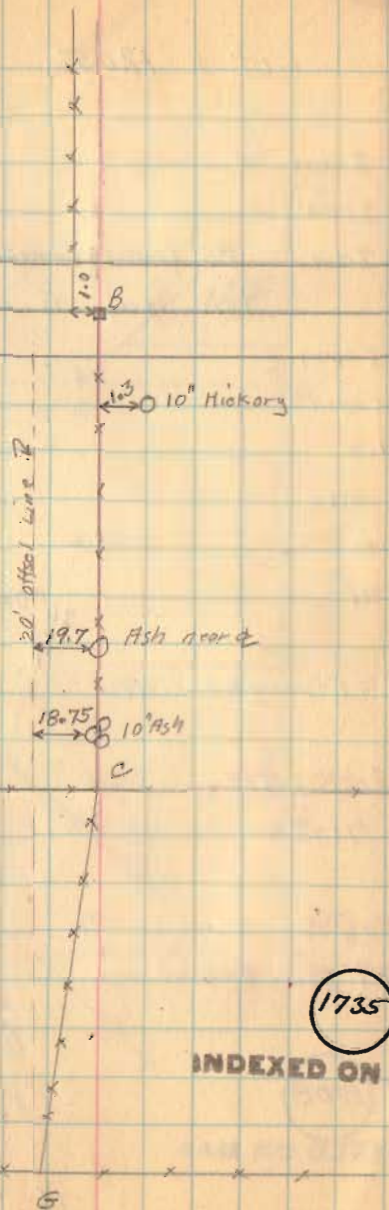
It is my opinion the four 40 A tracks were never properly divided as shown by large angle at C. I therefore followed old fence line as shown.

Detail at C.



8-8-36

57



1735

INDEXED ON MAP