

Road. 248  
 Stokes Twp.  
 Turkey Foot Road

1723

INDEXED ON MAP

July - 1 - 1936  
 8001  
 F. Wright  
 S.W. 1/4  
 J. Montgomerie  
 W. Wren

14.8 10.0  
 9+00

14.7 15.6  
 9+00

15.0 15.6  
 5+00

15.0 15.9  
 3+00

14.7 16.0  
 1+00

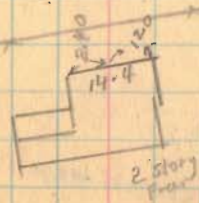
Roy M. Marine

Sta. 0+00  
 Placed. Iron  
 273 + 62.75

Joseph Fish

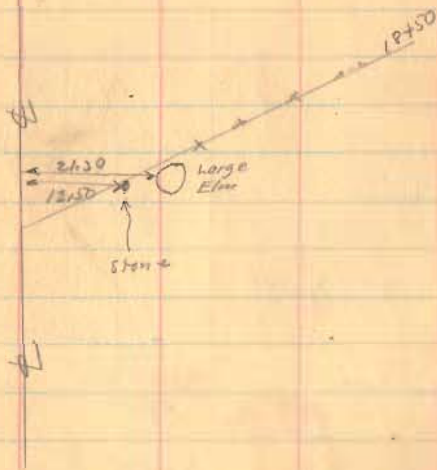
W. Post  
 59+100  
 100'  
 30'  
 30'

S.H. 232  
 Route 69



Roy M. Marine

Road 249

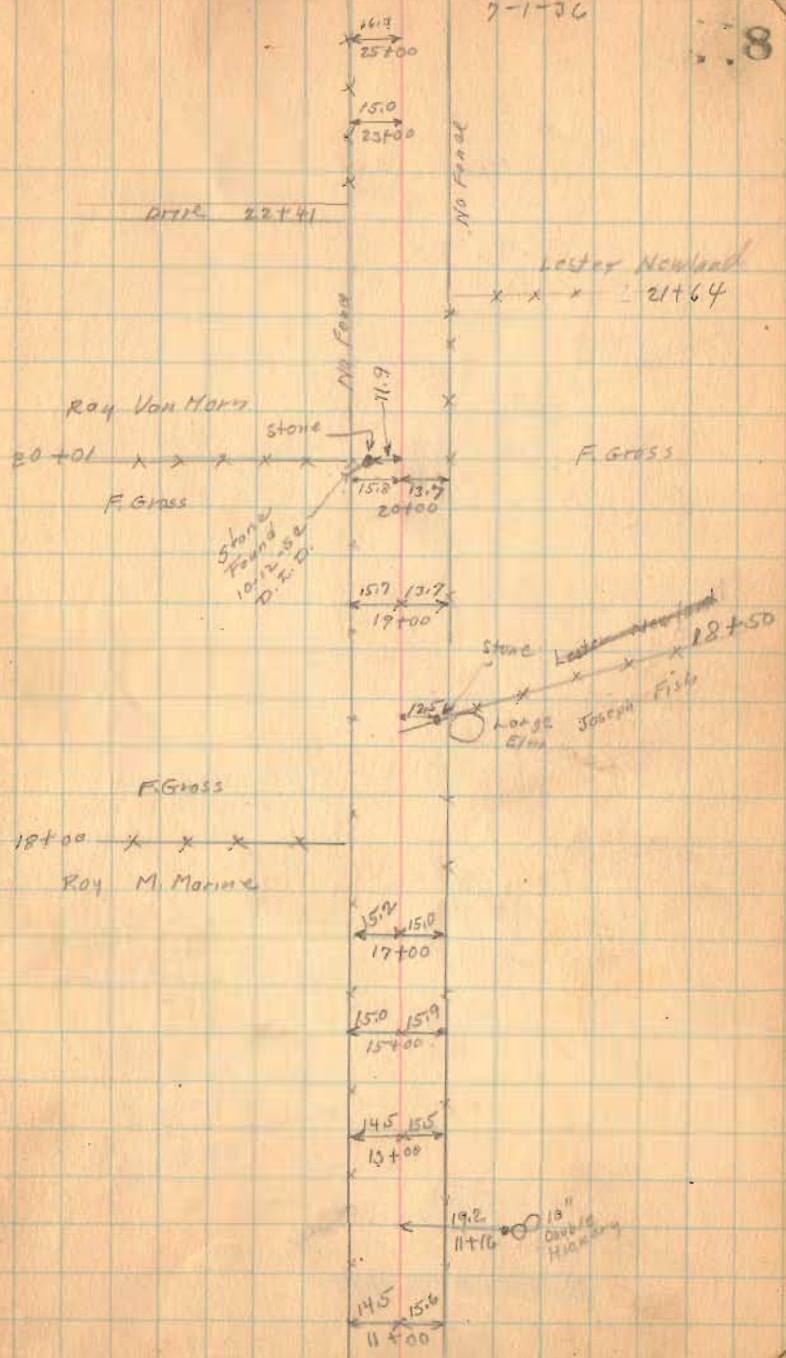


1723

INDEXED ON MAP

7-1-26

8





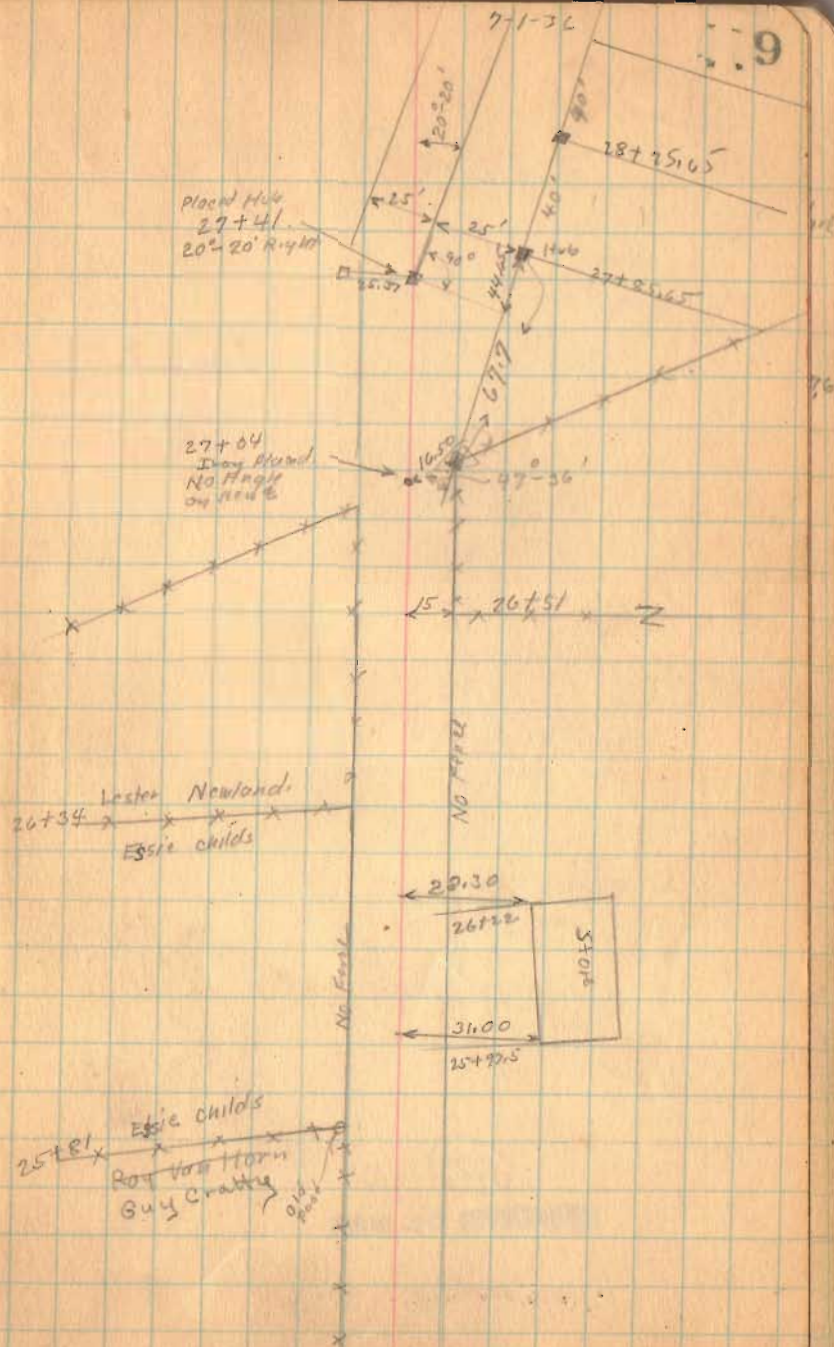
Road. 248

22.9

32+85.65

1723

IMAGED ON MAP







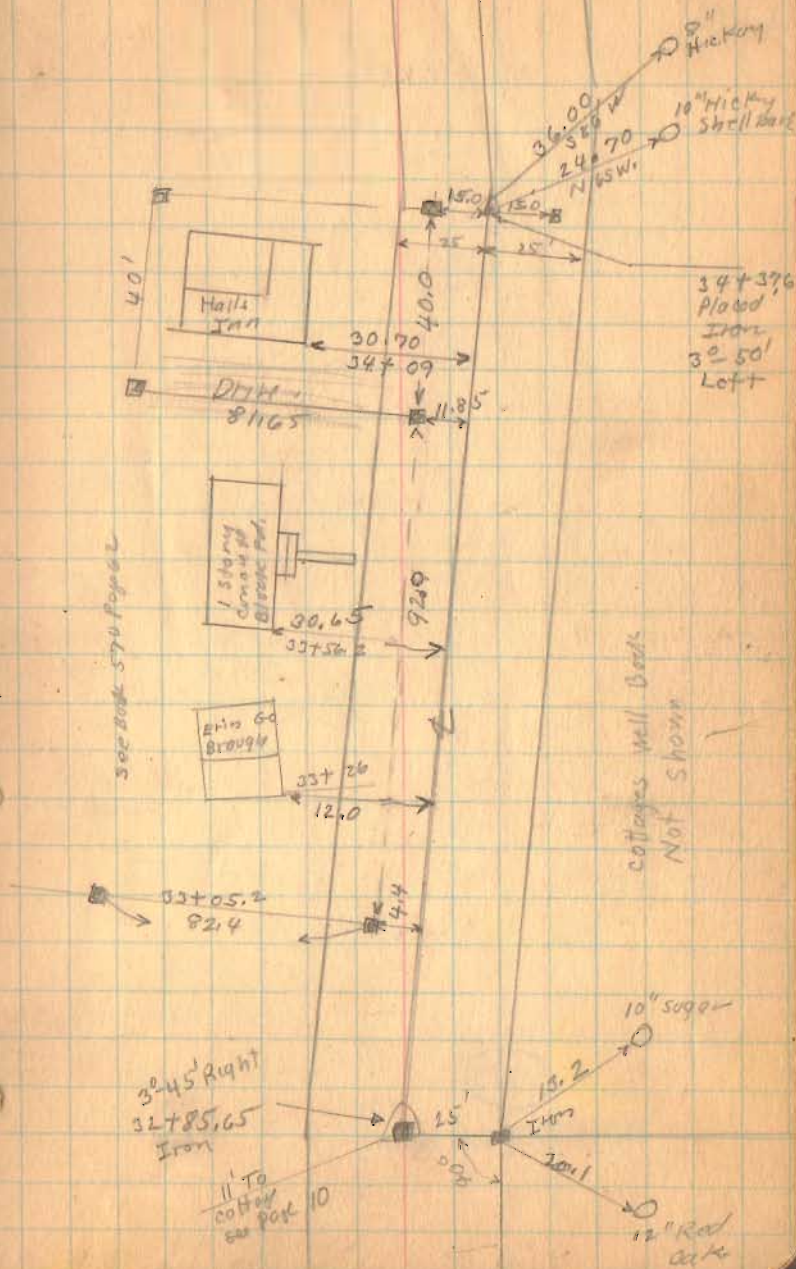
Road. 248

1723

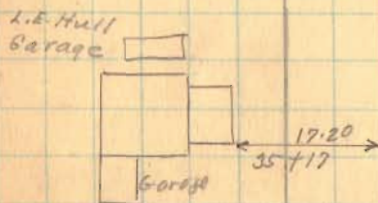
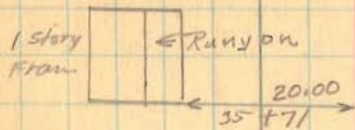
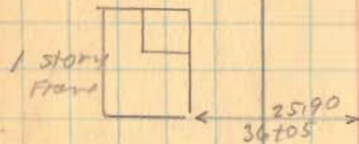
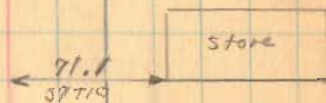
INDEXED ON MAP

7-1-36

.11



Road 248

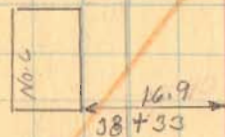
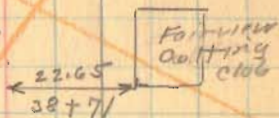
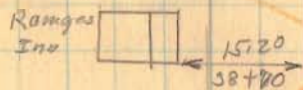
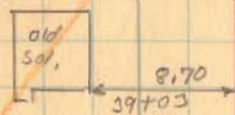
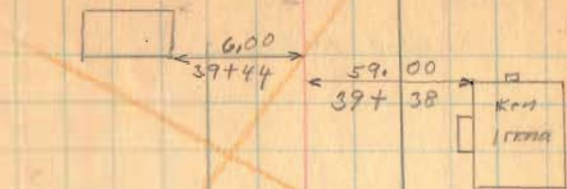


1723

INDEXED ON MAP



See New &amp; Page 17



20" oak

Hood Iron

38+00

6° 33' Left

9° 12' Left

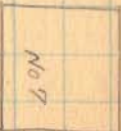
36.2

51.85

23.25

19.20

19.05



52.3

20" Maple

1723

CHECKED ON MAP

Road-248

1723

INDEXED ON MAP

See New Page 18

July 2-1936

Nice day

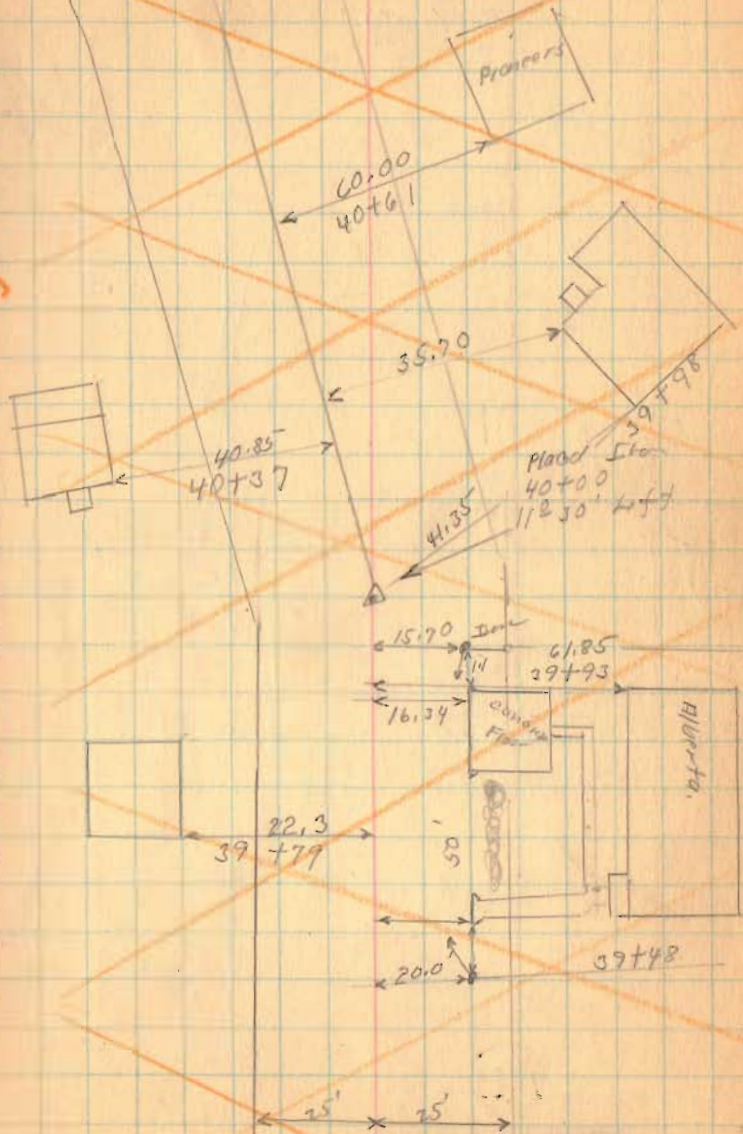
F. Wright

G. Wilge

J. Mouton

W. W. W.

14





Road 248



NO change sta. 41+15  
TO 43+85

1723

REFLECTED ON MAP

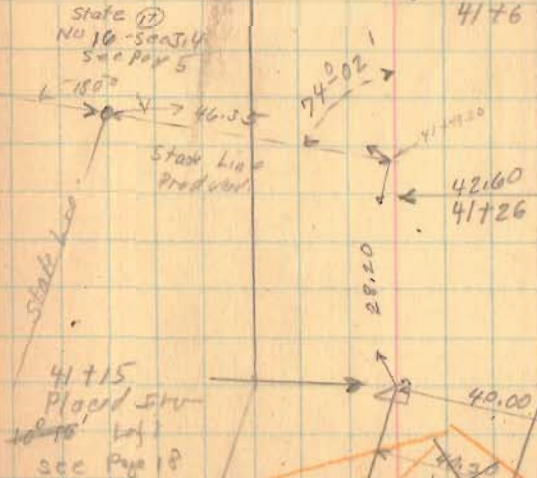
7-2-36

.15

SEC BOOK 570  
Page 80

42+55  
9<sup>0</sup> 55 Right

State 17  
No 16 - Sec 14  
Sec Pgs 5



Alvada

Teddy  
Rd 4

Bermly

see Page 18

Road 248

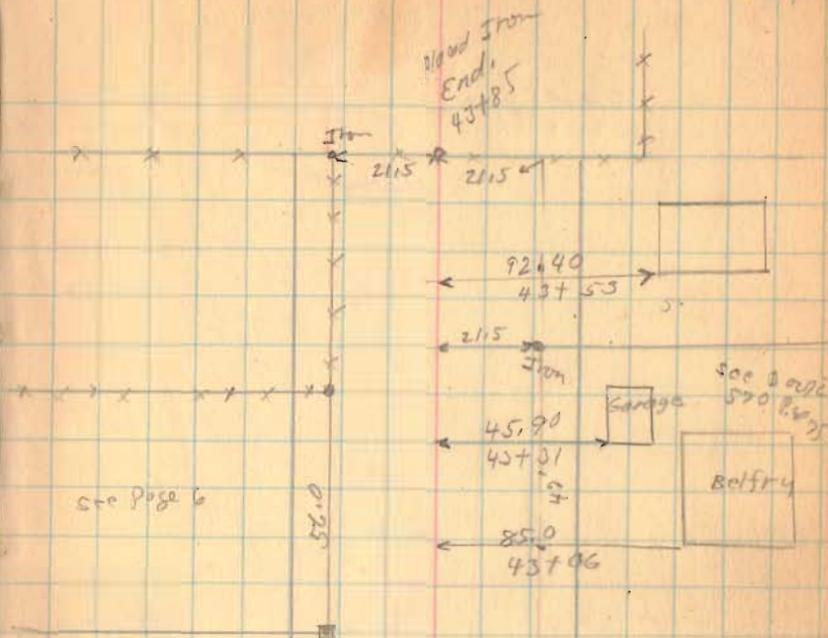
Length 4385 Feet,

1723

INDEXED ON MAP

7-2-36

.16





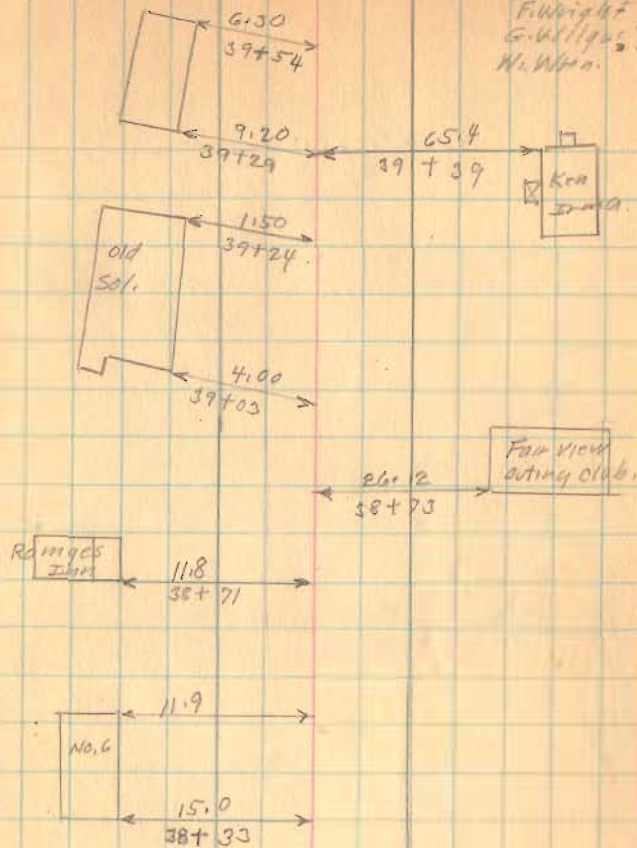
Road. 248

New  $\pm$   
Sta. 38+00  
To 41+15

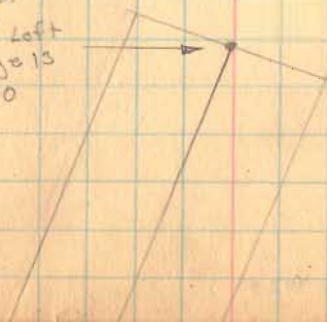
1923

INDEXED ON MAP

Aug. 3-1936  
F. Wright  
G. Williams  
Hi. W. W. 17



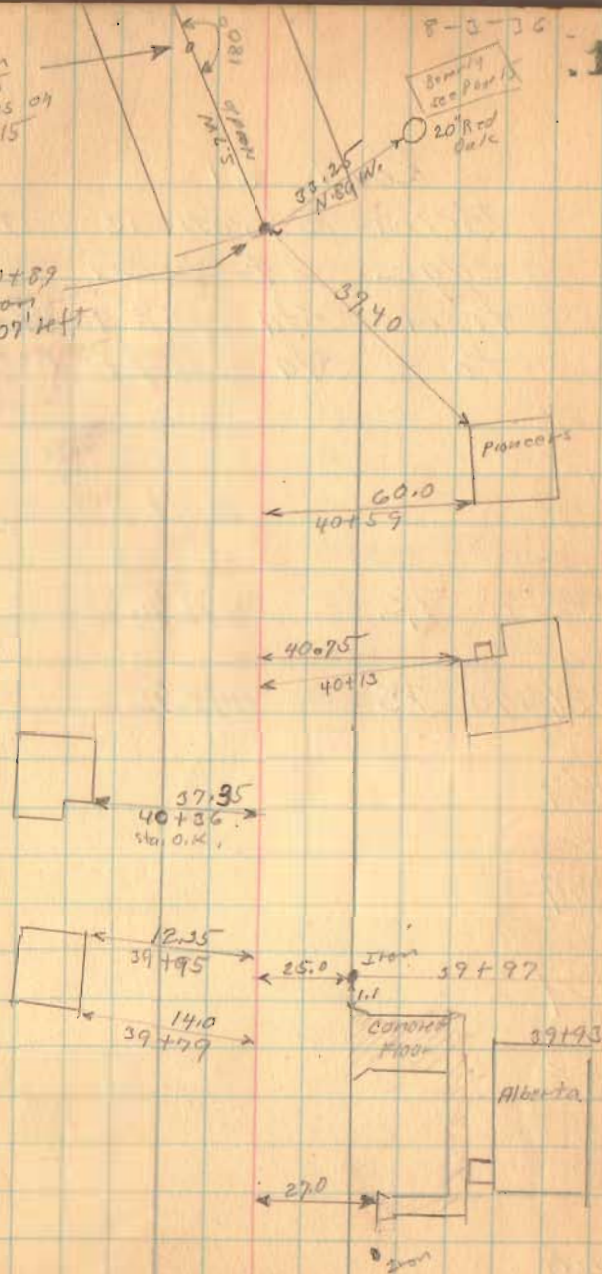
Iron  
9'-12" Left  
See Page 13  
38+00



Road 248

Iron  
41+15  
Same as on  
page 15

40+89  
Iron  
19°-07' left



.18

1923

INDEXED ON MAP