

FB 518

Road 53

Bloomfield and Stokes Twp.

40' - Hall and Whitney Pike

Free Turn Pike Record No. 4 Page 349

Sept - 1876

Stakes 20' from \pm on West for Fence.

104+00 20' E

98+00 20' E

92+00 20' E

86+00 20' E

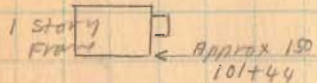
81+00 20' E

For River Posts.

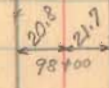
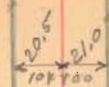
1713
INDEXED ON MAP

54

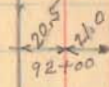
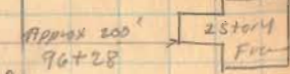
May - 15 - 1936
Clear - cool
F. Wright
E. Core.



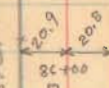
Sept. 10 - 1936
Clear - Warm
F. Wright
W. Wilson
G. Wilson
Max James
Joe Roberts



Re staked to set
R/W. Posts



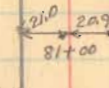
(New steel posts No. 1111)



V. Branch

Geo. M. Wright

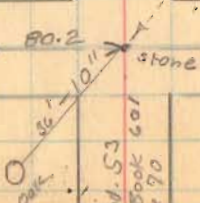
Sta. 79+52 (F.B. 601 R. 70)
Dec. 4-5-25



R/W. Posts
102+00
See Page 16

S.H. 579
Route 274

R. F. Briggs



E. Barlow

Road 53
See Book 601
Page 70

FB 518

Road 53

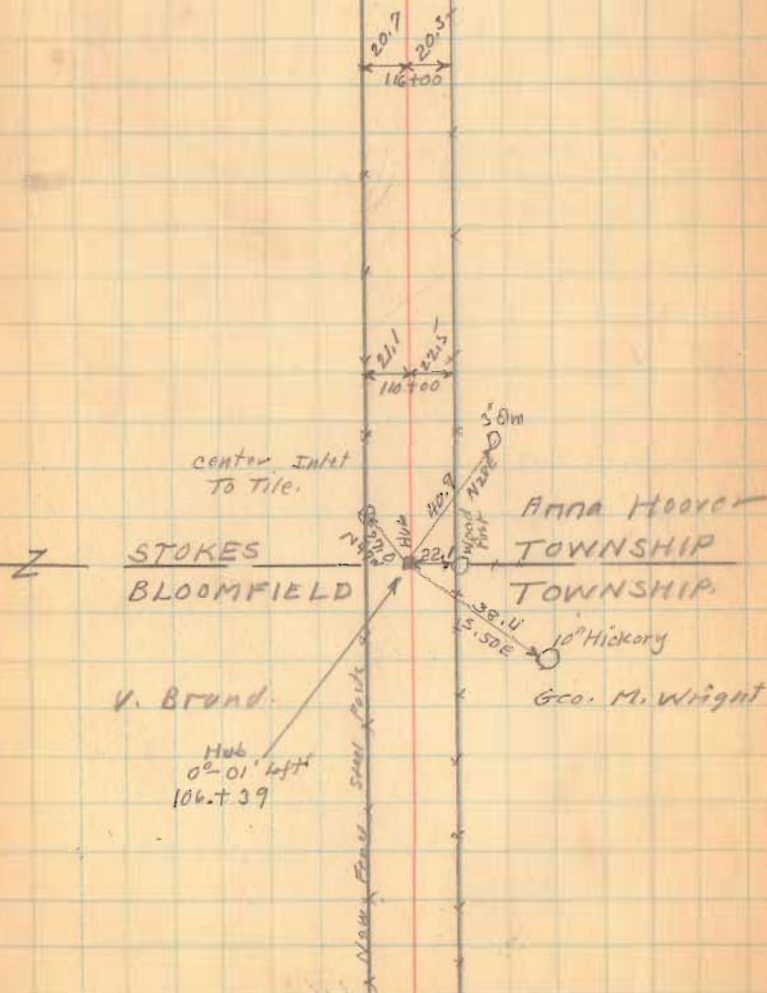
May-16-1936
Clear
F. Wright
E. Cox
9-10-36

55

116700 20' ±

110700 20' ±

1713
INDEXED ON MAP



FB 518

Rood. 53

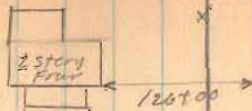
123700 20' E

1713

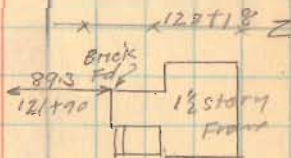
INDEXED ON MAP

5-16-36

36



± Lane 125'59



121'12 Z

The N.W. Ins. Co.

119'66

Anna Hoover

FB 518

Road. 53

135+00 20' ±

129+00 20' ±

INDEXED ON MAP
1713

57

5-16-36

137+28
Z

75.95
136+93

1/2 story
Frame
CONCRETE
BLK. FD.

136+26
Z

197
191
135+00

sec. 5

T. 7 R. 8

HUNTER DITCH

1330

2.60

Z 133+08

133+55.4

(No Fence)

New fence post

sec. 8

T. 7 R. 8

20.3
20.4
129+00

FB 518

Road 53

178+00 20' ±

172+00 20' ±

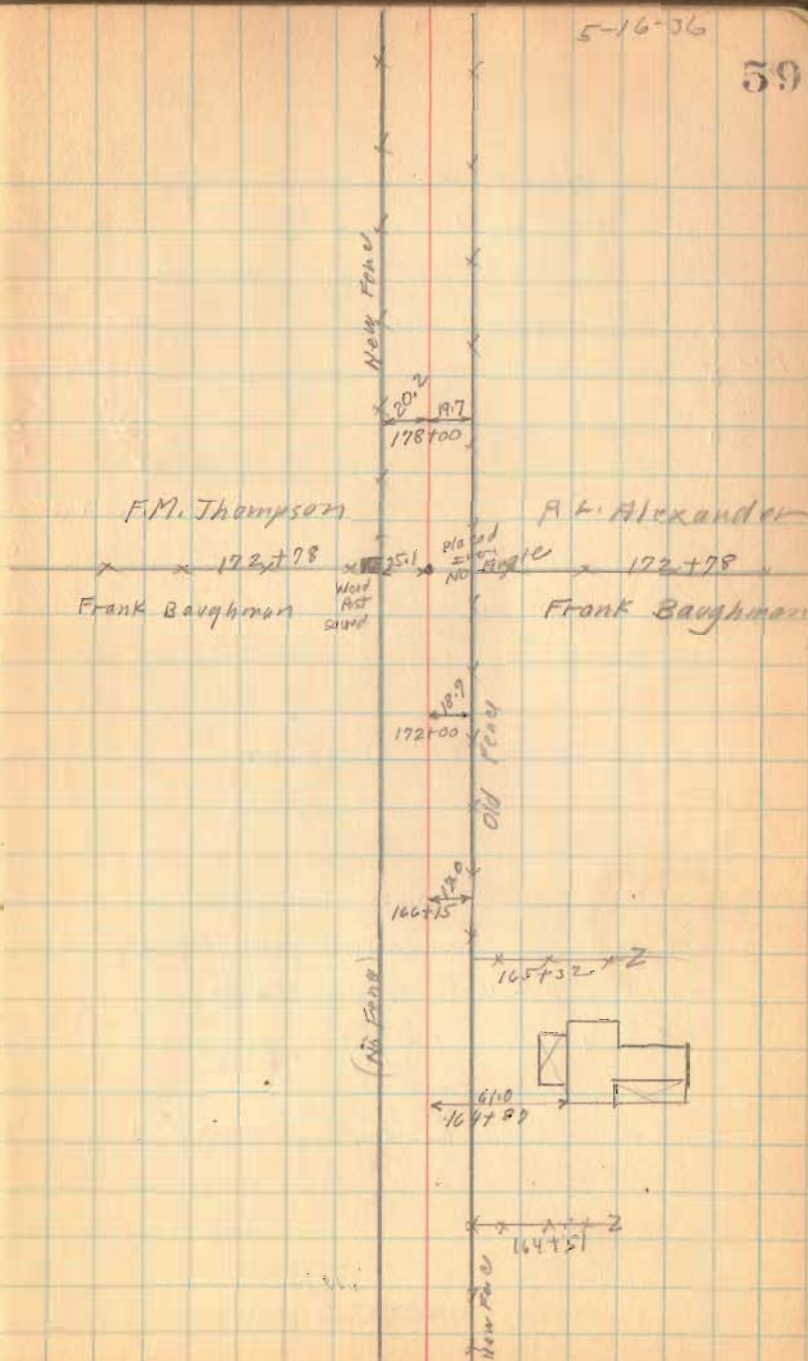
166+15 20' ±

(173)

INDEXED ON MAP

5-16-36

59



FB 601

Road 53

43+00 25' d

26+56.5

13

39+56.5

35+00 25' d

33+00 25' d

29+00 25' d

26+00 25' d

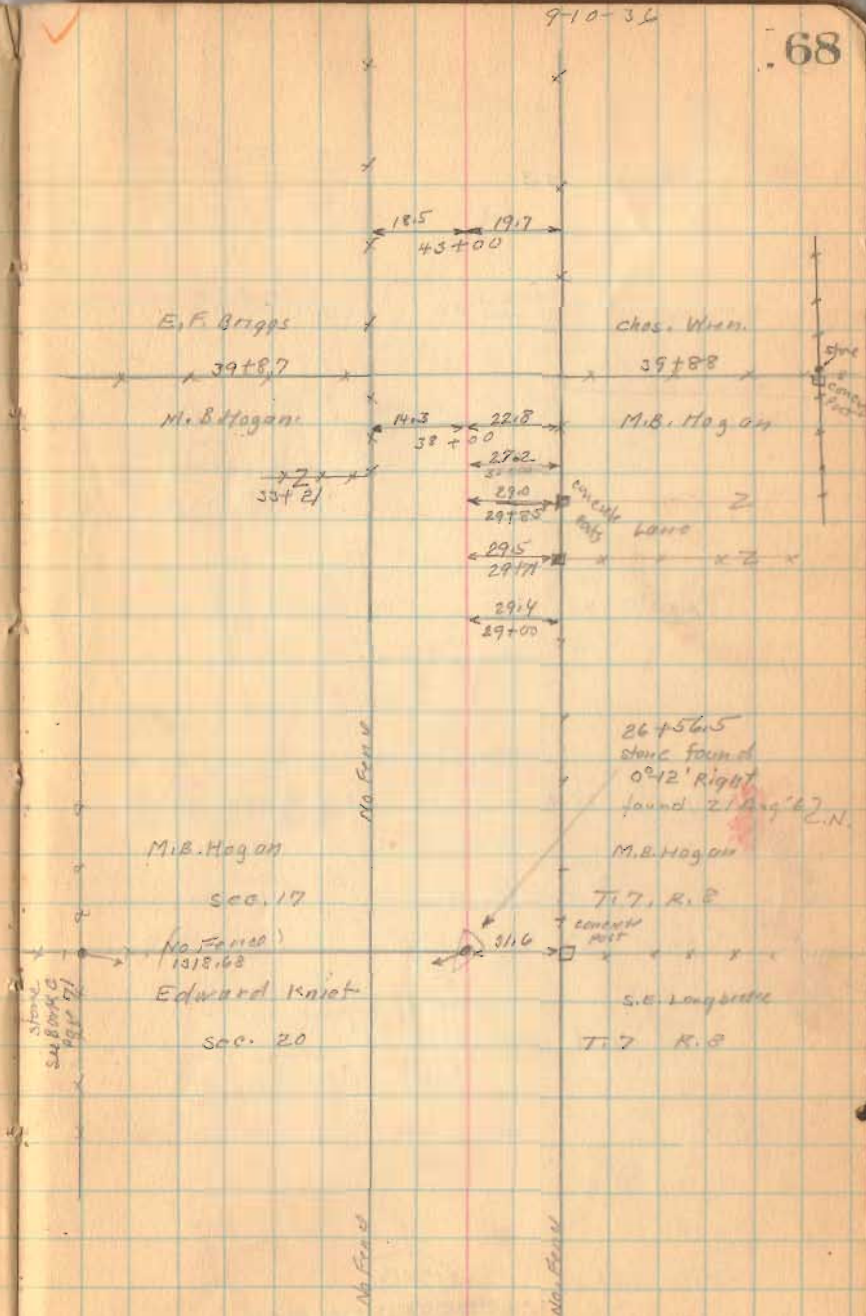
20+00 25' d

1713

INDEXED ON MAP

9-10-36

68



FB 601

Road. 53

72+00 25' E

67+00 25' E

63+00 25' E

58+00 25' E

52+50 25' E

48+00 25' E

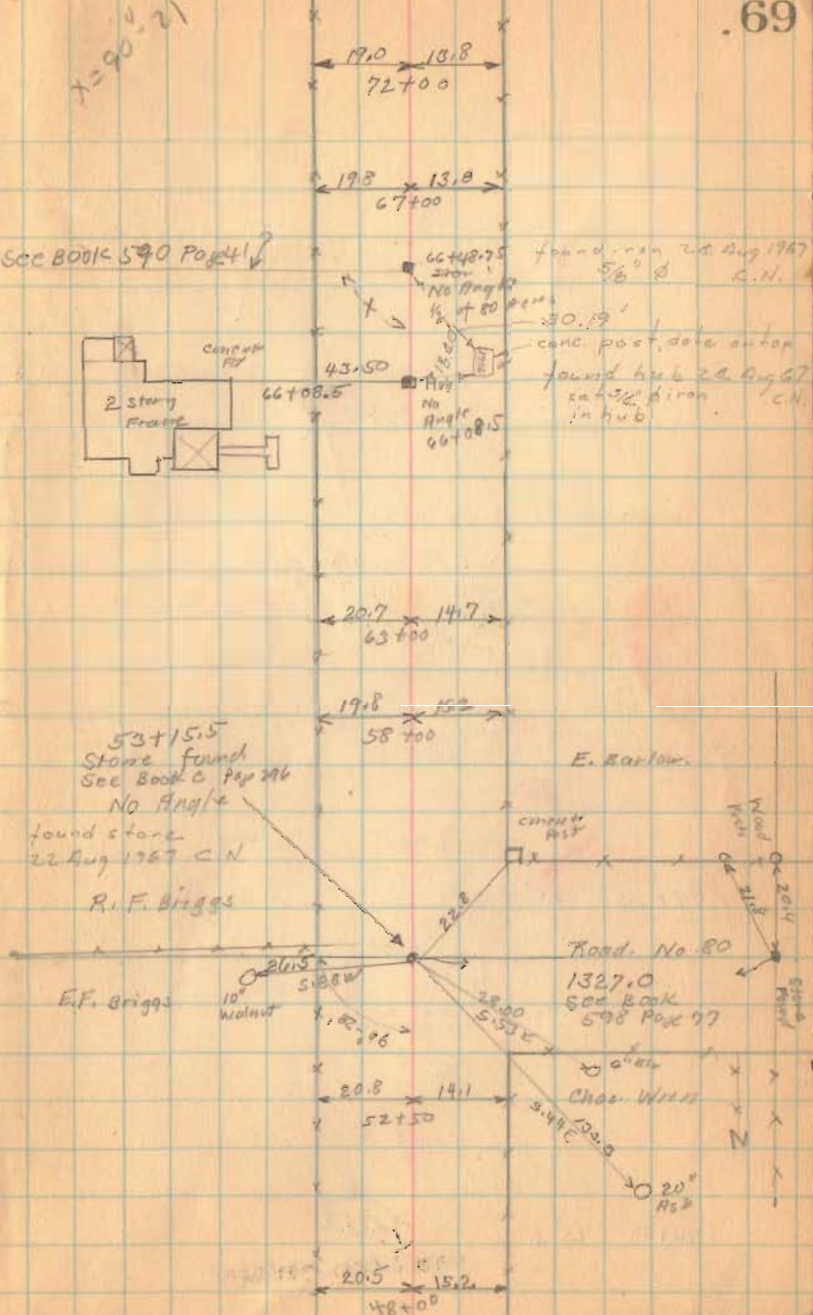
(173)
INDEXED ON MAP

9-10-36

69

$\angle = 90^\circ 21'$

See BOOK 590 Page 41



FB 601

Road. 53

79+25 25' ±

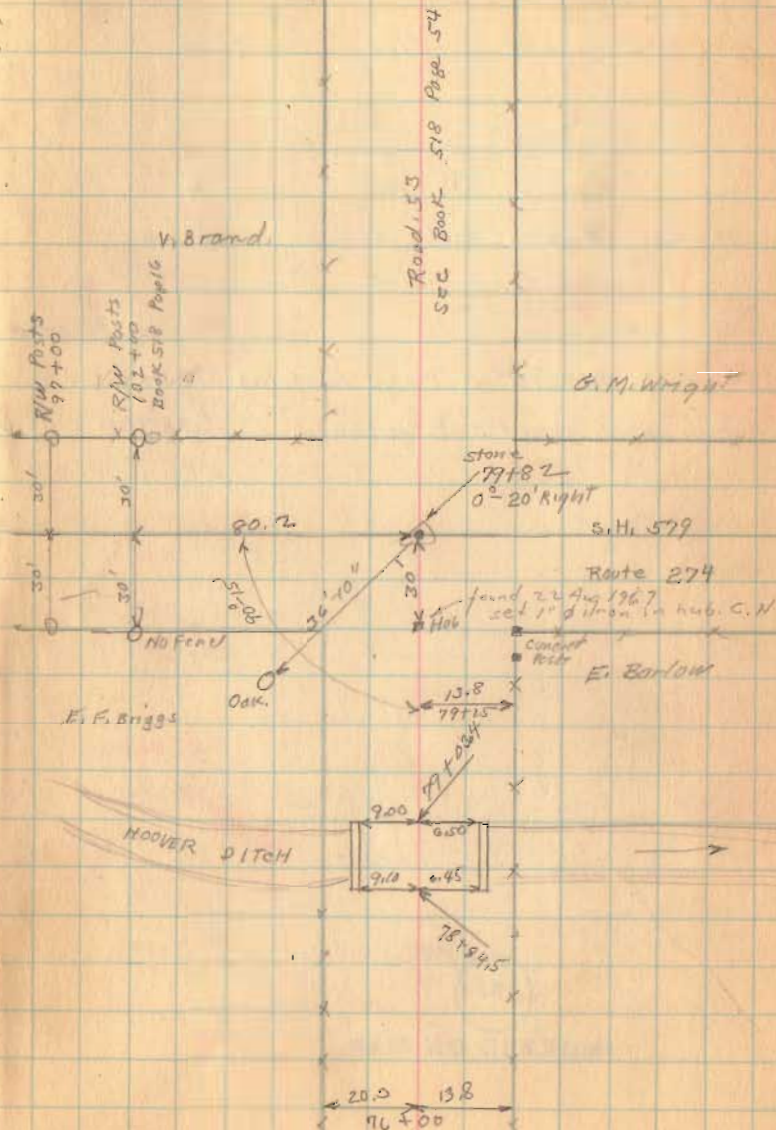
76+00 25' ±

1713

INDEXED ON MAP

9-10-36

70



C.A. Maskeep
 J.H. Maskeep
 Waldo Hudson
 Rocky Cockerell

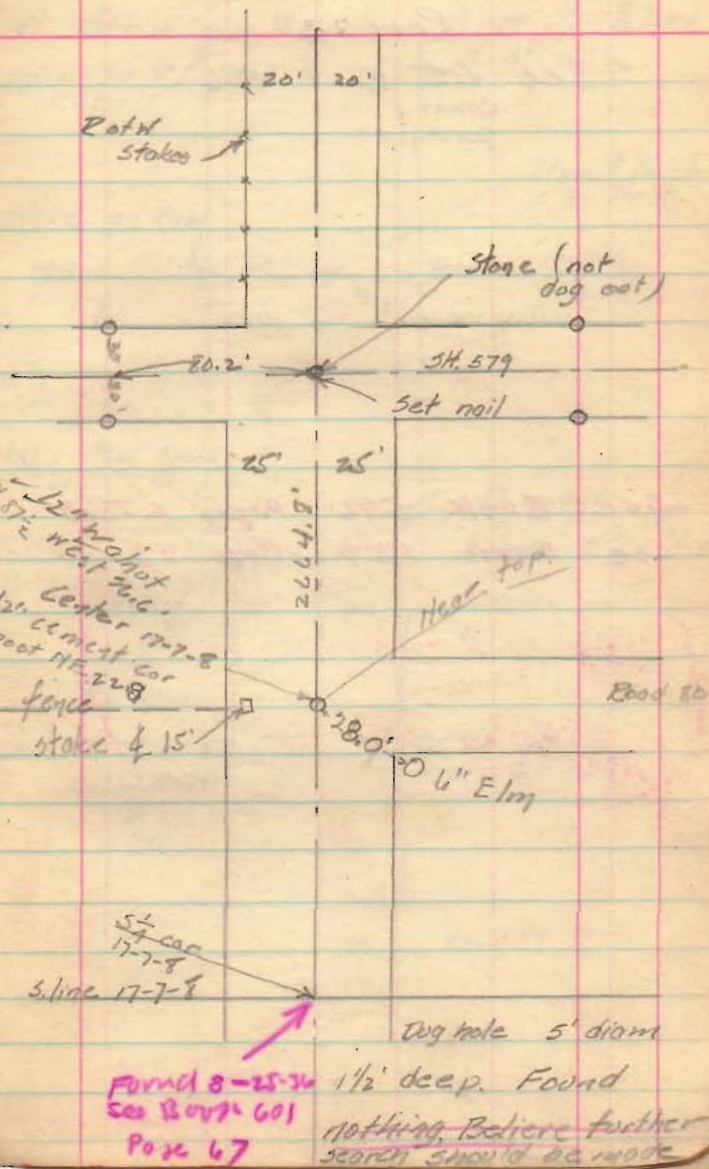
July 10, 1936

Road 53 N. of S.H. 579
 State Route 274

Found R. of W. stakes on W.
 side of Road 53 on Rat
 way line 20' N. of $\frac{1}{2}$
 N. about 1 mi.

See ~~Book~~ Book 579
 country
 engineers

(see BOOK 601
 Pages 67 TO



FB 711

Resurvey C.R. 53
Bloomfield & Stokes Twp.
Lagan Co., Ohio

106+39.50 - P.I. - 5/8" ϕ cpd. rebar
in monument box Fd.
0°-00'-18" Rt.

105+00 - P.O.T. - R.R. Spike Set

100+00 - P.O.T. - R.R. Spike Set

95+00 - P.O.T. - R.R. Spike Set

93+94.76 - P.O.T. - Mag Nail Set

90+00 - P.O.T. - R.R. Spike Set

85+00 - P.O.T. - R.R. Spike Set

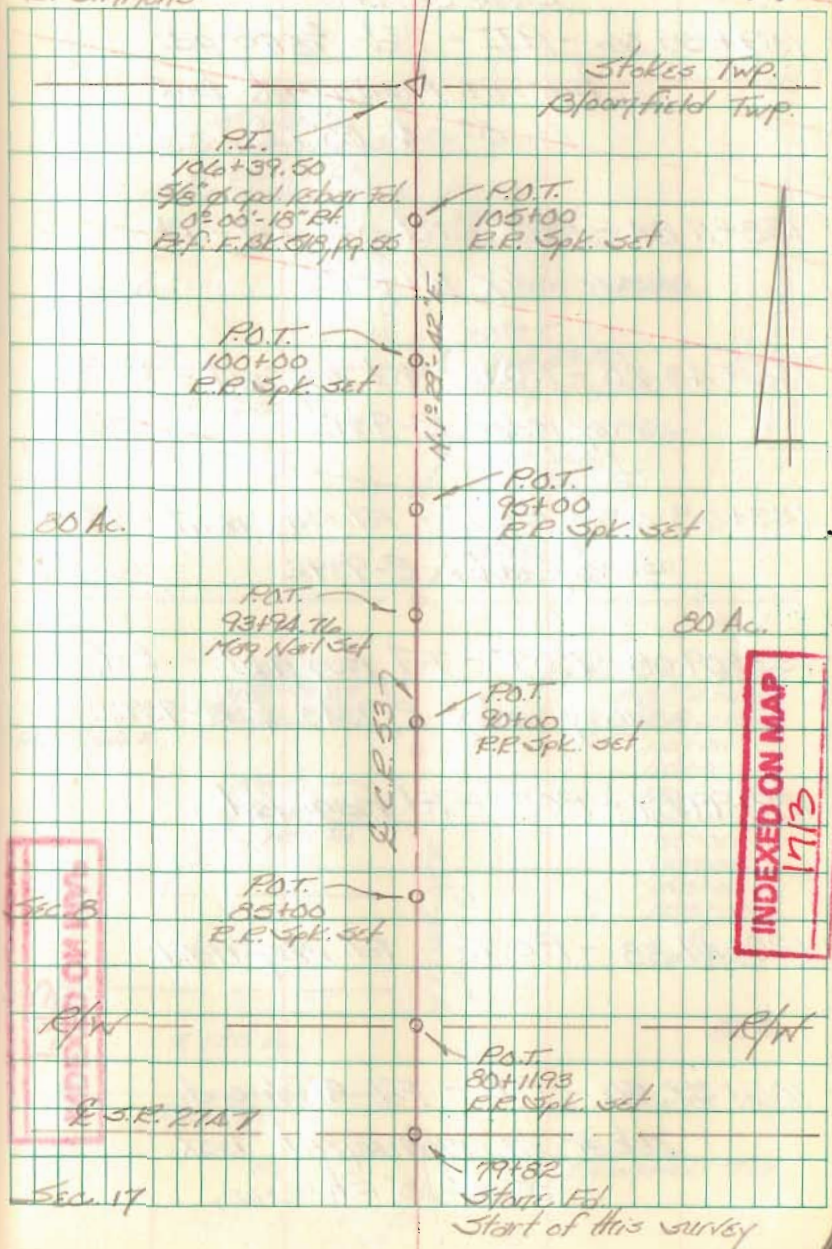
80+11.93 - P.O.T. - R.R. spike set - Intersection
N. R/W line S.R. 27A w/ E C.R. 53

79+82 - Stone Fd - Intersection E
C.R. 53 w/ E S.R. 27A - Set R.R.
Spike over stone to surface w/
Mag nail straddles - Start of
this survey - Ref: F.B.K. # 518, pg. 5A

C. Nichols
C. Dill
B. Simmons

May 2003

72



FB 711

Resurvey C.R. 53
Bloomfield & Stokes Twp.
Logan Co. Ohio

159+55.06 - P.I. - Fd. $\frac{5}{8}$ " ϕ cpd.
rebar in monument box.
 $0^{\circ}04'00"$ Lt.

138+11.84 - P.O.T. - Fd. mag nail - Ref:
survey index R-9392

136+43.20 - P.O.T. - Fd. mag nail - Ref:
survey index R-9392

133+48.63 - P.O.T. - Fd. mag nail - Ref:
survey index R-9392

133+09.08 - P.O.T. - Fd. mag nail - Ref:
survey index R-9343 & R-9392

129+99.87 - P.O.T. - Fd. mag nail

128+49.88 - P.O.T. - Fd. mag nail

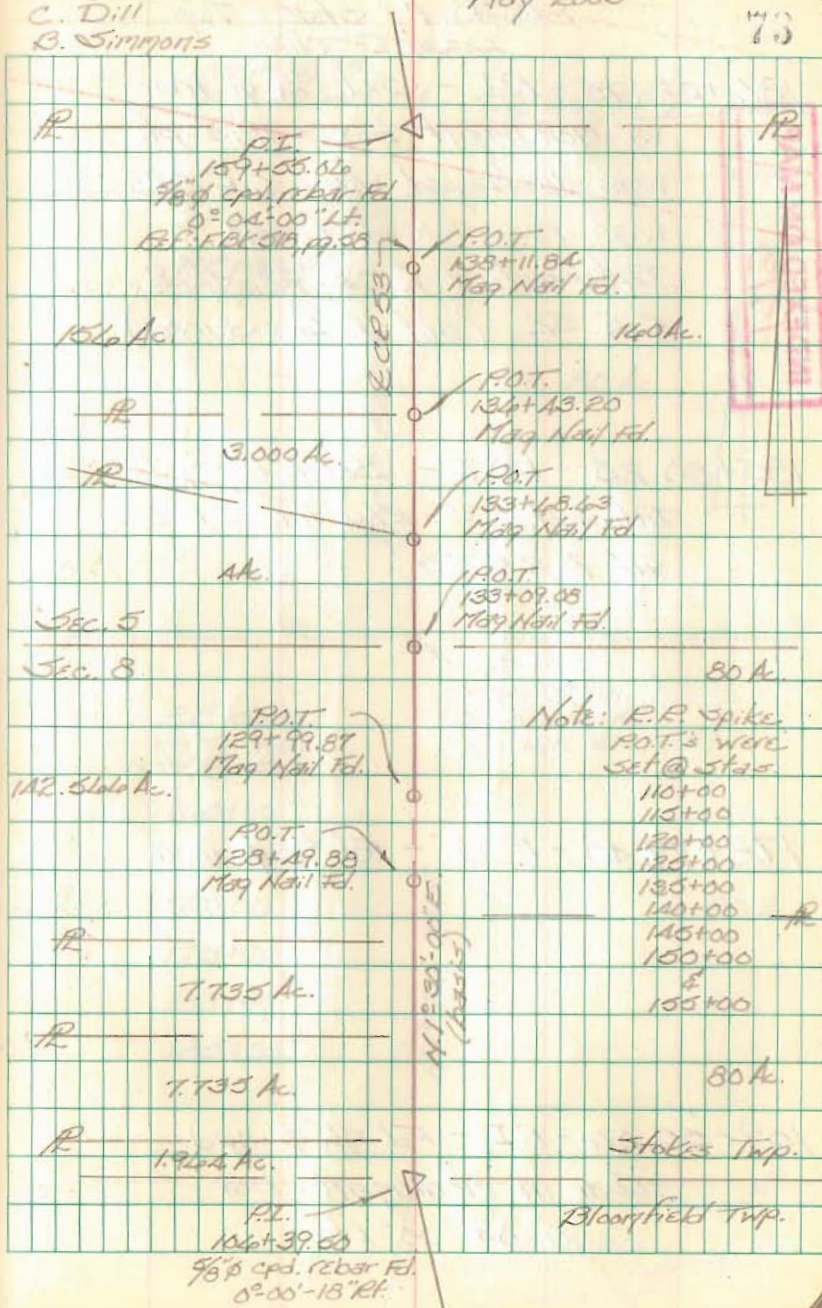
106+39.50 - P.I. - Fd. $\frac{5}{8}$ " ϕ cpd.
rebar in monument box.
 $0^{\circ}00'18"$ Rt.

INDEXED ON MAP
711

C. Nichols
C. Dill
B. Simmons

May 2003

73



FB 711

Resurvey, C.R. 53
Bloomfield & Stokes Twp.
Logan Co., Ohio

186+02.75 - P.I. - Set $\frac{3}{4}$ " ϕ iron
w/ monument box - this pt.
was destroyed when C.R. 52
was resurfaced (2001). -
Intersection of C.R. 53 w/ E
C.R. 52. (end of this survey)

185+80.25 - P.O.T. - Set R.R. spike -
Intersection S. R/W line C.R. 52
w/ E C.R. 53

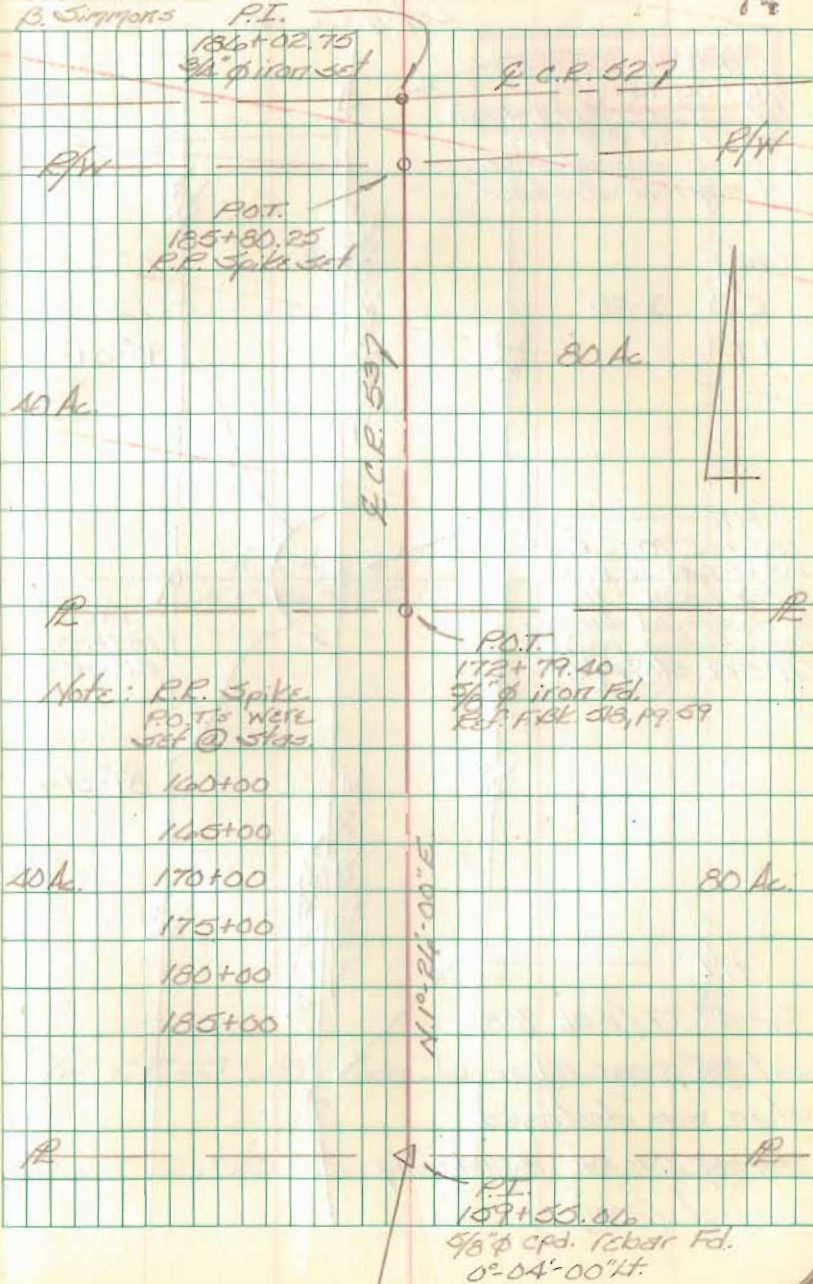
172+79.40 - P.O.T. - Fd. $\frac{5}{8}$ " ϕ iron

159+55.06 - P.I. - Fd. $\frac{5}{8}$ " ϕ cpd.
rebar in monument box.
0°-04'-00" Lt.

C. Nichols
C. Dill
P. Simmons

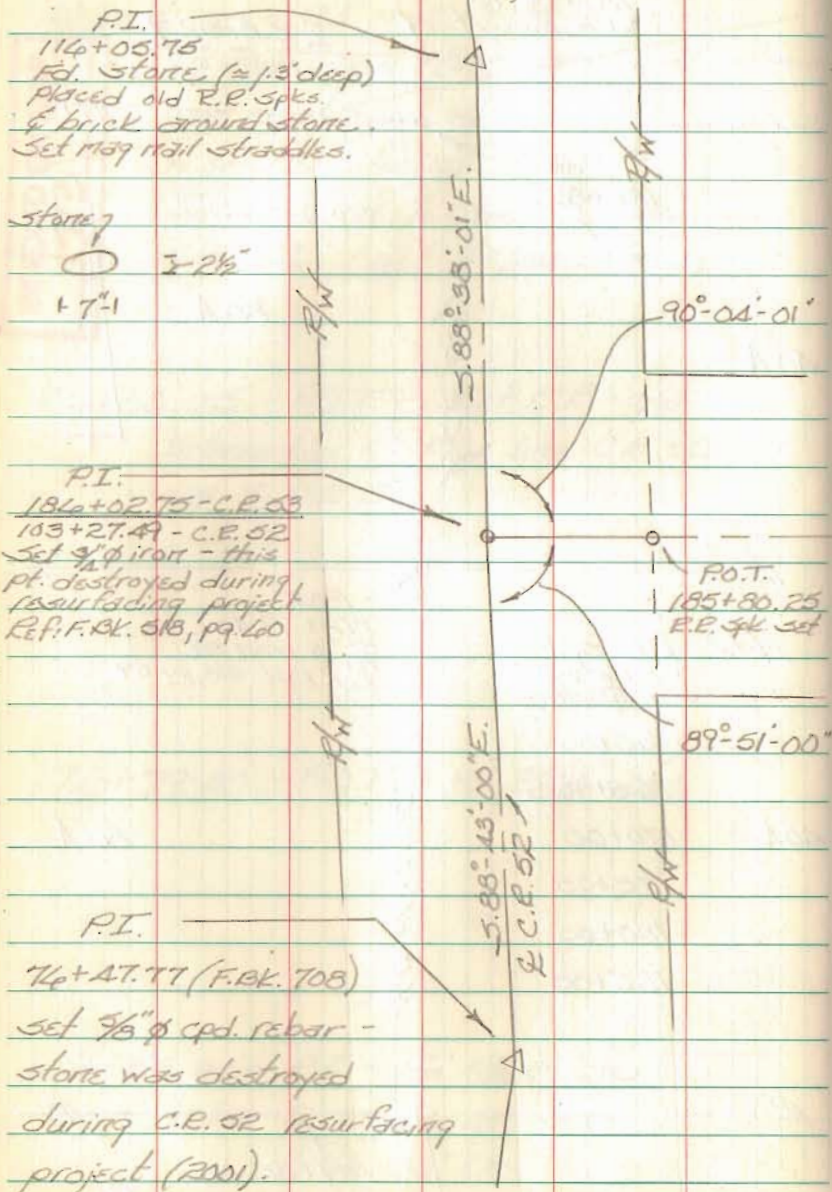
May 2003

74



FB 711

Intersection C.R. 53 w/ C.R. 52
Stokes Twp.
Logan Co., Ohio



C. Nichols
C. Dill
B. Simmons

May 2003

75

INDEXED ON MAP
1713

