

Field Notes: Logan County Surveyor's Books, 417, 502, 570, 600
 Also see plans C4, C5 & C34

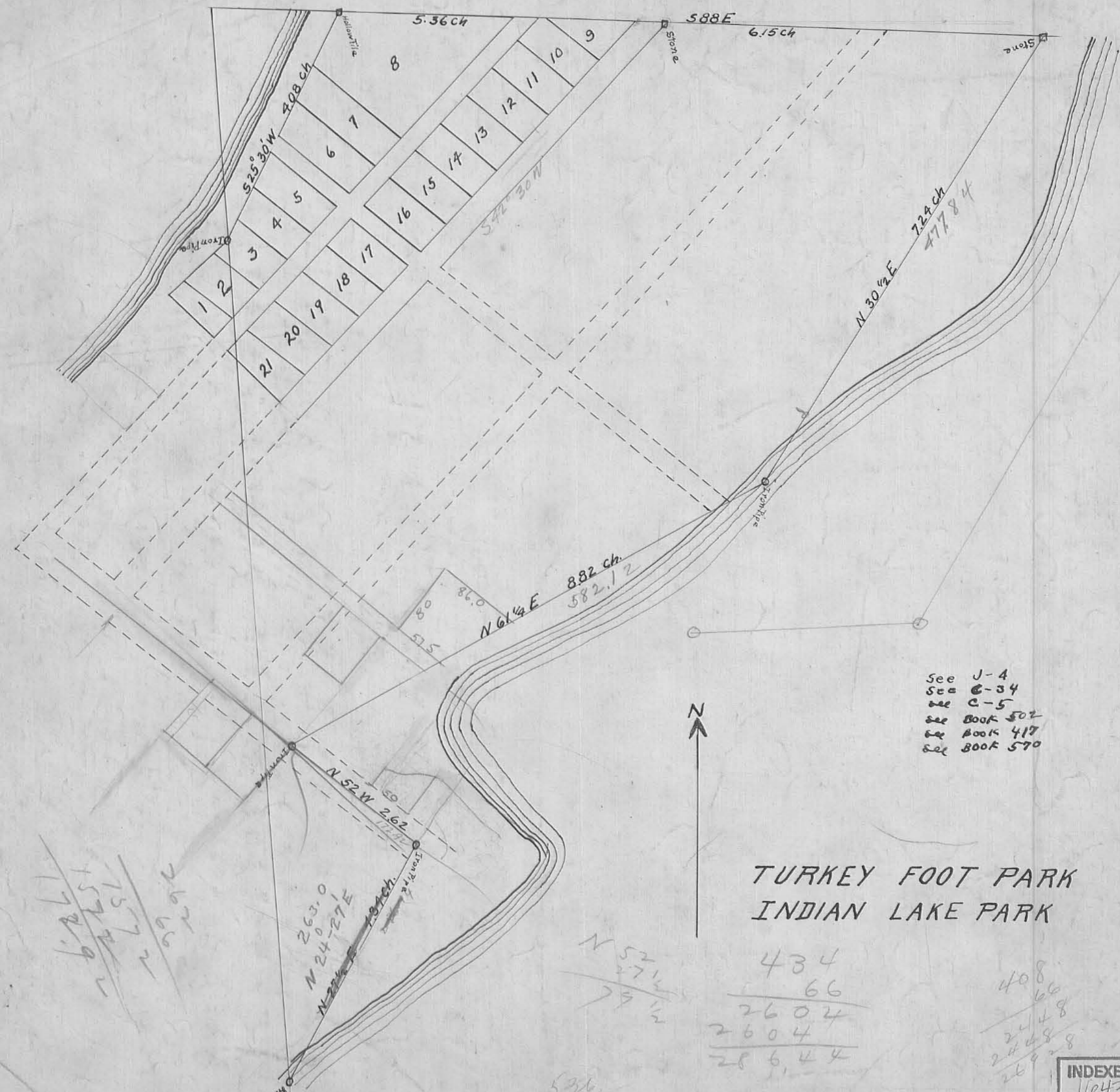
TURKEY FOOT PARK
 INDIAN LAKE STOKES TWP
 LOGAN CO., OHIO

V.M.S. 12276 & 12277
 1935
 Scale: 1" = 60'

1643
 INDEXED ON MAP

6-0

C-4



See J-4
 See C-34
 See C-5
 See Book 502
 See Book 417
 See Book 570

TURKEY FOOT PARK
 INDIAN LAKE PARK

INDEXED ON MAP
 1643

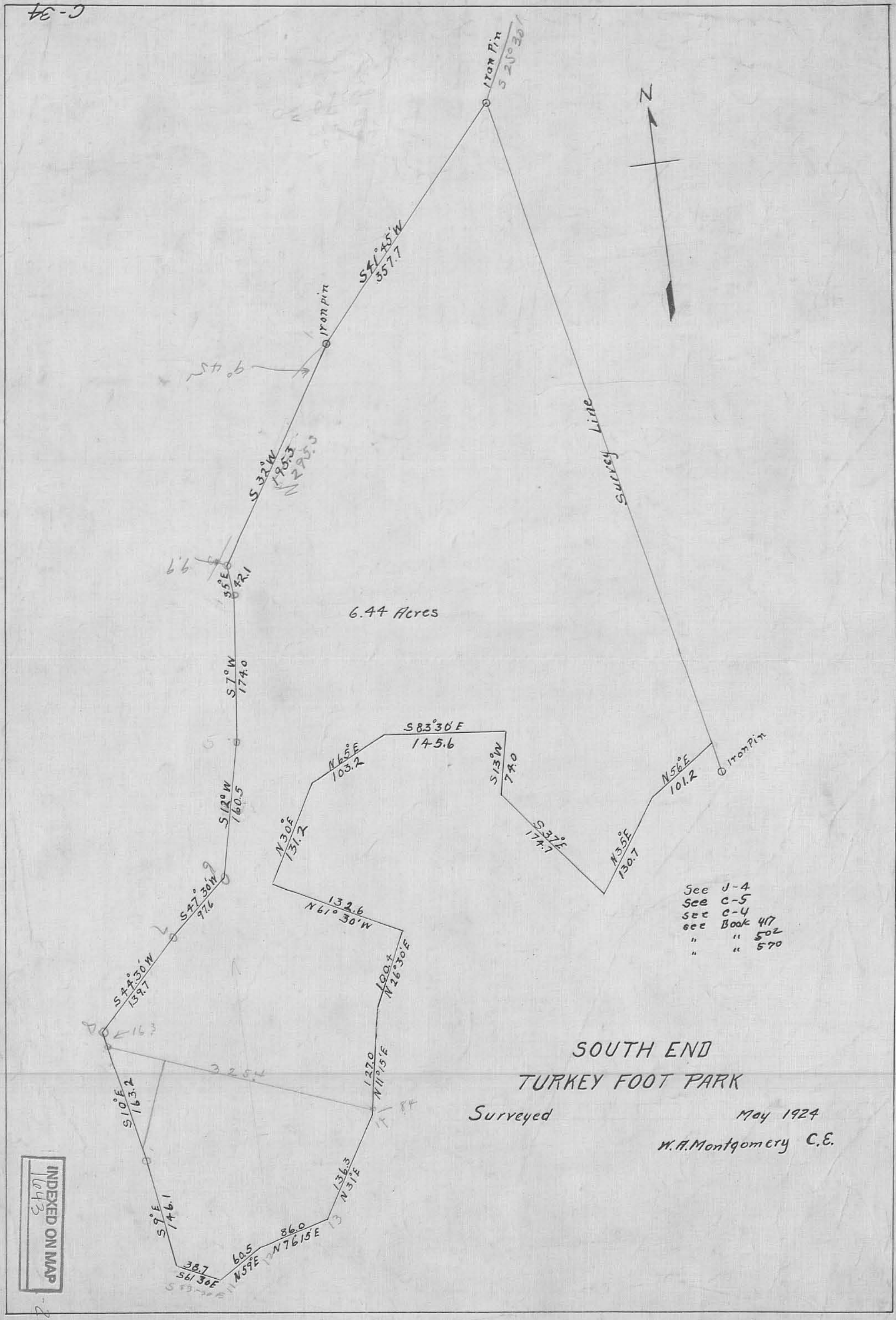
-1P

C-4

C-4

C-34

C-34



SOUTH END
TURKEY FOOT PARK

Surveyed

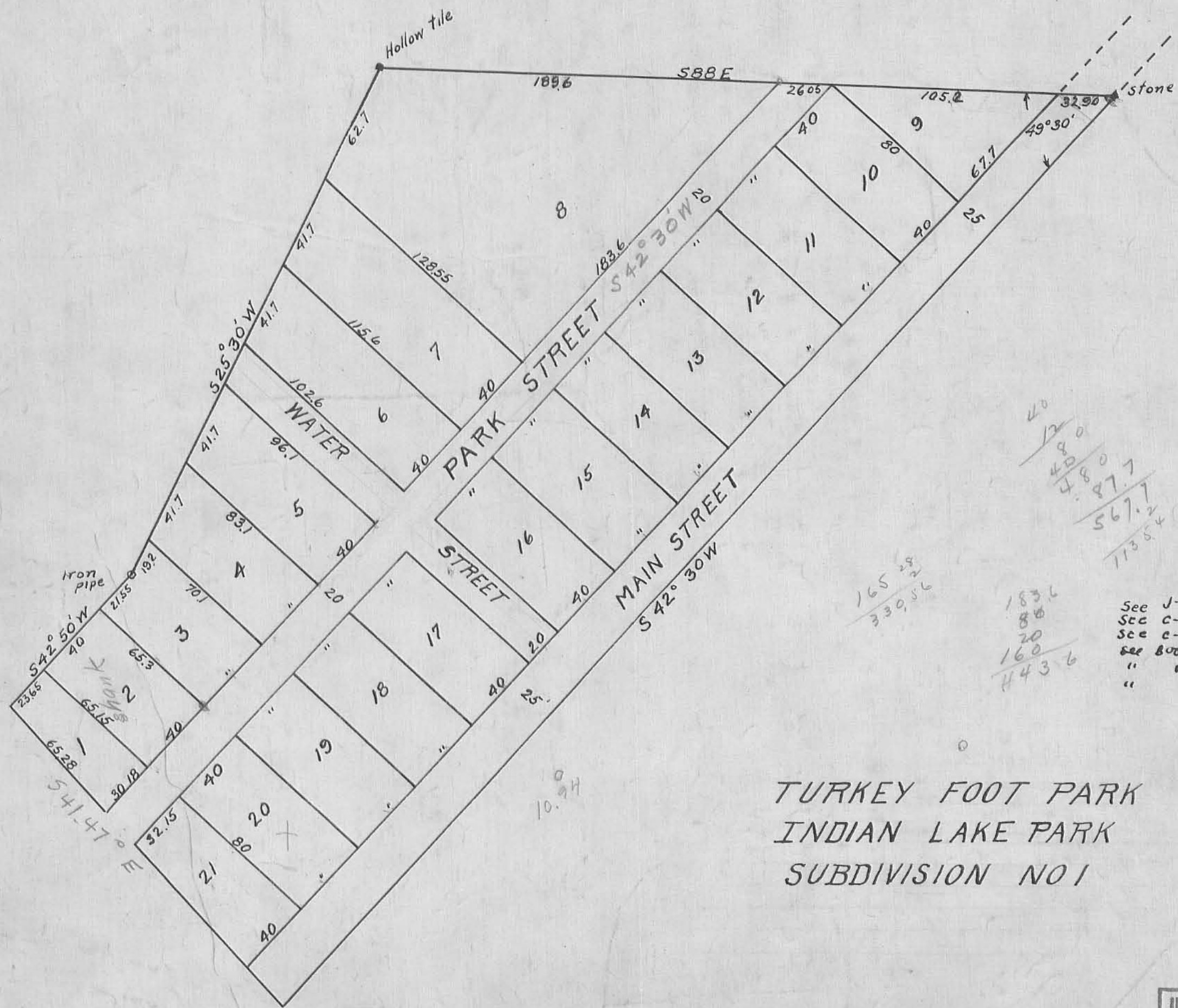
May 1924

W.A. Montgomery C.E.

INDEXED ON MAP
1043

C-34

C-34



32.90
105.2
26.05
164.15

40
12
40
480
567.7
1135.4

165.28
330.56

183.6
80.6
20
160
443.6

See J-4
See c-34
See c-4
See Book 502
" " 417
" " 570

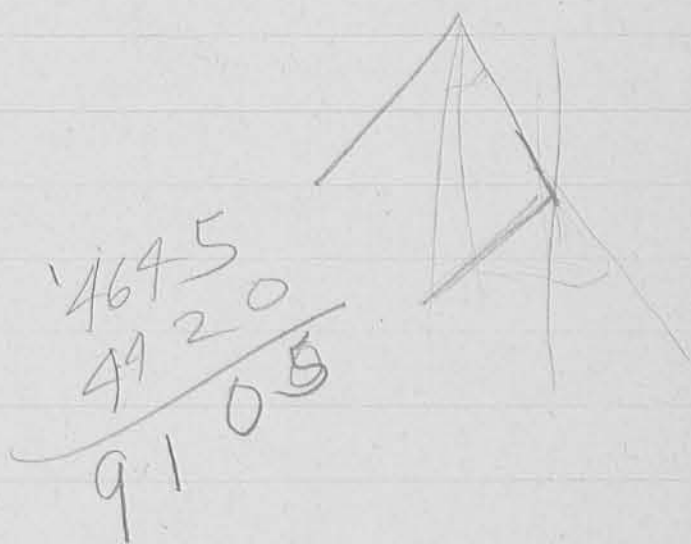
TURKEY FOOT PARK
INDIAN LAKE PARK
SUBDIVISION NO 1

INDEXED ON MAP
1643

3A

V.M.S 12276 - Stokes Township

Beg. at a stone in the E. side of the Turkey Foot Road and in the line of Hull and Newland; thence S 88°-00' W. 32.9 feet; thence S 42°30' W 786.2 feet; thence S 46°45' E 30.00 feet to an iron pipe being the beg. point of this survey; thence S 46°45' E 79.00 feet to an iron pipe; thence S 44°20' W 40.00 feet to an iron pipe; thence N 46°45' W 77.75 feet to an iron pipe; thence N 42°30' E 40.00 feet to the place of beg.; said tract containing 0.07 A. and being subject to all legal highways.



104
 60