

Road 266

19340
17980
1940

1021²⁰
2022²⁰

$$\frac{1934\frac{1}{2} \times 40}{43520} = 1178 \text{ Acres}$$

1000²⁰
2019²⁰

539

INDEXED ON MAP

2-6-34

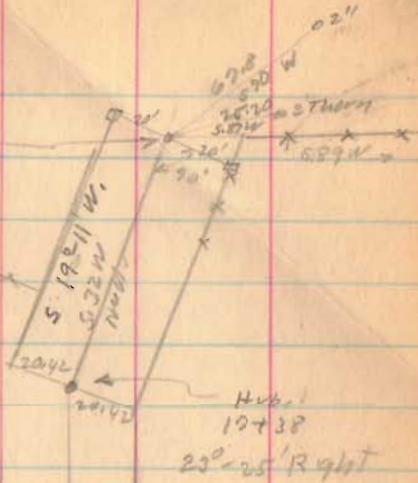
59

Length 1934 $\frac{1}{2}$ Feet.

Length .3664 Miles

Iron
19734.5
End

19771



H. 19738

23°-25' Right

20' 20'

S. 10° 14' E.

Iron
15760
15° 55' Right

2019 2019