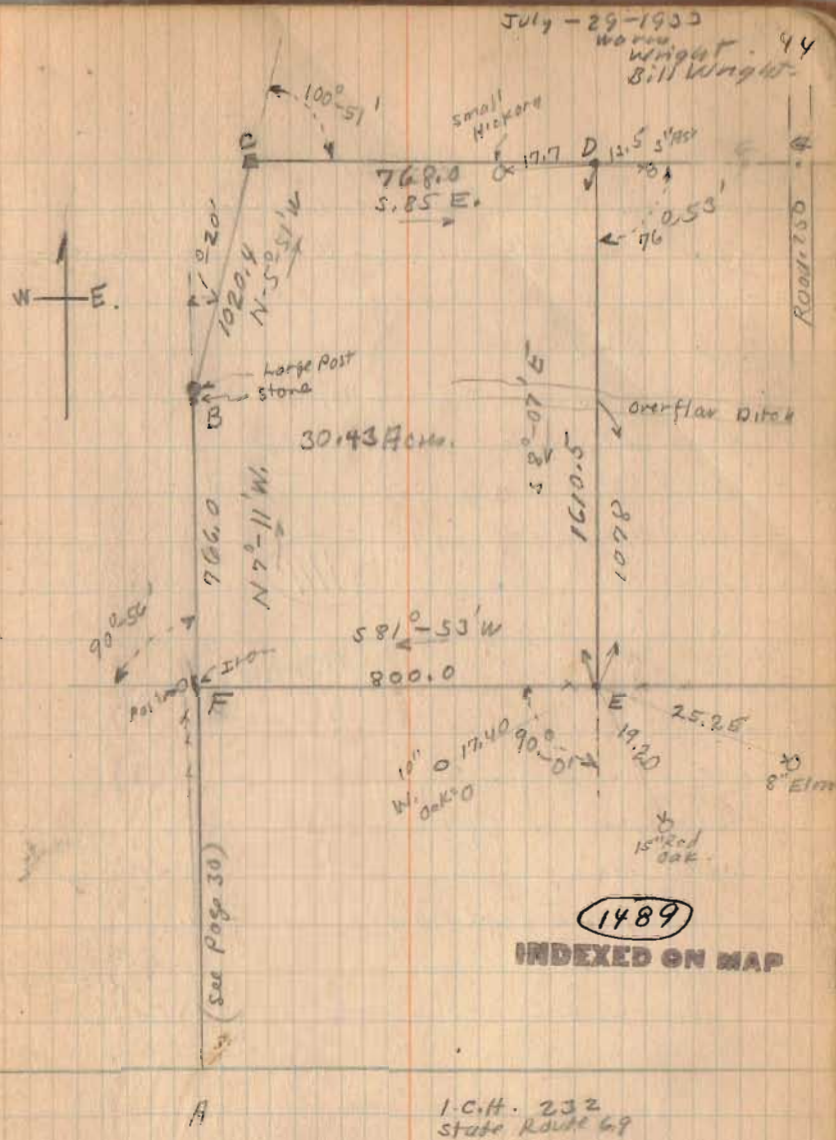


Newland survey  
Stokes Twp. V.M.S. 12277

- A - 1/2 I.C.H. (see Page 30)
- B Stone found (see Page 31)
- C " " " " "
- D Placed 1" x 36" Iron 8-2-33
- E " " " " " "
- F Iron Placed 2.75 E of Post (see Page 30)
- G Stone (see Book 588 Page 41)

see survey 1007 Stokes Twp. Drawer R  
 see survey 1397 Book 300x Page 165  
 see survey 564 Book C Page 447  
 see survey 988 Book C Page 159  
 see Page 30 This Book  
 see County Line Survey Logan & Hardin  
 Co. Plan P-24 Page 42  
 see Road Record Nail Page 192  
 Barms To Bank Vol. 147 - 559



(see Page 41 For Area)

1933

NEWLAND SURVEY

The following described land in V.M.S. 12277 and being in Stokes Township, Logan County, Ohio.

Beginning at a Berea sand stone on the line between Hardin and Logan County, said stone being known as monnument # 40 as shown in plat P\_24 Page 41 of records in Logan County Suveyor's Office, thence with the Hardin\_Logan County line S. 85°\_0' E. 768.0 feet to an iron thence S. 8°\_07' E. 1610.5 feet to an Iron in the north line of Joseph Fish land, thence with said Fish north line S 81°\_53' W. 800.0 feet to an Iron at said Fish N.W. corner, thence N. 7°\_11' W. 766.0 feet to a stone at the south side of a large oak post, thence N.5°\_51' W. 1020.4 feet to the place of beginning said tract containing 30.43 Acres more or less and being same Survey as shown in Logan County Suveyor's Book 479 Page 44.

1489 - 1D

INDEXED ON MAP