

BOOK 3

PAGE 177

AUGLAIZE COUNTY SURVEY RECORDS

RECEIVED
JUN 12 1985
LOGAN COUNTY
ENGINEERS

Survey N^o 577

Hereby certify that the accompanying plat represents correctly a survey
by me of Section # 8 in Goshe Twp. Auglaize Co. O.
F A Runkle

County Surveyor

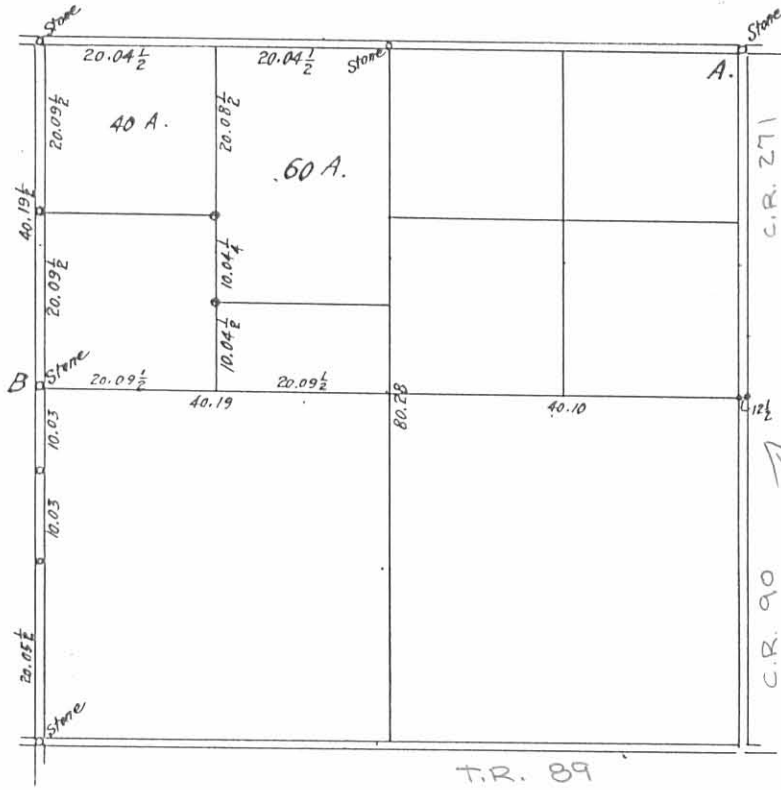
Recorded March 29-1912

J H Meyer
County Surveyor
Auglaize Co. O.

INDEXED ON MAP
1412

-1D

Section 8 - Goshen Twp.



AUGLAIZE COUNTY
LOGAN COUNTY

GOSHEN TWP.
STOKES TWP

RUNKLE CALLS FOR 2 POINTS HERE IN 1912. THE STONES FOUND ARE AT 12 1/2 LINKS OR 8.25 FEET.

INDEXED ON MAP
1412

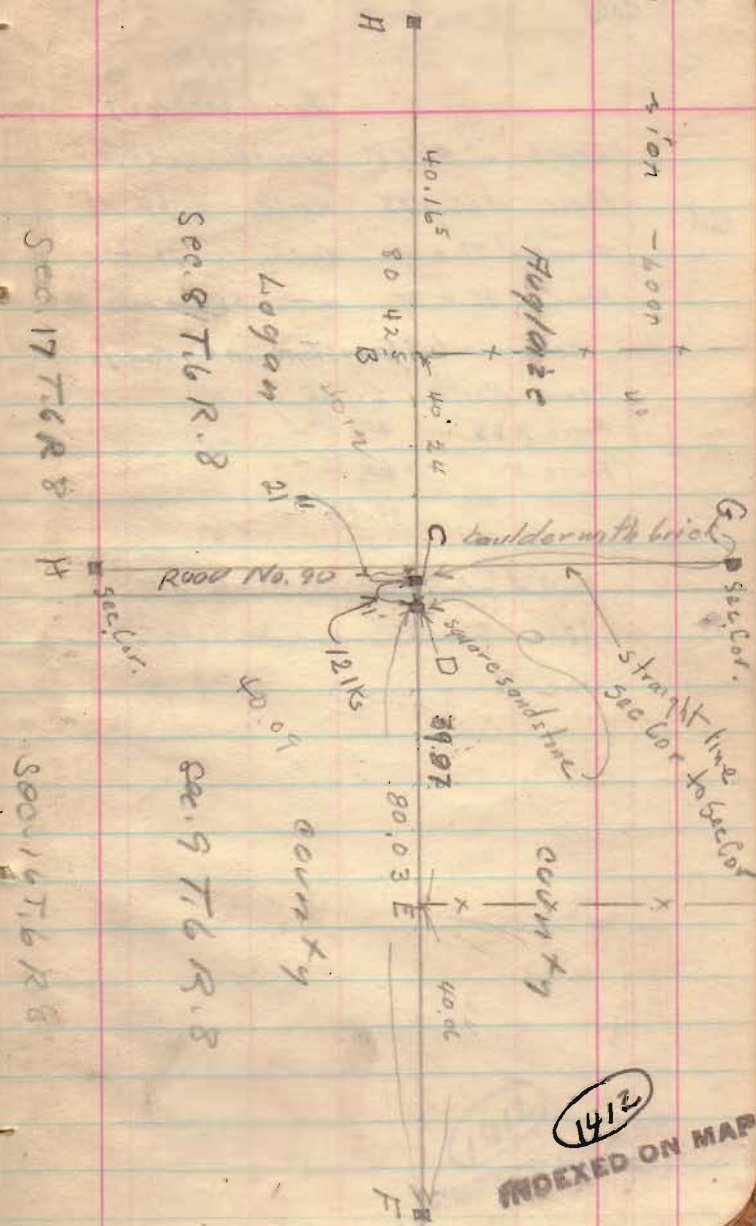
-1P

Conclusions. that the stone should set on the straight line. the stone with brick under has every indications of at some time having been set for the corner and by so doing you would cause your distance to check better at all fences.

$$\begin{aligned} A \text{ to } B &= 40.165 & 40.165 \times 2 &= 40.33 \\ A \text{ to } C &= 80.305 \div 2 &= 80.15 \\ A \text{ to } D &= 80.425 \\ B \text{ to } C &= 40.12 \\ E, F &= 40.06 & EF \\ E, C &= 40.09 \\ C, D &= 80.15 \div 2 &= 40.075 \end{aligned}$$

\therefore EF and EC would be nearer = than EF and ED.
B, C and AD would be near = than BD and AB

and if the corner were intirely gone which is the case with two stone both equally as well marked, it would go on a straight line and equal distance from ground



79

Cold

Montgomery
Wright
Smucker

April 22 1927

East

Fence at 45 + 89	North	40.06
Fence at 65 + 85	North	60.11
Fence at 77 + 14	North	72.48
Fence 85 + 77	North square	80.03

measurements from stone in @ road

Fence North	20.05
Fence N + E	40.24
Fence N	60.36
	80.42

mixed stone 24" with bricks 21"

line from NE corner stone to SE cor of
Sec 8

80.30	45.15	77.5
60.24		32
40.12		72.5
19.95		
	792	960
	720	720
	1680	
	1578	
	960	

70 40

80.12

00		
40.06	80.15	80.03
60.11	80.11	
80.15	80.27	
19.97	80.30	80.02
40.12		
60.24		
80.30		
80.15		

79

1412
INDEXED ON MAP