

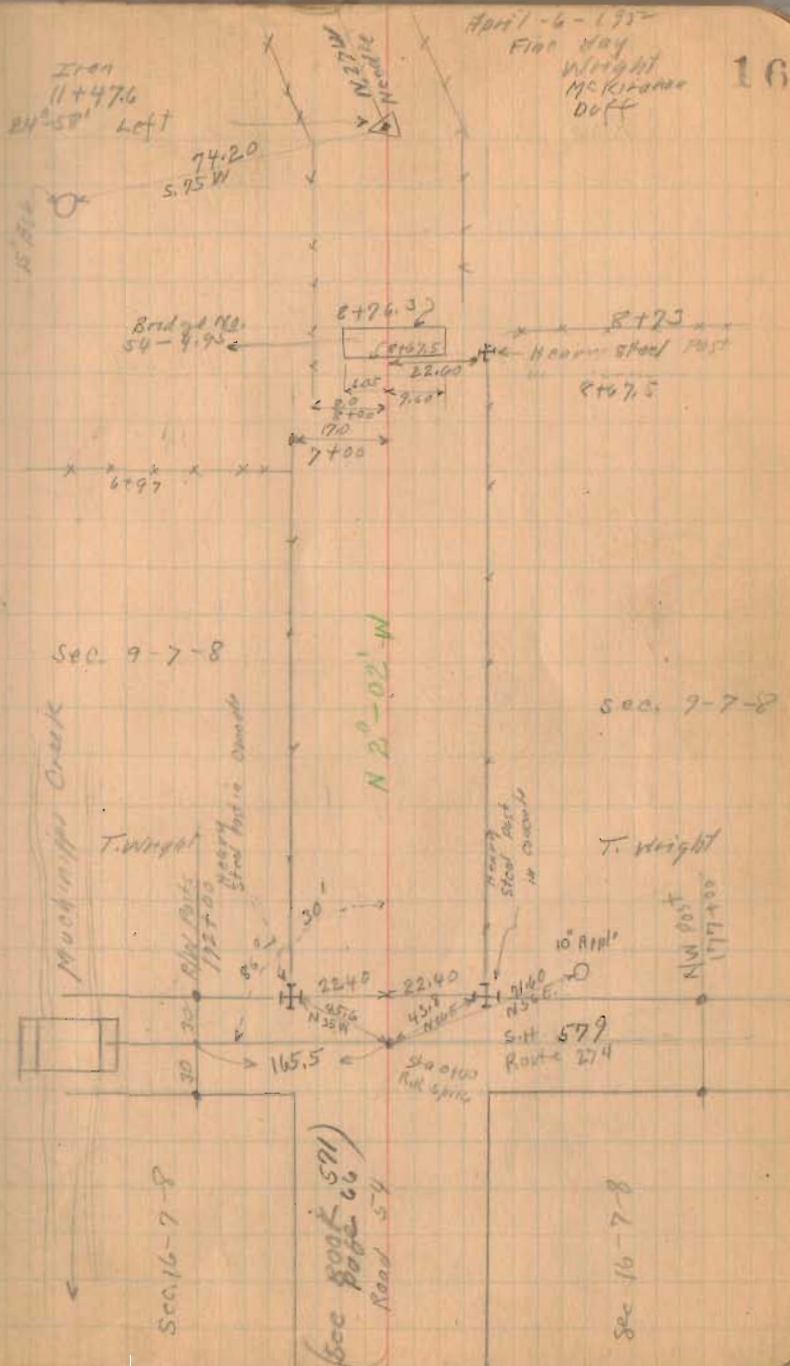
Road 54
Bloomfield and Stokes

From Miami River To Santa Fe 60'
Vol. 4 Page 162 - 163 1835

Pike record 4 Page 219 and 220 55'
1876

Stakes placed 25' from ~~to~~ for 50' Road.

(1367)
INDEXED ON MAP



Road No. 54

Concrete R/W. Monuments placed
M^e Kirahan
Duff

1+00 Left

5+00 Left

11+00 } Both

12+00 } Sides

15+00 }

17+00 }

19+00 Right

21+00 Right

27+00 } Both

31+00 } Sides

38+00 Both Sides

39+00 Right

43+00 } Both

44+00 } Sides

48+00 }

49+00 }

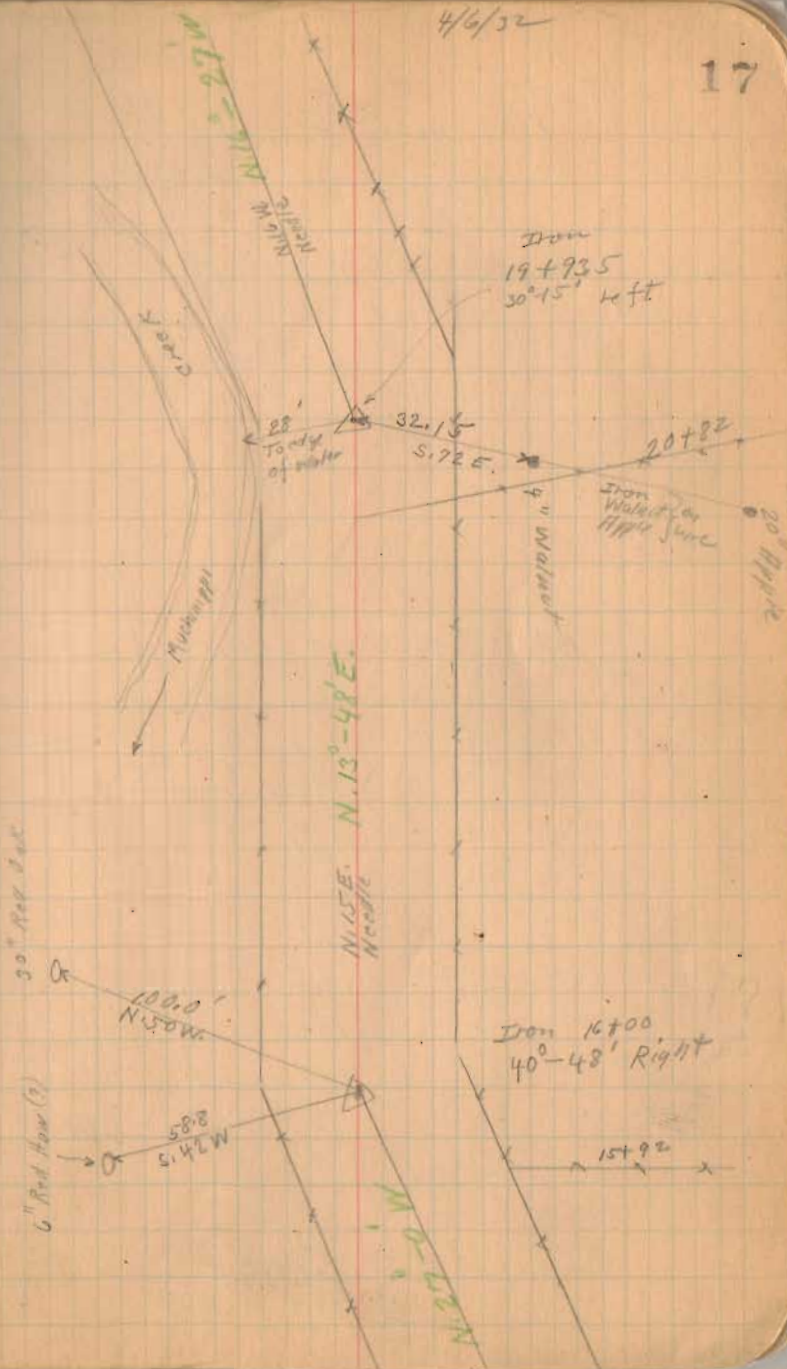
52+00 }

Set May
14-1932
M^e Kirahan
Duff

(1367)
INDEXED ON MAP

17

4/6/32



Road No 58

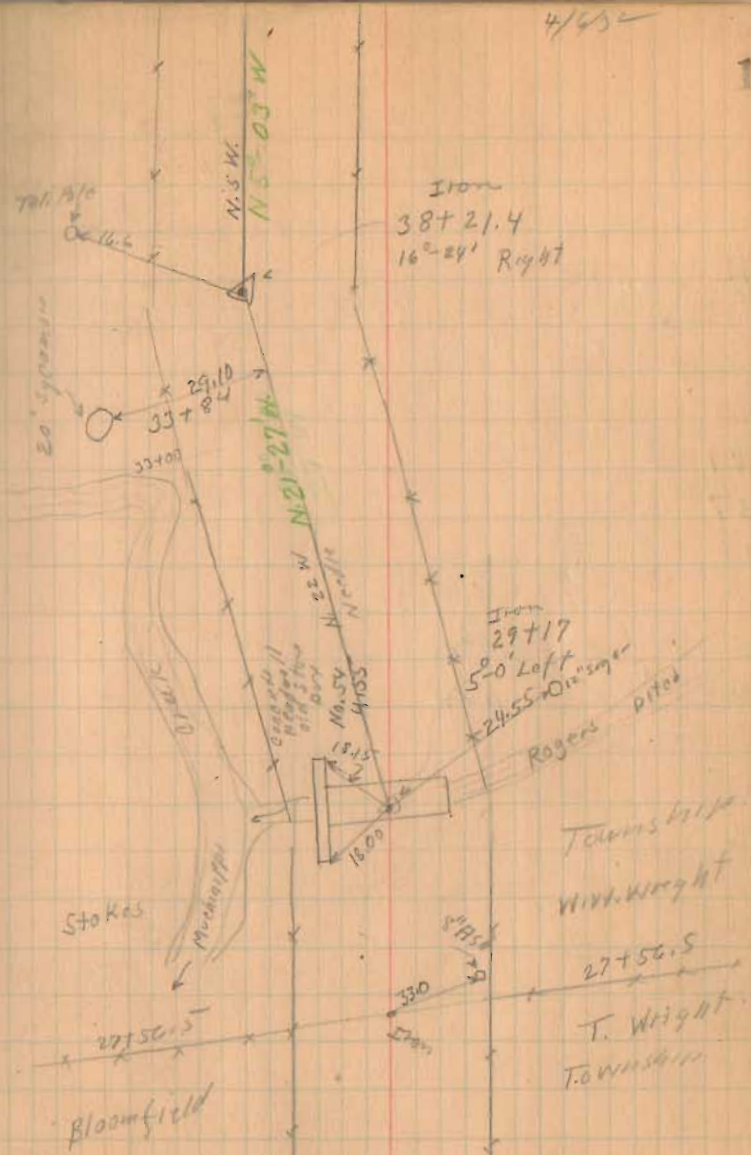
Right-of-Way Concrete Posts set

Both Sides	}	53	124	
		55	125	
		57	133	
		65	135	
		67	143+87	May-17-1932
		70+87	149	M ^{rs} Kirshen
		73	151	Duff
		75	152+67	
		87	157	
		95	160	
		97	171	
		107	185	
109	186			
115	190			
			May-20-1932	
			M ^{rs} Kirshen	
			Duff	

(1367)
INDEXED ON MAP

4/45

18



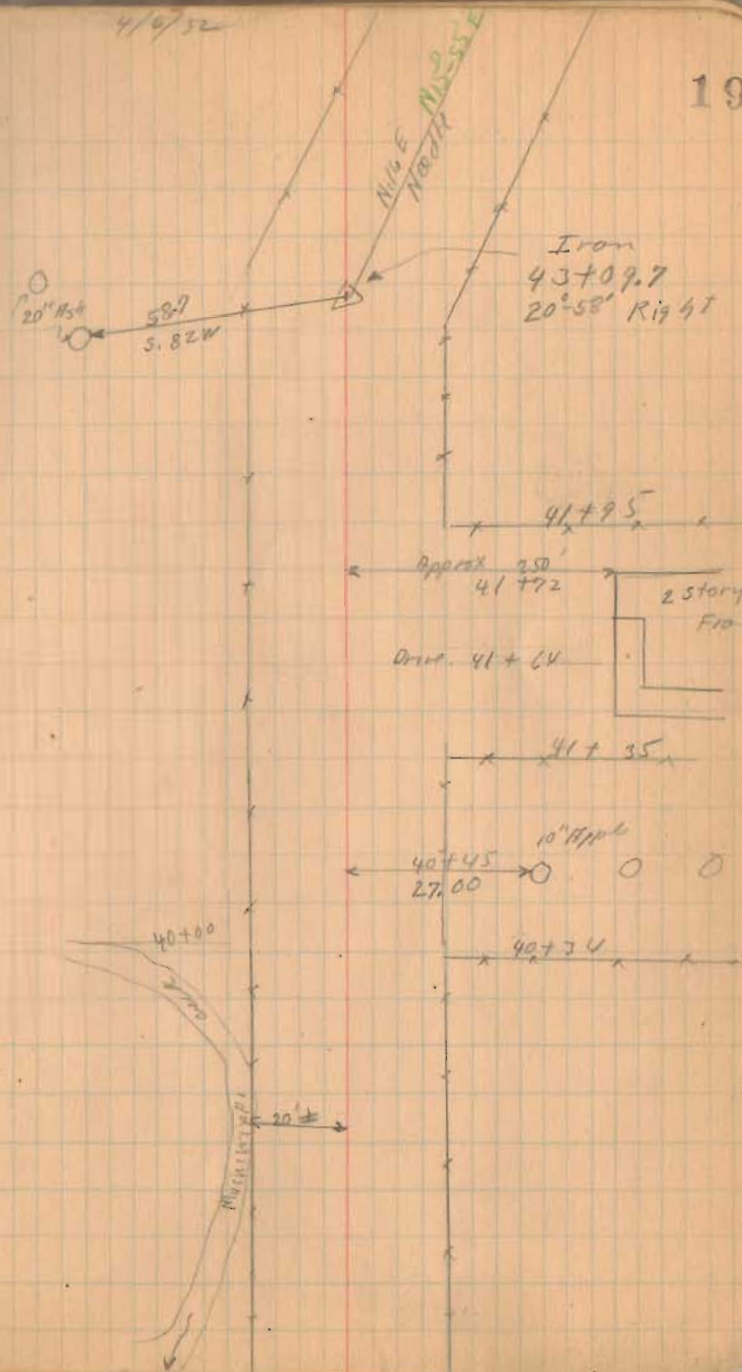
Road 54

- 191
- 199+54
- 211
- 213
- 221
- 227
- 228
- 235
- 245
- 246
- 255
- 266

May-21-1932
M^cKirahan
Duff.

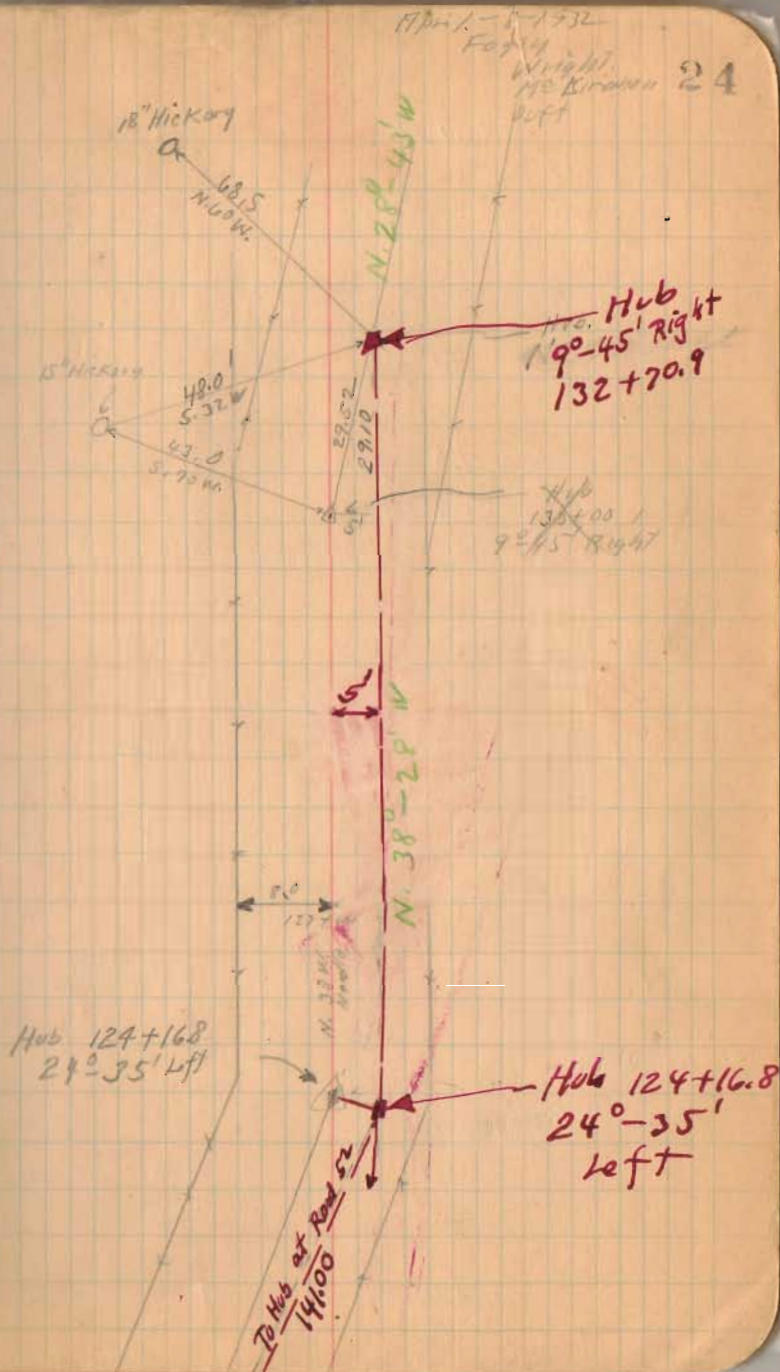
May-23-1932
M^cKirahan
Duff

1367
INDEXED ON MAP



Road 54

1367
INDEXED ON MAP



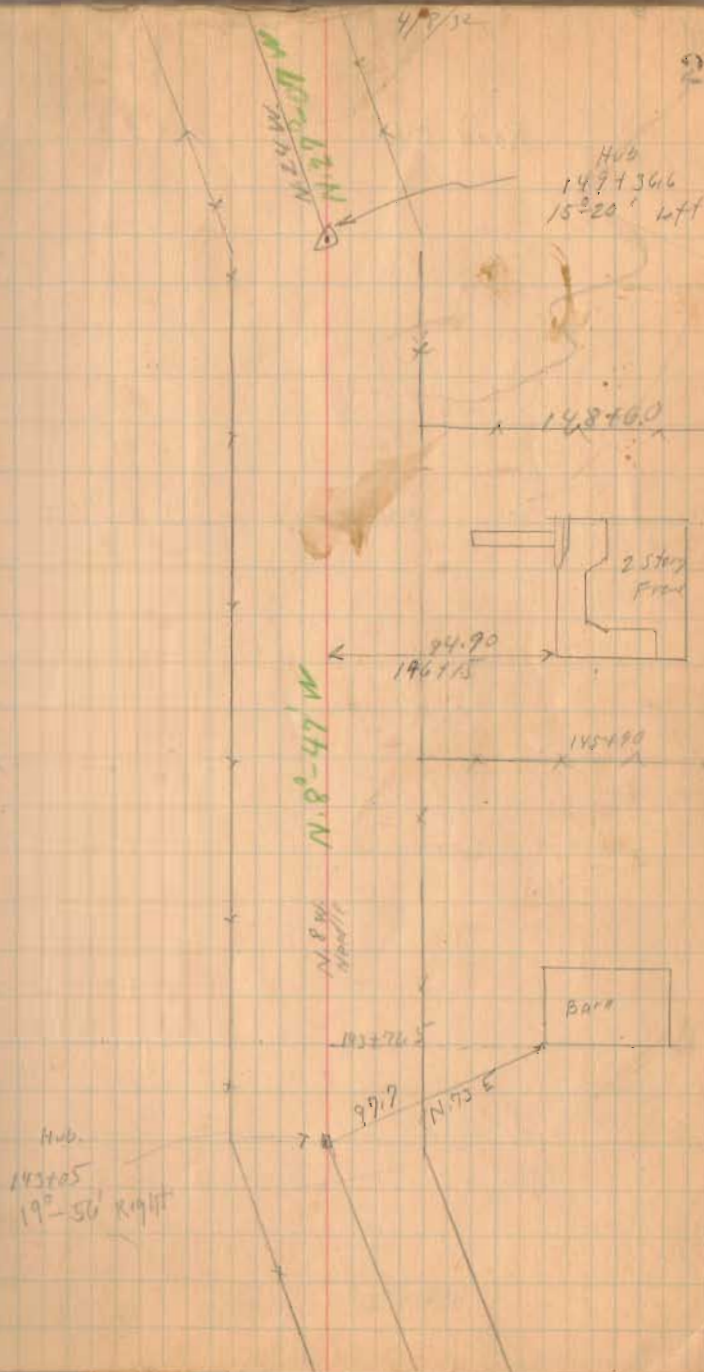
Road 51

29.5
45
73.5

1009

INDEXED ON MAP

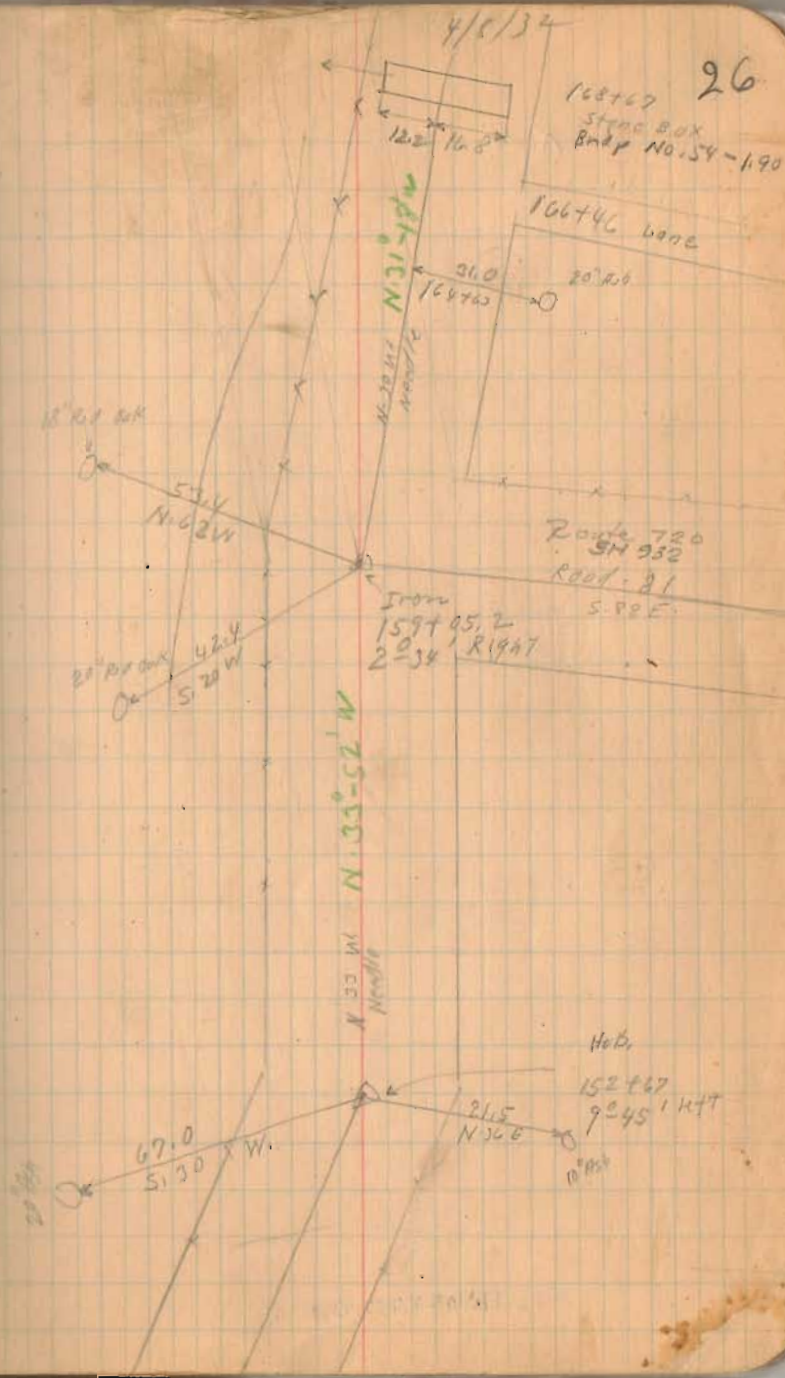
25



Road 54

29.0
12.2
16.8

(1267)
INDEXED ON MAP



Road 54

Hub
185124
142° 51' left

4/8/32

27

110° 50' N
50 S

93.5
N. 102° E.

10" Apple

40.8
N. 70° E.

183472

181752

181645
58.55

2 Story
Frame

181752

174755

RJ Metz

194733

C. Gross

(1367)

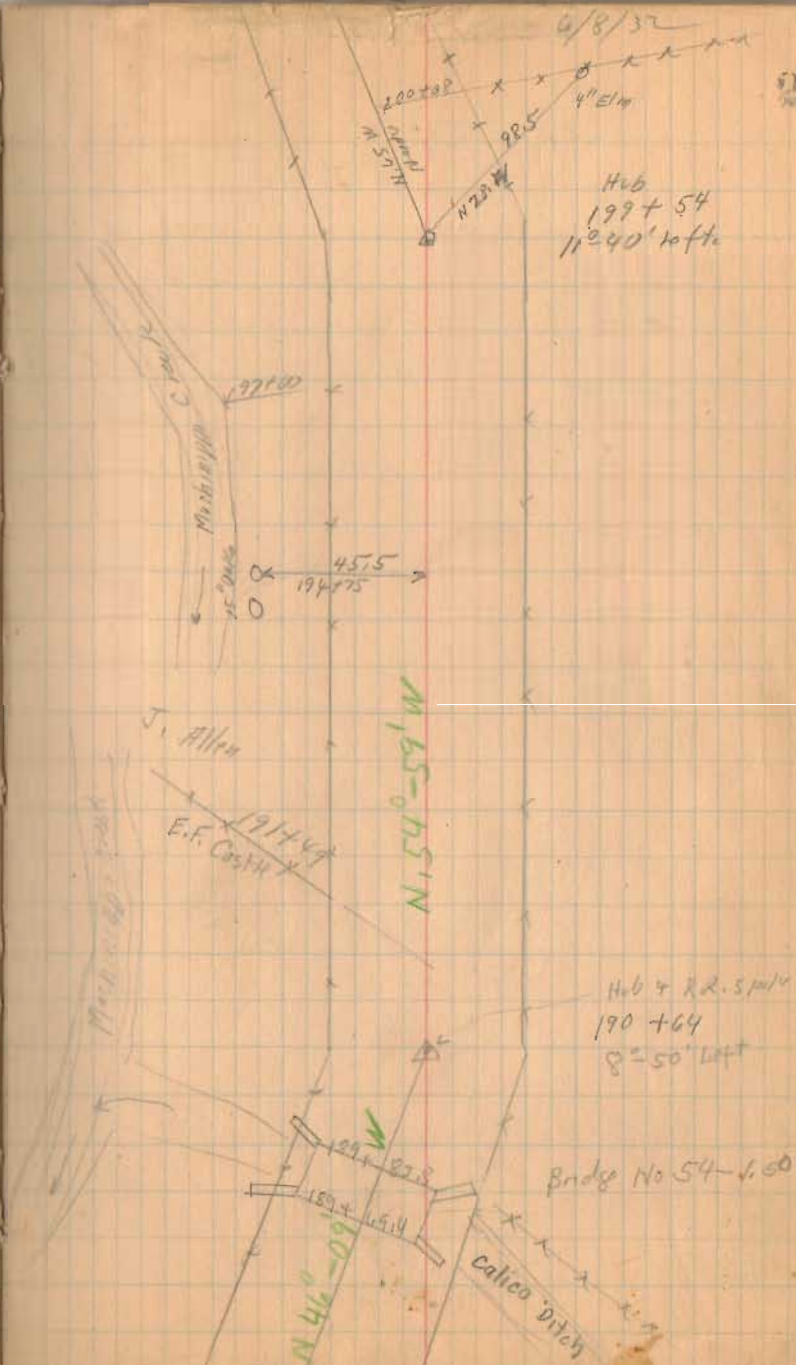
INDEXED ON MAP

Road 54

25
23.5
94.5

INDEXED ON MAP

1762



Road 54

April 15-1952

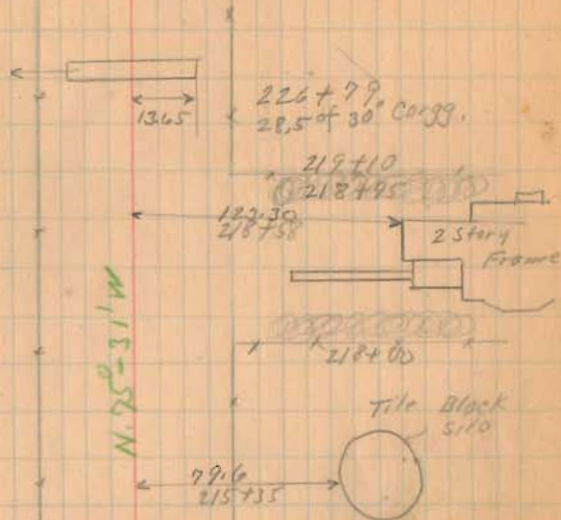
Clear

Night

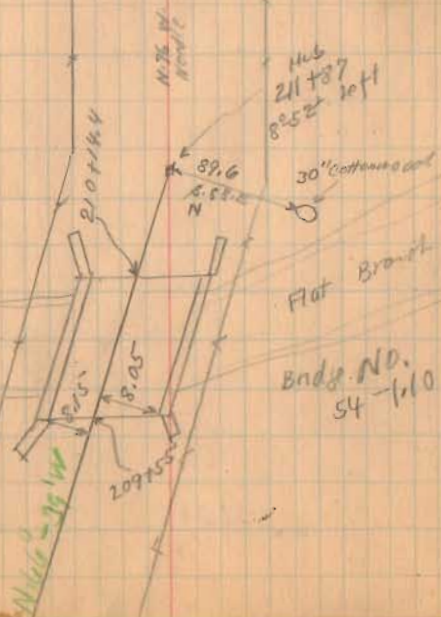
McKirahan

Duff

29



Mississippi Creek



1367

INDEXED ON MAP

Road 54

235

22763
14
17270

(1369)
NEW OR LEARNED ON WAY

Life Ins. Co.

227+06

Mary D. Miller

220+44

2-story
Pbr.
230+24

W.P.P.

10" Pbr.
12" Pbr.
46.50

55.05
Mary D. Miller N.E.

227+63

J. Allen

Hub
227+63
No Angle

6/15/52
227+80

30

52.00
237+03

2 story
Fbr.

N 89° 45' W

West
W. P. P.

Hub of P. 1.
227+77
14° 14' left.
k. shaft stall

Road No. 26

J. Allen

Room 54

240 + 79.6
3 + 96.3

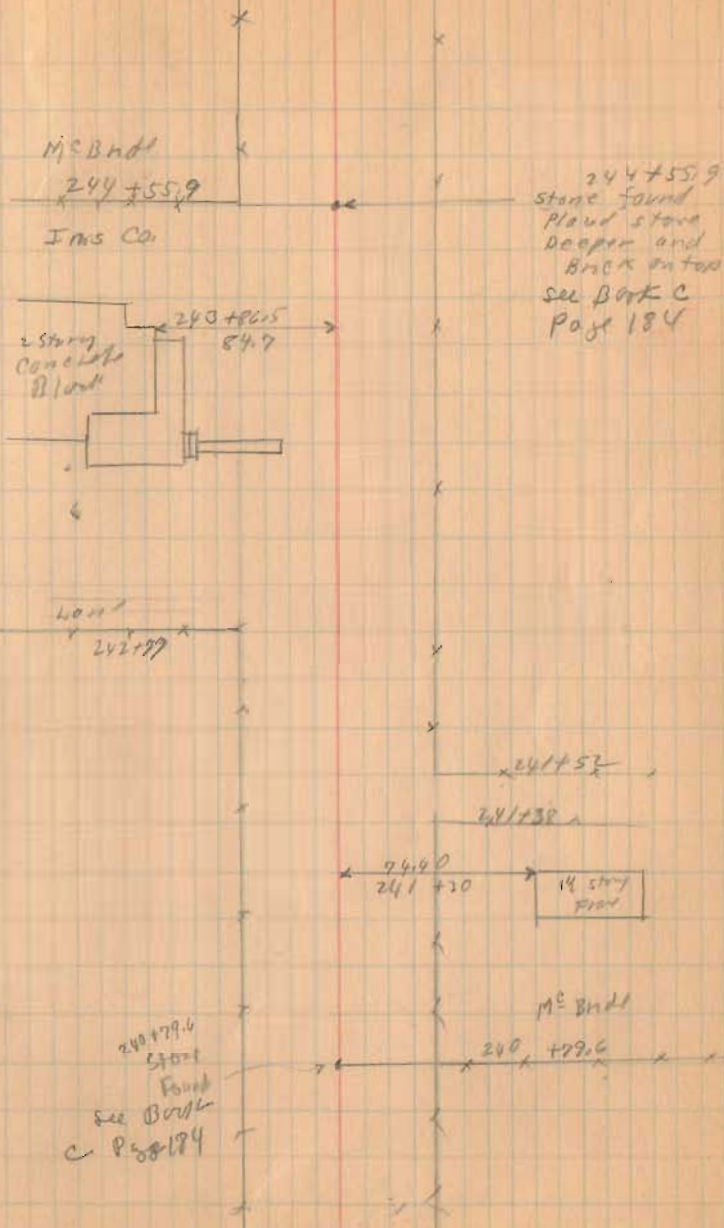
247 55.9

1367

RA 10 23 22

4/15/32

31



245

Road SW

255+00
R/W Mon.



Cecil Oakley Survey
Stokes Twp.
Sec. 30, T-6S, R-8E.

Surveyed By
Don F. Dodson
Chas. Nichols
Feb 20, 1954
50° F.

246+00
R/W Mon.

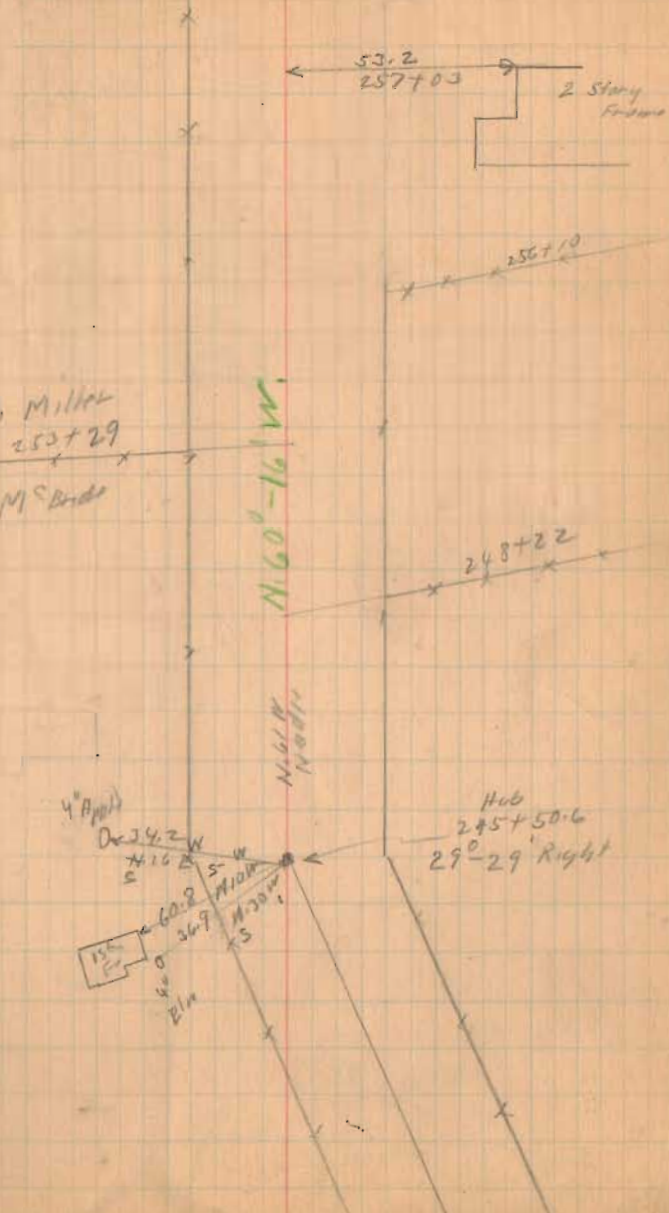
1367
INDEXED ON MAP

4/15/52

32

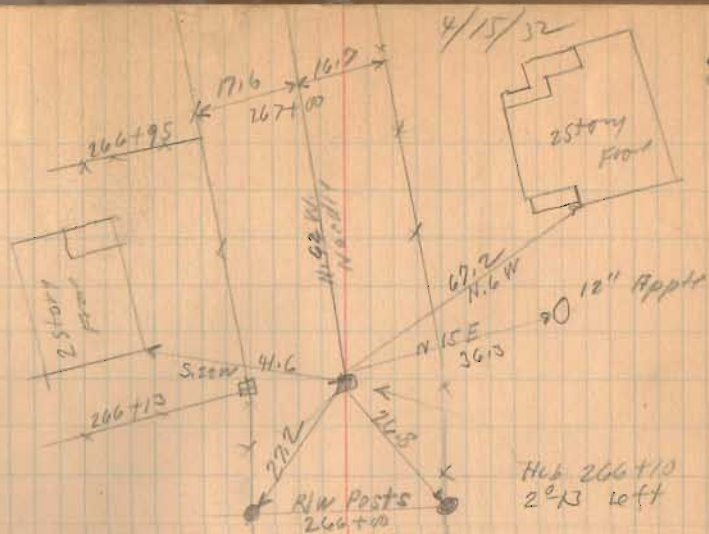
J.M. Miller
253+29
D.F. McBride

N. 60° 16' W.



Road 54

(1367)
INDEXED ON MAP

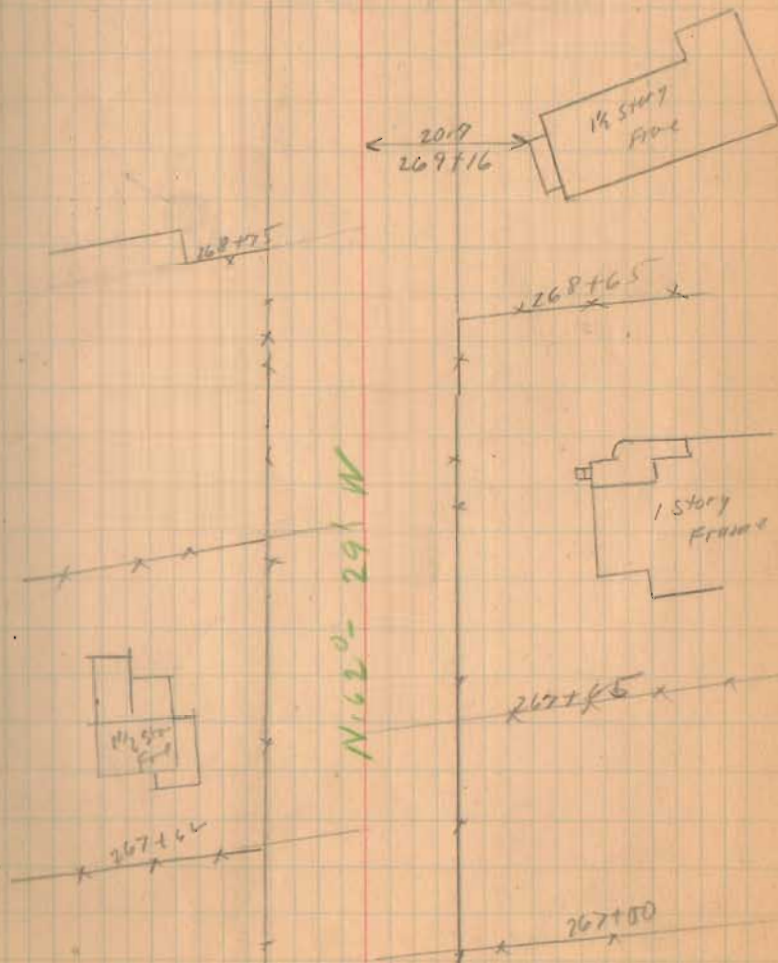


33

Road 54

4/15/52

34



INDEXED ON MAP
1367

Road 54

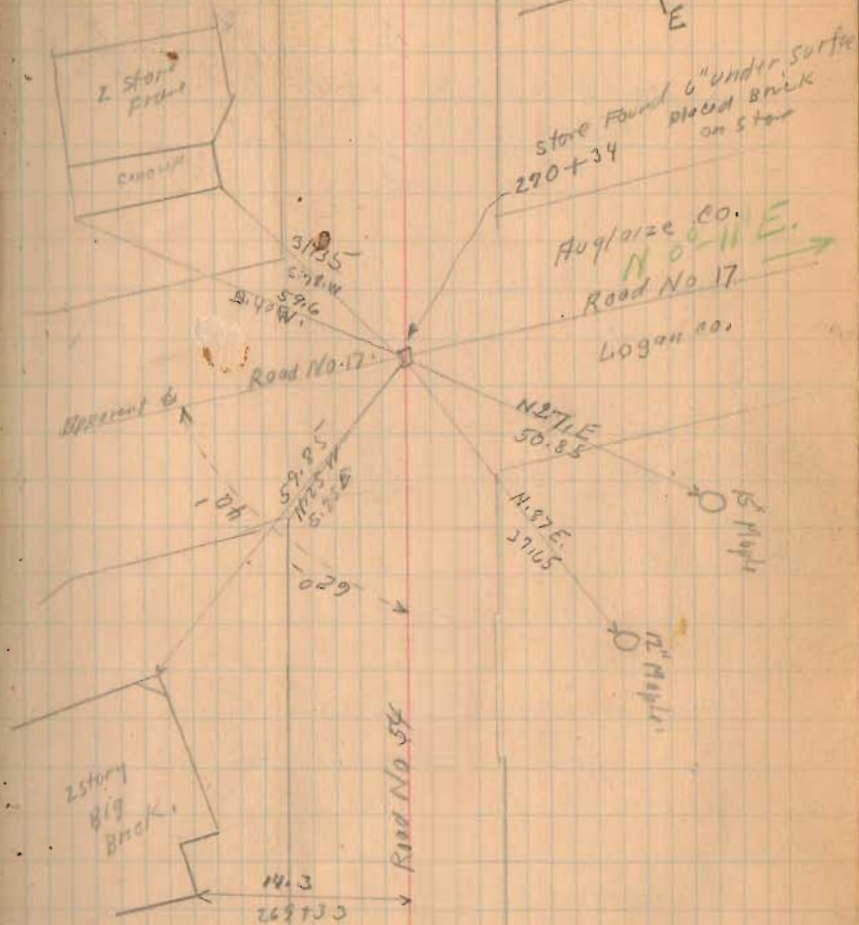
See Print Survey (1366)
Drawer R Stokes Top.

Miles 5.12005 Miles

(1367)
INDEXED ON MAP

4/15/32

35



Road 54

50' Pike Record 2 Page 481

stakes 25' from \pm 1-3-5 - 6+74.75 - 8-9
11 - 12+78.75

1367
INDEXED ON MAP

April 2-1934
Clear-Water
Wright
Ed. Coe

65

Sec. 16 Town 7
E. J. Pritchard

Range 8
E. J. Pritchard

Sit. 579
Route 274

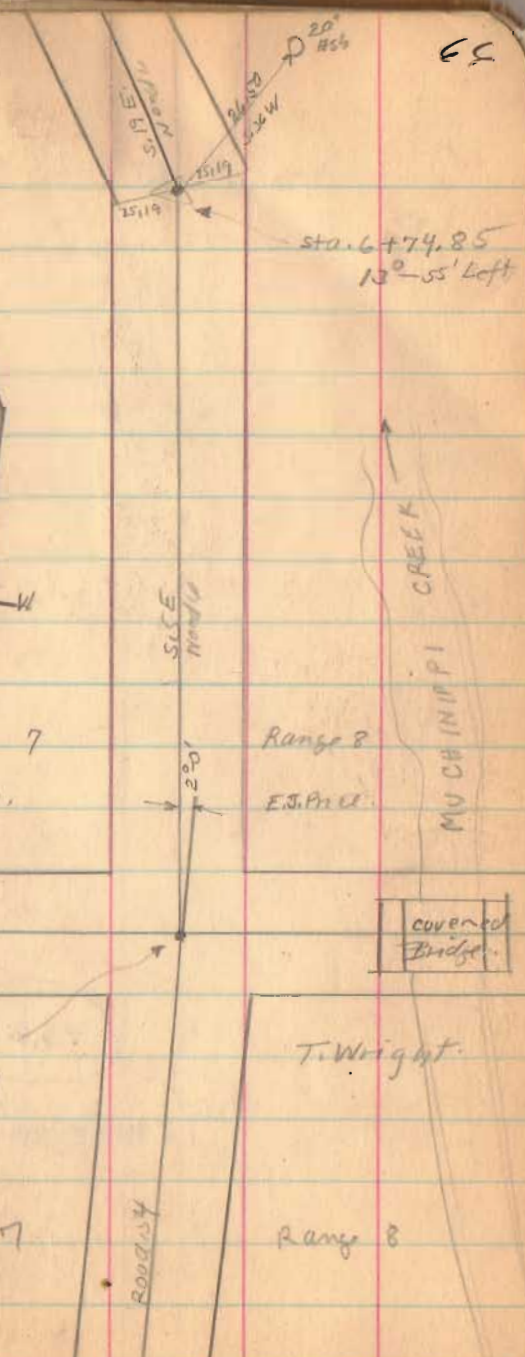
Covered
Bridge

Twigg at
Sta. 10190
Rising
see Book 559
Page 16

Sec. 9 Town 7

T. Wright

Range 8



Road 54

1367

INDEXED ON MAP

4-2-34

67

