

C. A. Inskip
3-26-31

E. Core

Survey 12276

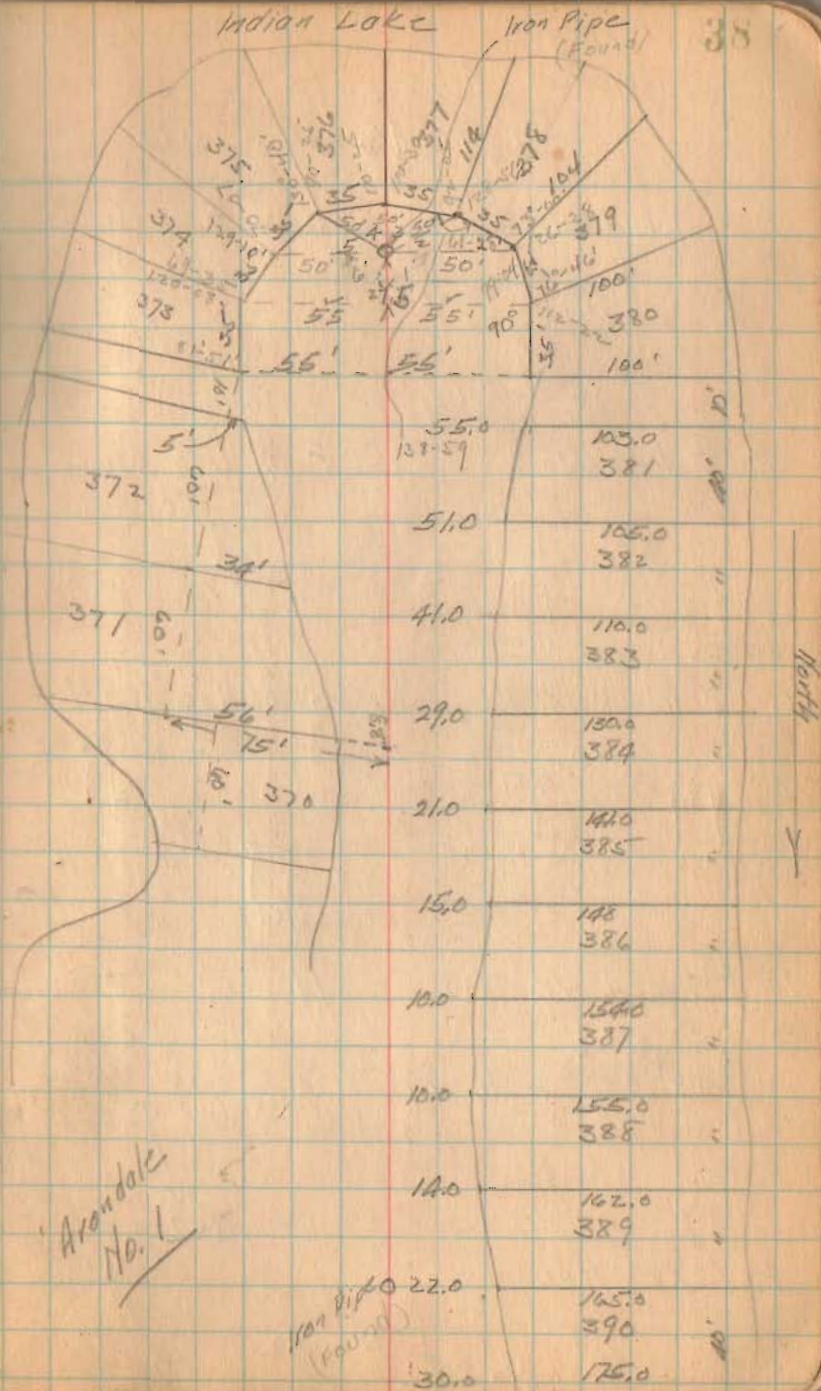
STOKES TWP

Logan Co. O

Arondale No. 5

Angle	1	98-05
	2	110-54
	3	41-01
	4	40-51
	5	40-59
	6	98-10
Total		360-00

1236
INDEXED ON MAP



INDIAN

LAKE



AVONDALE
 ON INDIAN LAKE
 J. C. & MYRTLE JACOBS
 BY
 R. KEYS SHIREY
 2338 MONROE ST. — TOLEDO

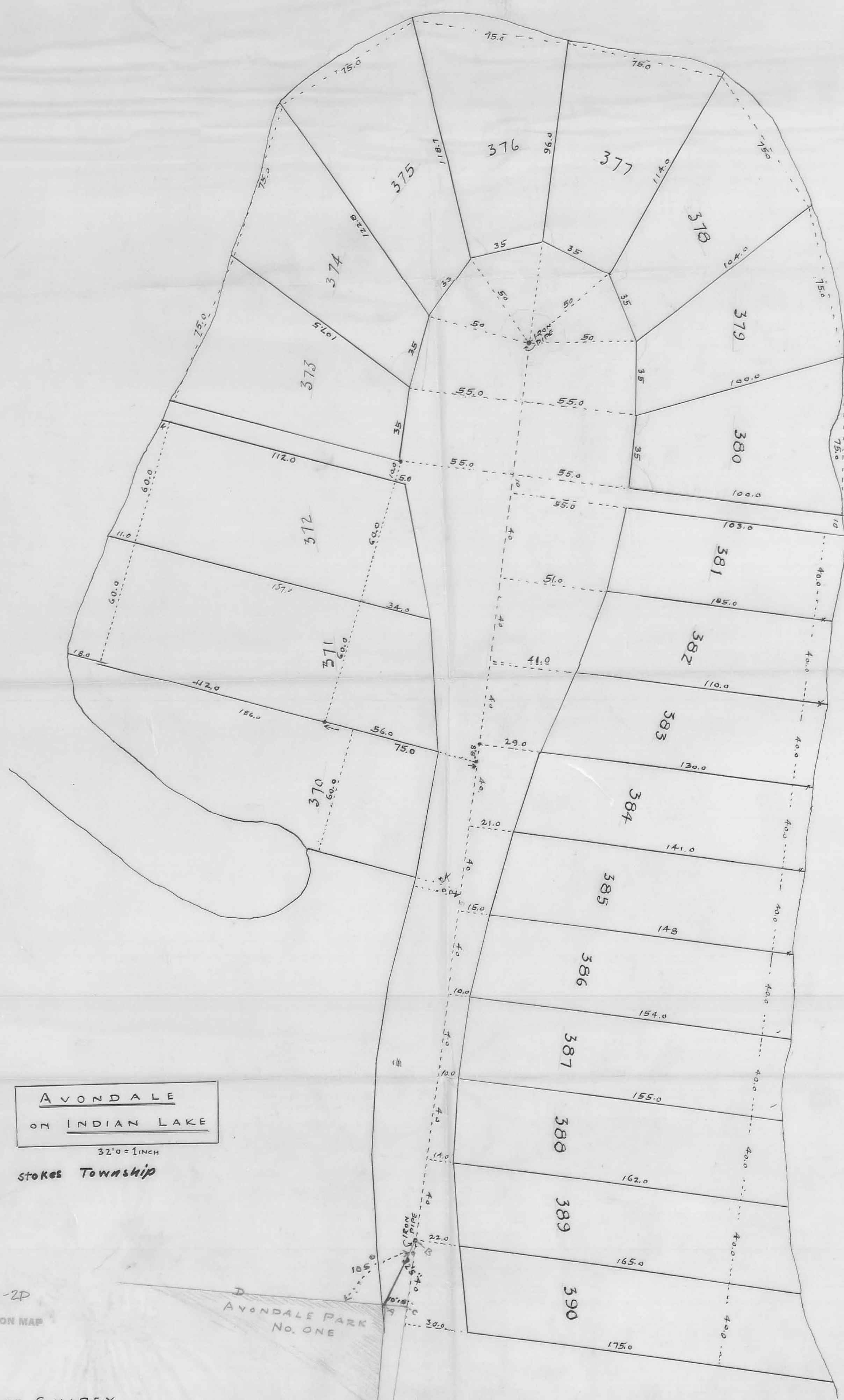
2

18-15-30

Stokes Township.

1236 - IP
INDEXED ON MAP

40.0 BUILDING SET BACK LINE



AVONDALE
ON INDIAN LAKE

32' = 1" INCH

STOKES TOWNSHIP

INDEXED ON MAP

AVONDALE PARK
No. ONE

R. KEYS SHIREY

ARC AD to AB 105°
A to B 33' 8"
A to C 10' 10"
B to C 32' 5"