

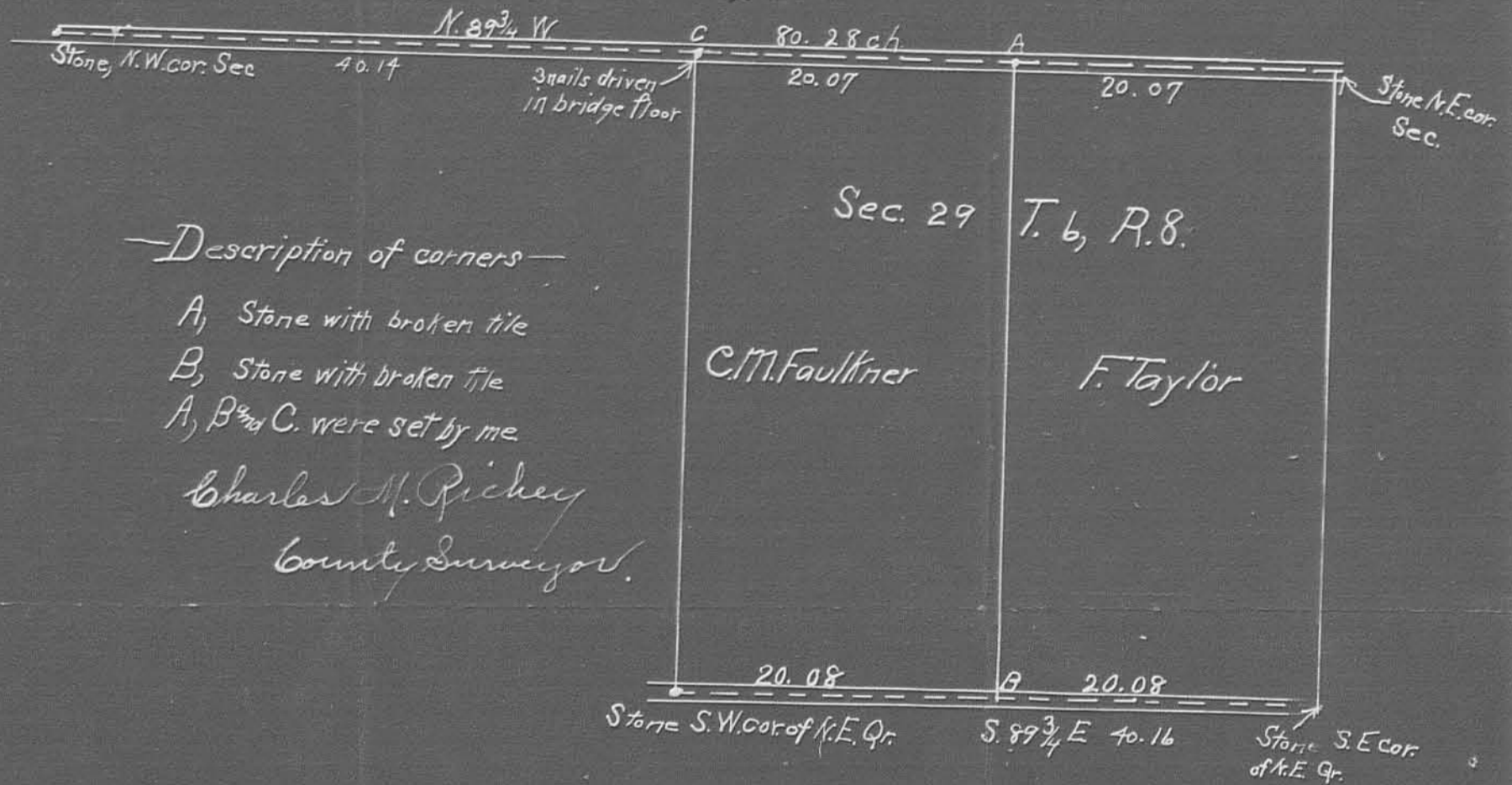
Surveyed for
 C.M. Faulkner and F. Taylor
 Pt. Sec. 29. T. 6 R. 8.

(1011)

Stakes Township

April 5, 1907.

See Book "D"
 Page 6



Description of corners

- A, Stone with broken tile
- B, Stone with broken tile
- A, B and C were set by me

Charles M. Richey
 County Surveyor.

Detail at C.

