

1006

INDEXED ON MAP

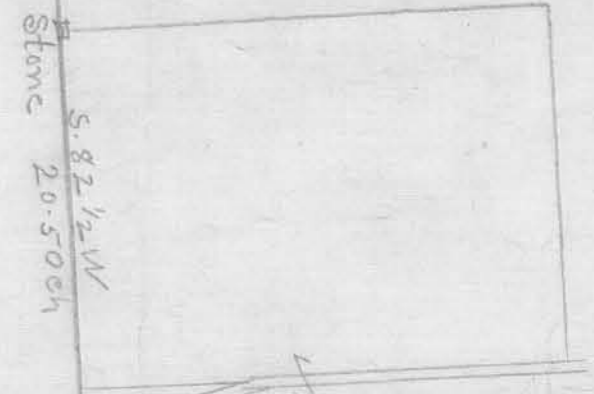
Wonders Survey

1902

Vol. P 307

Albert Bates

VMS 12277



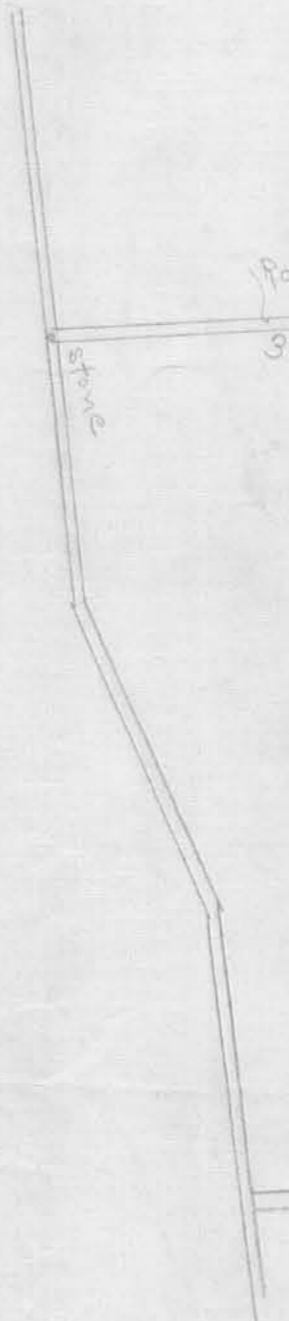
Stone
5.82 1/2 W
20.50 ch

Stone
N. 82 1/2 E 44.91 ch.
44.91 ch to stone

Stone
W. 14 1/4 W. 14 1/4 W. 14 1/4 W. 14 1/4 W.
W. 14 1/4 W. 14 1/4 W. 14 1/4 W. 14 1/4 W.
14' Pin Oak 57 3/4 E 44 links

Dennis Denny

Stone
W. 14 1/4 W. 14 1/4 W. 14 1/4 W. 14 1/4 W.
Elm Stump
N. 78 1/2 W. 37 lks
Elm Stump
N. 5 1/2 E 31 lks.



Berea Stump in boundary line.

Hardy and Logan County line

Stone - Wm. Wonders 115-94

Sum 12277

5.80 W. 25.75

Milton Patrick

N. 9 1/2 W 24.22

Stone

Stone

W. 13 1/2 E 13 1/2 links
N. 88 1/4 E 13 1/2 links

Stone
Corner to Rowland and Thelma P.

F. Stake and Stone in meadow
surround. W. 14 1/4 W. 14 1/4 W. 14 1/4 W. 14 1/4 W.
burning oak 8' (leaves south) N. 79 1/2 E
53 1/2 lks.
Willow 8' (leaves northwest) S 8 1/2 E 60 lks

Vol C. P. 447