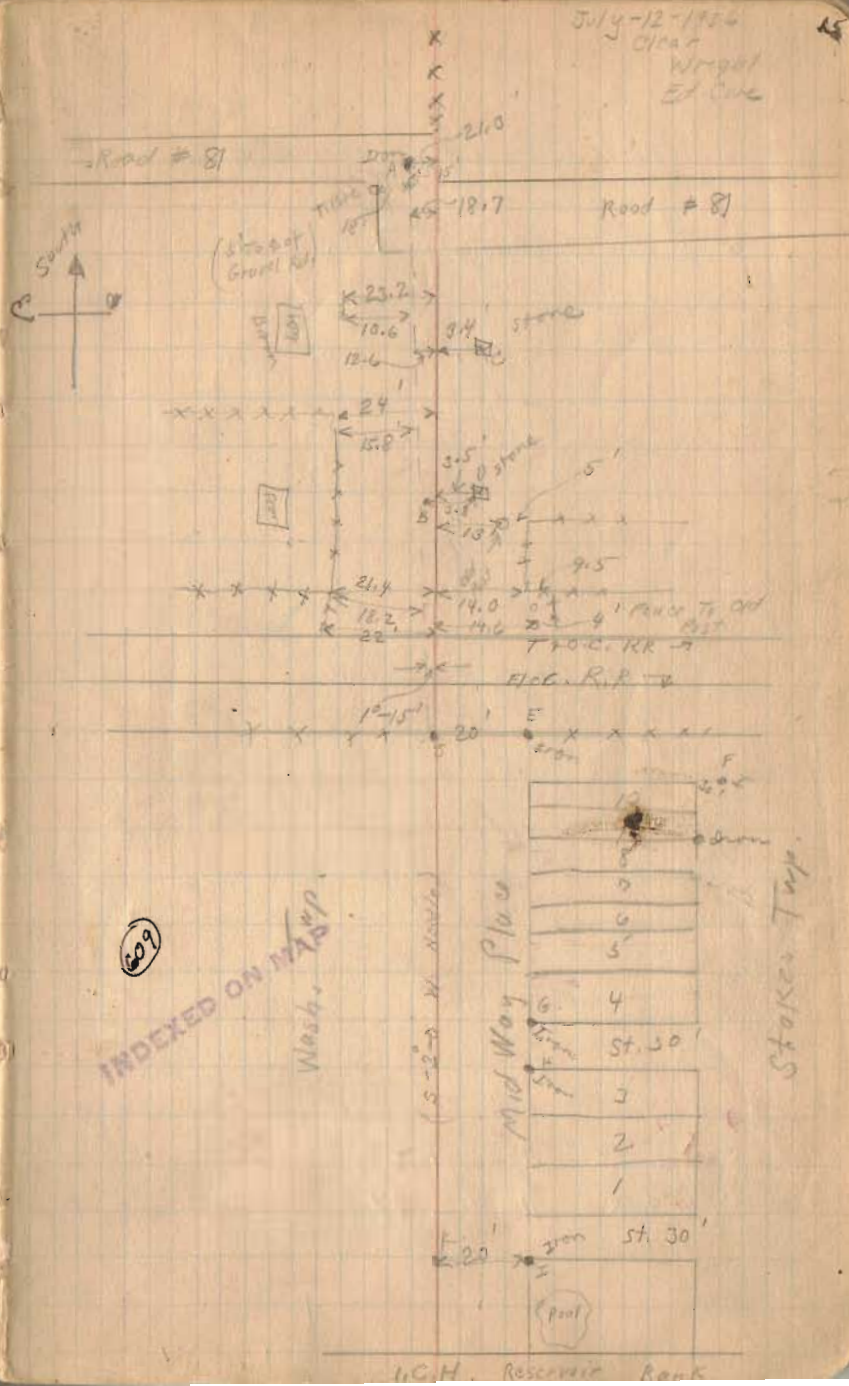


FB 418

Road Wash. ^{9th} Stokes Twp Line.
Road # 239

- A. Iron found.
- B. " "
- C. Stone "
- D. " "
- E. Iron "
- F. " " } Lot Corners
- G. " " } Midway Place
- H. " "
- I. " "
- J. Temporary Points in Road,
- K. " " " "

see Book 480 Page 51 for later survey.



FB 418

Road Wash. 9. Stokes Twp. Line
Road # 239

A
B
C
D
E
J
G
H
I

Sec - 35 T. 6. R. 8.

See Page 15

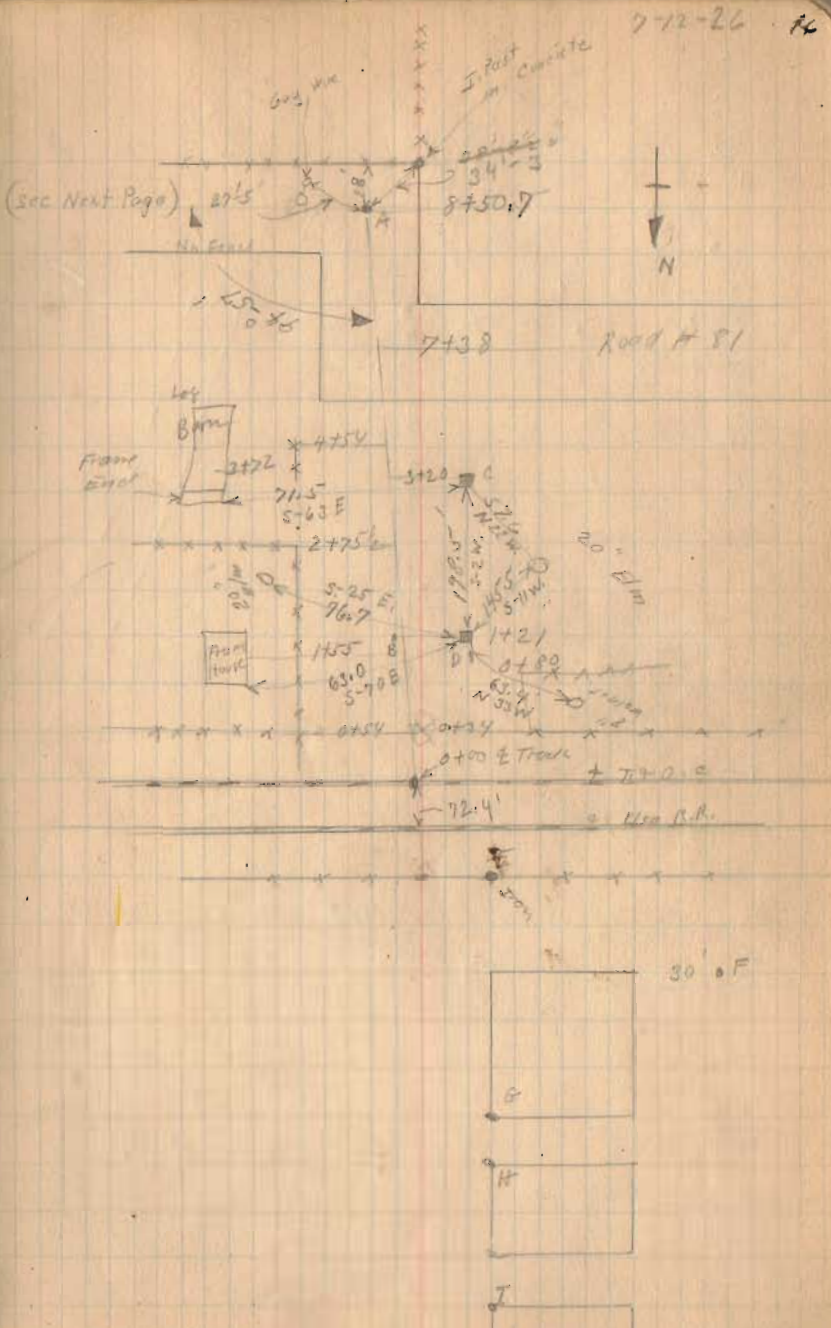
0+00 E T. & O.C. R.R.

Measured South as shown.

121
715.4
713.4

See Book 480 Page 51 for later survey.
See Book 403 Page 8
See Book D Page 97

7-12-26 HC



FB 709

T.R. No. 239

STOKES AND WASHINGTON

STA. 40 R/W.

7+68.4 R.R. SPIKE FD. SOUTH R/W
OF U.S. 33

5+63.2 R.R. SPIKE FD. S.E. CORNER TO
BANK LOT.

P.K. NAILS SET EVERY 100'
R/W STAKES ON WEST SIDE.

0+00 7/8" IRON BAR FD. BENT, STRAIGHTENED
AND RESET.

REF. A.B. 589 P. 30

DRAWER R - No. 2159

8-24-84
D. GILBERT
C. DILL
J. GODWIN

