

# Shelby Co.

## Sec 36 T6 R7

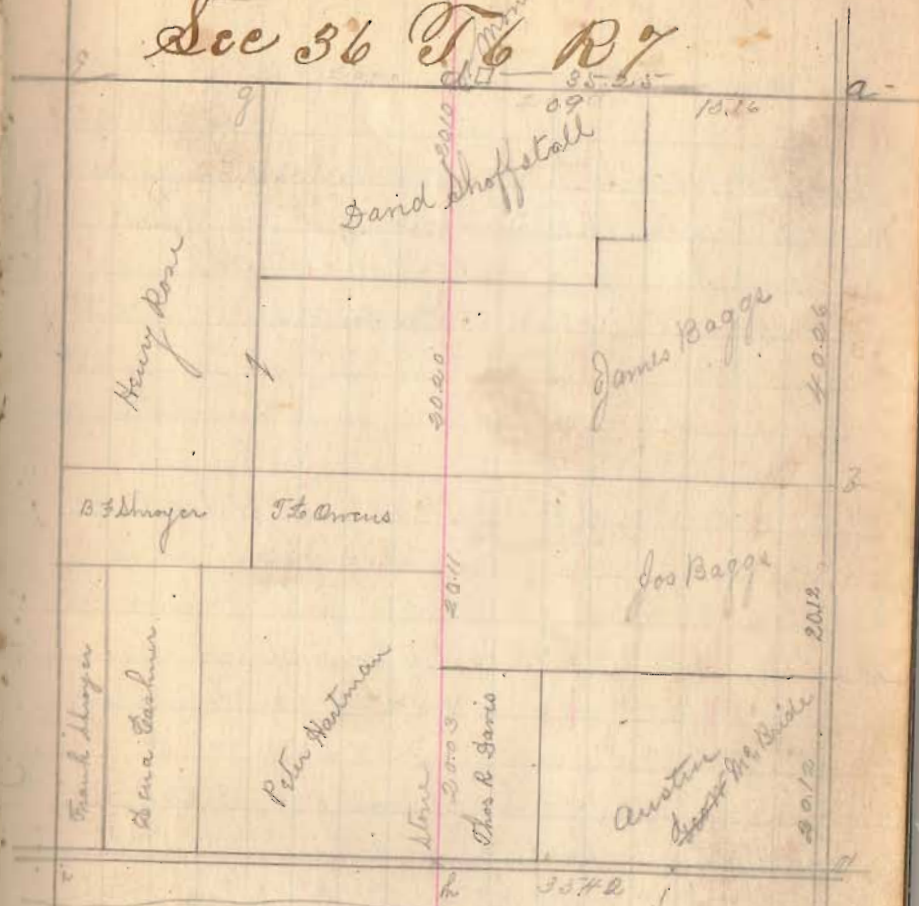
Start at a = 7m out pick line a  
 S 81° 45' W at 55.66 ft from 20 links south of 7 sec  
 from g of Mid g = bench mark 22° 0' 20" 18 links  
 also swamp ash 13 S 13 0' 22 links  
 at c a more stake at a 55.72 east 2 links and north  
 16 1/2 links to make right line a d g  
 with to d (as at stake) water bench 7 2000 44 links  
 also swamp ash 11° 45' 0' 40 links  
 From a west 14.52 to stake d on line  
 but not set to ok line a d of more north 2 links  
 August 25<sup>th</sup> 1884. By agreement B.W. Pampfel  
 Samuel Craig Kinross appointed for Aug.  
 Geo & S. B. Buchanan met middle of  
 N. line Sec 36 T6 R7 and on examining  
 the ground in reference to stakes by James Bagge  
 and remains of top root of Oak orig. set from 267 =  
 16 link set stake for c also from stake 5332 26 links  
 and find remains of swamp ash orig. set and then  
 dig at stake and find points of old stakes and the hole  
 in which original bee line stake stood. Last stake en-  
 tirely rotted and gone. Both stake points and hole of  
 orig. stake in place 1 foot square. The above stake  
 more 41 links east of c a. that is from a 55.25  
 chains

352

INDEXED ON MAP

35.72  
 35.66  
 41

## Sec 36 T6 R7

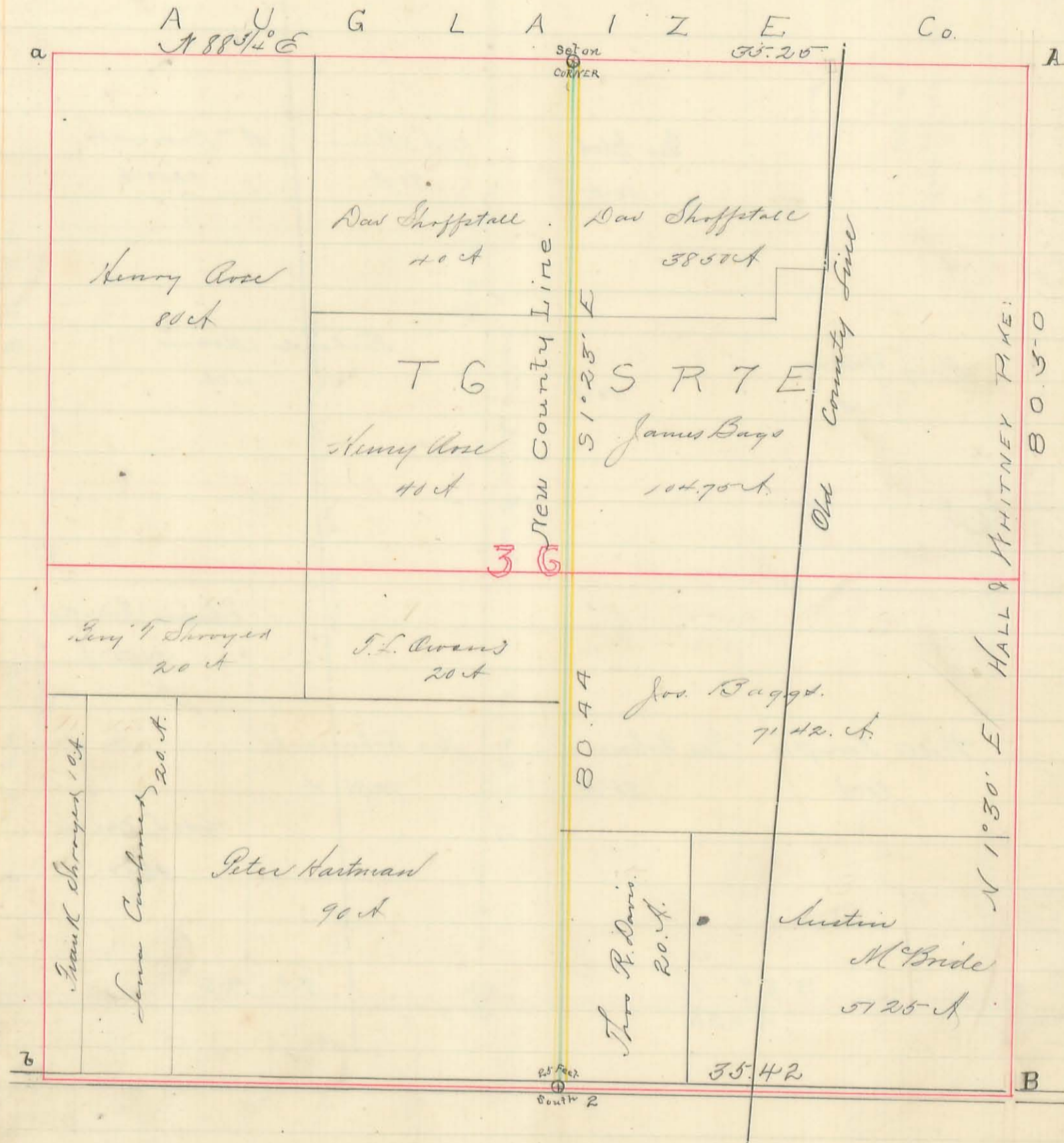


Old gov field notes Sec 36 as follows  
 a = Red Oak 24' x 28" N 100' chimney 11" 664 or 55  
 f = Bush 20' x 20" x 36" thick 11 S 24 or 34  
 c = Dye 32' S 10 W 11 4' wash 25' S 82 E 51  
 h = Oak 12' corner tree & Red Oak 12' S 45 W 31  
 j = wash 12' di. i to j = 60 72' i to e = 78.75' x h = 40.00  
 h e = 35.05 d a = 35.04 j h & e d = 40.00  
 d = Pigeon Oak 169 or 15 lbs & Oak 8" S 35 E 26



Plat of Sec. 36. T. 6. R. 7.

Shelby and Logan County Lines





— Report of, —  
— County Line Survey. —  
— Between —  
— LOGAN & CHELBY —  
— COUNTIES. —  
— 1884. —  
— — —

Filed Jan'y 12<sup>th</sup> 1885  
Geo. H. Allen  
Clerk

Recorded on Journal No. 1  
Page 261 to 269



To the Clerk of the Court  
of Common Pleas, of  
Logan Co. Ohio.

The undersigned  
surveyors of Shelby & Logan  
counties, make the follow-  
ing report of the survey:  
location & marking of the  
new county line, between  
Shelby & Logan counties,  
north of the Great Miami  
River, as changed & estab-  
lished by the Sixty fifth  
General Assembly of Ohio  
April 11<sup>th</sup> 1833. as follows to wit:

That the boundary  
line between Logan & Shelby  
counties be changed so as  
to run parallel with sec-  
tion lines, instead of ang-  
ling across them as it now  
does to wit:

That said line,  
be located on the North &  
South center line of section  
number thirty six, Township



six south, range seven east  
and sections one, twelve,  
thirteen, twenty four & twenty  
five, thirty six. of township  
seven south, range seven  
east, to the Greenville Treaty  
line, thence with it west  
to the center of the east half  
of section twenty nine. Town-  
ship two, Range eight east  
thence with the line throu-  
gh the center of the east  
half of said section num-  
ber twenty nine & section  
number thirty two, Range  
eight east & sections five,  
eight, seventeen & twenty, to  
the Great Miami River."

See: Laws of Ohio. Vol 80. 1855.  
Page 324.



Chains

Begin survey at corner  
of sections 16, 17, 20, + 21. Township  
N<sup>o</sup> 1 Range N<sup>o</sup> 8 east of first  
meridian at N.

Witness a W. Ch. 40 in diam.  
Bears South  $25\frac{1}{4}$  degrees east  $29\frac{1}{2}$   
links distant, and a crooked  
sugar bears South  $79\frac{1}{2}$  degrees  
east, 104 links distant. There  
is also a Fowler stone at  
this corner.

chains

South on random line bet  
sections 20 + 21 S.  $1\frac{1}{2}$ ° E.

3214

Centre of Miami Valley Joint  
Pike. Bears N  $55$ ° W

4187

Strike 9 links west of post  
on north bank of Great  
Miami River, corner to Sec's  
20 + 21 at O. Where a W Hick-  
ory 20 in. diam. bears N  $57\frac{1}{2}$ ° E.  
 $80\frac{3}{4}$  links distant, and an Ash  
18 in. diam. bears S  $36\frac{1}{4}$ ° W,  $111\frac{1}{2}$   
links distant:

Corrected course of line bears  
S.  $1^{\circ}37'$  E.

Returned to corner of Sec's



Chains. 16. 17. 20 + 21 at N.

West in road on line bet  
secs 17 + 20. S 87 1/2° W.

2000

Set post on County line for  
monument at N° 14.

Road turns south here

3066

Boulder stone at William John-  
ston's north east corner and B  
F Allebaugh's north west corner.

4000

William Johnston's west line.

4310

Centre of Miami Valley Joint  
pike.

4646

Centre of North abut of Miami  
river bridge.

Traveled back to County line.

South on County line S 1° 37' E  
Boulder stone on river bank  
on county line 10 feet north  
of average waters edge at N° 15

Returned to corner of Sec's  
16. 17. 20 + 21 at N.

North in road on line  
between secs 16 + 17 N. 1 3/4° W.

4020

Centre of 1/4 Sec. line fence

INDEXED ON MAP  
1884 1D-5



60<sup>27</sup>

Centre of 40 acre line fence.

80<sup>44</sup>

Corner of sec's 8, 9, 16 &amp; 17, at M.

Went on random line bet Sec's  
8 & 17 S 87 $\frac{3}{4}$ ° W

20<sup>00</sup>

Set temporary post for county  
line at N<sup>o</sup> 13.

40<sup>04</sup>

Fell 38 links south of  $\frac{1}{4}$  corner  
stone at S. Correct bearing of  
line S 88 $\frac{1}{4}$ ° W.

Returned to temporary post at  
county line and <sup>moved</sup> it 19 links  
north and 2 links west to  
intersection of county line  
with section line, for mon-  
ument at N<sup>o</sup> 13, and took  
the following witness trees:  
A Beech 18 in diam bears N  
4 $\frac{1}{4}$ ° W. 24 $\frac{1}{2}$  links distant and  
an R. Oak 8 in diam, bears  
S. 48 $\frac{1}{2}$ ° E. 3 $\frac{1}{2}$  links distant.  
Traveled on east to corner  
of sec's 8, 9, 16 & 17 at M.

North in road on line bet  
sec's 8 & 9. N. 1 $\frac{1}{2}$ ° E.

2485

Centre of Bellefontaine - Sidney  
pike bears S 85° W

4020

Struck 2 links west of stone  
at 1/4 corner

6030

Struck 1 link west of 40 acre  
corner

8024

Struck 3 links west of corner stone  
at cor of Sec's 4, 5, 8 & 9. at L.

1979

Went on line bet sec's 5 & 8  
Fell 22 links south of 40 acre  
corner stone set by H. C. Moore  
at county line

3953

Fell 41 links south of 1/4 corner stone  
at 7. Correct course of line  
S 88° W.

Traveled back to county line  
and set post for monument  
2 1/2 links east + 1 1/2 links north  
of stone, at intersection of  
county & section lines at  
No 12. Returned to corner  
of sec's 4, 5, 8 & 9 at L

North in road on line bet  
Sec's 4 & 5 - N 13 1/4° W.

INDEXED ON MAP  
1884 1D-7



40<sup>17</sup>

Struck 1 1/2 links east of 1/4 cor. stone: witnessed by a Lyrus 24 in diam bearing N. 49 1/4° W. 75 1/4 links distant

57<sup>50</sup>

Road running west.

80<sup>34</sup>

Struck 3 links west of stone, cor to Secs 4 + 5 Tp 1. Q. S. E. Secs 32 + 33 Tp 2 Q. S. E. at. K.

Witness a R Oak 26 in diam.

Bears S 81 1/4° W 64 3/4 links distant

A road runs East from this corner.

West on line bet Secs 5 + 32 Tps 1 + 2 Q. S. East. S 88 1/4° W

20<sup>00</sup>

Set temporary post for monument on county line at N° 11

40<sup>24</sup>

Strike 1 1/2 links south of 1/4 corner stone bet Secs 5 + 32 at Q. Returned to County line + moved temporary post for monument 12 links west + 3/4 of a link north to point of inter-section of county + sec lines at N° 11, and took the following witness trees an Ash 20 in. diam. bears

MISSOURI MAP  
S-DI  
1884 10-8

S  $68\frac{3}{4}^{\circ}$  N 156  $\frac{3}{4}$  links distant  
and a Jack Oak 12 in diam  
Leans S.  $45\frac{1}{2}^{\circ}$  E. 42  $\frac{3}{4}$  links distant.  
Traveled east to corner of sec's  
4, 5, 32 + 33 at, N.

North in road on line bet  
sec's 32 + 33.

4047

Centre of  $\frac{1}{4}$  sec line fence  
Geo Hill who was present  
at a previous survey says:  
the corner was opposite the  
centre of this fence.

8068

Full 19 links west of stone,  
corner to sec's 28, 29, 32 + 33. in  
centre of Stewart + Shroyer  
pike at J. where a forked  
Cherry 8 in diam. Leans S  $52\frac{1}{2}^{\circ}$  W  
 $60\frac{1}{2}$  links distant and an  
Elm 24 in. diam. <sup>Leans</sup> N  $30\frac{3}{4}^{\circ}$  N  
 $178\frac{1}{2}$  links distant. Correct bear-  
ing of line N.  $1\frac{1}{4}^{\circ}$  W.

INDEXED ON MAP  
1084 1D-9

West end line in pike bet  
sec's 29 + 32 S.  $88\frac{3}{4}^{\circ}$  W.

2049

Stone in centre of pike on



county line at N<sup>o</sup> 10

25<sup>36</sup>

Supposed location of old county line.

35<sup>35</sup>

Centre of line fence on the south - bet Piper + Lefevre

40<sup>38</sup>

Corner in pike at P.

Returned to corner of Sec's 28, 29, 32 + 33 at J.

North in road on line bet Sec's 28 + 29 -

40<sup>06</sup>

South east corner of Grave yard

80<sup>16</sup>

Strike 39 1/2 links east of corner stone at cor. of sec's 20, 21, 28 + 29 at I in centre of Boundary pike. Bearing of line N 20<sup>o</sup> West on line between Sec's 20 + 29 S 87 3/4<sup>o</sup> W

6.46

West end of fractional Sec 20 in pike on Greenville Treaty Line

West in pike on Greenville Treaty line bet Sec 29. Tp 2. R. 8. E + Sec 36 Tp. 7. S. R. 7 E. Treaty line bears S 80 1/2 west.

INDEXED ON MAP  
1884 15-10

1.79

Corner Stone in pike at east angle of county line and at southwest cor of fractional east half of sec 36 at N<sup>o</sup> 8.

13.83

West ang in county line in pike on treaty line bet sees 29 + 36 at N<sup>o</sup> 9.

Feb 5. 1884

Traveled to corner of sees 31 + 36 at intersection of Greenville Treaty line with Range line bet Ranges 7 + 8 at H

21<sup>19</sup>

North on Range line in road bet sees 31 + 36

Fell 1 link west of corner to sees 25, 30, 31, + 36. at G. Bearing of line N. 1 1/2° W.

40<sup>25</sup>

Continued north in road on Range line bet sees 25 + 30

Struck 3 1/2 links east of 1/4 cor stone

42<sup>65</sup>

Centre of Brandy Wine Creek

60<sup>38</sup>

Struck 12 links east of 40 acre



corner stone

8050

Struck 8 links east of stone corner to sec's 19, 24, 25, & 30, at F. Bearing of line N. 125° W.

Continued north in road on range line bet sec's 24 & 19

2016

40 Acres corner

4023

Centre of Trout & Smith pike running east and west

8050

Struck 7 links east of corner to sec's 13, 18, 19 & 24 at E. Witness an Ash 24 in. diam. North 5 links distant Bearing of line N 1° 25' W

Continued north in road on range line bet sec's 13 & 18.

2003

Centre of road running west

8034

Struck corner stone in Duckworth & Baughman pike in south end of Frank & Pence pike, being corner to sec's 7, 12, 13 & 18 at D.

INDEXED ON MAP  
1904 15-12

Line bears N. 174° W.

Continued North in pike  
on range line between  
Secs 7 + 12

1137

Gordon Baughman's south line

4020

1/4 Sec line

8040

Full 12 links west of stone  
in centre of pike at con.  
to secs 1, 6, 7 + 12. at C. Line  
bears N. 172° W.

Continued North in pike  
on range line bet Secs 1 + 6

2007

Centre of 40 acre line fence

4013

Full 10 links west of corner

6019

Centre of 40 acre line fence

8026

Full 4 links west of corner  
to secs 1, 6, 31 + 36. Tps 6 + 7 S.  
and Ranges 7 + 8 at B.

Bearing of line N. 172° W.

Cont'd north in pike  
on range line bet secs  
31 + 36 N. 172° W.

2012

Centre of 40 acre line fence

INDEXED ON MAP



40<sup>19</sup>

Centre of 1/4 Sec line fence  
Struck 7 links west of cor.  
at A

80<sup>50</sup>

West on line bet sec's  
25 + 36. T<sup>o</sup> 6. South Range 7 east  
S 88 3/4° W

14<sup>50</sup>

Old Co line and South  
east cor. of Auglaizees.

15-16

Line fence bet David  
Shopstall + James Baggs.

35-72

Set temporary 1/4 Sec post  
for Co. lines

Original witness trees at  
this cor. were a Pigeon Oak  
12 in diam. Bearing of 69° W.  
15 links distant + a swamp  
Ash. 8 in diam. Bearing  
of 35° W. 26 links distant  
Both trees gone.

55-66

Struck 26 links south of  
40 acre corner.

A little further on is  
Muckinippi creek which  
is too deep to cross on  
account of freshet now.

Returned to temporary post

at county line & moved  
it  $16\frac{3}{4}$  links north & 47  
links east at No 1 & took  
the following witness trees

A water Beech 4 in diam.  
bearing S  $66^{\circ}$  W 78 links distant  
and a swamp Ash 11 in  
diam bearing N  $70\frac{1}{2}^{\circ}$  W. 78  
links distant

South on county line  
through sec. 36.

20<sup>10</sup>  
40<sup>30</sup>  
52<sup>00</sup>  
60<sup>41</sup>  
80<sup>44</sup>

Line fence crosses.  
Line fence crosses.  
Line fence running west.  
Line fence running east.  
Boulder, corner stone at  
No 2.  $\frac{1}{4}$  sec cor bet Sec. 36  
T. 6. S. R. 7 E. and sec 1. T. 7. S.  
R. 7 E. Stone was set by  
Jonathan Counts on east  
and west road. Witness  
trees gone.

Bearing of line S  $1^{\circ} 23'$  E.

Continued south on county

INDEXED ONLY  
1884 P-15



line through Sec 1.

2011

40 acre cor. stone.

40<sup>RR</sup>

$\frac{1}{4}$  sec. line fence crosses

60<sup>33</sup>

40 acre corner stone.

8046

Small Bolder in east & west road possibly intended for  $\frac{1}{4}$  cor. bet Secs 1 & 12 at N<sup>o</sup> 3. Now the original witness trees are also gone.

Traveled west to corner of Secs 1, 2, 11 & 12 corner stone at C.

East in road on line bet Secs 1 & 12

40<sup>RR</sup>

Strike 2. Links south of stone at county line.

75<sup>78</sup>

Corner to sec's 1, 6, 7 & 12. at C.

The original field notes

length of line. is west

half 4000 chains & east half

35.18 chs. & north length 75.18 chs.

The excess of 20 links is divided proportional to the lengths of the east & west

halves of the line

This fixes the county line 40.32 chains east of the west line & 35.46 chains west of the east line of the section. Returned

to county line and planted fowlder at 1/4 corner on Co. line. 2 links north & 4 links east of stone already there at No 3. Bearing of line S. 1° 29' E. July 18. 1884.

Continued south on county line through sec. 12.

1/4 Sec line.

Line runs west.

Line running east.

Centre of Stephenson pike at No 4. No corner marked & witness trees gone. Set

temporary posts on north & south sides of pike, each 17 links from centre. Travelled west to cor. of Secs 11. 12 13 & 14 at D.

40.20

54.65

69.03

80.40

INDEXED ON MAP  
1884 10-17



4038

East on line bet secs 12 & 13  
Intersect temporary posts at  
county line on Stephenson  
pike at No 4.

75-59

Corner of secs 7.12.13 & 18 at D.  
The original field notes  
give the east half of the line  
35.21 chains & the west half  
40 chains, whole length 75.21  
chains. The excess of 38 links  
is divided proportionally bet  
the east & west halves of the  
line. Placing the county  
line 40.20 chas east of the  
west line & 35.39 west of  
the east line. Returned  
to co. line & moved posts  
38 links west to true point  
of intersection at No 4. Bear-  
ing of line S. 1° 33' E.

Continued South on Co. line  
through sec 13 S. 1° 8' E.

2042

2200

4025

Line running east-  
Line running west.  
Supposed 1/4 sec line

INDEXED ON MAP  
1004 1D-10

6033

Centre of road running east & west

8025

Strike 1/4 corner post bet  
secs 13 & 24, on county line  
at point for monument at No 5

Cont'd south on co. line  
through sec 24.

4025

Centre of road running east & west

6025

40 acre line.

8025

Strike 1/4 cor post bet secs 24 & 25  
on co line at point for mon-  
ument at No 6 Bearing of line  
S. 1° E

Continued south on county  
line through sec 25.

2007

40 acre line running east

4020

Strike 1/4 corner stone in centre of sec.

3720

Line running west

8045

Strike 1/4 cor stone bet secs 25 & 36  
at point for monument at  
No 7. Bearing of line S. 1° E.

Continued south on county  
line through sec 36. Run



1030 / Creek crosses.

1033- Line runs east.

2665- Strike stone in pile on Greenville Treaty line at No. 8. Bearing of line S 1 1/2° E

All the courses given are at the magnetic bearing.

Feb 9<sup>th</sup> 1884.

The line is marked by sand stone monuments four feet long & twelve inches sq. The tops are dressed pyramidal with the apex 6 in. high, and the four sides are dressed smooth twelve inches down, making each face 1 ft. sq. The other part thirty in. is left rough & buried in the ground. The monuments are invariably planted on the County line and at the inter-sections of the county line

INDEXED ON MAP  
1884 1D-20

with the section lines except where there is a road on section line & at the south end at the river where they are planted twenty five feet either north or south of the section lines.

All the monuments except the one at the north end of the county line, were set by & in the presence of J. A. Buchanan County Suror of Logan Co W. H. Pampel, Dep. Co. Suror. Shelby Co E Cantwell derrick Boss & Kellis Johnson and Jas Stewart helpers, last two named named men are colored July 15<sup>th</sup> 84

Set monument N<sup>o</sup> 15-20 feet north of average waters edge of Great Miami River and 15 feet north of stone on line bet lands of J A Pool & B F Allbaugh The monument

has the following inscriptions on the four sides North side S. 20. T. 1. R. 8.

South side 1884. East side I. West side S

Set monument No 14 on county line 25 feet north of line between Sec's 17 & 20 T. 1. R. 8. E. with the following inscriptions North side S. 17. T. 1. R. 8. South side S. 20. 1884 E side I. West side S.

July 16<sup>th</sup> 1884 Set monument No 13 at intersection of County line with line bet Secs 8 & 17. Inscriptions North side S. 8. T. 1. R. 8. South side S. 17. 1884 E side I. West side S

Monument No 12 Set at intersection of county line with line bet sec's 5 & 8 Inscribed as follows North side S. 5. T. 1. R. 8. South side S. 8. 1884. E side I. & West side S.

Set monument No 11 at intersection of Co. line.

INDEXED ON MAP



with township line between  
secs 5 + 32 Tps 1 + 2. Descrip-  
tions. North side S. 32. T. 2. R. 8. ✓

South side S. 5. T. 1. R. 8. 1884

East side I. West side S.

Set monument No 10  
on county line 25 feet  
north of line between  
secs 29 + 32 on Stewart pike  
Descriptions North side

S. 29. T. 2. R. 8. South side S. 32 1884

East side I. West side S.

There is also a boulder at  
the corner in pike.

July 17. 1884.

Set monument No 9 on  
county line 20 feet south  
of Greenville Treaty line. Des.

North. side S. 36. T. 7. R. 7. South  
side S. 29. T. 2. R. 8. 1884 E side I

W. side S.

Set monument No 8  
on county line 20 feet north  
of Greenville Treaty line bet  
secs 29 Tps 2 R 8 + Sec 36 Tps 7 S. R. 7. E.

Descriptions North side

INDEXED ON MAP  
1884 1D-23

S 36. T. 7. R. 7. South side S 29. T. 2. R. 8. <sup>1884</sup>  
East side L. west side S

There is also a boulder at the corner in pike.

At No 7 the corner stone already set was removed & monument set in its place at intersection of Co line with line bet secs 25 & 36. Description North side S 25. T. 7. R. 7 South side S. 36. 1884. East side L. west side S.

Monument No 6 was set at the intersection of the Co. line with the line bet secs 24 & 25. Description as follows:- North side S. 24. T. 7. R. 7. South side S. 25. 1884. East side L. west side S.

Monument No 5 was set at the intersection of the county line with the line between Sec's 13 & 24. Description North side S. 13. T. 7. R. 7. South side S. 24. 1884. East side L. West side S

Set monument No 4 on Co. line 25 feet north of line bet secs 12 - 13. Descriptions as follows, to wit: - on the north side S12 T7 R7 on the south side S 13 1884. On the east side L. & on the west side S.

July 1884 Set monument No 3 on Co. line 25 feet north of of line bet secs 1 + 12. Des. as follows. north side S. 1. T. 7. R. 7. South side S 12. 1884. E. side L. & west side S. Stone at corner

Set monument No 2 on Co. line 25 feet south of Tp. line between secs 1. T7 S R7 E & Sec. 36. T. 6. S. R. 7. E. with inscriptions as follows. On north side S. 36. T. 6. R. 7. On south side S 1. T. 7. R. 7. 1884. on east side L. and on west side S. Stone.

Adjourned to meet hereafter with the co. suor. of Auglaize Co or his rep.

INDEXED ON MAP  
1884 1D-25



representative to set the  
monument at the north  
end of the twenty line  
between Shelby & Logan less  
on the south line of Auglaize

Aug 25<sup>th</sup> 1884

By a previous appointment  
Samil Craig surveyor appoint  
ed by Auglaize les. met  
this day with A. H. Bushan-  
an & W. W. Pampel to set  
monument bet Auglaize  
Logan & Shelby les. W. F.  
Craig son of Samil Craig  
was also present

A careful search was  
made to discover if pos-  
sible remains of the  
original witness trees, no  
traces being visable above  
ground, except a slight  
unevenness of the ground  
which was examined &  
found to contain a hole  
lined with oak bark.  
The tap root having

INDEXED ON MAP

entirely disappeared. From this the course & distance was measured, to where the corner should be at the post & from this point the course & distance was also measured to where the Ash should have stood & the ground dug open showed remains of ash roots. This was regarded sufficient evidence to locate the corner & monument. In making the excavation for the monument we were rewarded with additional evidence and positive proof of the corner at this place by finding the points of two old posts, one having the appearance of being thirty or forty years old & the other one half that age a hole in which the original corner post evidently stood was plain to be

seen also. all of these marks were about 18 in below the surface of the ground & within an area of one square foot

Set monument No 1 at intersection of Co. line. Set Logan & Shelby & sec. line & county line, set Secs 25 & 36 T. 6. S. R. 7. E. Set Anglaize Logan & Shelby. Inscription on north side Anglaize S. 25. T. 6. R. 7. On south side County line S. 36. 1884 On East side Logan & on west side Shelby.

Dec 19-84 ~~S. W. Curry~~ Dep. Co Surv. Shelby Co. O.

Dec 19-84 S. A. Buchanan Co Surv. Logan Co. O.

Co. Surv. Shelby Co



# COST BILL

For Survey of Line between -

— LOGAN & SHELBY CO'S. —

	J. C. Wonders, Chairman	10d	20	00	
	Chiff Cookston	" 10d	20	00	
	C. H. Buchanan Flag	10d	20	00	
	Everett Johnston	" 4d	8	00	
	C. C. Cookston	" 6d	12	00	
	Os Marquis Ax	10d	20	00	
	Kellis Jackson Teamster				
	deliv & setting monuments		28	80	
	Jas Stewart, laborer, do.		8	00	
	E. Cantwell Derrick boss do		22	00	
	Same use of derrick		3	00	
	Cantwell & Stillwell Monuments		120	00	
	Auditor state. Cop. orig. field notes		6	10	288 10
Dec 27, 1883	S. A. Buchannan Survey				
to Jan 28, 1884	Making preliminary plats & records		50	75	
Jan 5	Trip to Sidney with Logan Co Aud		4	30	
Jan. 16 to 19	Surveying		20	00	
" 22 to 23	Plating field notes Office		8	00	
" 24 to 31	" " " " "		24	00	
Feb 4 to 9	Surveying		30	00	
" 11 to 12	Office work self and asst.		13	00	
" 13	" " " " "		2	50	
" 21 to 22	Field work locating buildings		10	00	
" 27 to Mar 6	Maps & Schedule Auditor		37	50	
Mar 23 to 25	Schedule for Shelby Co Audt		11	00	
			211	05	288 10

INDEXED ON MAP  
1884 ID-29

	Ant. Prot. Ford.	211	05	288	10
July 15 <sup>th</sup> 19	Setting monuments	23	00		
Aug 2 <sup>nd</sup> -	"	5	00		
Dec 1 <sup>st</sup> 19	Making plat & copying field notes	17	80		
	Making & Copying report.	15	00	271	80
	D.W. Pampel Surveyor				
Feb	Surveying	30	00		
4.5.6.7.8.9	Surveying				
15.16.18.19.20	Copying records	25	00		
21.22	Locating buildings &c	10	00		
24.25.26.27.28	Making plats & duplicate descrip's	25	00		
March 5	Went to Bellef to compare notes	5	00		
18.19.20.21.22	Making plats & duplicate descrip's	25	00		
23.24	Making plats & specific. for monuments	10	00		
25.26	Making plats & duplicate descrip's	10	00		
28.31	Making duplicate of land to transfer to Logans lco	10	00		
July	Setting monuments	20	00		
15.16.17.18	"	5	00		
Aug 2 <sup>nd</sup> -	"				
Oct. 10.11.12.18.19.24	Making report	30	00		
Nov 12.13.14.15.17.18.19	Making report & copy	35	00	240	00
	Total cost of work.			799	95

The above counties are each to pay one half the entire expense of survey

Amount already paid by Logans Co 488 15

Amount ~~not~~ paid by Logans lco 88 17 1/2

Amount due from Shelby lco 399 97 1/2

799 95

INDEXED ON MAP  
1004 10-30



The above bills allowed and  
approved by

R. P. Lukens

J. M. Putnam

Commissioners  
of  
Logan County.

John Linker

John E. Bush

Commissioners  
of  
Shelby County.



line through Sec 1.

2011

40 acre cor. stone.

40<sup>RR</sup>

1/4 sec. line fence crosses

60<sup>33</sup>

40 acre corner stone.

80<sup>46</sup>

Small Bolder in east & west road possibly intended for 1/4 cor. bet Secs 1 & 12 at N° 3. Now the original witness trees are also gone.

Traveled west to corner of Secs 1, 2, 11 & 12 corner stone at C.

East in road on line bet Secs 1 & 12

40<sup>28</sup>

Strike 2. Links south of stone at county line.

75<sup>78</sup>

Corner to sec's 1, 6, 7 & 12. at C.

The original field notes length of line. is west half 4000 chains & east half 35.18 chs. which length 75.18 chs. The excess of 20 links is divided proportional to the lengths of the east & west

91-D-4891  
1884-10-16

halves of the line

This fixes the county line 40.32 chains east of the west line & 35.46 chains west of the east line of the section. Returned

to county line and planted fowlder at 1/4 corner on Co. line. 2 links north & 4 links east of stone already there at No 3. Bearing of line S. 1° 29' E. July 18. 1884.

Continued south on county line through sec. 12.

1/4 Sec line.

Line runs west.

Line running east.

Centre of Stephenson pike at No 4. No corner marked & witness trees gone. Set

temporary posts on north & south sides of pike, each 17 links from centre. Travelled west to cor. of Secs 11. 12 13 & 14 at D.

40.20  
54.65  
69.03  
80.40

INDEXED ON MAP  
1884 10-17

4038

East on line bet secs 12 & 13  
Intersect temporary posts at  
county line on Stephenson  
pike at N. 4.

75-59

Corner of secs 7.12.13 & 18 at D.  
The original field notes  
give the east half of the line  
35.21 chains & the west half  
40 chains, whole length 75.21  
chains. The excess of 38 links  
is divided proportionally bet  
the east & west halves of the  
line. Placing the county  
line 40.20 chas east of the  
west line & 35.39 west of  
the east line. Returned  
to co. line & moved posts  
38 links west to true point  
of intersection at N. 4. Bear-  
ing of line S. 1° 33' E.

Continued South on Co. line  
through sec 13 S. 1° 8' E.

2042

2200

4025

Line running east-  
Line running west.  
Supposed 1/4 sec line

INDEXED ON MAP  
1004 1D-10



6033

Centre of road running east & west

8025

Strike  $\frac{1}{4}$  corner post bet  
secs 13 & 24, on county line  
at point for monument at No 5

Cont'd south on co. line  
through sec 24.

4025

Centre of road running east & west

6025

40 acre line.

8025

Strike  $\frac{1}{4}$  cor post bet secs 24 & 25  
on co line at point for mon-  
ument at No 6 Bearing of line  
S. 1° E

Continued south on county  
line through sec 25.

2007

40 acre line running east

4020

Strike  $\frac{1}{4}$  corner stone in centre of sec.

3720

Line running west

8045

Strike  $\frac{1}{4}$  cor stone bet secs 25 & 36  
at point for monument at  
No 7. Bearing of line S. 1° E.

Continued south on county  
line through sec 36. Run

1030 / Creek crosses.

1033- Line runs east.

2665- Strike stone in pile on Greenville Treaty line at No. 8. Bearing of line S 1 1/2° E

All the courses given are at the magnetic bearing.

Feb 9 1884.

The line is marked by sand stone monuments four feet long & twelve inches sq. The tops are dressed pyramidal with the apex 6 in. high, and the four sides are dressed smooth twelve inches down, making each face 1 ft. sq. The other part thirty in. is left rough & buried in the ground. The monuments are invariably planted on the County line and at the inter-sections of the county line

INDEXED ON MAP  
1884 1D-20

with the section lines  
except where there is a  
road on section line &  
at the south end at the  
river where they are  
planted twenty five feet either  
north or south of the  
section lines.

All the monum-  
ents except the one at the  
north end of the county  
line, were set by & in  
the presence of J. A. Buch-  
anan County Suror of Logan  
Co W. W. Pampel, Dep. Co.  
Suror. Shelby Co E Cantwell  
derrick Boss & Kellis Johnson  
and Jas Stewart helpers, last  
two named named men  
are colored July 15<sup>th</sup> 84

Set monument N<sup>o</sup> 15-20  
feet north of average waters  
edge of Great Miami River  
and 15 feet north of stone  
on line bit lands of J A Pool  
& B F Allbaugh The monument



has the following inscriptions on the four sides North side S. 20. T. 1. R. 8.

South side 1884. East side I. West side S

Set monument No 14 on county line 25 feet north of line between Sec's 17 & 20 T. 1. R. 8. E. with the following inscriptions North side S. 17. T. 1. R. 8. South side S. 20. 1884 E side I. West side S.

July 16<sup>th</sup> 1884 Set monument No 13 at intersection of County line with line bet Secs 8 & 17. Inscriptions North side S. 8. T. 1. R. 8. South side S. 17. 1884 E side I. West side S

Monument No 12 Set at intersection of county line with line bet sec's 5 & 8 Inscribed as follows North side S. 5. T. 1. R. 8. South side S. 8. 1884. E side I. & West side S.

Set monument No 11 at intersection of Co. line.

INDEXED ON MAP

with township line between  
secs 5 + 32 Tps 1 + 2. Descrip-  
tions. North side S. 32. T. 2. R. 8. ✓

South side S. 5. T. 1. R. 8. 1884

East side I. West side S.

Set monument No 10  
on county line 25 feet  
north of line between  
secs 29 + 32 on Stewart pike  
Descriptions North side

S. 29. T. 2. R. 8. South side S. 32 1884

East side I. West side S.

There is also a bowlder at  
the corner in pike.

July 17. 1884.

Set monument No 9 on  
county line 20 feet south  
of Greenville Treaty line. Des.

North. side S. 36. T. 7. R. 7. South  
side S. 29. T. 2. R. 8. 1884 E side I

W. side S.

Set monument No 8  
on county line 20 feet north  
of Greenville Treaty line bet  
secs 29 Tps 2 R 8 + Sec 36 Tps 7 S. R. 7. E.

Descriptions North side

INDEXED ON MAP  
1884 1D-23

S 36. T. 7. R. 7. South side S 29. T. 2. R. 8. <sup>1884</sup>  
East side L. west side S.

There is also a boulder at the corner in pile.

At No 7 the corner stone already set was removed & monument set in its place at intersection of Co line with line bet secs 25 & 36. Inscription North side S 25. T. 7. R. 7 South side S. 36. 1884. East side L. west side S.

Monument No 6 was set at the intersection of the Co. line with the line bet secs 24 & 25. Inscription as follows:- North side S. 24. T. 7. R. 7. South side S. 25. 1884. East side L. west side S.

Monument No 5 was set at the intersection of the county line with the line between Sec's 13 & 24. Inscription North side S. 13. T. 7. R. 7. South side S. 24. 1884. East side L. West side S.



Set monument No 4 on Co. line 25 feet north of line bet secs 12 - 13. Descriptions as follows, to wit: - on the north side S12 T7 R7 on the south side S 13 1884. On the east side L. & on the west side S.

July 1884 Set monument No 3 on Co. line 25 feet north of of line bet secs 1 + 12. Des. as follows. north side S. 1. T. 7. R. 7. South side S 12. 1884. E. side L. & west side S. Stone at corner

Set monument No 2 on Co. line 25 feet south of Tp. line between secs 1. T7 S R7 E & Sec. 36. T. 6. S. R. 7. E. with inscriptions as follows. On north side S. 36. T. 6. R. 7. On south side S 1. T. 7. R. 7. 1884. on east side L. and on west side S. Stone.

Adjourned to meet hereafter with the co. surd. of Auglaize Co or his rep.

INDEXED ON MAP  
1884 1D-25

representative to set the  
monument at the north  
end of the twenty line  
between Shelby & Logan less  
on the south line of Auglaize

Aug 25<sup>th</sup> 1884

By a previous appointment  
Samil Craig surveyor appoint  
ed by Auglaize less met  
this day with A. H. Bushan-  
an & W. W. Pampel to set  
monument bet Auglaize  
Logan & Shelby less. W. F.  
Craig son of Samil Craig  
was also present

A careful search was  
made to discover if pos-  
sible remains of the  
original witness trees, no  
traces being visible above  
ground, except a slight  
unevenness of the ground  
which was examined &  
found to contain a hole  
lined with oak bark.  
The tap root having

INDEXED ON MAP

entirely disappeared. From this the course & distance was measured, to where the corner should be at the post & from this point the course & distance was also measured to where the Ash should have stood & the ground dug open showed remains of ash roots. This was regarded sufficient evidence to locate the corner & monument. In making the excavation for the monument we were rewarded with additional evidence and positive proof of the corner at this place by finding the points of two old posts, one having the appearance of being thirty or forty years old & the other one half that age a hole in which the original corner post evidently stood was plain to be



seen also. all of these  
marks were about 18 in  
below the surface of the  
ground & within an area  
of one square foot

Set monument No 1  
at intersection of Co. line.  
Set Logan & Shelby & sec. line  
& county line, set Secs 25 & 36  
T. 6. S. R. 7. E. Set Anglaize Logan  
& Shelby. Inscription on  
North side Anglaize S. 25. T. 6. R. 7.  
On South side County line  
S. 36. 1884 On East side Logan &  
on west side Shelby.

Dec 19-84 ~~S. W. P. Currier~~ Dep. Co Surv. Shelby Co. O.

Dec 19-84 S. A. Buchanan Co Surv. Logan Co. O.

Co. Surv. Shelby Co

# COST BILL

For Survey of Line between -

— LOGAN & SHELBY CO'S. —

	J. C. Wonders, Chairman	10d	20	00	
	Chiff Cookston	" 10d	20	00	
	C. H. Buchanan Flag	10d	20	00	
	Everett Johnston	" 4d	8	00	
	C. C. Cookston	" 6d	12	00	
	Os Marquis Ax	10d	20	00	
	Kellis Jackson Teamster				
	deliv & setting monuments		28	80	
	Jas Stewart, laborer, do.		8	00	
	E. Cantwell Derrick boss do		22	00	
	Same use of derrick		3	00	
	Cantwell & Stillwell Monuments		120	00	
	Auditor state. Cop. orig. field notes.		6	10	288 10
Dec 27, 1883.	S. A. Buchannan Survey				
to Jan 28, 1884	Making preliminary plats & records		50	75	
Jan 5	Trip to Sidney with Logan Co Aud		4	30	
Jan. 16 to 19	Surveying		20	00	
" 22 to 23	Plating field notes Office		8	00	
" 24 to 31	" " " " "		24	00	
Feb 4 to 9	Surveying		30	00	
" 11 to 12	Office work self and asst.		13	00	
" 13	" " " " "		2	50	
" 21 to 22	Field work locating buildings		10	00	
" 27 to Mar 6.	Maps & Schedule Auditor		37	50	
Mar 23 to 25	Schedule for Shelby Co Audt		11	00	
			211	05	288 10

INDEXED ON MAP  
1884 ID-29



	Ant. Prot. Ford.	211	05	288	10
July 15 <sup>th</sup> 19	Setting monuments	23	00		
Aug 25-	"	5	00		
Dec 1 <sup>st</sup> 19	Making plat & copying field notes	17	80		
	Making & Copying report.	15	00	271	80
	D.W. Pampel Surveyor				
Feb 4. 5. 6. 7. 8. 9	Surveying	30	00		
15. 16. 18. 19. 20	Copying records	25	00		
21. 22	Locating buildings &c	10	00		
24. 25. 26. 27. 28	Making plats & duplicate descrip's	25	00		
March 5	Went to Bellef to compare notes	5	00		
18. 19. 20. 21. 22	Making plats & duplicate descrip's	25	00		
23. 24	Making plats & specific. for monuments	10	00		
25. 26	Making plats & duplicate descrip's	10	00		
28. 31	Making duplicate of land to transfer to Logans lco	10	00		
July 15. 16. 17. 18	Setting monuments	20	00		
Aug 25-	" "	5	00		
Oct. 10. 11. 16. 18. 19. 24	Making report	30	00		
Nov 12. 13. 14. 15. 17. 18. 19	Making report & copy	35	00	240	00
	Total cost of work.			799	95

The above counties are each to pay one half the entire expense of survey

Amount already paid by Logans Co 488 15

Amount ~~not~~ paid by Logans lco 88 17 1/2

Amount due from Shelby lco 399 97 1/2

799 95

INDEXED ON MAP  
1004 10-30



The above bills allowed and  
approved by

R. P. Lukens

J. M. Putnam

Commissioners  
of  
Logan County.

John Linker

John E. Bush

Commissioners  
of  
Shelby County.