

Permanent Sanitary Sewer Easement

**Part of Lot No. 368
Village of Russells Point
Section 36, T. 6 S., R. 8 E.
Washington Township
Logan County, Ohio
September 2005**

The following described permanent sanitary sewer easement is situated in the Village of Russells Point, Section 36, T. 6 S., R. 8 E., Washington Township, Logan County, Ohio. Said easement being part of Lot No. 368 of foresaid village which is presently in the name of The Village of Russells Point, Logan County, Ohio (O.R. Vol. 76, Pg. 274). Said easement being an eight foot wide strip four feet each side of the following described line.

Beginning for reference at a 5/8" diameter capped rebar set at the intersection of the centerline of Navaho Street with the South line of Sunnyside Avenue.

Thence with the South line of Sunnyside Avenue and the North line of Lot No. 369 and part of Lot No. 368, N. 89° - 49' - 24" W., 70.00 feet to a point. Said point being the true point of beginning for this centerline easement description.

Thence onto Lot No. 368, S. 6° - 31' - 51" W., 76.66 feet to the center of a manhole.

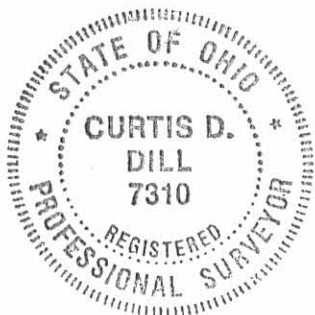
Thence S. 27° - 54' - 04" E., 26.99 feet to the South line of Lot No. 368 and there terminate.

The above described permanent sanitary sewer easement encompasses 829 square feet or 0.019 acre more or less.

Basis of bearing being the centerline of the old T. & O.C. railroad (N. 11° - 02' - 48" W.) from station 1579 + 66.7 to station 1617 + 04.98 (R.R. plan R-48) as shown on a 1983 Geeslin Survey of 13.92 acres (Index No. 6909).

Caps placed on rebars set are stamped "Logan County Engineer".

This description of a permanent sanitary sewer easement was prepared by the Logan County Engineer's Office from an actual field survey performed on September 27, 2005.



Curtis D. Dill
Curtis D. Dill
Deputy Surveyor
Logan County Engineers Office
Registered Surveyor No. 7310

INDEXED ON MAP
9526 1D

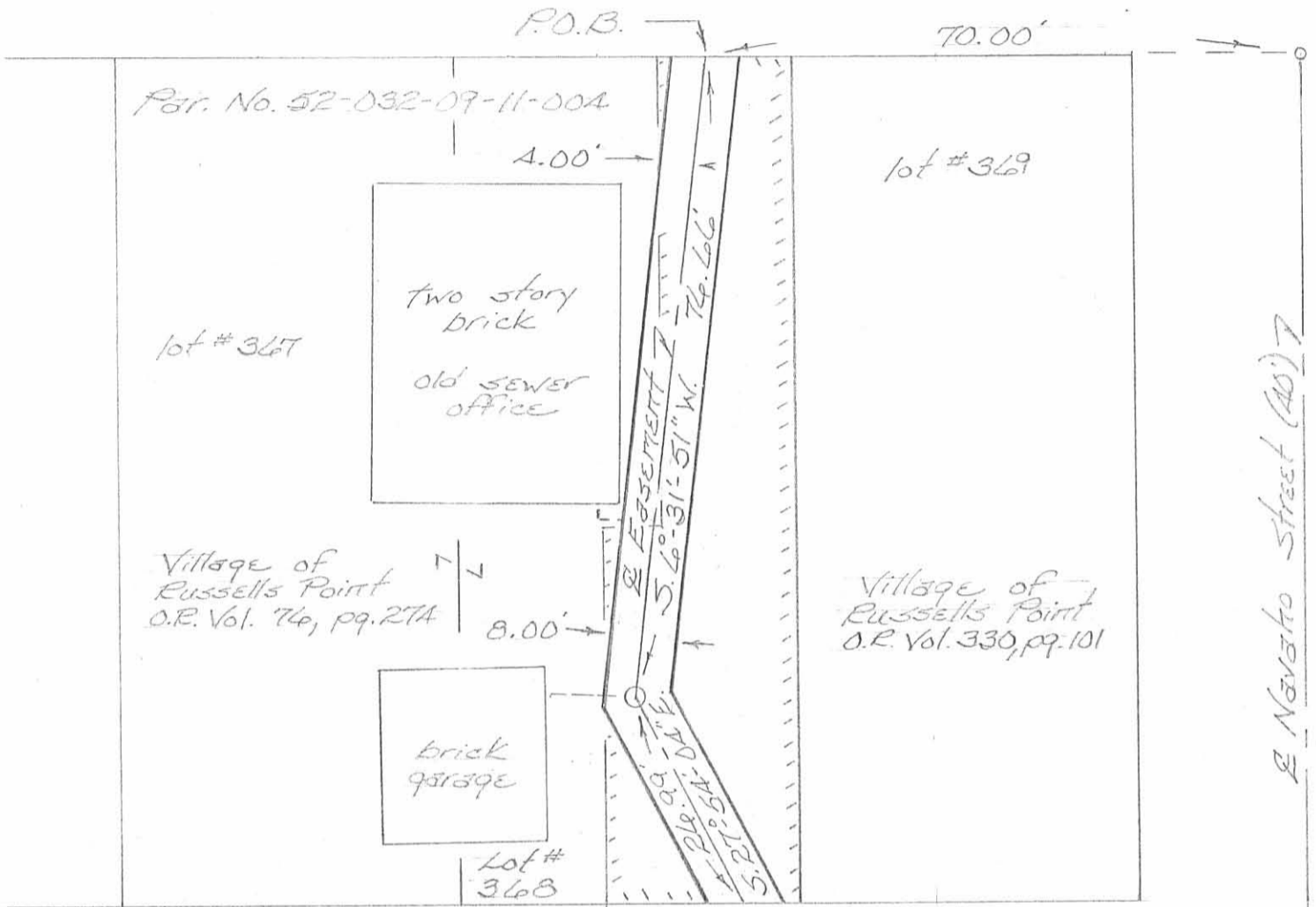
Permanent Sanitary Sewer Easement

Part of lot no. 348
 Village of Russells Point
 Section 36, T. 4 S., R. 8 E.
 Washington Township
 Logan County, Ohio
 September 2005



E Sunnyside Avenue (35')

N. 89° 49' 21" W.



Dove Alley (15')



Easement Area = 0.019 Ac.

Scale: 1" = 20'

Legend

○ = 4 1/2" dia. capped rebar set
 ○ = Manhole

▭ = Existing easement area to be vacated

Caps placed on rebar set are stamped "Logan Co. Engineer".

Basis of bearing being the centerline of the old T. & O. C. railroad (N. 11° 02' 48" W.) from station 1579+66.7 to station 1617+04.98 (R.R. plan R-48) as shown on a 1983 Geeslin Survey of 13.92 acres (Index No. 6909).

This description of a permanent sanitary sewer easement was prepared by the Logan County Engineers Office from an actual field survey performed on September 27, 2005.



INDEXED ON MAP
 9526 IP

Curtis D. Dill

Curtis D. Dill
 Deputy Surveyor
 Logan Co. Engineers Office
 Reg. Surveyor No. 7310