

REC'D 9-20-07 JMY dkv

Lee Surveying and Mapping Co., Inc.

Land Surveys • Topography • Subdivisions • Construction Layout

117 N. Madriver St.
Bellefontaine OH 43311



Phone: (937) 593-7335
Fax: (937) 593-7444

INDIAN LAKE HARBOURSIDE LIMITED PARTNERSHIP 1.181 ACRES

Lying in the Village of Russells Point, Section 36, Town 6, Range 8, Washington Township, Logan County, Ohio.

Being out of the remainder of the Indian Lake Harbourside Limited Partnership, an Ohio Limited Partnership, original 7.424 acre tract as deeded in Official Record 23, Page 93, and all of the remainder of the original 0.211 acre tract as deeded in Official Record 290, Page 240 of the Logan County Records of Deeds and being more particularly described as follows:

Beginning at a drill hole in concrete found on the west right-of-way of Chase Avenue (20 feet wide) on the northeast corner of the Harbourside on the Lagoon Condominiums, (Plat Cabinet B, Slide 30A).

THENCE, with the lines of the Harbourside on the Lagoon Condominiums, the following six courses:

N 48°-29'-47" W, a distance of 227.93 feet to a drill hole found in concrete.

S 41°-30'-17" W, a distance of 32.27 feet to a MAG nail set in concrete.

N 48°-30'-18" W, a distance of 43.73 feet to a 5/8 inch iron rod found.

S 41°-30'-13" W, a distance of 40.46 feet to a point in water.

S 23°-39'-34" W, a distance of 168.69 feet to a 5/8 inch iron rod found.

N 56°-20'-26" W, a distance of 165.39 feet to a chiseled "X" in concrete set on the sea wall, passing a 5/8 inch iron rod found at 161.08 feet.

THENCE, with the face of the concrete seawall, N 10°-09'-38" E, a distance of 53.37 feet to a chiseled "X" in concrete set on the sea wall.

THENCE, N 25°-30'-13" E, a distance of 55.01 feet to a 5/8 inch iron rod set.

THENCE, N 29°-42'-13" E, a distance of 87.70 feet to a 5/8 inch iron rod set.

THENCE, with the lines of the American Society of Ephesus, Inc. an Ohio Non-Profit Corporation 0.234 acre tract, (O.R. 290, Pg. 243), the following four courses:

S 61°-43'-13" E, a distance of 74.01 feet to a 5/8 inch iron rod found.

N 39°-50'-57" E, a distance of 91.88 feet to a 5/8 inch iron rod found.

S 50°-36'-38" E, a distance of 46.44 feet to a 5/8 inch iron rod found.

N 19°-26'-50" E, a distance of 7.36 feet to a 5/8 inch iron rod found.

THENCE, with the southwesterly lines of the Roderick J. Clark 0.552 acre tract, (O.R. 347, Pg. 339), the following two (2) courses:

S 50°-27'-37" E, a distance of 101.10 feet to a 5/8 inch iron rod found.

S 50°-40'-47" E, a distance of 2.98 feet to a 5/8 inch iron rod found.

THENCE, with the lines of the Point Harbor Inc., an Ohio Corporation, original 2.94 acre tract, (O.R. 347, Pg. 341), the following two (2) courses:

9190 1D-1

Lee Surveying and Mapping Co., Inc.

Land Surveys • Topography • Subdivisions • Construction Layout

117 N. Madriver St.
Bellefontaine OH 43311



Phone: (937) 593-7335
Fax: (937) 593-7444

S 42°-15'-47" W, a distance of 29.20 feet to a 5/8 inch iron rod found.

S 48°-27'-54" E, a distance of 221.59 feet to a 5/8 inch iron rod found.

THENCE, with the west right-of-way of Chase Avenue, S 23°-44'-07" W, a distance of 20.99 feet to the point of beginning.

Containing 1.181 acres.

The basis for bearings is the northeasterly line of Harbourside on the Lagoon Condominiums, being N 48°-29'-47" W, and all other bearings are from angles and distances measured in a field survey by Lee Surveying and Mapping Co., Inc. on January 4, 2000.

Description prepared by:

A handwritten signature in black ink, appearing to read 'J. Lee', is written over a circular professional seal.

Jeffrey I. Lee
Professional Surveyor 6359
January 10, 2000



ORIGINAL STAMP IN GREEN L-1134

REC'D 9-21-00 SMY OK ✓

Lee Surveying and Mapping Co., Inc.

Land Surveys • Topography • Subdivisions • Construction Layout

117 N. Madriver St.
Bellefontaine OH 43311



Phone: (937) 593-7335
Fax: (937) 593-7444

STATE OF OHIO INDIAN LAKE LAKELANDS 0.016 ACRE

Lying in the Village of Russells Point, Section 36, Town 6, Range 8, Washington Township, Logan County, Ohio.

Being part of the State of Ohio Indian Lake Lakelands and being more particularly described as follows:

Beginning at a 5/8 inch iron rod set on the northwest corner of the remainder of the Indian Lake Harbourside Limited Partnership, an Ohio Limited Partnership, 7.424 acre tract (O.R. 23, Pg. 93) and on the southwest corner of the American Society of Ephesus, Inc., an Ohio Non-Profit Corporation, 0.234 acre tract (O.R. 290, Pg. 243).

THENCE, with the lines of the said 7.424 acre tract, the following two (2) courses:

S 29°-42'-13" W, a distance of 87.70 feet to a 5/8 inch iron rod set.

S 25°-30'-13" W, a distance of 55.01 feet to a chiseled "X" in concrete set in the sea wall.

THENCE, with the concrete sea wall, N 10°-09'-38" E, a distance of 23.67 feet to a MAG nail set.

THENCE, continuing with the concrete sea wall, N 28°-51'-49" E, a distance of 116.03 feet to a 5/8 inch iron rod set.

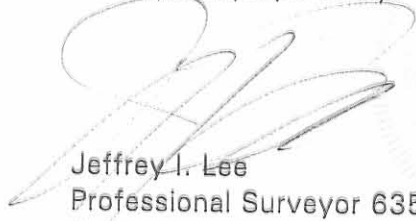
THENCE, continuing with the concrete sea wall, N 20°-08'-02" E, a distance of 4.13 feet to a chiseled "X" in concrete set.

THENCE, with the northeasterly line of the said 7.424 acre tract extended, S 61°-43'-13" E, a distance of 6.28 feet to the point of beginning.

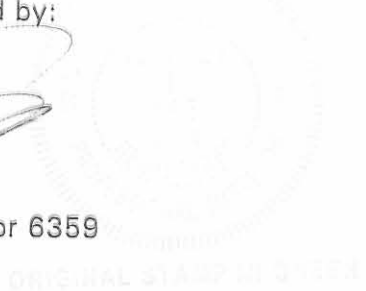
Containing 0.016 acre.

The basis for bearings is the northeasterly line of Harbourside on the Lagoon Condominiums, being N 48°-29'-47" W, and all other bearings are from angles and distances measured in a field survey by Lee Surveying and Mapping Co., Inc. on January 4, 2000.

Description prepared by:


Jeffrey I. Lee
Professional Surveyor 6359

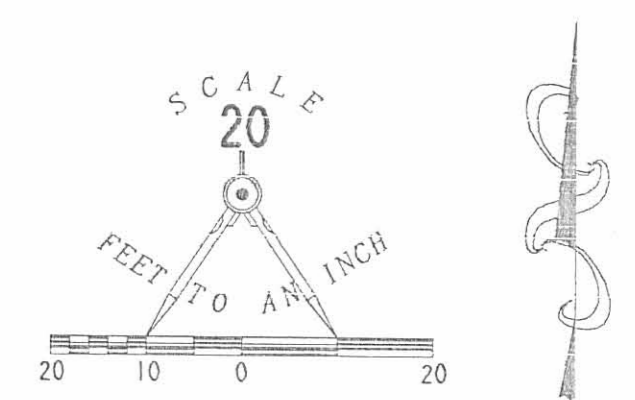
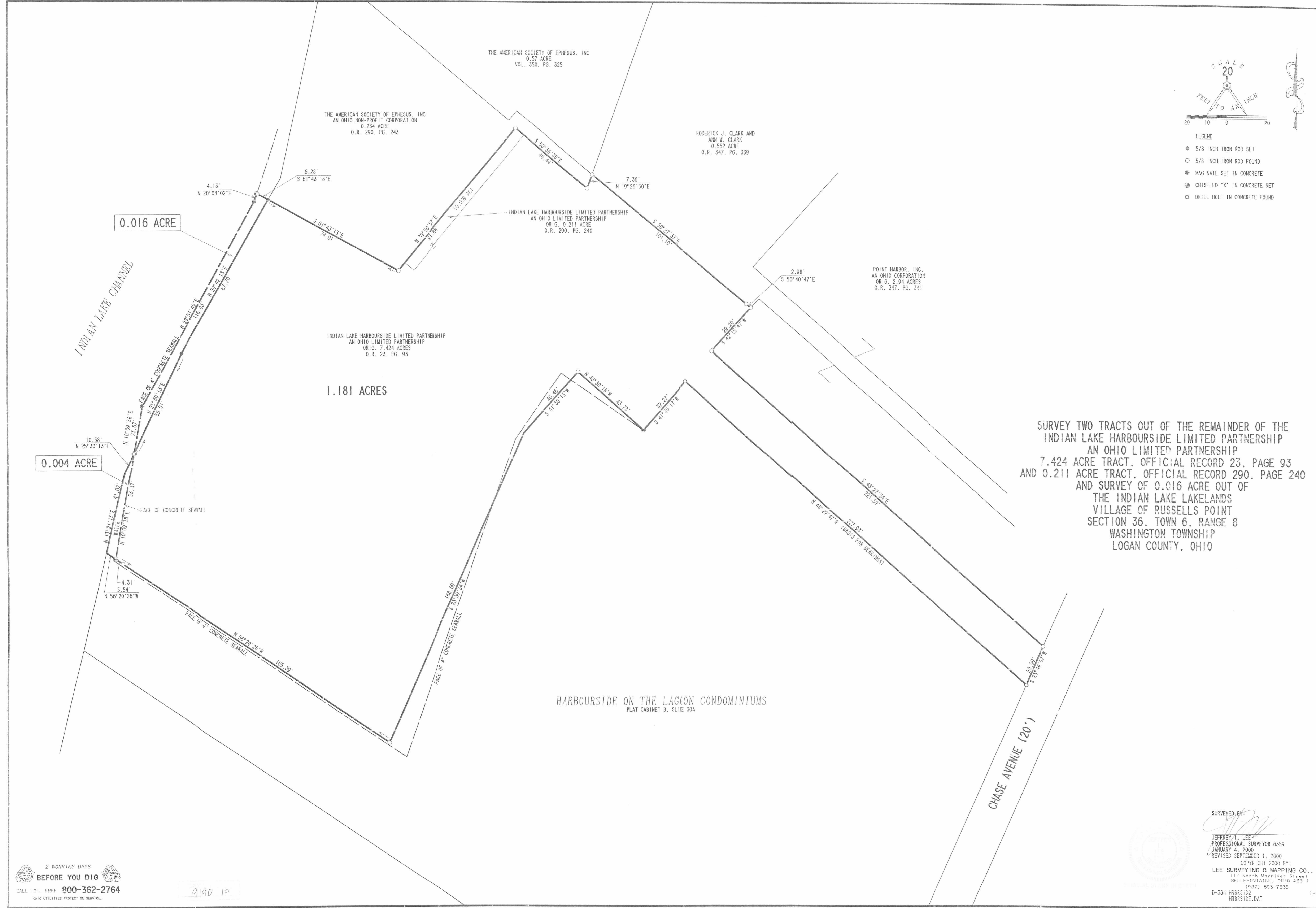
January 10, 2000



L-1134

91901D-3

2007-09-20 00 AM 01/



- LEGEND
- 5/8 INCH IRON ROD SET
 - 5/8 INCH IRON ROD FOUND
 - ⊙ MAG NAIL SET IN CONCRETE
 - ⊕ CHISELED "X" IN CONCRETE SET
 - DRILL HOLE IN CONCRETE FOUND

SURVEY TWO TRACTS OUT OF THE REMAINDER OF THE
 INDIAN LAKE HARBOURSIDE LIMITED PARTNERSHIP
 AN OHIO LIMITED PARTNERSHIP
 7.424 ACRE TRACT, OFFICIAL RECORD 23, PAGE 93
 AND 0.211 ACRE TRACT, OFFICIAL RECORD 290, PAGE 240
 AND SURVEY OF 0.016 ACRE OUT OF
 THE INDIAN LAKE LAKELANDS
 VILLAGE OF RUSSELLS POINT
 SECTION 36, TOWN 6, RANGE 8
 WASHINGTON TOWNSHIP
 LOGAN COUNTY, OHIO

HARBOURSIDE ON THE LAGOON CONDOMINIUMS
 PLAT CABINET B, SL1E 30A

SURVEYED BY:

 JEFFREY T. LEE
 PROFESSIONAL SURVEYOR 6359
 JANUARY 4, 2000
 REVISED SEPTEMBER 1, 2000
 COPYRIGHT 2000 BY:
 LEE SURVEYING & MAPPING CO., INC.
 117 North Madriver Street
 BELLEFONTAINE, OHIO 43311
 (937) 593-7335
 D-384 HRBS102
 HRBSIDE.DAT

2 WORKING DAYS
BEFORE YOU DIG
 CALL TOLL FREE 800-362-2764
 OHIO UTILITIES PROTECTION SERVICE

9190 IP

L-1134-1

REC'D 11-23-01 SMY DL

Lee Surveying and Mapping Co., Inc.

Land Surveys • Topography • Subdivisions • Construction Layout

117 N. Madriver St.
Bellefontaine OH 43311



Phone: (937) 593-7335
Fax: (937) 593-7444

HARBOURSIDE ON THE LAGOON CONDOMINIUMS PHASE II 0.235 ACRE

EXHIBIT A-1

Lying in the Village of Russells Point, Section 36, Town 6, Range 8, Washington Township, Logan County, Ohio.

Being out of the remainder of the Indian Lake Harbourside Limited Partnership, an Ohio Limited Partnership, original 7.424 acre tract as deeded in Official Record 23, Page 93 of the Logan County Records of Deeds and being more particularly described as follows:

Beginning at a drill hole in concrete found on the west right-of-way of Chase Avenue (20 feet wide) on the northeast corner of the Harbourside on the Lagoon Condominiums Phase I, (Plat Cabinet B, Slide 30A).

THENCE, with a northerly line of the Harbourside on the Lagoon Condominiums Phase I, N 48°-29'-47" W, a distance of 227.93 feet to a drill hole found in concrete at the TRUE POINT OF BEGINNING.

THENCE, with the lines of the Harbourside on the Lagoon Condominiums Phase I the following four courses:

S 41°-30'-17" W, a distance of 32.27 feet to a MAG nail set.

N 48°-30'-18" W, a distance of 43.73 feet to a 5/8 inch iron rod found.

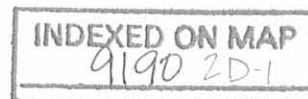
S 41°-30'-13" W, a distance of 40.46 feet to a point in water.

S 23°-39'-34" W, a distance of 36.60 feet to a point in water.

THENCE, N 55°-23'-06" W, a distance of 85.96 feet to a MAG nail set in concrete, passing a MAG nail set at 83.96 feet.

THENCE, N 39°-50'-57" E, a distance of 117.94 feet to a MAG nail set in concrete.

THENCE, S 48°-29'-47" E, a distance of 121.27 feet to the point of beginning.



Lee Surveying and Mapping Co., Inc.

Land Surveys • Topography • Subdivisions • Construction Layout

117 N. Madriver St.
Bellefontaine OH 43311



Phone: (937) 593-7335
Fax: (937) 593-7444

Containing 0.235 acre.

The basis for bearings is the northeasterly line of Harbourside on the Lagoon Condominiums Phase I, being N 48°-29'-47" W, and all other bearings are from angles and distances measured in a field survey by Lee Surveying and Mapping Co., Inc. on February 21, 2001.

Description prepared by:

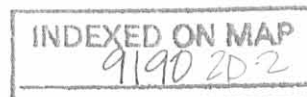


ORIGINAL STAMP IN GREEN

A handwritten signature in black ink, appearing to read 'Jeffrey I. Lee', written over the professional seal.

Jeffrey I. Lee
Professional Surveyor 6359
February 26, 2001
Revised June 25, 2001

L-1134



REC'D 7-23-01 SMY/OL

Lee Surveying and Mapping Co., Inc.

Land Surveys • Topography • Subdivisions • Construction Layout

117 N. Madriver St.
Bellefontaine OH 43311



Phone: (937) 593-7335
Fax: (937) 593-7444

HARBOURSIDE ON THE LAGOON CONDOMINIUMS PHASE II INGRESS\EGRESS AND PARKING EASEMENT

EXHIBIT A-2

Lying in the Village of Russells Point, Section 36, Town 6, Range 8, Washington Township, Logan County, Ohio.

Being ingress\egress and parking easement over the remainder of the Indian Lake Harbourside Limited Partnership, an Ohio Limited Partnership, original 7.424 acre tract as deeded in Official Record 23, Page 93, and all of the 0.211 acre tract as deeded in Official Record 290, Page 240 of the Logan County Records of Deeds and being more particularly described as follows:

Beginning at a drill hole in concrete found on the west right-of-way of Chase Avenue (20 feet wide) on the northeast corner of the Harbourside on the Lagoon Condominiums Phase I, (Plat Cabinet B, Slide 30A).

THENCE, with a northerly line and northerly line extended of the Harbourside on the Lagoon Condominiums Phase I, N 48°-29'-47" W, a distance of 349.20 feet to a MAG nail set in concrete, passing a drill hole found in concrete at 227.93 feet.

THENCE, S 39°-50'-57" W, a distance of 117.94 feet to a MAG nail set in concrete.

THENCE, N 55°-23'-06" W, a distance of 25.10 feet to a point.

THENCE, N 39°-50'-57" E, a distance of 66.28 feet to a 5/8 inch iron rod found.

THENCE, with the lines of the American Society of Ephesus, Inc. an Ohio Non-Profit Corporation 0.234 acre tract, (O.R. 290, Pg. 243), the following three courses:

N 39°-50'-57" E, a distance of 91.88 feet to a 5/8 inch iron rod found.

S 50°-36'-38" E, a distance of 46.44 feet to a 5/8 inch iron rod found.

N 19°-26'-50" E, a distance of 7.36 feet to a 5/8 inch iron rod found.

THENCE, with the southwesterly lines of the Roderick J. Clark 0.552 acre tract, (O.R. 347, Pg. 339), the following two (2) courses:

INDEXED ON MAP
9190 2D-3

Lee Surveying and Mapping Co., Inc.

Land Surveys • Topography • Subdivisions • Construction Layout

117 N. Madriver St.
Bellefontaine OH 43311



Phone: (937) 593-7335
Fax: (937) 593-7444

S 50°-27'-37" E, a distance of 101.10 feet to a 5/8 inch iron rod found.

S 50°-40'-47" E, a distance of 2.98 feet to a 5/8 inch iron rod found.

THENCE, with the lines of the Point Harbor Inc., an Ohio Corporation, original 2.94 acre tract, (O.R. 347, Pg. 341, Tract I), the following two (2) courses:

S 42°-15'-47" W, a distance of 29.20 feet to a 5/8 inch iron rod found.

S 48°-27'-54" E, a distance of 221.59 feet to a 5/8 inch iron rod found.

THENCE, with the west right-of-way of Chase Avenue, S 23°-44'-07" W, a distance of 20.99 feet to the point of beginning.

The basis for bearings is the northeasterly line of Harbourside on the Lagoon Condominiums Phase I, being N 48°-29'-47" W, and all other bearings are from angles and distances measured in a field survey by Lee Surveying and Mapping Co., Inc. on February 21, 2001.



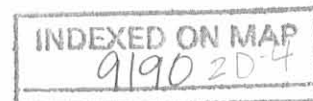
ORIGINAL STAMP IN GREEN

Description prepared by:

A handwritten signature in black ink, appearing to read 'J. Lee', written over the typed name and title.

Jeffrey I. Lee
Professional Surveyor 6359
February 26, 2001
Revised June 25, 2001

L-1134



Lee Surveying and Mapping Co., Inc.

Land Surveys • Topography • Subdivisions • Construction Layout

117 N. Madriver St.
Bellefontaine OH 43311



Phone: (937) 593-7335
Fax: (937) 593-7444

HARBOURSIDE ON THE LAGOON CONDOMINIUMS ADDITIONAL PROPERTY 0.951 ACRE EXHIBIT A-3

Lying in the Village of Russells Point, Section 36, Town 6, Range 8, Washington Township, Logan County, Ohio.

Being out of the remainder of the Indian Lake Harbourside Limited Partnership, an Ohio Limited Partnership, original 7.424 acre tract as deeded in Official Record 23, Page 93, and all of the 0.211 acre tract as deeded in Official Record 290, Page 240 of the Logan County Records of Deeds and being more particularly described as follows:

Beginning at a drill hole in concrete found on the west right-of-way of Chase Avenue (20 feet wide) on the northeast corner of the Harbourside on the Lagoon Condominiums Phase I, (Plat Cabinet B, Slide 30A).

THENCE, with a northerly line and northerly line extended of the Harbourside on the Lagoon Condominiums Phase I, N 48°-29'-47" W, a distance of 349.20 feet to a MAG nail set in concrete, passing a drill hole found in concrete at 227.93 feet.

THENCE, S 39°-50'-57" W, a distance of 117.94 feet to a MAG nail set in concrete.

THENCE, S 55°-23'-06" E, a distance of 85.96 feet to a point in the water, passing a MAG nail set at 83.96 feet.

THENCE, with the lines of the Harbourside on the Lagoon Condominiums Phase I the following two courses:

S 23°-39'-34" W, a distance of 132.09 feet to a 5/8 inch iron rod found.

N 56°-20'-26" W, a distance of 170.94 feet to a point in water, passing a 5/8 inch iron rod found at 161.09 feet and a chiseled "X" in concrete set on the sea wall at 165.40 feet.

THENCE, N 13°-21'-13" E, a distance of 41.02 feet to a point in water.

THENCE, N 25°-30'-13" E, a distance of 65.59 feet to a 5/8 inch iron rod set, passing a chiseled "X" in concrete set at 10.58 feet.

THENCE, N 29°-42'-13" E, a distance of 87.70 feet to a 5/8 inch iron rod set.

INDEXED ON MAP
9190 20-5

Lee Surveying and Mapping Co., Inc.

Land Surveys • Topography • Subdivisions • Construction Layout

117 N. Madriver St.
Bellefontaine OH 43311



Phone: (937) 593-7335
Fax: (937) 593-7444

THENCE, with the lines of the American Society of Ephesus, Inc. an Ohio Non-Profit Corporation 0.234 acre tract (O.R. 290, Pg. 243), the following four courses:

S 61°-43'-13" E, a distance of 74.01 feet to a 5/8 inch iron rod found.

N 39°-50'-57" E, a distance of 91.88 feet to a 5/8 inch iron rod found.

S 50°-36'-38" E, a distance of 46.44 feet to a 5/8 inch iron rod found.

N 19°-26'-50" E, a distance of 7.36 feet to a 5/8 inch iron rod found.

THENCE, with the southwesterly lines of the Roderick J. Clark 0.552 acre tract (O.R. 347, Pg. 339), the following two (2) courses:

S 50°-27'-37" E, a distance of 101.10 feet to a 5/8 inch iron rod found.

S 50°-40'-47" E, a distance of 2.98 feet to a 5/8 inch iron rod found.

THENCE, with the lines of the Point Harbor Inc., an Ohio Corporation, original 2.94 acre tract (O.R. 347, Pg. 341, Tract I), the following two (2) courses:

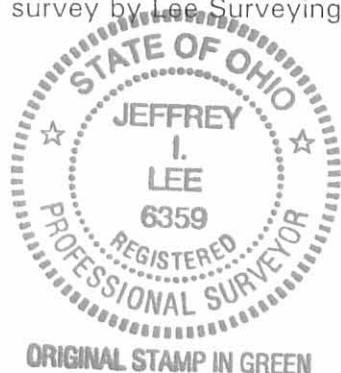
S 42°-15'-47" W, a distance of 29.20 feet to a 5/8 inch iron rod found.

S 48°-27'-54" E, a distance of 221.59 feet to a 5/8 inch iron rod found.

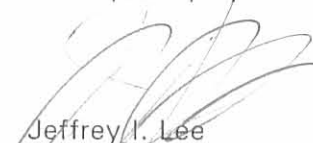
THENCE, with the west right-of-way of Chase Avenue, S 23°-44'-07" W, a distance of 20.99 feet to the point of beginning.

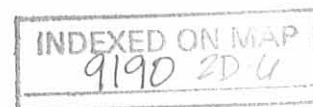
Containing 0.951 acre.

The basis for bearings is the northeasterly line of Harbourside on the Lagoon Condominiums Phase I, being N 48°-29'-47" W, and all other bearings are from angles and distances measured in a field survey by Lee Surveying and Mapping Co., Inc. on February 21, 2001.



Description prepared by:


Jeffrey I. Lee
Professional Surveyor 6359
February 26, 2001
Revised June 25, 2001



L-1134

JUNE 1986

The following described real estate situated in the State of Ohio, County of Logan, being part of Section 36, Town 6 south, Range 8 east in the Village of Russells Point and more particularly described as follows: WASHINGTON TWP.

Beginning at an Iron Bar in the west line of Chase Avenue at the southeast corner of Schuler Marina, Inc. 's 2.94 acre tract as described in D. B. Vol 319 Page 328.

Thence with said west line S. 23 39' 34" W. 807.00 feet to an Iron Bar.

Thence N. 56 20' 26" W. 281.983 feet to an Iron Bar.

Thence N. 33 39' 34" E. 102.00 feet to an Iron Bar.

Thence N. 56 20' 26" W. 50.868 feet to the shoreline of a channel to Indian Lake.

Thence with said shoreline the following seven (7) courses:

- N. 10 57' 21" E. 67.636 feet
- N. 16 32' 08" E. 81.84 feet
- N. 00 38' 50" W. 200.91 feet
- N. 13 21' 13" E. 216.21 feet
- N. 25 30' 13" E. 65.59 feet
- N. 29 42' 13" E. 100.07 feet
- N. 12 07' 13" E. 6.612 feet to a point.

Thence S. 56 20' 26" E. 83.514 feet to an Iron Bar.

Thence N. 39 33' 13" E. 86.692 feet to an Iron Bar in the south line of the American Society of Ephesus, Inc.'s 0.57 acre tract as described in D.B. Vol. 350 Page 325.

Thence with said south line and the south line of said Schuler Marina tract S. 50 26' 47" E. 140.02 feet to an Iron Bar, passing an Iron Bar at the southeast corner of said .57 acre tract at 39.02 feet.

Thence with the south line of said Schuler Tract S. 50 25' 47" E. 3.00 feet to an Iron Bar

Thence with the south line of said Schuler Tract S. 42 02' 13" W. 29.14 feet to an Iron Bar

Thence with the south line of said Schuler Tract S. 48 29' 47" E. 221.46 feet to the place of beginning.

Containing 7.424 acres more or less.

The above described 7.424 acre tract being on the North side of The Phoenix Groups 9.57 acre tract as described in O.R. Vol _____ Page _____ and is the result of a field survey.

Reference is hereby made to a plat of this survey on file with the Logan County Engineer.

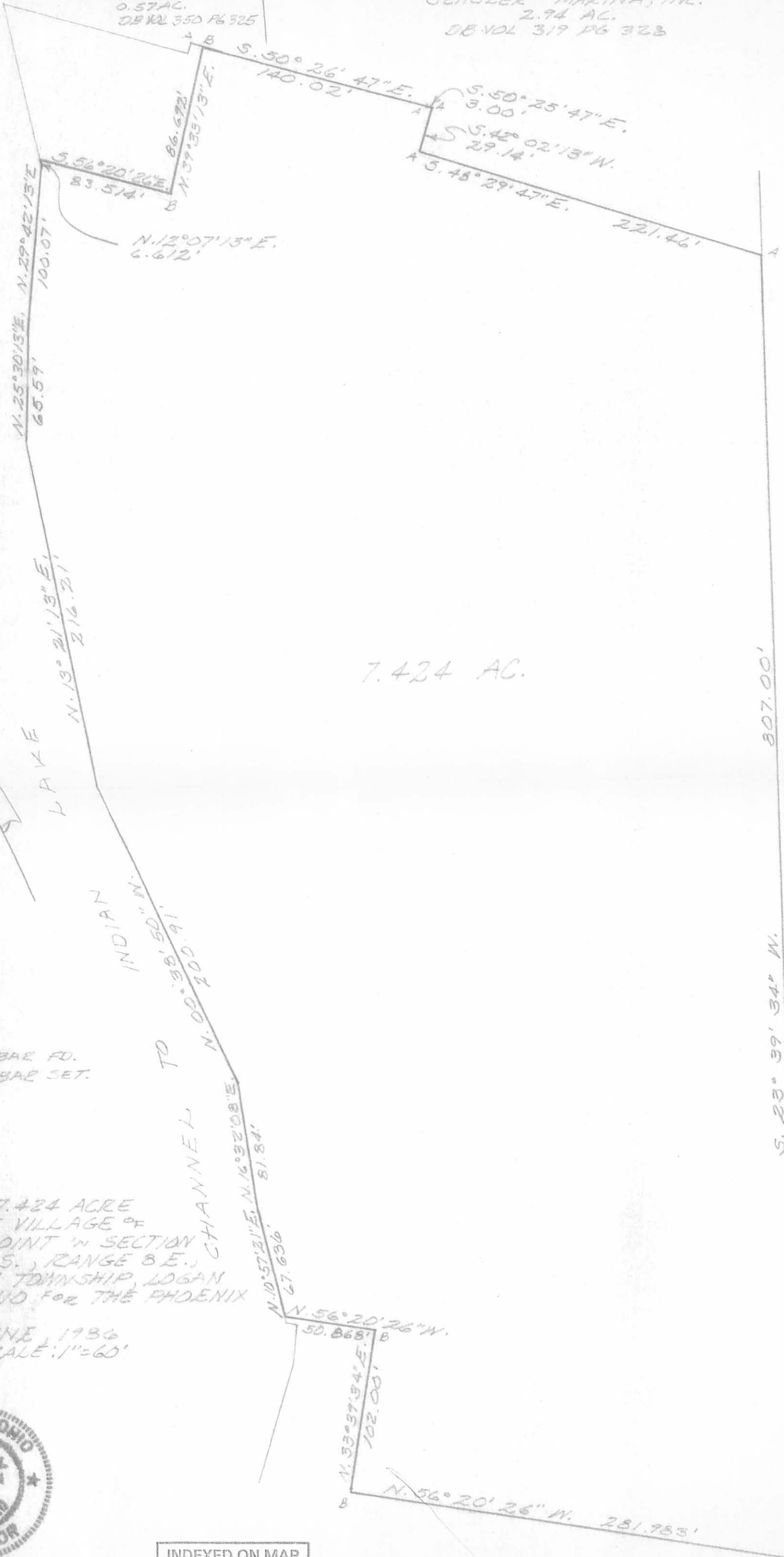
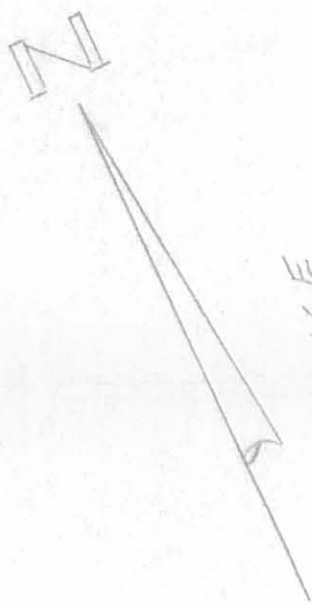
INDEXED ON MAP
3935 3D



Leslie H. Geeslin

AMERICAN SOCIETY
OF EPHEMUS, INC.
0.57 AC.
DB VOL 350 PG 325

SCHULER MARINA, INC.
2.94 AC.
DB VOL 319 PG 323



LEGEND:
A = 3/8" IRON BAR FD.
B = 5/8" IRON BAR SET.

SURVEY OF 7.424 ACRE
TRACT IN THE VILLAGE OF
RUSSELLS POINT IN SECTION
36, TOWN 6 S., RANGE 8 E.,
WASHINGTON TOWNSHIP, LOGAN
COUNTY, OHIO FOR THE PHOENIX
GROUP.

JUNE, 1986
SCALE: 1" = 60'



Leslie H. Geeslin
LESLIE M. GEESLIN
RUSHSVANIAN, OHIO

INDEXED ON MAP
3935 3P

807.00'
CHASE AVENUE (35')
S. 23° 39' 34" W.

Lee Surveying and Mapping Co., Inc.

Land Surveys • Topography • Subdivisions • Construction Layout

117 N. Madriver St.
Bellefontaine OH 43311



Phone: (937) 593-7335
Fax: (937) 593-7444

HARBOURSIDE ON THE LAGOON CONDOMINIUMS PHASE III 0.241 ACRE

EXHIBIT A-1

Lying in the Village of Russells Point, Section 36, Town 6, Range 8, Washington Township, Logan County, Ohio.

Being of the remainder of the Indian Lake Harbourside Limited Partnership, an Ohio Limited Partnership, original 7.424 acre tract as deeded in Official Record 23, Page 93 of the Logan County Records of Deeds and being more particularly described as follows:

Beginning at a drill hole in concrete found on the west right-of-way of Chase Avenue (20 feet wide) on the northeast corner of the Harbourside on the Lagoon Condominiums Phase I, (Plat Cabinet B, Slide 30A).

THENCE, with a northerly line of the Harbourside on the Lagoon Condominiums Phase I, N 48°-29'-47" W, a distance of 227.93 feet to a drill hole found in concrete.

THENCE, with the lines of the Harbourside on the Lagoon Condominiums Phase I and the lines of the Harbourside on the Lagoon Condominiums Phase II (Plat Cabinet B, Slide 64A) the following four courses:

S 41°-30'-17" W, a distance of 32.27 feet to a MAG nail set.

N 48°-30'-18" W, a distance of 43.73 feet to a 5/8 inch iron rod found.

S 41°-30'-13" W, a distance of 40.46 feet to a point in water.

S 23°-39'-34" W, a distance of 36.60 feet to a point in water at the TRUE POINT OF BEGINNING.

THENCE, with the lines of the Harbourside on the Lagoon Condominiums Phase I the following two courses:

S 23°-39'-34" W, a distance of 132.09 feet to a 5/8 inch iron rod found.

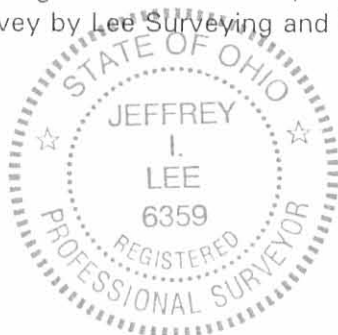
N 56°-20'-26" W, a distance of 74.67 feet to MAG nail set.

THENCE, N 19°-04'-30" E, a distance of 135.90 feet to a MAG nail set.

THENCE, with the south line of Harbourside on the Lagoon Phase II, S 55°-23'-06" E, a distance of 85.96 feet to the point of beginning, passing a MAG nail set at 83.96 feet.

Containing 0.241 acre.

The basis for bearings is the northeasterly line of Harbourside on the Lagoon Condominiums Phase I, being N 48°-29'-47" W, and all other bearings are from angles and distances measured in a field survey by Lee Surveying and Mapping Co., Inc. on June 25, 2002.

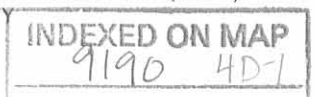


ORIGINAL STAMP IN GREEN

Description prepared by:

Jeffrey I. Lee
Jeffrey I. Lee
Professional Surveyor 6359
June 28, 2002

L-1134



Receipt # 7-9-02 OK

Lee Surveying and Mapping Co., Inc.

Land Surveys • Topography • Subdivisions • Construction Layout

117 N. Madriver St.
Bellefontaine OH 43311



Phone: (937) 593-7335
Fax: (937) 593-7444

HARBOURSIDE ON THE LAGOON CONDOMINIUMS ADDITIONAL PROPERTY 0.016 ACRE EXHIBIT A-2

Lying in the Village of Russells Point, Section 36, Town 6, Range 8, Washington Township, Logan County, Ohio.

Being all of the Harbourside L.T.D. 0.016 acre tract as deeded and described in Official Record 494, Page 861 of the Logan County Records of Deeds and being more particularly described as follows:

Beginning at a 5/8 inch iron rod set on the northwest corner of the remainder of the Indian Lake Harbourside Limited Partnership, an Ohio Limited Partnership, 7.424 acre tract (O.R. 23, Pg. 93) and on the southwest corner of the American Society of Ephesus, Inc., an Ohio Non-Profit Corporation, 0.234 acre tract (O.R. 290, Pg. 243).

THENCE, with the lines of the said 7.424 acre tract, the following two (2) courses:

S 29°-42'-13" W, a distance of 87.70 feet to a 5/8 inch iron rod set.

S 25°-30'-13" W, a distance of 65.59 feet to a chiseled "X" in concrete set in the sea wall.

THENCE, with the concrete sea wall, N 10°-09'-38" E, a distance of 23.67 feet to a MAG nail set.

THENCE, continuing with the concrete sea wall, N 28°-51'-49" E, a distance of 116.03 feet to a 5/8 inch iron rod set.

THENCE, continuing with the concrete sea wall, N 20°-08'-02" E, a distance of 4.13 feet to a chiseled "X" in concrete set.

THENCE, with the northeasterly line of the said 7.424 acre tract extended, S 61°-43'-13" E, a distance of 6.28 feet to the point of beginning.

Containing 0.016 acre.

The basis for bearings is the northeasterly line of Harbourside on the Lagoon Condominiums, being N 48°-29'-47" W, and all other bearings are from angles and distances measured in a field survey by Lee Surveying and Mapping Co., Inc. on January 4, 2000.

Description prepared by:



ORIGINAL STAMP IN GREEN

A handwritten signature in black ink, appearing to read 'Jeffrey I. Lee'.
Jeffrey I. Lee
Professional Surveyor 6359
January 10, 2000

L-1134

Revised 7-10-02 01/02/04

Lee Surveying and Mapping Co., Inc.

Land Surveys • Topography • Subdivisions • Construction Layout

117 N. Madriver St.
Bellefontaine OH 43311



Phone: (937) 593-7335
Fax: (937) 593-7444

HARBOURSIDE ON THE LAGOON CONDOMINIUMS ADDITIONAL PROPERTY 0.710 ACRE EXHIBIT A-3

Lying in the Village of Russells Point, Section 36, Town 6, Range 8, Washington Township, Logan County, Ohio.

Being all of the remainder of the Indian Lake Harbourside Limited Partnership, an Ohio Limited Partnership, original 7.424 acre tract as deeded in Official Record 23, Page 93, and all of the remainder of the original 0.211 acre tract as deeded in Official Record 290, Page 240 of the Logan County Records of Deeds and being more particularly described as follows:

Beginning at a drill hole in concrete found on the west right-of-way of Chase Avenue (20 feet wide) on the northeast corner of the Harbourside on the Lagoon Condominiums Phase I, (Plat Cabinet B, Slide 30A).

THENCE, with the northerly lines of the Harbourside on the Lagoon Condominiums Phase I and Phase II, (Plat Cabinet B, Slide 64A) N 48°-29'-47" W, a distance of 349.20 feet to a MAG nail set in concrete, passing a drill hole found in concrete at 227.93 feet.

THENCE, with the west line of the said Phase II, S 39°-50'-57" W, a distance of 117.94 feet to a MAG nail set in concrete.

THENCE, S 19°-04'-30" W, a distance of 135.90 feet to a MAG nail set.

THENCE, with the north line of the Harbourside on the Lagoon Condominiums Phase I, N 56°-20'-26" W, a distance of 96.27 feet to a point in water, passing a 5/8 inch iron rod found at 86.42 feet and a chiseled "X" in concrete set on the sea wall at 90.73 feet.

THENCE, N 13°-21'-13" E, a distance of 41.02 feet to a point in water.

THENCE, with the east line of the Harbourside L.T.D. 0.016 acre tract (O.R. 494, Pg. 861) N 25°-30'-13" E, a distance of 65.59 feet to a 5/8 inch iron rod set, passing a chiseled "X" in concrete set at 10.58 feet.

THENCE, with the east line of the said 0.016 acre tract, N 29°-42'-13" E, a distance of 87.70 feet to a 5/8 inch iron rod set.

THENCE, with the lines of the American Society of Ephesus, Inc. an Ohio Non-Profit Corporation 0.234 acre tract (O.R. 290, Pg. 243), the following four courses:

S 61°-43'-13" E, a distance of 74.01 feet to a 5/8 inch iron rod found.

N 39°-50'-57" E, a distance of 91.88 feet to a 5/8 inch iron rod found.

S 50°-36'-38" E, a distance of 46.44 feet to a 5/8 inch iron rod found.

N 19°-26'-50" E, a distance of 7.36 feet to a 5/8 inch iron rod found.

THENCE, with the southwesterly lines of the Roderick J. Clark 0.552 acre tract (O.R. 347, Pg. 339), the following two (2) courses:

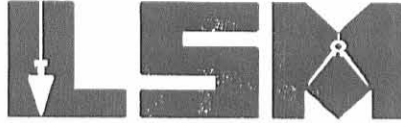
S 50°-27'-37" E, a distance of 101.10 feet to a 5/8 inch iron rod found.

S 50°-40'-47" E, a distance of 2.98 feet to a 5/8 inch iron rod found.

Lee Surveying and Mapping Co., Inc.

Land Surveys • Topography • Subdivisions • Construction Layout

117 N. Madriver St.
Bellefontaine OH 43311



Phone: (937) 593-7335
Fax: (937) 593-7444

THENCE, with the lines of the Point Harbor Inc., an Ohio Corporation, original 2.94 acre tract (O.R. 347, Pg. 341, Tract I), the following two (2) courses:

S 42°-15'-47" W, a distance of 29.20 feet to a 5/8 inch iron rod found.

S 48°-27'-54" E, a distance of 221.59 feet to a 5/8 inch iron rod found.

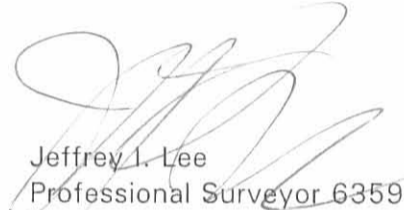
THENCE, with the west right-of-way of Chase Avenue, S 23°-44'-07" W, a distance of 20.99 feet to the point of beginning.

Containing 0.710 acre.

The basis for bearings is the northeasterly line of Harbourside on the Lagoon Condominiums Phase I, being N 48°-29'-47" W, and all other bearings are from angles and distances measured in a field survey by Lee Surveying and Mapping Co., Inc. on June 25, 2002.

Description prepared by:




Jeffrey I. Lee
Professional Surveyor 6359
June 28, 2002

L-1134

LESLIE H. GEESLIN

REGISTERED SURVEYOR 5248

P. O. BOX 274

RUSHSVLVANIA, OHIO 43347

TELEPHONE: (513) 468-2793

HARBOURSIDE ON THE LAGOON, 241 CHASE AVE., RUSSELLS POINT, OHIO
SURVEY

March 20 , 1997

Phase 1

The following described real estate situated in the State of Ohio, County of Logan, Township of Washington, being part of Section 36, Town 6 S., Range 8 E., in the Village of Russells Point, and more particularly described as follows:

Beginning at a 5/8 inch iron bar found in the west line of Chase Ave. at the northeast corner of Phase 2 of Harbourside at Indian Lake Condominium's 2.242 acre tract as shown in File Cabinet "A" Slide 653, said iron bar being N. 23° 39' 34" E. 756.71 feet from a cap and nail found at the intersection of the north line of Main Street with the west line of said Chase Ave.

Thence with the north line of said Phase 2, the following three courses:

1.) N. 56° 20' 26" W. 96.83 feet to a 5/8 inch iron bar found.

2.) N. 33° 39' 34" E. 25.00 feet to a 5/8 inch iron bar found.

3.) N. 56° 20' 26" W. 353.84 feet to a point in the shore line of Indian Lake, passing a 5/8 inch iron bar found at 343.84 feet.

Thence with the shore line of Indian Lake N. 13° 21' 13" E. 54.38 feet to a 5/8 inch iron bar set.

Thence S. 56° 20' 26" E. 171.00 feet to a 5/8 inch iron bar set.

Thence N. 23° 39' 34" E. 168.69 feet to a 5/8 inch iron bar set.

Thence N. 41° 30' 13" E. 40.46 feet to a 5/8 inch iron bar set.

Thence S. 48° 29' 47" E. 43.78 feet to a 5/8 inch iron bar set.

Thence N. 41° 30' 13" E. 32.27 feet to a 5/8 inch iron bar set.

Thence S. 48° 29' 47" E. 227.90 feet to a 5/8 inch iron bar set in the west line of Chase Avenue.

Thence with said west line of Chase Avenue S. 23° 39' 34" W. 281.07 feet to the place of beginning.

Containing 1.977 acres more or less.

The above described 1.977 acre tract being part of Indian Lake Harbourside Partnership, an Ohio Limited Partnership's 7.424 acre tract as described in O. R. Vol. 106 Page 267.

Bearings are based on Ohio State Plane Coordinates in this field survey by Leslie H. Geeslin, Reg. Surveyor 5248 on March 20 , 1998.



WASHINGTON56REED.SAM

9190 5D

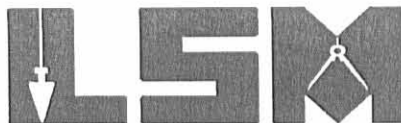
Leslie H. Geeslin

REC'D 9-20-00 SMJ/RE ✓

Lee Surveying and Mapping Co., Inc.

Land Surveys • Topography • Subdivisions • Construction Layout

117 N. Madriver St.
Bellefontaine OH 43311



Phone: (937) 593-7335
Fax: (937) 593-7444

INDIAN LAKE HARBOURSIDE LIMITED PARTNERSHIP 0.004 ACRES

Lying in the Village of Russells Point, Section 36, Town 6, Range 8, Washington Township, Logan County, Ohio.

Being out of the remainder of the Indian Lake Harbourside Limited Partnership, an Ohio Limited Partnership, original 7.424 acre tract as deeded in Official Record 23, Page 93, and 0.211 acre tract as deeded in Official Record 290, Page 240 of the Logan County Records of Deeds and being more particularly described as follows:

Beginning at a 5/8 inch iron rod set on the northwest corner of the remainder of the Indian Lake Harbourside Limited Partnership, an Ohio Limited Partnership, 7.424 acre tract (O.R. 23, Pg. 93) and on the southwest corner of the American Society of Ephesus, Inc., an Ohio Non-Profit Corporation, 0.234 acre tract (O.R. 290, Pg. 243).

THENCE, with the lines of the said 7.424 acre tract, the following two (2) courses:

S 29°-42'-13" W, a distance of 87.70 feet to a 5/8 inch iron rod set.

S 25°-30'-13" W, a distance of 55.01 feet to a chiseled "X" in concrete set in the sea wall at the TRUE POINT OF BEGINNING.

THENCE, with the concrete sea wall, S 10°-09'-38" W, a distance of 53.37 feet to a chiseled "X" in concrete set in the sea wall.

THENCE, N 56°-20'-26" W, a distance of 5.54 feet to a point in the water.

THENCE, N 13°-21'-13" E, a distance of 41.02 feet to a point in the water.

THENCE, N 25°-30'-13" E, a distance of 10.58 feet to the point of beginning.

Containing 0.004 acre.

The basis for bearings is the northeasterly line of Harbourside on the Lagoon Condominiums, being N 48°-29'-47" W, and all other bearings are from angles and distances measured in a field survey by Lee Surveying and Mapping Co., Inc. on January 4, 2000.

Description prepared by:

A handwritten signature in black ink, appearing to read 'J. Lee', is written over a faint circular stamp. The signature is fluid and cursive.

Jeffrey I. Lee
Professional Surveyor 6359
September 1, 2000



L-1134

9190 LTD

1
1998-6-98 OKG/1

LESLIE H. GEESLIN
REGISTERED SURVEYOR 5248
P. O. BOX 274
RUSHSVLVANIA, OHIO 43347
TELEPHONE: (937) 468-2793

HARBOURSIDE ON THE LAGOON

May 6, 1998

The following described 20 foot easement situated in the State of Ohio, County of Logan, Township of Washington, being part of Section 36, Town 6 S., Range 8 E., in the Village of Russells Point, and more particularly described as follows:

Beginning at a 5/8 inch iron bar found in the west line of Chase Avenue at the southeast corner of Point Harbor, Inc's 2.388 acre tract as described in O. R. Vol. 347 Page 341, Tract 1.

Thence with the west line of said Chase Ave. S. 23° 39' 34" W. 21.00 feet to a 5/8 inch iron bar set at the northeast corner of Harbourside on the Lagoon Condominium Phase 1.

Thence with the north line of said Phase 1 N. 48° 29' 47" W. 227.90 feet to a 5/8 inch iron bar set.

Thence N. 41° 30' 13" E. 20.00 feet to a 5/8 inch iron bar found at the southwest corner of said Point Harbor, Inc.'s 2.388 acre tract (Tr. 1).

Thence with the south line of said 2.388 acre tract S. 48° 29' 47" E. 221.46 feet to the place of beginning.

The above described 20 foot easement being part of Indian Lake Harbourside Limited Partnership's 7.424 acre tract as described in O. R. Vol. 106 page 267.

Bearings are based on an assumed bearing (S. 23° 39' 34" W.) for the west line of Chase Avenue in this field survey by Leslie H. Geeslin, Reg. Surveyor 5248 on May 6, 1998.

WASHINGTON\63\REED6.SAM



Leslie H. Geeslin

INDEXED ON MAP
9190 70