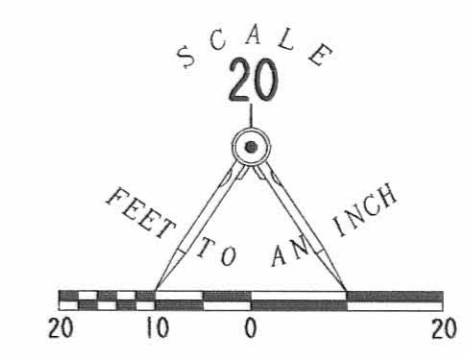
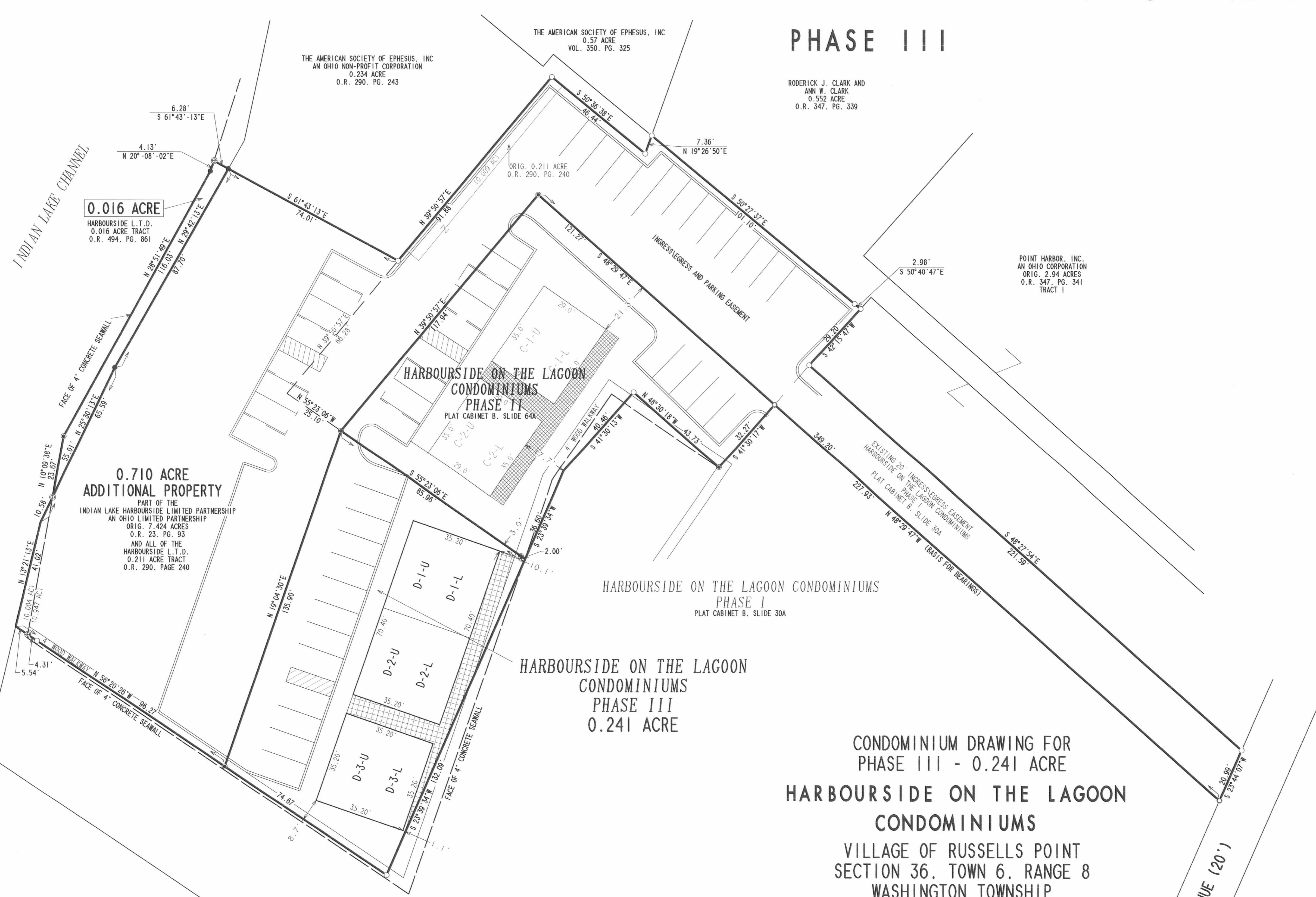


HARBOURSIDE ON THE LAGOON CONDOMINIUMS

PHASE III



- LEGEND**
- 5/8 INCH IRON ROD SET
 - 5/8 INCH IRON ROD FOUND
 - MAG NAIL SET
 - ⊕ CHISELED 'X' IN CONCRETE SET
 - DRILL HOLE IN CONCRETE FOUND
 - ▨ LIMITED COMMON AREA

APPROVED BY THE RUSSELLS POINT PLANNING COMMISSION

THIS 15TH DAY OF August, 2002.

Robert J. Gaudy, Mayor
CHAIRMAN, RUSSELLS POINT PLANNING COMMISSION

PLAT CHECKED *Jim C. Hill* 8-15-02

DESCRIPTION CHECKED *Jon C. Hill* 8-15-02

TRANSFERRED THIS 15TH DAY OF August, 2002.

Michael E. Gowan
AUDITOR, LOGAN COUNTY, OHIO

RECORDED IN PLAT CABINET B, SLIDE 75B, 76A, 76B

RECEIVED FOR RECORD AT 1:32 O'CLOCK P.M.

THIS 15TH DAY OF August, 2002.
Linda Hanson
RECORDER, LOGAN COUNTY, OHIO

INDIAN LAKE SANITARY SEWER DISTRICT

CONDOMINIUM DRAWING FOR
PHASE III - 0.241 ACRE
**HARBOURSIDE ON THE LAGOON
CONDOMINIUMS**
VILLAGE OF RUSSELLS POINT
SECTION 36, TOWN 6, RANGE 8
WASHINGTON TOWNSHIP
LOGAN COUNTY, OHIO

PART OF THE
INDIAN LAKE HARBOURSIDE LIMITED PARTNERSHIP
AN OHIO LIMITED PARTNERSHIP
ORIGINAL 7.424 ACRES
OFFICIAL RECORD 23, PAGE 93
AND ALL OF THE ORIGINAL 0.016 ACRE
OFFICIAL RECORD 494, PAGE 861

WE DO HEREBY STATE THAT THESE DRAWINGS OF HARBOURSIDE ON THE LAGOON CONDOMINIUMS, PHASE III SHOW ALL BUILDINGS AS CONSTRUCTED.

Michael W. Bow
MICHAEL W. BOW
PROFESSIONAL ENGINEER 38860
JUNE 21, 2002

Jeffrey J. Lee
JEFFREY J. LEE
PROFESSIONAL SURVEYOR 6359
JUNE 21, 2002



THE M & K ENGINEERING CO.
1691 T.R. 31 NORTH
BELLEFONTAINE, OHIO 43311
(937) 592-2697

LEE SURVEYING AND MAPPING CO., INC.
117 NORTH MADRIVER STREET
BELLEFONTAINE, OHIO, 43311
(937) 593-7335



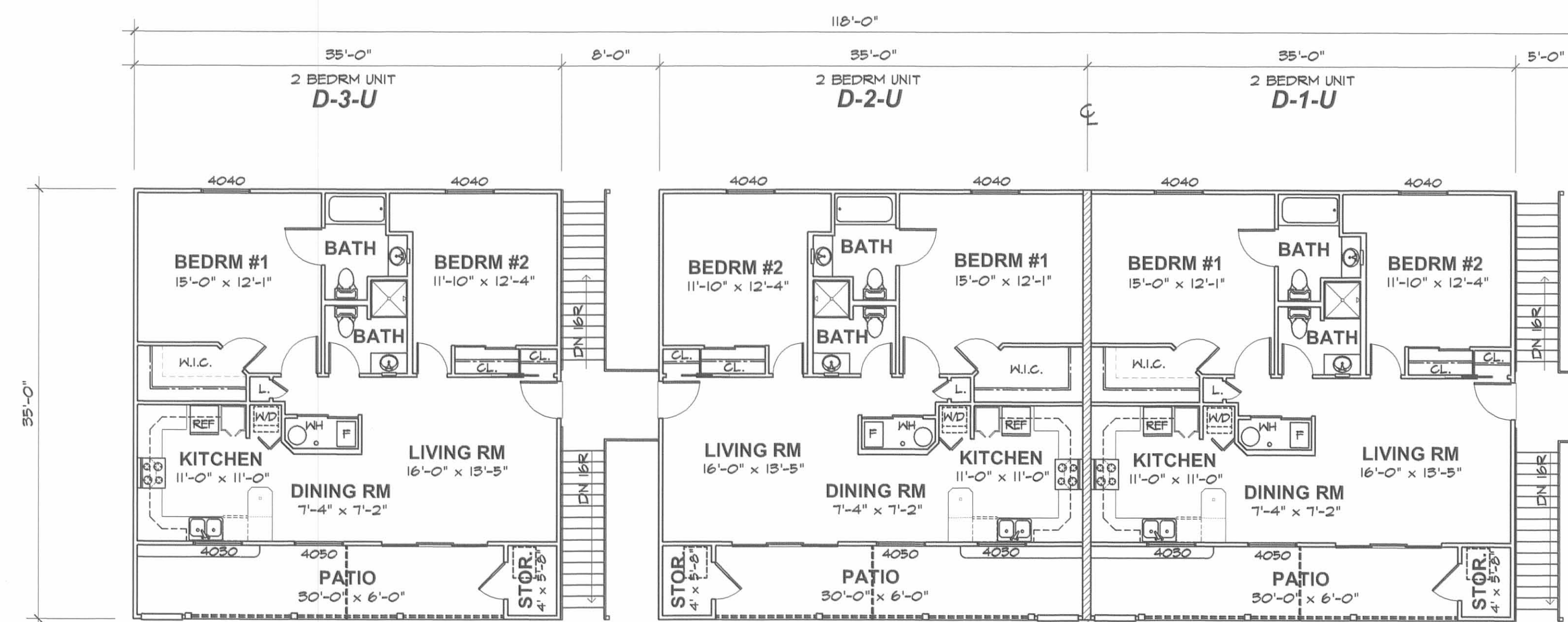
2 WORKING DAYS
BEFORE YOU DIG
CALL TOLL FREE 800-362-2764
OHIO UTILITIES PROTECTION SERVICE.

COPYRIGHT 2002 BY:
LEE SURVEYING & MAPPING CO., INC.
117 North Madriver Street
Bellefontaine, Ohio 43311
(937) 593-7335
D-396 HRBRS03 HRBRSIDE.DAT L-1134-1

700000 & 8003

PREPARED BY:

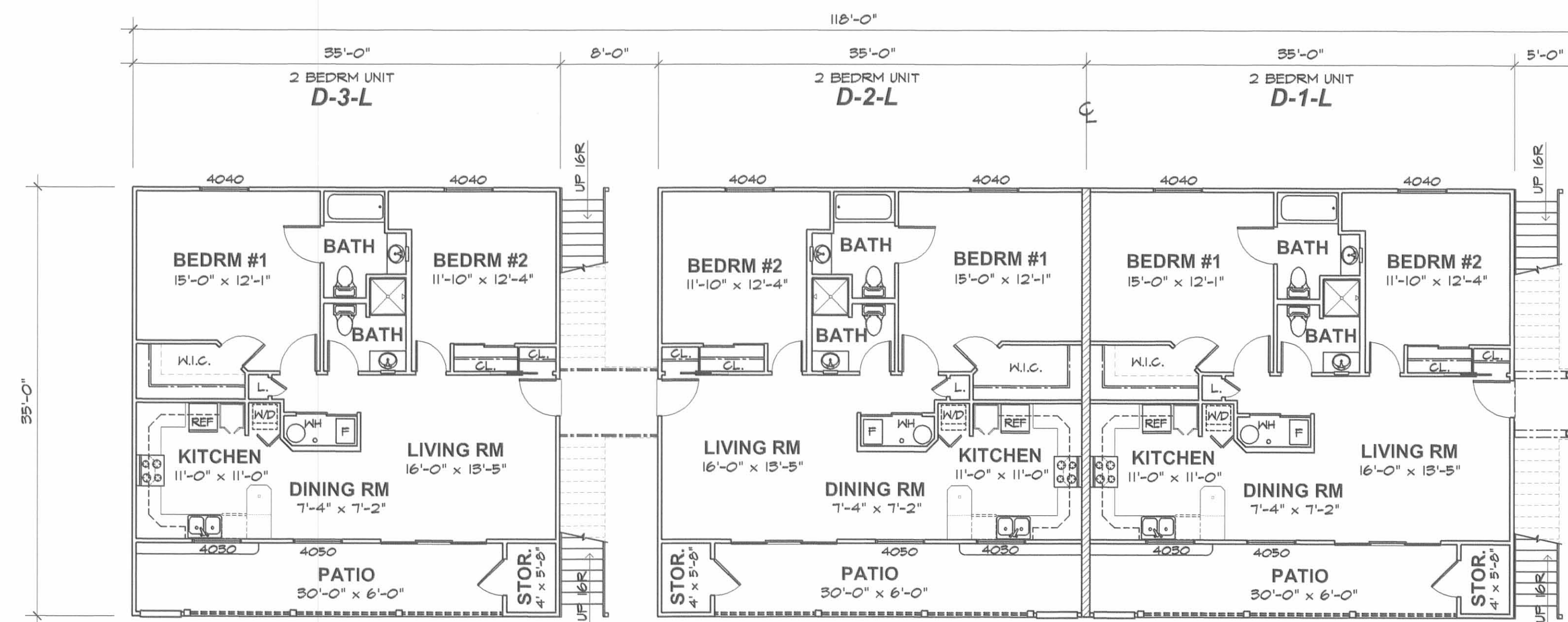
Michael W. Bow 7/8/2002
 MICHAEL W. BOW, P.E. DATE
 THE M&K ENGINEERING CO.



UNIT DESIGNATION DESCRIPTION:
 D-1-U = BUILDING "D"
 CONDO #1
 UPPER LEVEL

SECOND FLOOR PLAN

SCALE: 1/8" = 1'-0"



UNIT DESIGNATION DESCRIPTION:
 D-1-L = BUILDING "D"
 CONDO #1
 LOWER LEVEL

FIRST FLOOR PLAN

SCALE: 1/8" = 1'-0"

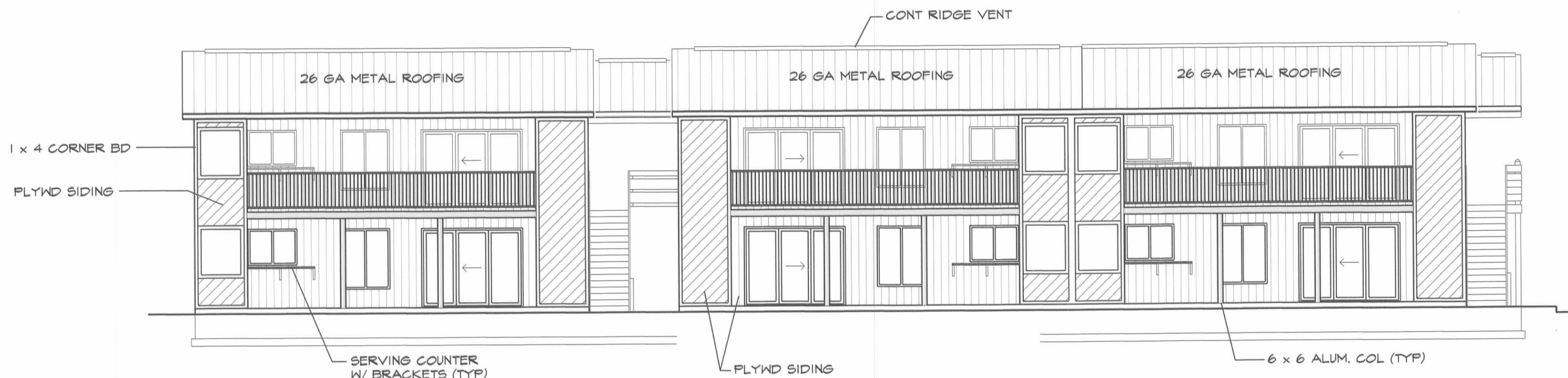
M & K ENGINEERING CO.
 P.O. BOX 1457
 RUSSELLS POINT, OHIO

**NEW BUILDING "D" FOR:
 HARBOURSIDE ON THE LAGOON
 RUSSELLS POINT, OHIO**

SHEET

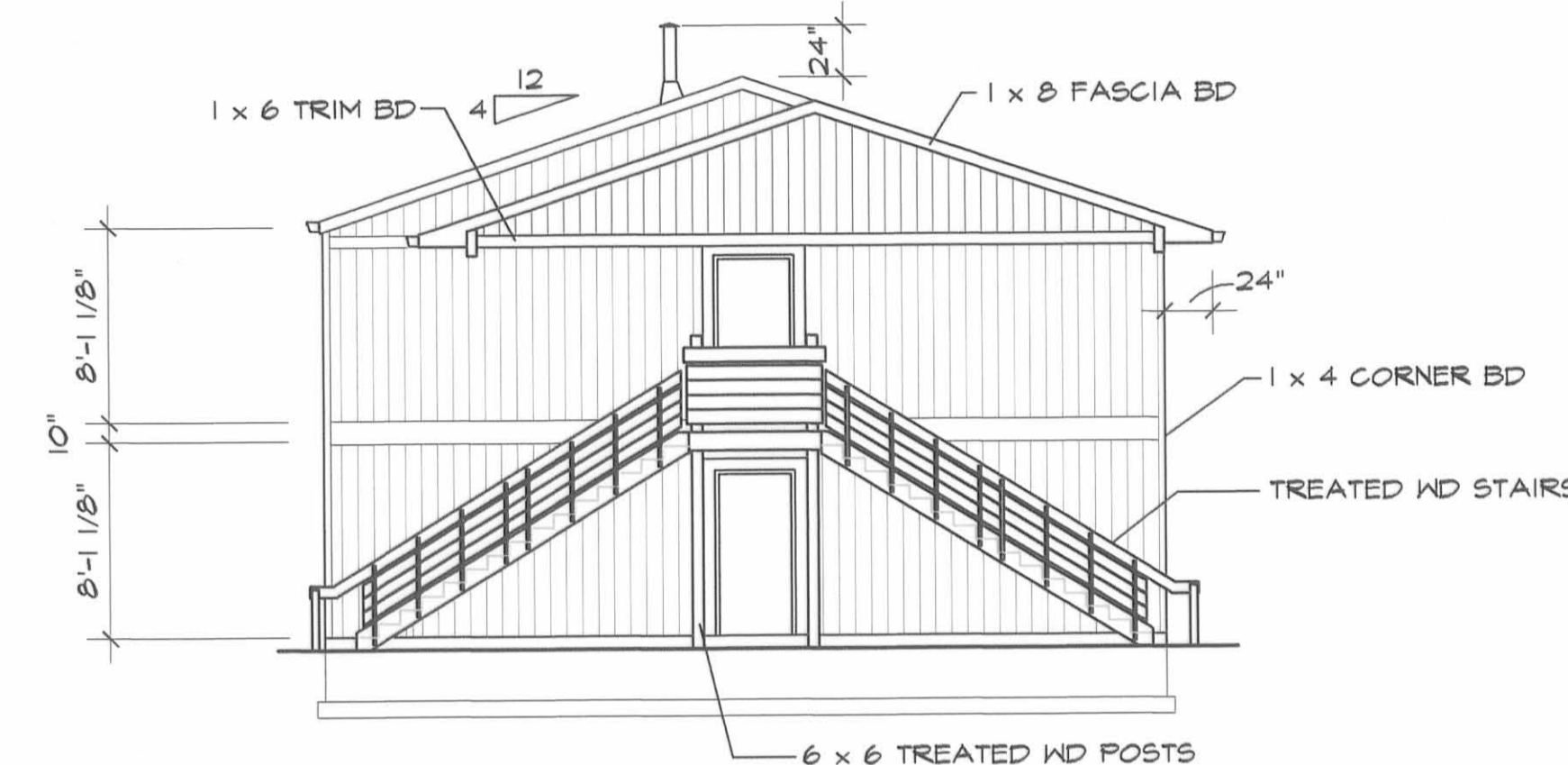
2

SHEET 2 OF 3



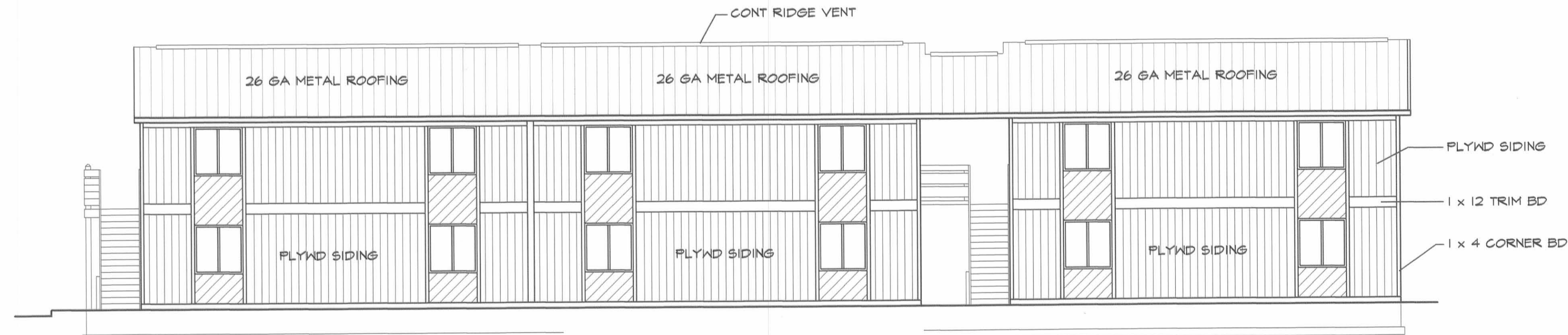
WATER SIDE ELEVATION FRONT

SCALE: 1/8" = 1'-0"



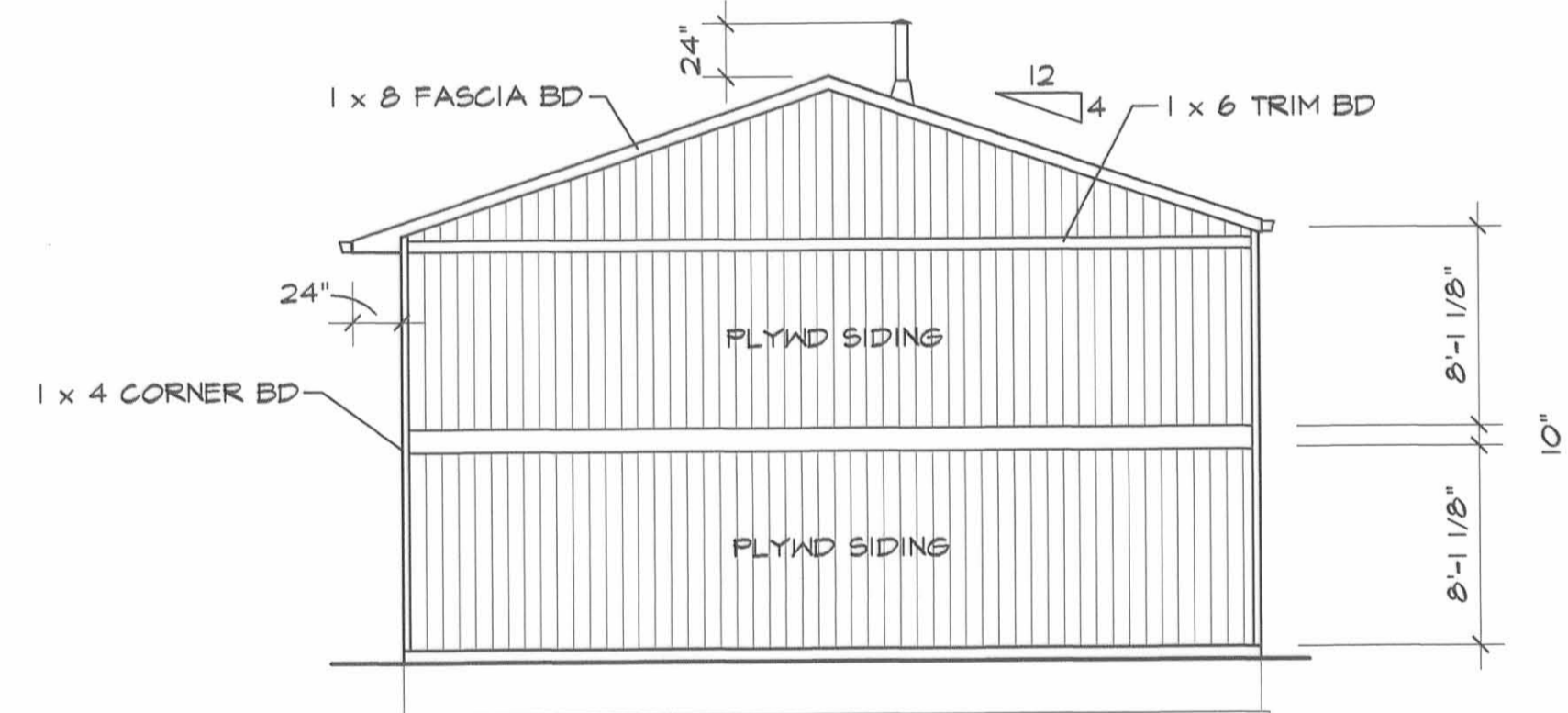
SIDE ELEV RIGHT

SCALE: 1/8" = 1'-0"



PARKING SIDE ELEVATION REAR

SCALE: 1/8" = 1'-0"



SIDE ELEV LEFT

SCALE: 1/8" = 1'-0"

PREPARED BY:

Michael W. Bow
MICHAEL W. BOW, P.E.
THE M&K ENGINEERING CO.

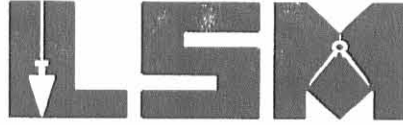
7/8/2002
DATE



Lee Surveying and Mapping Co., Inc.

Land Surveys • Topography • Subdivisions • Construction Layout

117 N. Madriver St.
Bellefontaine OH 43311



Phone: (937) 593-7335
Fax: (937) 593-7444

HARBOURSIDE ON THE LAGOON CONDOMINIUMS PHASE III 0.241 ACRE

EXHIBIT A-1

Lying in the Village of Russells Point, Section 36, Town 6, Range 8, Washington Township, Logan County, Ohio.

Being of the remainder of the Indian Lake Harbourside Limited Partnership, an Ohio Limited Partnership, original 7.424 acre tract as deeded in Official Record 23, Page 93 of the Logan County Records of Deeds and being more particularly described as follows:

Beginning at a drill hole in concrete found on the west right-of-way of Chase Avenue (20 feet wide) on the northeast corner of the Harbourside on the Lagoon Condominiums Phase I, (Plat Cabinet B, Slide 30A).

THENCE, with a northerly line of the Harbourside on the Lagoon Condominiums Phase I, N 48°-29'-47" W, a distance of 227.93 feet to a drill hole found in concrete.

THENCE, with the lines of the Harbourside on the Lagoon Condominiums Phase I and the lines of the Harbourside on the Lagoon Condominiums Phase II (Plat Cabinet B, Slide 64A) the following four courses:

S 41°-30'-17" W, a distance of 32.27 feet to a MAG nail set.

N 48°-30'-18" W, a distance of 43.73 feet to a 5/8 inch iron rod found.

S 41°-30'-13" W, a distance of 40.46 feet to a point in water.

S 23°-39'-34" W, a distance of 36.60 feet to a point in water at the TRUE POINT OF BEGINNING.

THENCE, with the lines of the Harbourside on the Lagoon Condominiums Phase I the following two courses:

S 23°-39'-34" W, a distance of 132.09 feet to a 5/8 inch iron rod found.

N 56°-20'-26" W, a distance of 74.67 feet to MAG nail set.

THENCE, N 19°-04'-30" E, a distance of 135.90 feet to a MAG nail set.

THENCE, with the south line of Harbourside on the Lagoon Phase II, S 55°-23'-06" E, a distance of 85.96 feet to the point of beginning, passing a MAG nail set at 83.96 feet.

Containing 0.241 acre.

The basis for bearings is the northeasterly line of Harbourside on the Lagoon Condominiums Phase I, being N 48°-29'-47" W, and all other bearings are from angles and distances measured in a field survey by Lee Surveying and Mapping Co., Inc. on June 25, 2002.

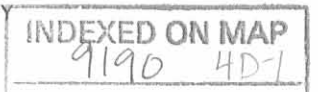


ORIGINAL STAMP IN GREEN

Description prepared by:

(Signature)
Jeffrey I. Lee
Professional Surveyor 6359
June 28, 2002

L-1134



Revised 7-10-02 01/02/04

Lee Surveying and Mapping Co., Inc.

Land Surveys • Topography • Subdivisions • Construction Layout

117 N. Madriver St.
Bellefontaine OH 43311



Phone: (937) 593-7335
Fax: (937) 593-7444

HARBOURSIDE ON THE LAGOON CONDOMINIUMS ADDITIONAL PROPERTY 0.710 ACRE EXHIBIT A-3

Lying in the Village of Russells Point, Section 36, Town 6, Range 8, Washington Township, Logan County, Ohio.

Being all of the remainder of the Indian Lake Harbourside Limited Partnership, an Ohio Limited Partnership, original 7.424 acre tract as deeded in Official Record 23, Page 93, and all of the remainder of the original 0.211 acre tract as deeded in Official Record 290, Page 240 of the Logan County Records of Deeds and being more particularly described as follows:

Beginning at a drill hole in concrete found on the west right-of-way of Chase Avenue (20 feet wide) on the northeast corner of the Harbourside on the Lagoon Condominiums Phase I, (Plat Cabinet B, Slide 30A).

THENCE, with the northerly lines of the Harbourside on the Lagoon Condominiums Phase I and Phase II, (Plat Cabinet B, Slide 64A) N 48°-29'-47" W, a distance of 349.20 feet to a MAG nail set in concrete, passing a drill hole found in concrete at 227.93 feet.

THENCE, with the west line of the said Phase II, S 39°-50'-57" W, a distance of 117.94 feet to a MAG nail set in concrete.

THENCE, S 19°-04'-30" W, a distance of 135.90 feet to a MAG nail set.

THENCE, with the north line of the Harbourside on the Lagoon Condominiums Phase I, N 56°-20'-26" W, a distance of 96.27 feet to a point in water, passing a 5/8 inch iron rod found at 86.42 feet and a chiseled "X" in concrete set on the sea wall at 90.73 feet.

THENCE, N 13°-21'-13" E, a distance of 41.02 feet to a point in water.

THENCE, with the east line of the Harbourside L.T.D. 0.016 acre tract (O.R. 494, Pg. 861) N 25°-30'-13" E, a distance of 65.59 feet to a 5/8 inch iron rod set, passing a chiseled "X" in concrete set at 10.58 feet.

THENCE, with the east line of the said 0.016 acre tract, N 29°-42'-13" E, a distance of 87.70 feet to a 5/8 inch iron rod set.

THENCE, with the lines of the American Society of Ephesus, Inc. an Ohio Non-Profit Corporation 0.234 acre tract (O.R. 290, Pg. 243), the following four courses:

S 61°-43'-13" E, a distance of 74.01 feet to a 5/8 inch iron rod found.

N 39°-50'-57" E, a distance of 91.88 feet to a 5/8 inch iron rod found.

S 50°-36'-38" E, a distance of 46.44 feet to a 5/8 inch iron rod found.

N 19°-26'-50" E, a distance of 7.36 feet to a 5/8 inch iron rod found.

THENCE, with the southwesterly lines of the Roderick J. Clark 0.552 acre tract (O.R. 347, Pg. 339), the following two (2) courses:

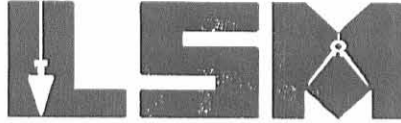
S 50°-27'-37" E, a distance of 101.10 feet to a 5/8 inch iron rod found.

S 50°-40'-47" E, a distance of 2.98 feet to a 5/8 inch iron rod found.

Lee Surveying and Mapping Co., Inc.

Land Surveys • Topography • Subdivisions • Construction Layout

117 N. Madriver St.
Bellefontaine OH 43311



Phone: (937) 593-7335
Fax: (937) 593-7444

THENCE, with the lines of the Point Harbor Inc., an Ohio Corporation, original 2.94 acre tract (O.R. 347, Pg. 341, Tract I), the following two (2) courses:

S 42°-15'-47" W, a distance of 29.20 feet to a 5/8 inch iron rod found.

S 48°-27'-54" E, a distance of 221.59 feet to a 5/8 inch iron rod found.

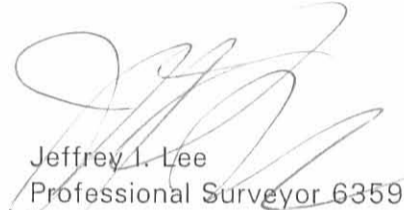
THENCE, with the west right-of-way of Chase Avenue, S 23°-44'-07" W, a distance of 20.99 feet to the point of beginning.

Containing 0.710 acre.

The basis for bearings is the northeasterly line of Harbourside on the Lagoon Condominiums Phase I, being N 48°-29'-47" W, and all other bearings are from angles and distances measured in a field survey by Lee Surveying and Mapping Co., Inc. on June 25, 2002.

Description prepared by:




Jeffrey I. Lee
Professional Surveyor 6359
June 28, 2002

L-1134