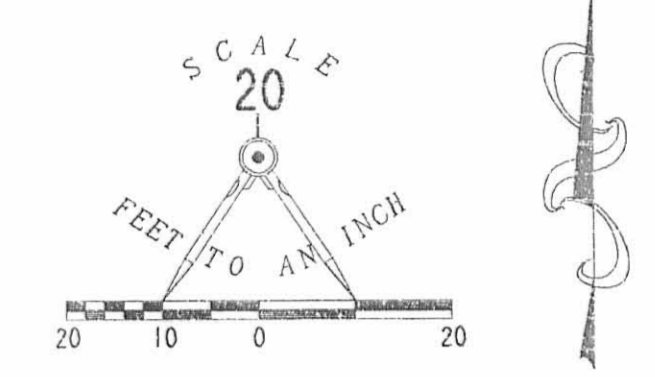
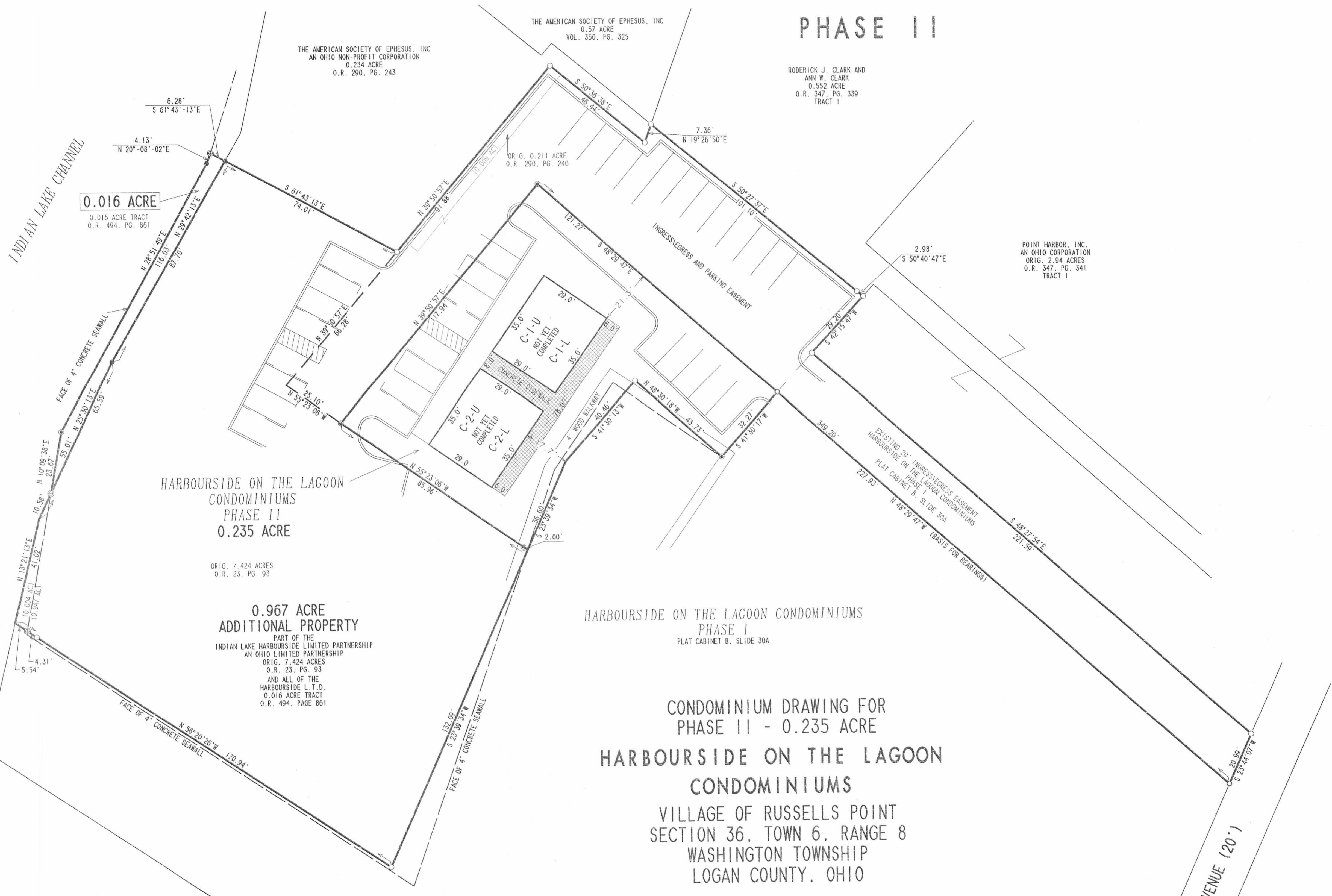


# HARBOURSIDE ON THE LAGOON CONDOMINIUMS

## PHASE II



- LEGEND**
- 5/8 INCH IRON ROD SET
  - 5/8 INCH IRON ROD FOUND
  - ⊙ MAG NAIL SET
  - ⊕ CHISELED 'X' IN CONCRETE SET
  - DRILL HOLE IN CONCRETE FOUND
  - ▨ LIMITED COMMON AREA

HARBOURSIDE ON THE LAGOON  
CONDOMINIUMS  
PHASE II  
0.235 ACRE

ORIG. 7.424 ACRES  
O.R. 23, PG. 93

0.967 ACRE  
ADDITIONAL PROPERTY  
PART OF THE  
INDIAN LAKE HARBOURSIDE LIMITED PARTNERSHIP  
AN OHIO LIMITED PARTNERSHIP  
ORIG. 7.424 ACRES  
O.R. 23, PG. 93  
AND ALL OF THE  
HARBOURSIDE L.T.D.  
0.016 ACRE TRACT  
O.R. 494, PAGE 861

HARBOURSIDE ON THE LAGOON CONDOMINIUMS  
PHASE I  
PLAT CABINET B, SLIDE 30A

CONDOMINIUM DRAWING FOR  
PHASE II - 0.235 ACRE  
HARBOURSIDE ON THE LAGOON  
CONDOMINIUMS  
VILLAGE OF RUSSELLS POINT  
SECTION 36, TOWN 6, RANGE 8  
WASHINGTON TOWNSHIP  
LOGAN COUNTY, OHIO

PART OF THE  
INDIAN LAKE HARBOURSIDE LIMITED PARTNERSHIP  
AN OHIO LIMITED PARTNERSHIP  
ORIGINAL 7.424 ACRES  
OFFICIAL RECORD 23, PAGE 93  
AND ORIGINAL 0.211 ACRE  
OFFICIAL RECORD 290, PAGE 240

WE DO HEREBY STATE THAT THESE DRAWINGS OF HARBOURSIDE ON THE LAGOON  
CONDOMINIUMS, PHASE II SHOW ALL BUILDINGS AS CONSTRUCTED.

*Michael W. Bow*  
MICHAEL W. BOW  
PROFESSIONAL ENGINEER 38860  
FEBRUARY 21, 2001

*Jeffrey I. Lee*  
JEFFREY I. LEE  
PROFESSIONAL SURVEYOR 6359  
FEBRUARY 21, 2001

THE M & K ENGINEERING CO.  
1691 T.R. 31 NORTH  
BELLEFONTAINE, OHIO 43311  
(937) 592-2697

LEE SURVEYING AND MAPPING CO., INC.  
117 NORTH MADRIVER STREET  
BELLEFONTAINE, OHIO, 43311  
(937) 593-7335



APPROVED BY THE VILLAGE OF RUSSELLS POINT  
PLANNING COMMISSION  
THIS 31<sup>ST</sup> DAY OF July, 2001

*John J. Gaudin*  
PRES., PLANNING COMMISSION

PLAT CHECKED *Jon C. Hines* 7-31-01

DESCRIPTION CHECKED *Suzanne M. Vesting* 7-31-01

TRANSFERRED THIS 1<sup>ST</sup> DAY OF August, 2001

*Michael E. Gowan*  
AUDITOR, LOGAN COUNTY, OHIO

RECORDED IN PLAT CABINET B, SLIDE 64A-64B  
RECEIVED FOR RECORD AT 8:49 O'CLOCK A.M.

THIS 1<sup>ST</sup> DAY OF August, 2001

*Linda Hanson*  
RECORDER, LOGAN COUNTY, OHIO

INDIAN LAKE SANITARY SEWER DISTRICT

COPYRIGHT 2001 BY:  
LEE SURVEYING & MAPPING CO., INC.  
117 North Madriver Street  
Bellefontaine, Ohio 43311  
(937) 593-7335

D-396 HRBRSD2  
HRBRSD.DAT  
PRINTED: JULY 20, 2001

2 WORKING DAYS  
BEFORE YOU DIG  
CALL TOLL FREE 800-362-2764  
OHIO UTILITIES PROTECTION SERVICE.

200/0007473

PREPARED BY:

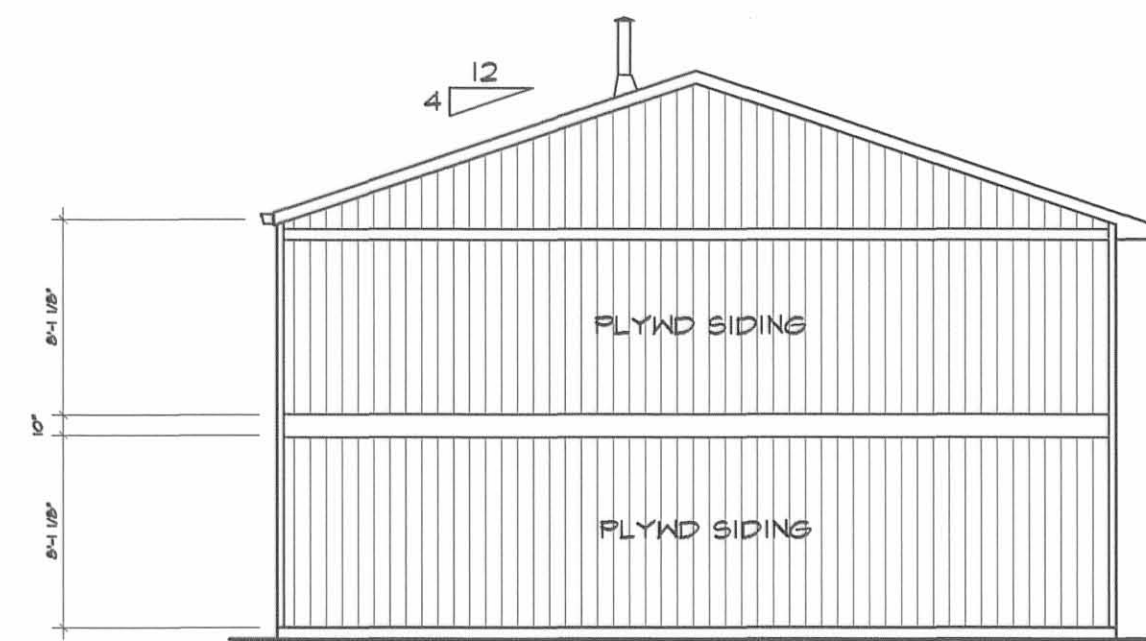
*Michael W. Bow*  
 MICHAEL W. BOW, P.E.  
 THE M & K ENGINEERING CO.

6/28/2001  
 DATE



**WATER SIDE ELEVATION FRONT**

SCALE: 1/8" = 1'-0"



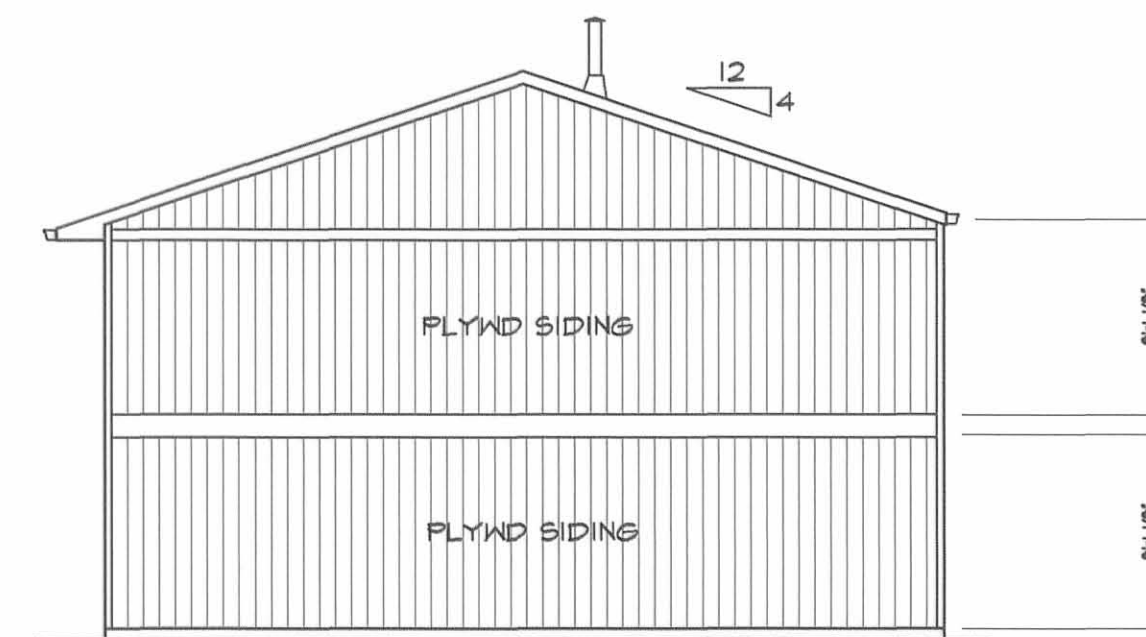
**SIDE ELEV RIGHT**

SCALE: 1/8" = 1'-0"



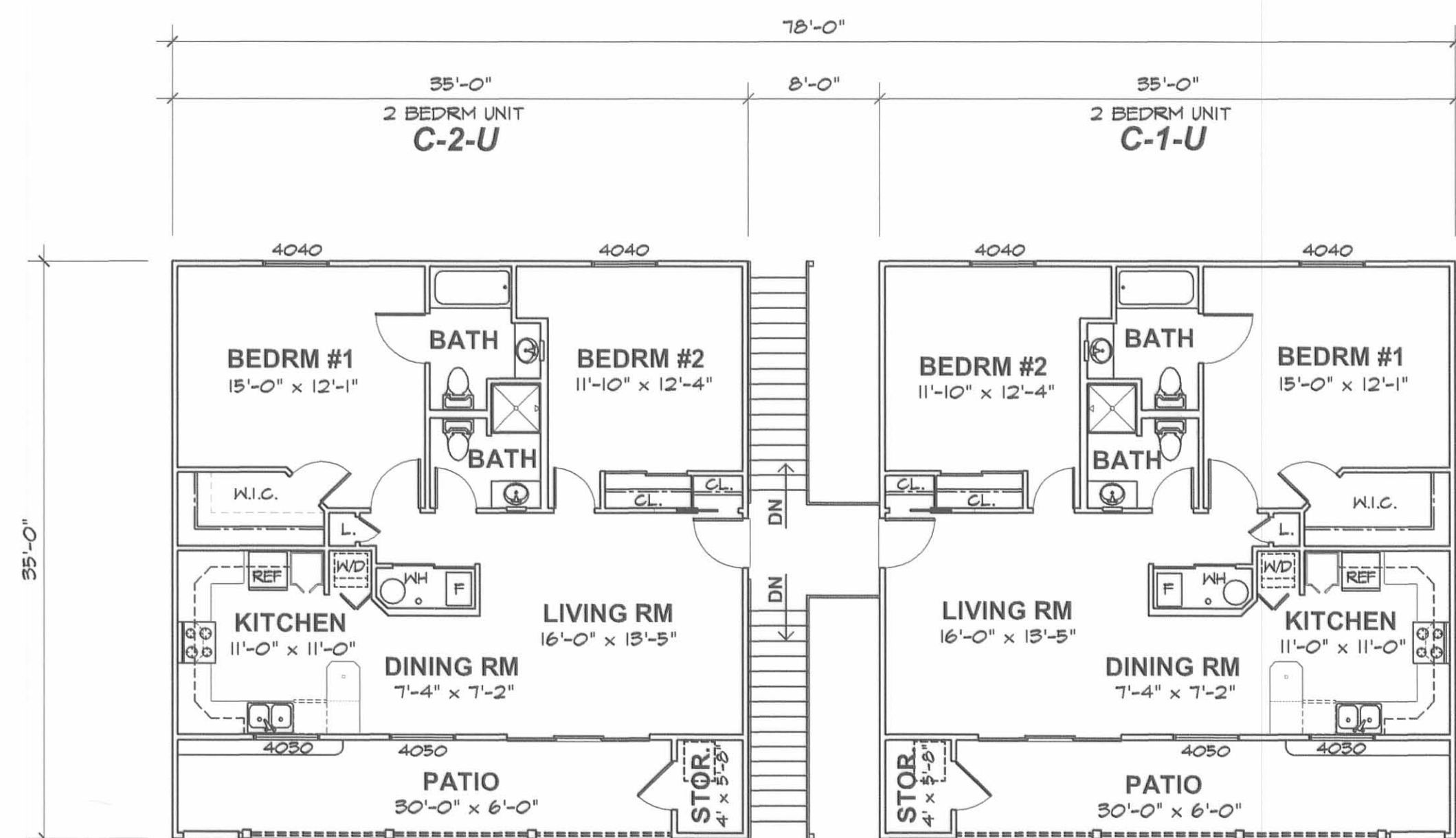
**PARKING SIDE ELEVATION REAR**

SCALE: 1/8" = 1'-0"



**SIDE ELEV LEFT**

SCALE: 1/8" = 1'-0"

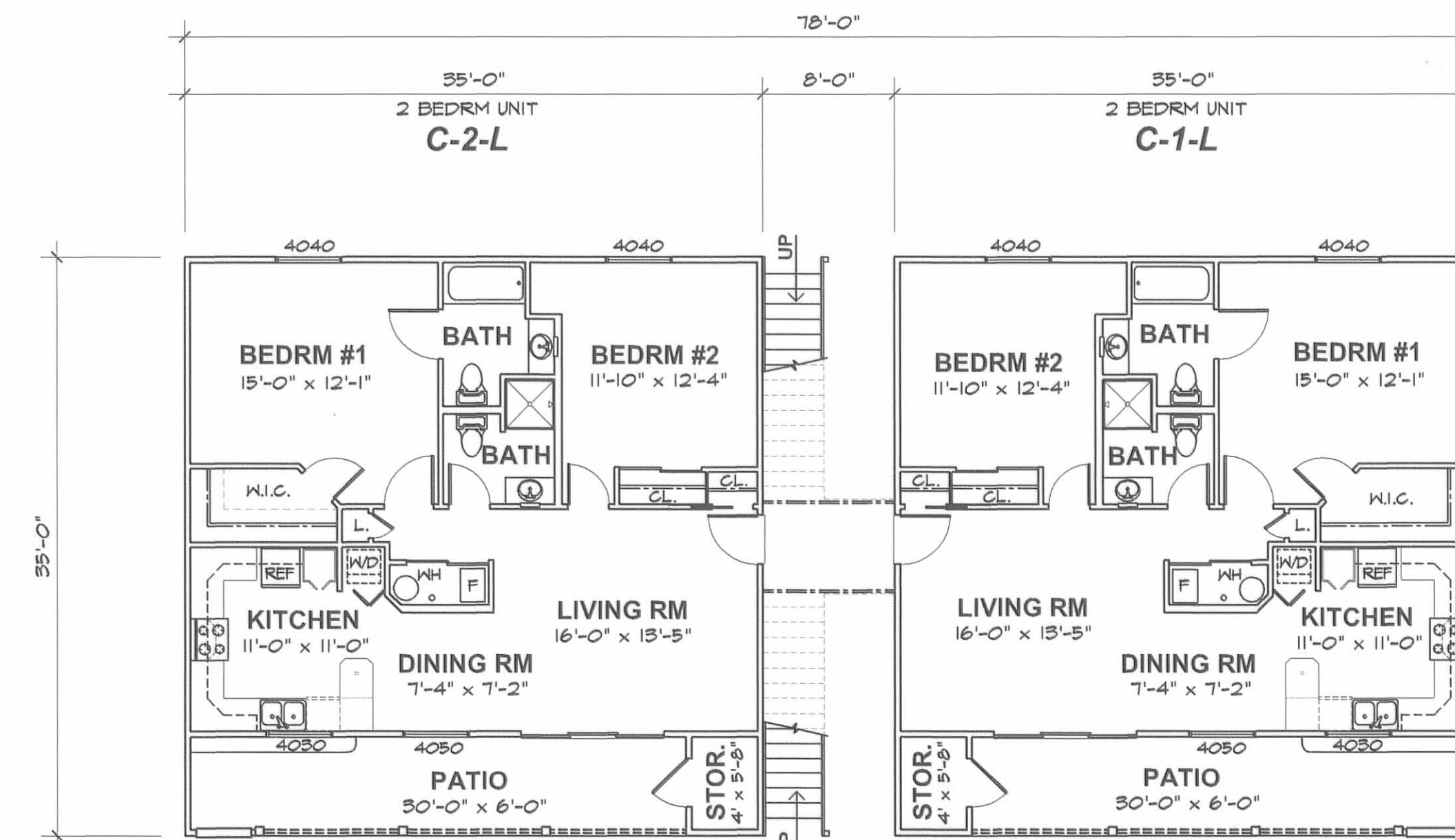


**SECOND FLOOR PLAN**

SCALE: 1/8" = 1'-0"

UNIT DESIGNATION DESCRIPTION:

C-1-U = BUILDING "C"  
 CONDO #1  
 UPPER LEVEL



**FIRST FLOOR PLAN**

SCALE: 1/8" = 1'-0"

UNIT DESIGNATION DESCRIPTION:

C-1-L = BUILDING "C"  
 CONDO #1  
 LOWER LEVEL

REC'D 11-23-01 SMY DL

# Lee Surveying and Mapping Co., Inc.

Land Surveys • Topography • Subdivisions • Construction Layout

117 N. Madriver St.  
Bellefontaine OH 43311



Phone: (937) 593-7335  
Fax: (937) 593-7444

## HARBOURSIDE ON THE LAGOON CONDOMINIUMS PHASE II 0.235 ACRE

### EXHIBIT A-1

Lying in the Village of Russells Point, Section 36, Town 6, Range 8, Washington Township, Logan County, Ohio.

Being out of the remainder of the Indian Lake Harbourside Limited Partnership, an Ohio Limited Partnership, original 7.424 acre tract as deeded in Official Record 23, Page 93 of the Logan County Records of Deeds and being more particularly described as follows:

Beginning at a drill hole in concrete found on the west right-of-way of Chase Avenue (20 feet wide) on the northeast corner of the Harbourside on the Lagoon Condominiums Phase I, (Plat Cabinet B, Slide 30A).

THENCE, with a northerly line of the Harbourside on the Lagoon Condominiums Phase I, N 48°-29'-47" W, a distance of 227.93 feet to a drill hole found in concrete at the TRUE POINT OF BEGINNING.

THENCE, with the lines of the Harbourside on the Lagoon Condominiums Phase I the following four courses:

S 41°-30'-17" W, a distance of 32.27 feet to a MAG nail set.

N 48°-30'-18" W, a distance of 43.73 feet to a 5/8 inch iron rod found.

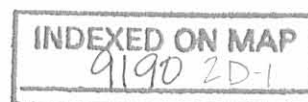
S 41°-30'-13" W, a distance of 40.46 feet to a point in water.

S 23°-39'-34" W, a distance of 36.60 feet to a point in water.

THENCE, N 55°-23'-06" W, a distance of 85.96 feet to a MAG nail set in concrete, passing a MAG nail set at 83.96 feet.

THENCE, N 39°-50'-57" E, a distance of 117.94 feet to a MAG nail set in concrete.

THENCE, S 48°-29'-47" E, a distance of 121.27 feet to the point of beginning.



# Lee Surveying and Mapping Co., Inc.

Land Surveys • Topography • Subdivisions • Construction Layout

117 N. Madriver St.  
Bellefontaine OH 43311



Phone: (937) 593-7335  
Fax: (937) 593-7444

Containing 0.235 acre.

The basis for bearings is the northeasterly line of Harbourside on the Lagoon Condominiums Phase I, being N 48°-29'-47" W, and all other bearings are from angles and distances measured in a field survey by Lee Surveying and Mapping Co., Inc. on February 21, 2001.

Description prepared by:

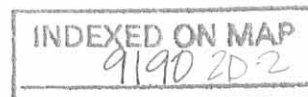


ORIGINAL STAMP IN GREEN

A handwritten signature in black ink, appearing to be 'J. Lee', written over the printed name and title.

Jeffrey I. Lee  
Professional Surveyor 6359  
February 26, 2001  
Revised June 25, 2001

L-1134



REC'D 7-23-01 SMY/OL

# Lee Surveying and Mapping Co., Inc.

Land Surveys • Topography • Subdivisions • Construction Layout

117 N. Madriver St.  
Bellefontaine OH 43311



Phone: (937) 593-7335  
Fax: (937) 593-7444

## HARBOURSIDE ON THE LAGOON CONDOMINIUMS PHASE II INGRESS\EGRESS AND PARKING EASEMENT

### EXHIBIT A-2

Lying in the Village of Russells Point, Section 36, Town 6, Range 8, Washington Township, Logan County, Ohio.

Being ingress\egress and parking easement over the remainder of the Indian Lake Harbourside Limited Partnership, an Ohio Limited Partnership, original 7.424 acre tract as deeded in Official Record 23, Page 93, and all of the 0.211 acre tract as deeded in Official Record 290, Page 240 of the Logan County Records of Deeds and being more particularly described as follows:

Beginning at a drill hole in concrete found on the west right-of-way of Chase Avenue (20 feet wide) on the northeast corner of the Harbourside on the Lagoon Condominiums Phase I, (Plat Cabinet B, Slide 30A).

THENCE, with a northerly line and northerly line extended of the Harbourside on the Lagoon Condominiums Phase I, N 48°-29'-47" W, a distance of 349.20 feet to a MAG nail set in concrete, passing a drill hole found in concrete at 227.93 feet.

THENCE, S 39°-50'-57" W, a distance of 117.94 feet to a MAG nail set in concrete.

THENCE, N 55°-23'-06" W, a distance of 25.10 feet to a point.

THENCE, N 39°-50'-57" E, a distance of 66.28 feet to a 5/8 inch iron rod found.

THENCE, with the lines of the American Society of Ephesus, Inc. an Ohio Non-Profit Corporation 0.234 acre tract, (O.R. 290, Pg. 243), the following three courses:

N 39°-50'-57" E, a distance of 91.88 feet to a 5/8 inch iron rod found.

S 50°-36'-38" E, a distance of 46.44 feet to a 5/8 inch iron rod found.

N 19°-26'-50" E, a distance of 7.36 feet to a 5/8 inch iron rod found.

THENCE, with the southwesterly lines of the Roderick J. Clark 0.552 acre tract, (O.R. 347, Pg. 339), the following two (2) courses:

INDEXED ON MAP  
9190 2D-3

# Lee Surveying and Mapping Co., Inc.

Land Surveys • Topography • Subdivisions • Construction Layout

117 N. Madriver St.  
Bellefontaine OH 43311



Phone: (937) 593-7335  
Fax: (937) 593-7444

S 50°-27'-37" E, a distance of 101.10 feet to a 5/8 inch iron rod found.

S 50°-40'-47" E, a distance of 2.98 feet to a 5/8 inch iron rod found.

THENCE, with the lines of the Point Harbor Inc., an Ohio Corporation, original 2.94 acre tract, (O.R. 347, Pg. 341, Tract I), the following two (2) courses:

S 42°-15'-47" W, a distance of 29.20 feet to a 5/8 inch iron rod found.

S 48°-27'-54" E, a distance of 221.59 feet to a 5/8 inch iron rod found.

THENCE, with the west right-of-way of Chase Avenue, S 23°-44'-07" W, a distance of 20.99 feet to the point of beginning.

The basis for bearings is the northeasterly line of Harbourside on the Lagoon Condominiums Phase I, being N 48°-29'-47" W, and all other bearings are from angles and distances measured in a field survey by Lee Surveying and Mapping Co., Inc. on February 21, 2001.



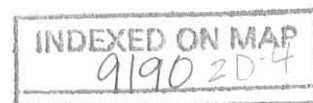
ORIGINAL STAMP IN GREEN

Description prepared by:

A handwritten signature in black ink, appearing to read 'J. Lee', written over the typed name.

Jeffrey I. Lee  
Professional Surveyor 6359  
February 26, 2001  
Revised June 25, 2001

L-1134



# Lee Surveying and Mapping Co., Inc.

Land Surveys • Topography • Subdivisions • Construction Layout

117 N. Madriver St.  
Bellefontaine OH 43311



Phone: (937) 593-7335  
Fax: (937) 593-7444

## HARBOURSIDE ON THE LAGOON CONDOMINIUMS ADDITIONAL PROPERTY 0.951 ACRE EXHIBIT A-3

Lying in the Village of Russells Point, Section 36, Town 6, Range 8, Washington Township, Logan County, Ohio.

Being out of the remainder of the Indian Lake Harbourside Limited Partnership, an Ohio Limited Partnership, original 7.424 acre tract as deeded in Official Record 23, Page 93, and all of the 0.211 acre tract as deeded in Official Record 290, Page 240 of the Logan County Records of Deeds and being more particularly described as follows:

Beginning at a drill hole in concrete found on the west right-of-way of Chase Avenue (20 feet wide) on the northeast corner of the Harbourside on the Lagoon Condominiums Phase I, (Plat Cabinet B, Slide 30A).

THENCE, with a northerly line and northerly line extended of the Harbourside on the Lagoon Condominiums Phase I, N 48°-29'-47" W, a distance of 349.20 feet to a MAG nail set in concrete, passing a drill hole found in concrete at 227.93 feet.

THENCE, S 39°-50'-57" W, a distance of 117.94 feet to a MAG nail set in concrete.

THENCE, S 55°-23'-06" E, a distance of 85.96 feet to a point in the water, passing a MAG nail set at 83.96 feet.

THENCE, with the lines of the Harbourside on the Lagoon Condominiums Phase I the following two courses:

S 23°-39'-34" W, a distance of 132.09 feet to a 5/8 inch iron rod found.

N 56°-20'-26" W, a distance of 170.94 feet to a point in water, passing a 5/8 inch iron rod found at 161.09 feet and a chiseled "X" in concrete set on the sea wall at 165.40 feet.

THENCE, N 13°-21'-13" E, a distance of 41.02 feet to a point in water.

THENCE, N 25°-30'-13" E, a distance of 65.59 feet to a 5/8 inch iron rod set, passing a chiseled "X" in concrete set at 10.58 feet.

THENCE, N 29°-42'-13" E, a distance of 87.70 feet to a 5/8 inch iron rod set.

INDEXED ON MAP  
9190 20-5

# Lee Surveying and Mapping Co., Inc.

Land Surveys • Topography • Subdivisions • Construction Layout

117 N. Madriver St.  
Bellefontaine OH 43311



Phone: (937) 593-7335  
Fax: (937) 593-7444

THENCE, with the lines of the American Society of Ephesus, Inc. an Ohio Non-Profit Corporation 0.234 acre tract (O.R. 290, Pg. 243), the following four courses:

S 61°-43'-13" E, a distance of 74.01 feet to a 5/8 inch iron rod found.

N 39°-50'-57" E, a distance of 91.88 feet to a 5/8 inch iron rod found.

S 50°-36'-38" E, a distance of 46.44 feet to a 5/8 inch iron rod found.

N 19°-26'-50" E, a distance of 7.36 feet to a 5/8 inch iron rod found.

THENCE, with the southwesterly lines of the Roderick J. Clark 0.552 acre tract (O.R. 347, Pg. 339), the following two (2) courses:

S 50°-27'-37" E, a distance of 101.10 feet to a 5/8 inch iron rod found.

S 50°-40'-47" E, a distance of 2.98 feet to a 5/8 inch iron rod found.

THENCE, with the lines of the Point Harbor Inc., an Ohio Corporation, original 2.94 acre tract (O.R. 347, Pg. 341, Tract I), the following two (2) courses:

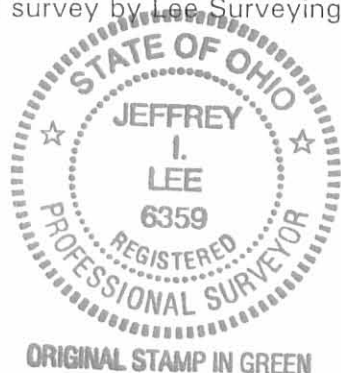
S 42°-15'-47" W, a distance of 29.20 feet to a 5/8 inch iron rod found.

S 48°-27'-54" E, a distance of 221.59 feet to a 5/8 inch iron rod found.

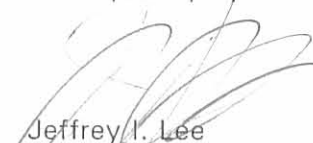
THENCE, with the west right-of-way of Chase Avenue, S 23°-44'-07" W, a distance of 20.99 feet to the point of beginning.

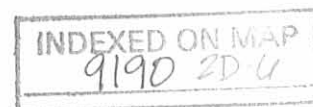
Containing 0.951 acre.

The basis for bearings is the northeasterly line of Harbourside on the Lagoon Condominiums Phase I, being N 48°-29'-47" W, and all other bearings are from angles and distances measured in a field survey by Lee Surveying and Mapping Co., Inc. on February 21, 2001.



Description prepared by:

  
Jeffrey I. Lee  
Professional Surveyor 6359  
February 26, 2001  
Revised June 25, 2001



L-1134