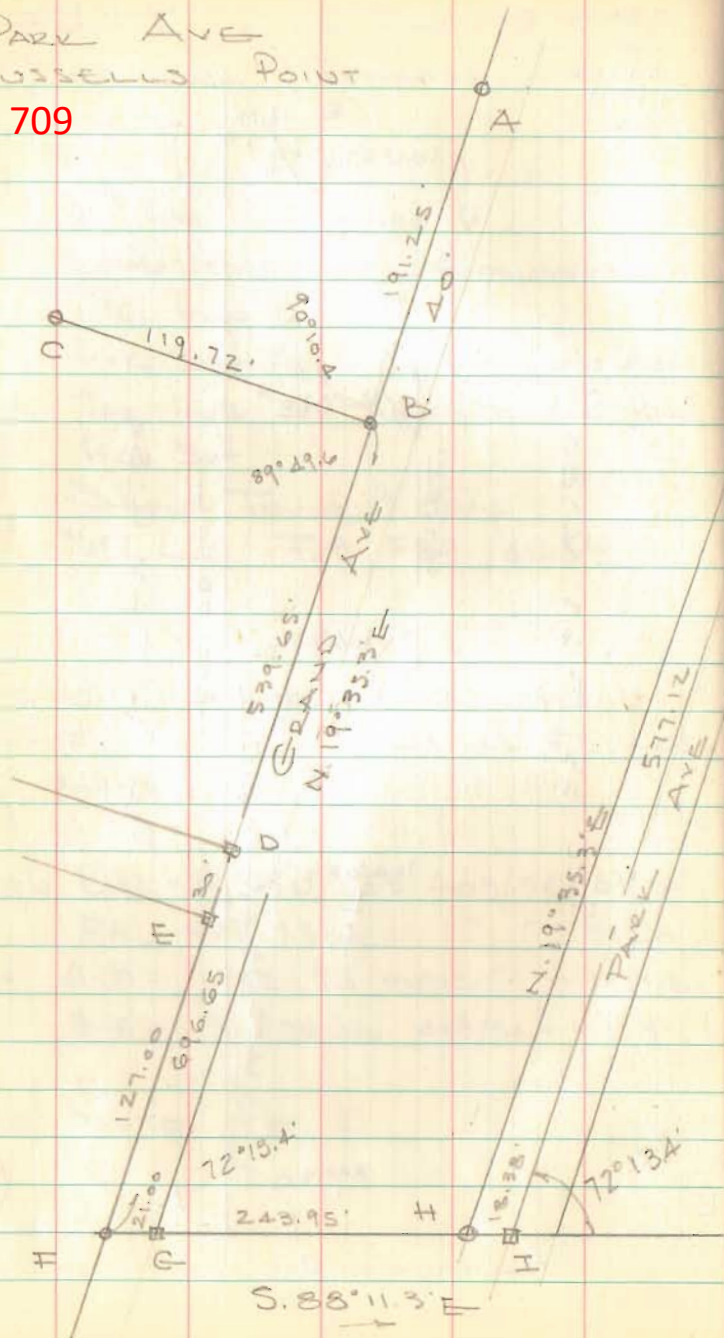


Park Ave
Russell Point

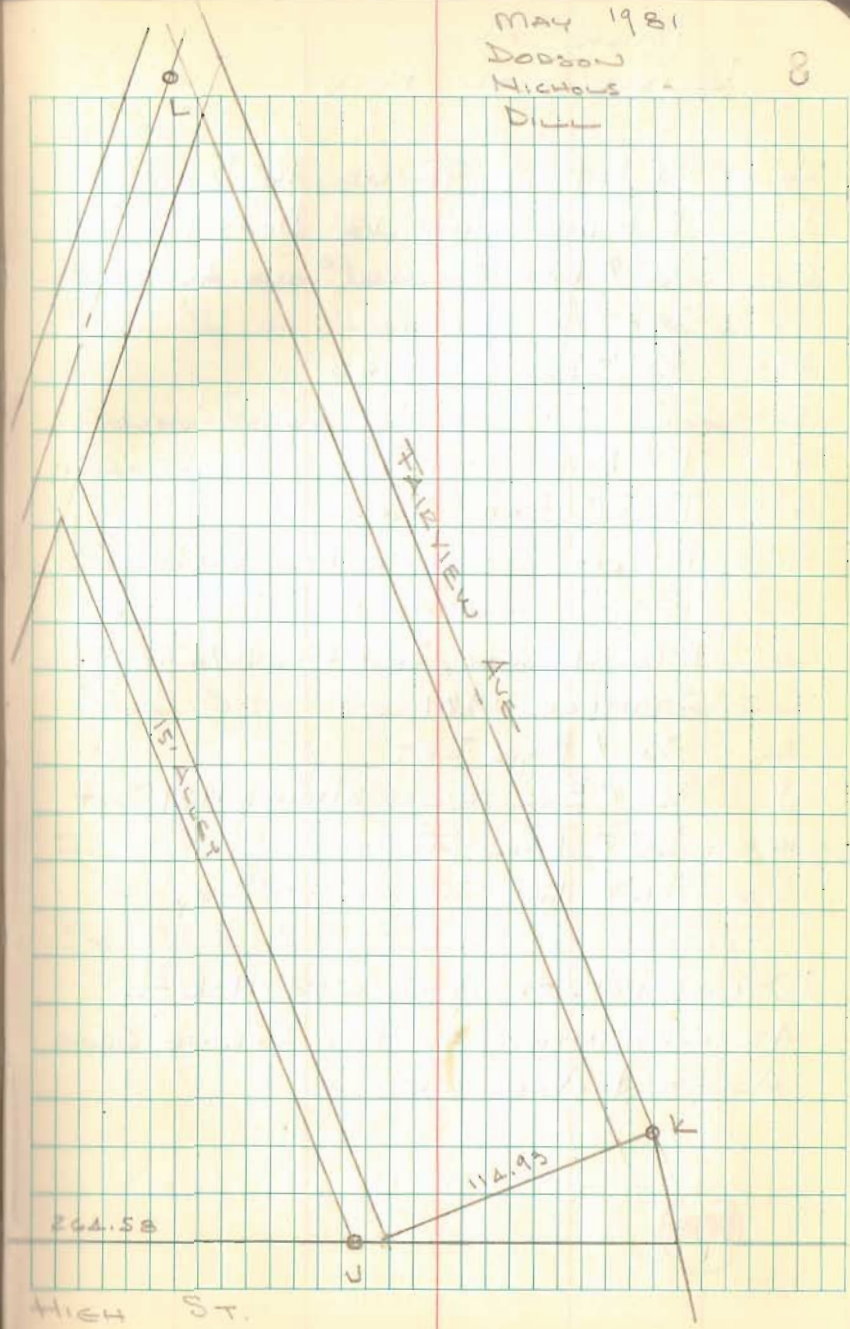
FB 709



MAY 1981

DODSON
NICHOLS
DILL

8



Park Ave
Russell's Point

FB 709

- A = $3/2$ " ϕ BAR FOUND 16" Deep
B = 1" PIPE FOUND 12" Deep (well Point)
C = $3/2$ " ϕ BAR FOUND (SAME AS "C" BK
705/3
D = $3/2$ " ϕ BAR FOUND
E = " " "
F = 1" ϕ BAR SET
G = 1" x $3/2$ " BAR FOUND
H = 1" PIPE FOUND 10" Deep (well
POINT SAME AS "B" - REMOVED
PIPE - PLACED $3/2$ " ϕ BAR W/CAP
STAMPED 1981
I = $3/2$ " ϕ BAR SET
J = $3/2$ " ϕ BAR W/CAP STAMPED 1981 SET
K = $3/2$ " ϕ BAR FOUND
L = $3/2$ " ϕ BAR FOUND 9" Deep

USED POINTS A-B-C-G-H-K-L
AS ORIGINAL AS PER SPRING GONG
ALLOT & ADDITION

MAY 1981

9

Calc. LOCATION OF J FROM K
LINE G-H-I OR FOR LINE & DIST.
SET F ON LINE G-J 21.00 W. OF G
SET I ON LINE G-J 18.38 E. OF H

MOVED POINTS B-D-E ON LINE
"A-F"

REMOVED 1" ϕ BAR @ "D" F.B. 705/3

SET 2/W STAKES ON W. LINE OF
PARK ST 17 1/2 LEFT OF LINE "I-L"

FOR REGRADATION USED PLAT DIST X 0.99936

SEE RUSSELL POINT STREETS
FILE FOR CALCULATIONS.

8979