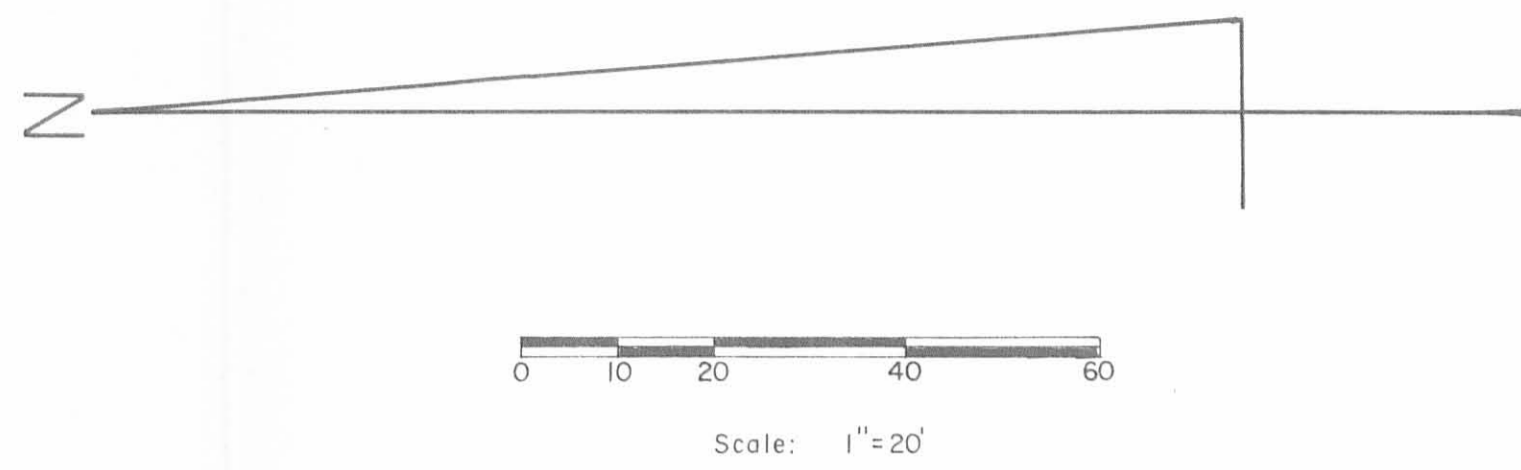
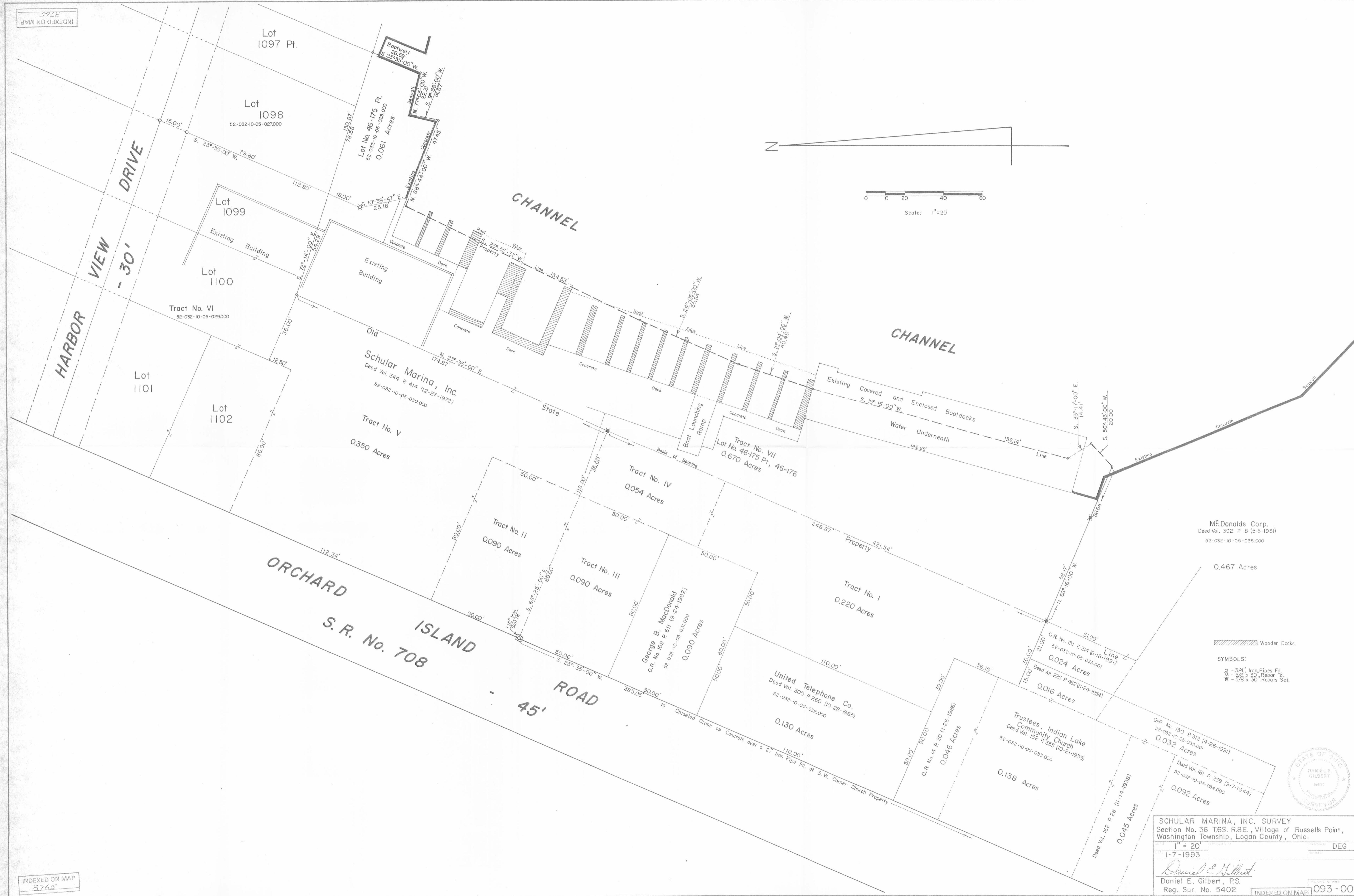


INDEXED ON MAP
8765

INDEXED ON MAP
8765



McDonalds Corp.
Deed Vol. 392 P. 18 (5-5-1981)
52-032-10-05-035.000

0.467 Acres

SYMBOLS:
 [Hatched Box] Wooden Docks.
 ○ - 3/4" Iron Pipes Fd.
 ⊕ - 5/8" x 30' Rebar Fd.
 ✕ - 5/8" x 30' Rebars Set.



SCHULAR MARINA, INC. SURVEY
 Section No. 36 T6S. R8E., Village of Russells Point,
 Washington Township, Logan County, Ohio.
 1" = 20'
 1-7-1993
 Daniel E. Gilbert, P.S.
 Reg. Sur. No. 5402

INDEXED ON MAP
8765 IP 093-001