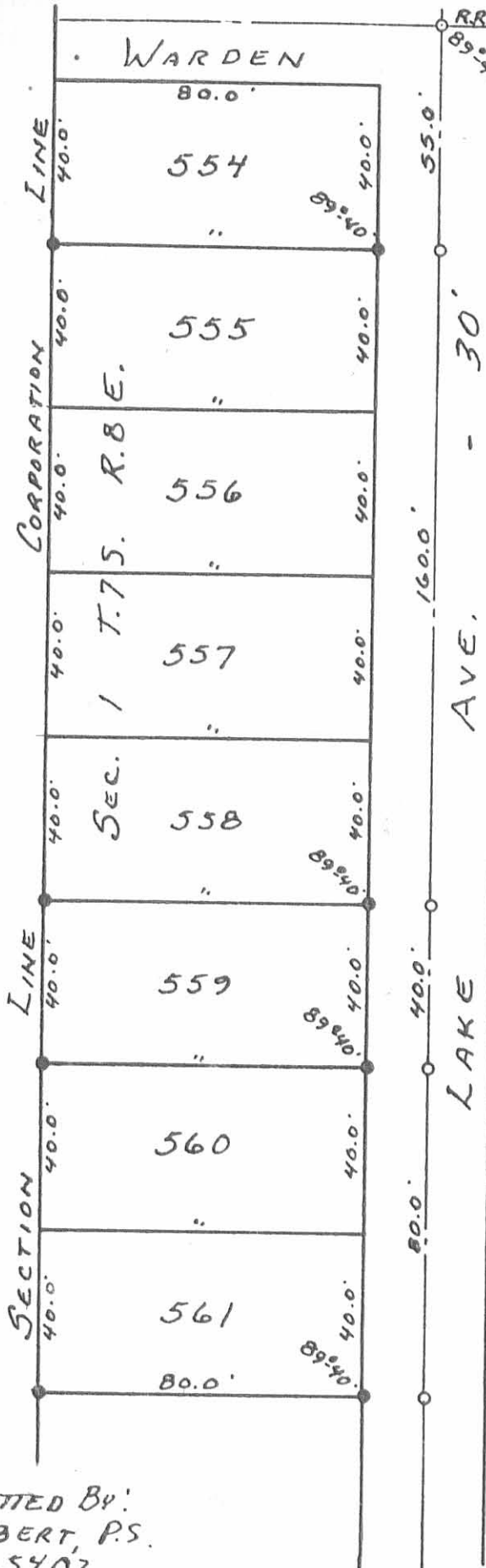


SEC. 2 T.7S. R.8E.



6644 IP

INDEXED ON MAP

- - R.R. SPIKES SET.
- - 5/8" X 30" REBARS SET.

TACKETT SURVEY
 LOTS 559, 560, 561
 VILLAGE OF RUSSELLS POINT
 SECTION 1 T.7S. R.8E.
 WASHINGTON TOWNSHIP
 LOGAN COUNTY, OHIO
 JULY 18, 1981

SCALE: 1" = 40'

SURVEYED AND PLATTED BY:
 DANIEL E. GILBERT, P.S.
 REG. SUR. NO. 5402
 1041 N. MAIN ST.
 BELLEFONTAINE, OHIO 43311