

NICHOLSON'S 1ST ADD.
 RUSSELLS POINT, OHIO

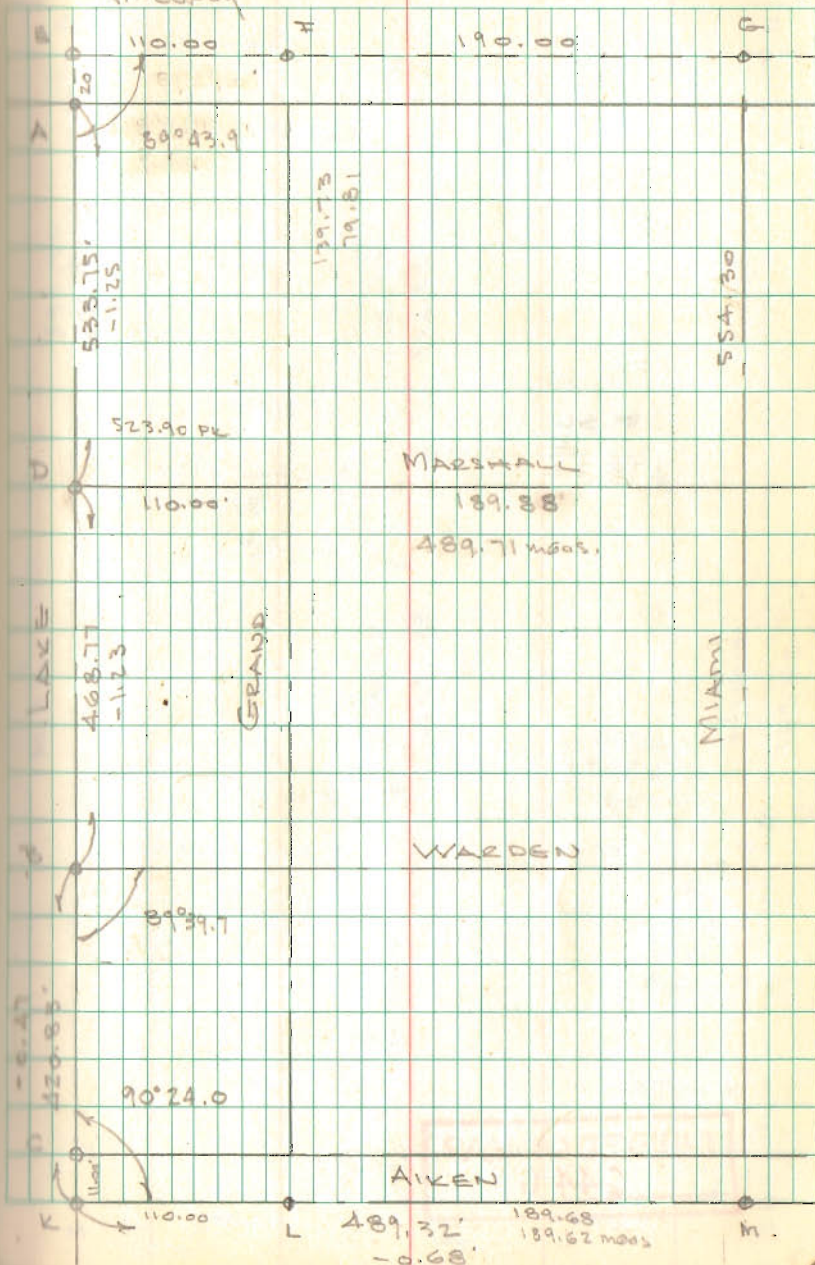
- A = $\frac{3}{4}$ " pipe found Bend - Replaced with 1" pipe
- B = $\frac{1}{2}$ " pipe found 12" deep
- C = $\frac{1}{2}$ " pipe found 8" deep
- D = Old very rusted $\frac{3}{4}$ " pipe found replaced with 1" pipe 36" long
- E = R.R. Spk. Set 20.00' N. of A on line A-C
- F = R.R. Spk Set
- G = " " "
- H = " " "
- I = " " "
- J = $\frac{3}{4}$ " Pipe Found
- K = $\frac{5}{8}$ " Bar Set 11.00' S. of C on line A-C
- L = R.R. Spk Set
- M = " " "
- N = " " "
- O = Harrow tooth Set E. WARDEN & Center
- P = R.R. Spk Set
- Q = " " " "
- R = " " " "

INDEXED ON MAP
 6446

Dodson
 Art's
 McCurdy

5/6/73

02



$$\begin{array}{r} 189.86 \\ \hline 379.72 \end{array}$$

INDEXED ON MAP
 6446

