



6 - 3/8" IRON BARS FD. OR SET.

REFERENCE:
 COON ALLOT. 110.2.
 PLAT BOOK 7 VOL. D. PAGE 60.
 ENGINEERS FILE J-107.

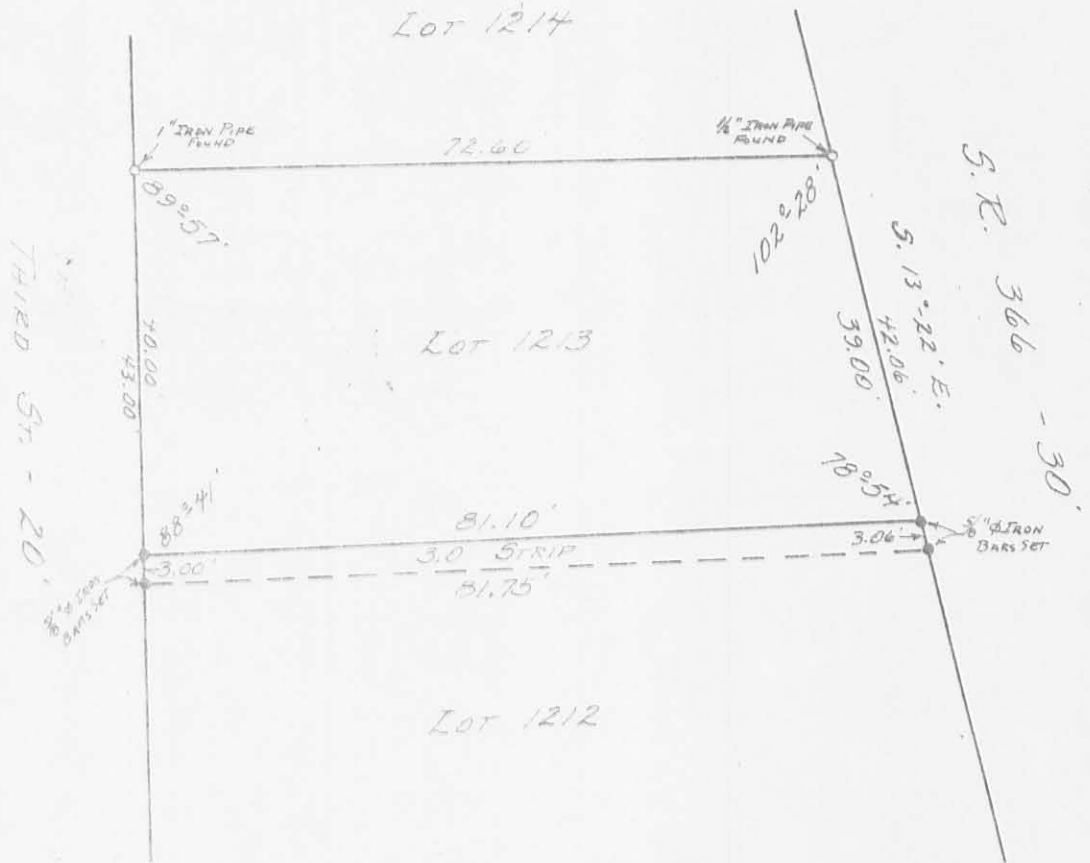


SURVEYED AND PLATED BY:
 DANIEL E. GILBERT, P.S.
 EBC SUR. NO. 5402
 1041 N. MAIN ST.
 BELLEFONTAINE, OHIO 43311

LOT 1212 SURVEY
 RUSSELLS POINT CORPORATION
 WASHINGTON TOWNSHIP
 LOGAN COUNTY, OHIO
 SEPTEMBER 25, 1971

SCALE: 1" = 20'

4804 IP



REFERENCE:

COON ALLOT. NO. 2
FLAT BOOK 4 VOL. D. PAGE 60
ENGINEER'S FILE J-107

SURVEYED AND PLATTED BY:
DANIEL E. GILBERT, P.S.
REC SUR. NO. 5402
428 N. MADRIVER ST.
BELLEFONTAINE, OHIO 43311

LOT 1213 & 1212 PT. SURVEY
RUSSELLS POINT CORPORATION
WASHINGTON TOWNSHIP
LOGAN COUNTY, OHIO
MAY 1, 1971

SCALE: 1" = 20'

4804
28