

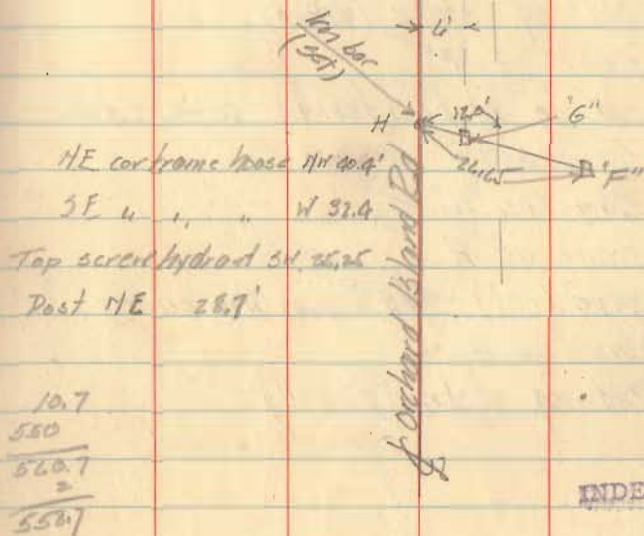
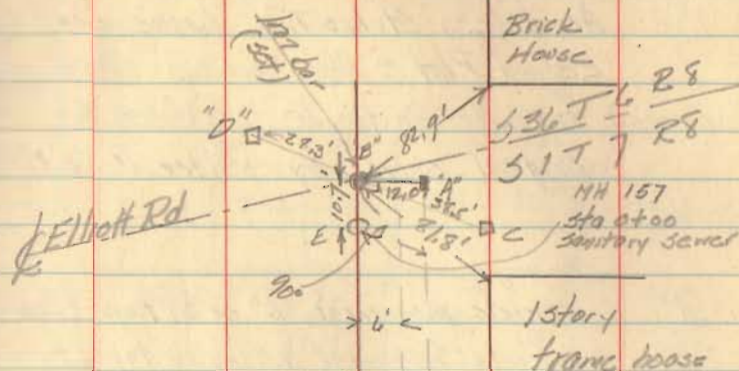
Resetting centers of  
orchard Island Road in Russells  
Paradise Ohio

For original witnesses set by CA1  
see Logan County Engineer's Field  
Book 621 Page 52 (copy of  
resetting notes same book page 80)

- "A" sq. iron bar (found) 12' of it L's  
to Orchard Arc from  
original location of  
E of Orchard Collection  
see book 621 Page 52
- B  $\frac{3}{4}$ " x 24" of iron bar (reset) from witness  
stakes "A" - "C" & "D"
- C sq. hole in ground accepted as location  
of witness stake position checks
- D sq. stake with tack accepted as witness  
stake - position checks
- E MH 157 top
- F stake (found) accepted as witness stake
- G stake (found) accepted as sta 5+50  
San sewer survey 621-52
- H  $\frac{3}{4}$ " x 18" of iron bar (set) 26.65' from "F"  
through "G" 621-52  
 $10.7 + 550 - 2 = 558.7$  50' section line or E  
of Orchard Collection 621-52

CA Hschoop  
CA Miller  
FH Howell

11/4/40 101



4478

INDEXED ON MAP