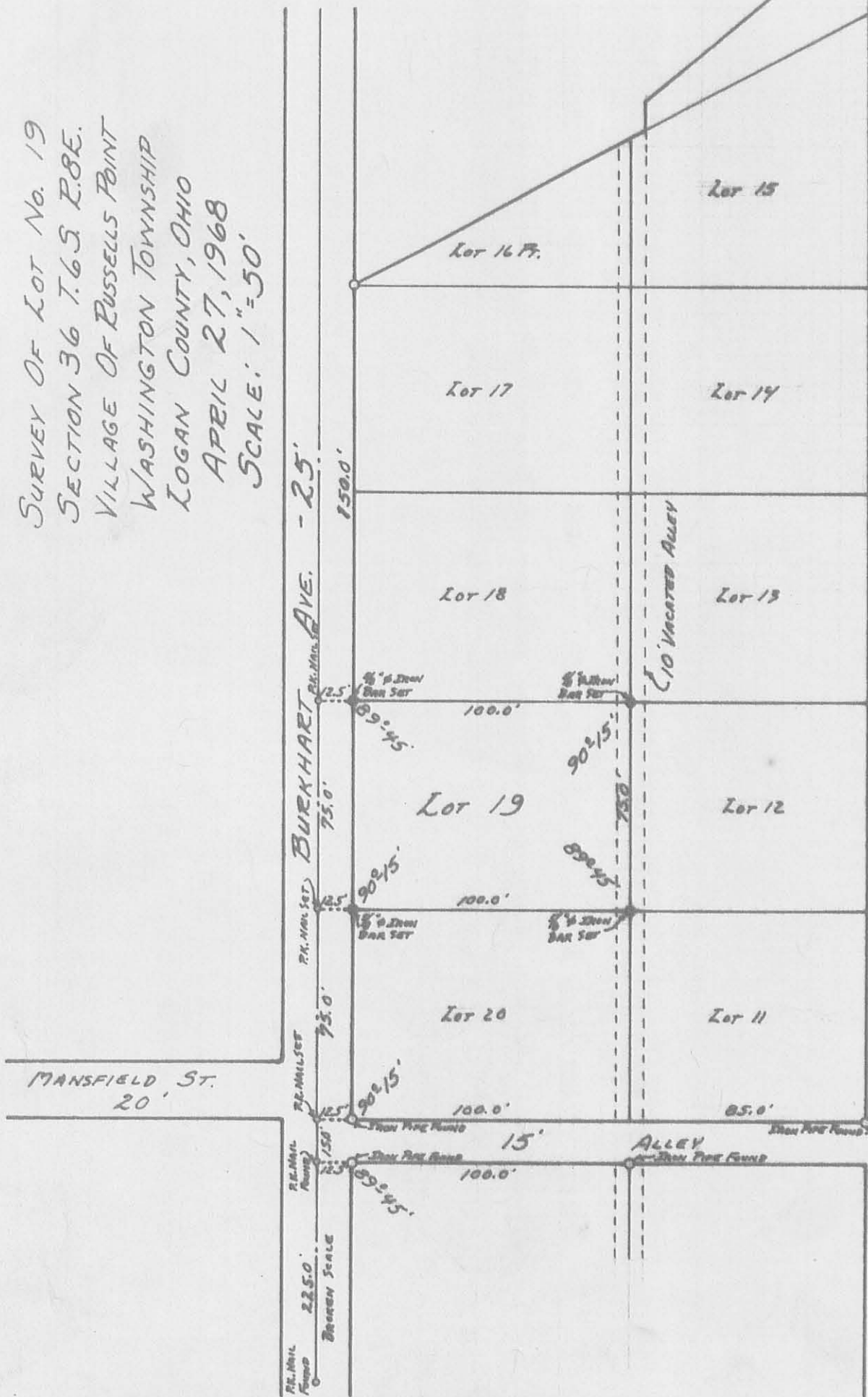


SURVEY OF LOT No. 19
 SECTION 36 T.6S R.8E.
 VILLAGE OF RUSSELLS POINT
 WASHINGTON TOWNSHIP
 LOGAN COUNTY, OHIO
 APRIL 27, 1968
 SCALE: 1"=50'



S. R. No. 708

4215 1P

INDEXED ON MAP
 SURVEYED AND PLATTED BY:
 DANIEL E. GILBERT
 REG. SUR. No. 5402