

John At  
 H Mosier Columbus, O. - 51 E. College St  
 allotment near Russell's Point O.

STATION.	ALIGNMENT.	DEFLECTION.	REMARKS
(1) Start at S E c 12.	6-14.5, 94.5		
2	N-22.4-239.429-444-614.4 in miles		
3	N-132.25-147.25-272.5-294.5-499.5 5' 11" x 4'		
4	S 71-13	N-40-80-127-157-177-217-257	
5	S E c 4	N-40-80-127	
6	S E c 4	N-198-206-351-359-504 510 653 700	
7	S E c 4	N-198-206-351-359-504 510 653 700	

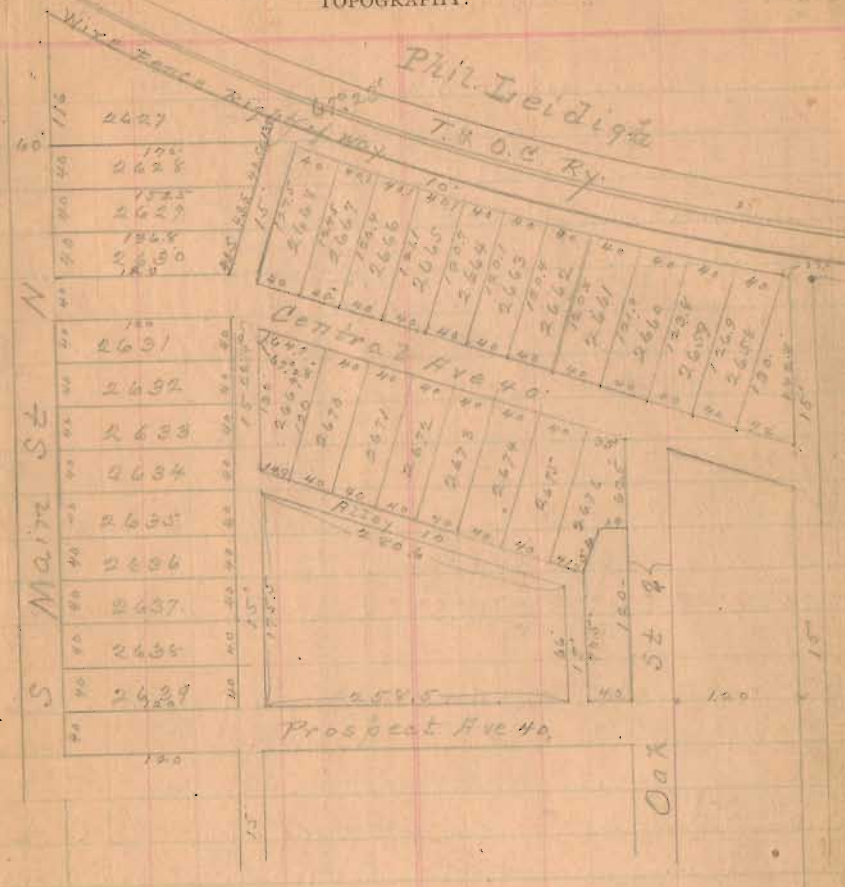


(10) Start at S E c 4-294.5 (11) 90-194-206-371-379-543-549-973  
 (12) Start at S E c 4-294.5 (13) 90-194-206-371-379-543-549-973  
 (14) Start at S E c 4-294.5 (15) 90-194-206-371-379-543-549-973

Robert Titus - 1 day  
 J. M. Middleton 1/2 d  
 No. 13 is 208 now  
 " 14 " 209 "  
 " 15 " 210 "  
 " 16 " 211 "  
 " 17 " 212 "  
 " 18 " 213 "

30  
 INDEXED ON MAP

Iron City Heights, May 1904  
 Stationers, St. Louis, Mo. Copy of Recorded Plat  
 13.8 TOPOGRAPHY.



May 2nd 1916.  
 Located lots 2627, 2628, 2629, 2630, for  
 Ernest E. Shaw of C. M. Sanders.  
 Found old stakes and pipes from pipe, at S W, S E & N E  
 lot 2630. Marked S W & N E 2629 with stakes, pins.  
 The outside boundaries of these 4 lots measured as  
 shown above.

31  
 INDEXED ON MAP