

Corporation Line Extension Description
To the Village of Rushsylvania, Ohio

The following described real estate situated in the Township of Rushcreek, County of Logan, State of Ohio and being a part of Virginia Military Survey No. 13446 and being more particularly described as follows:

Beginning at a point in the centerline of C. H. No. 113 where the existing westerly corporation line intersects said centerline, said point being N. 80° 15' W. 145.00 feet from an iron bar that is the southeast corner to the Roberts Screw Products Company tract;

Thence with the centerline of C. H. No. 113, N. 80° 15' W. 792.00 feet to an iron bar that is the southwest corner to Frederick E. Winebrenner's present 3.85 Acre tract, passing through an iron bar at Winebrenner's southeast corner at 245.30 feet;

Thence with Winebrenner's west line, N. 9° 51' E. 196.40 feet to an iron bar, said iron bar being Winebrenner's northwest corner and in the south line of Robert L. Parker's present 50.00 Acre tract;

Thence with the line between Parker and Winebrenner - Roberts Screw Products Company, N. 82° 08' E. 1,046.70 feet to a point in said line where the existing westerly corporation line intersects, passing through an iron bar at the northwest corner to the Roberts tract at 647.40 feet;

Thence with the existing westerly corporation line, S. 31° 45' W. 550.00 feet to the place of beginning, containing 6.92 Acres, more or less.

The above described includes Frederick E. Winebrenner's present 3.85 Acre tract and Roberts Screw Products Company's present 3.07 Acre tract.

I hereby certify that this is a true and accurate description as prepared by me on May 17, 1973.



Daniel E. Gilbert
Daniel E. Gilbert, P.S.
Reg. Sur. No. 5402
1041 N. Main St.
Bellefontaine, Ohio 43311

INDEXED ON MAP
5433 1D

ROBERT E. PARKER ETUX
 48.95 AC. - OUT. 1.05 AC. - IN.
 TOTAL - 50.00 AC.

JOHN J. BLUMENSCHEIN
 1.00 AC.

N. 92° 51' E.
 196.40'

FREDERICK E. WINEBRENNER ETUX
 3.85 ACRES

ROBERTS SCREW PRODUCTS CORP.
 307 ACRES

550.00'
 CORPORATION LINE

RUSHSYLVANIA

1046.70'
 399.30'

PROPOSED CORPORATION LINE
 N. 82° 08' E.
 647.40'

S. 19° 58' W.
 398.70'

546.70'
 N. 80° 15' W.
 PROPOSED CORPORATION LINE
 C.H. No. 113 - 60'

S. 31° 45' W.
 EXISTING

445.0' TO IRON BAR

• - IRON BARS.

CORPORATION LINE EXTENSION
 VILLAGE OF RUSHSYLVANIA
 V.M.S. No. 13446
 RUSHCREEK TOWNSHIP
 LOGAN COUNTY, OHIO
 MAY 17, 1973
 SCALE: 1" = 100'

5433 1P

INDEXED ON MAP



PLATED BY:
 DANIEL E. GILBERT, P.S.
 REG. SUR. NO. 5402
 1041 N. MAIN ST.
 BELLEFONTAINE, OHIO 43311

REC'D 6-30-95 SKY OK

LESLIE H. GEESLIN

REGISTERED SURVEYOR 5248

P. O. BOX 274

RUSHSYLVANIA, OHIO 43347

TELEPHONE: (513) 468-2793

WINEBRENNER SURVEY

June 29, 1995

The following described real estate situated in the State of Ohio, County of Logan, Township of Rushcreek, being part of Virginia Military Survey 13346 in the Village of Rushsylvania, and more particularly described as follows:

Beginning at a cap and nail set in the centerline of County Highway 113 and the corporation line of the Village of Rushsylvania at the southeast corner of Rock E. O'Brien, etux's 1.00 acre tract as described in D. B. Vol. 381 Page 610.

Thence with said O'Brien's east line and said corporation line N. 9° 50' 11" E. 196.39 feet to a 3/4 inch iron bar found in the south line of Leona Bartlett's 50 acre tract as described in O. R. Vol. 18 Page 860.

Thence with said Bartlett's south line and said corporation line N. 82° 07' 28" E. 276.17 feet to a 5/8 inch iron bar set.

Thence S. 9° 50' 11" W. 280.01 feet to a cap and nail set in the centerline of said C. H. 113 and said corporation line.

Thence with the centerline of said C. H. 113 and said corporation line N. 80° 15' 00" W. 263.07 feet to the place of beginning.

Containing 1.439 acres more or less of which 0.181 acre is in the right of way of County Highway 113.

The above described 1.439 acre tract being part of Alice Winebrenner's 3.85 acre tract as described in D. B. Vol. 400 Page 757.

Bearings are based on an assumed bearing (N. 80° 15' 00" W.) for the centerline of County Highway 113 in this field survey by Leslie H. Geeslin, Reg. Surveyor 5248 on June 29, 1995.

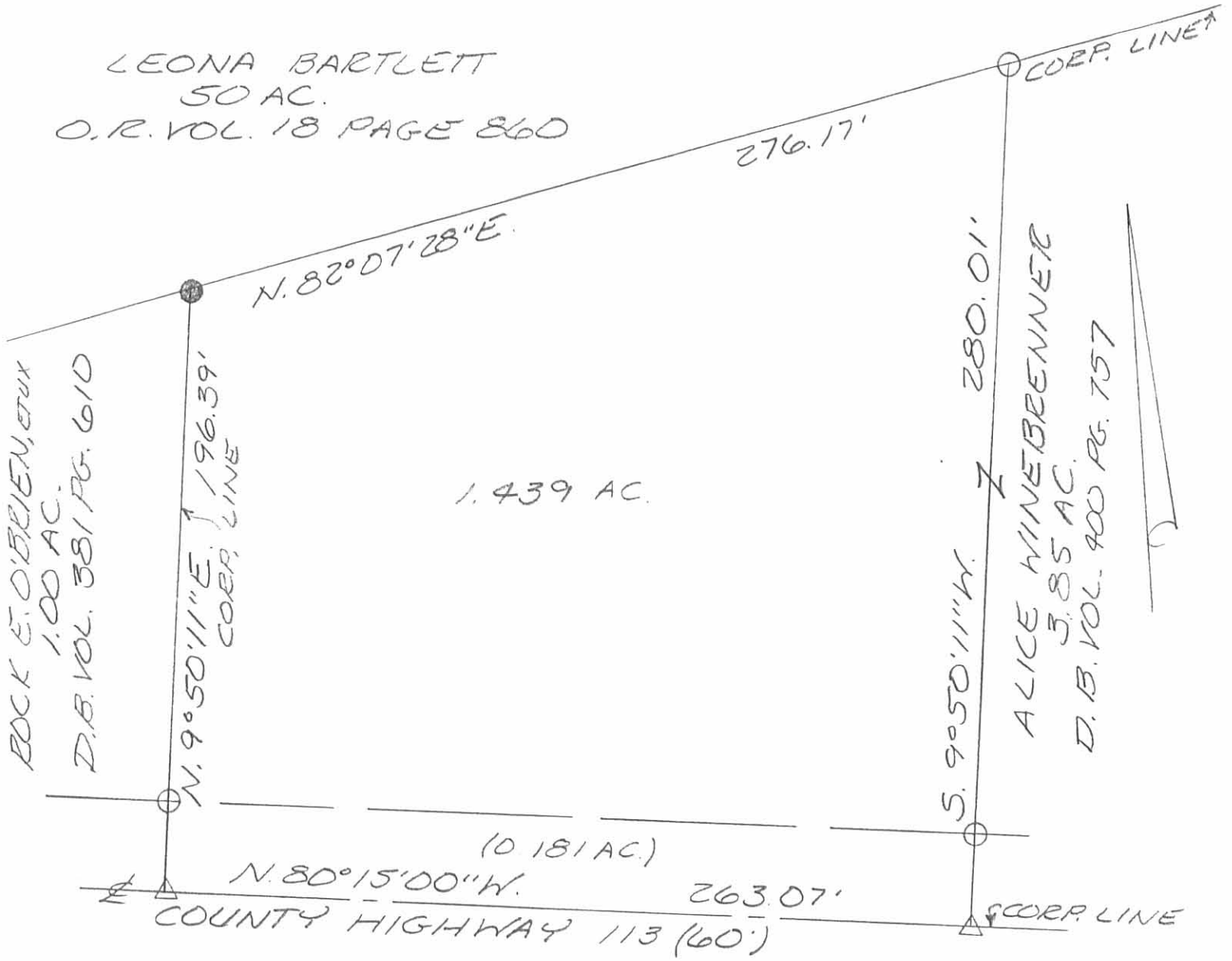


RU A:\16\WINEBRNR.SAM

Leslie H. Geeslin

INDEXED
5433 20

LEONA BARTLETT
50 AC.
O.R. VOL. 18 PAGE 860



ROCK E. O'BRIEN, ETUX
1.00 AC.
D.B. VOL. 381 PG. 610

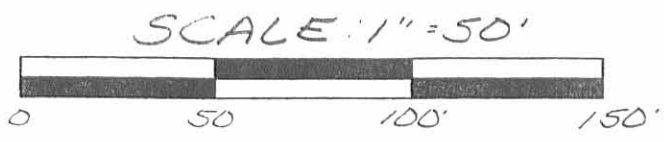
N. 9° 50' 11\"/>

1.439 AC.

Alice WINEBRENNER
5.85 AC.
D.B. VOL. 400 PG. 757

(0.181 AC.)
N. 80° 15' 00\"/>

- LEGEND:
- = 3/4 INCH IRON BAR FOUND
 - = 5/8 INCH IRON BAR SET
 - △ = CAP AND NAIL SET



SURVEY OF 1,439 ACRES IN THE VILLAGE OF RUSHSYLVANIA, VIRGINIA MILITARY SURVEY 13346, RUSHCREEK TOWNSHIP, LOGAN COUNTY, OHIO FOR ALICE WINEBRENNER ON JUNE 29, 1995



Leslie H. Geeslin
LESLIE H. GEESLIN
RUSHSYLVANIA, OH
(513) 468-2793

INDEXED ON MAP
5433 2P