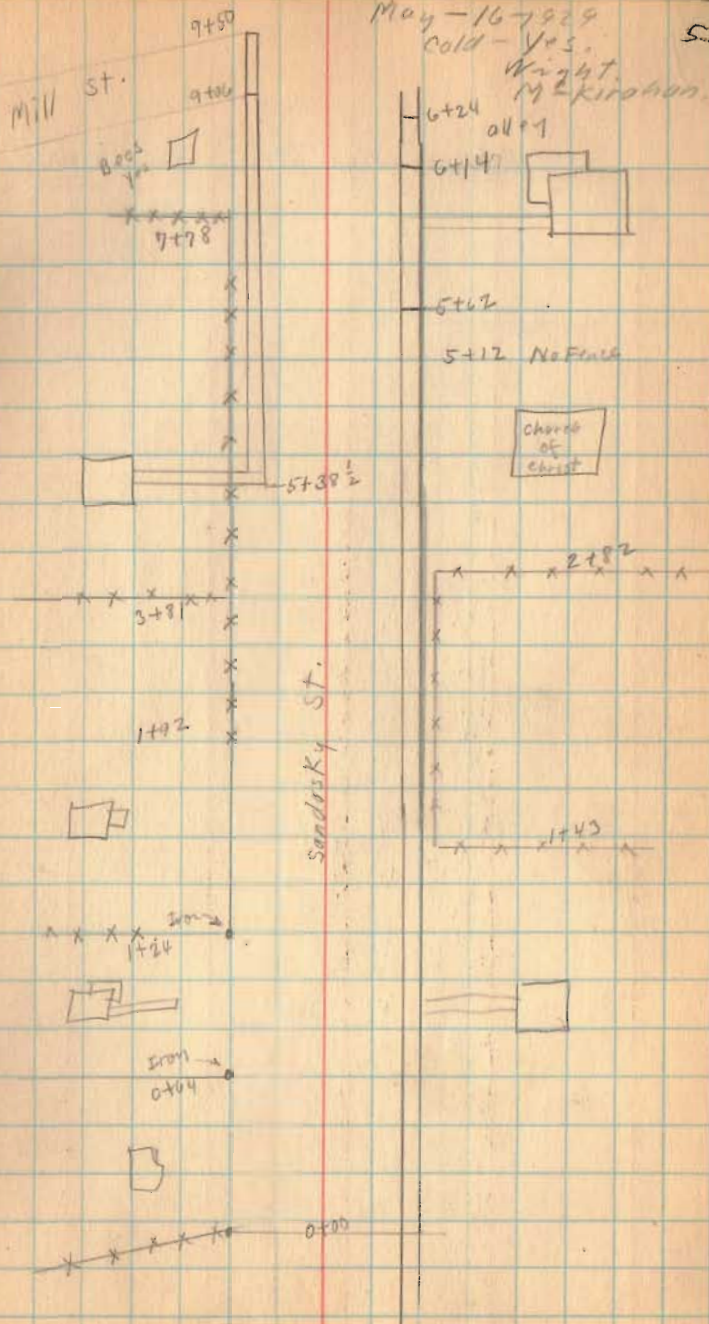


Rushsylvania Streets
Sandusky St.

INDEXED ON MAP

4440



Sandusky St. Rushsylvania.

5-16-29

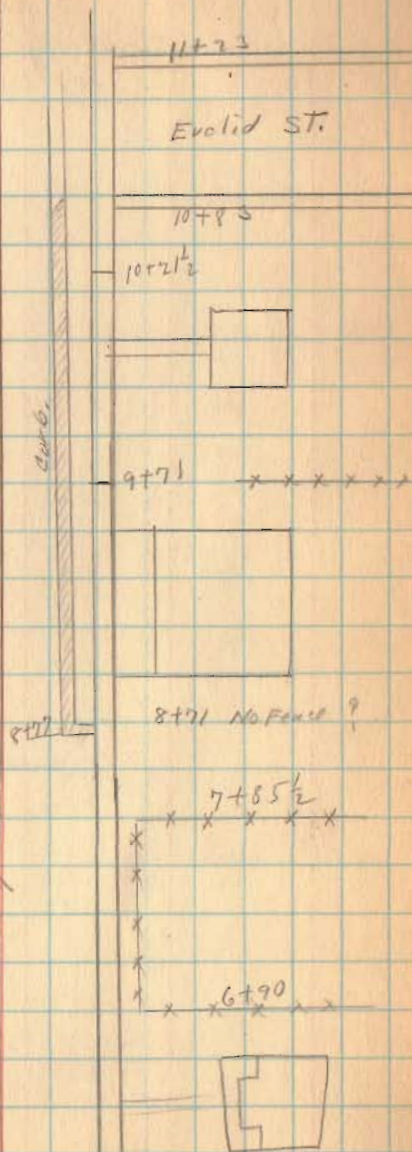
57

Euclid
St

This side all lots No Land Under Water

curb in this block 40'

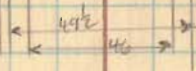
Sandusky
St.



Sandusky St. Richsylvanid.

Hits No Lead Lines Noted
See Page 57 to 63

and the gutter



and the gutter

Hits No Lead Lines Noted
See Pages 57 to 63

11403 Euclid St. 4

5-16-29

55

Miami Road.

AS-1

20+00

Occ. St. L.R.P.

049. 19+00 R.R. St.

Pennsylvania Sts.
Rail Road St.

May - 16 - 1929
Cold.
Wright
M^{rs} Kirshen.

56

XXXXXX
7+92

7+92

ALLEY
XXXXXX
5+76

Walnut St.

ALLEY

ALLEY

Rail Road St.

117

90

Right of way 45'?

C.C.B. & St. L. R.R.

25

25

0+00

Sandusky St.

Sandusky St. Rushsylvania.

May 20-1925

Clear
Wright
McKrohn

14711.5 57

Bridge
S.A.H.

11751.5

13780.3

(Richard)

D.T.O. 6

(Finest
Time)

Prank
Stone

13730 13740

12722

Quarry

Red.

x x x

DR. ZURMEL

12732

Prank

x x x x

12722

Quarry

11793

11723



Sandusky St. - Rushsylvania.

5-20-19

6+27 58

A. J. L. 22 1/2

147 018

147 018

15 490.8

White case

15410.7

15790.1

Canal Bank
Bank

15752.5

FRONT

15720.3

Bank
Tack

14759.3

14759.3

14754.2

14770
019 E

14755

14757.7

14741.5

011 2/3 km

14720

13790.3 To corner
Mrs. Ocker

Sandusky St. Pennsylvania

R.R. St.

18778

18772

157118

11/11/14 → CA

187146

P.C. Geiger

172952

connect
black

1716415

Filling

Station

1070215

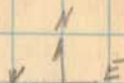
Black
Havel

Sandusky St. Rocky/loam.

12+85
XXXXXX

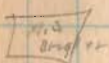


11+9



12+25

12+27



11+26

11+26



XXXXXX

grass

No gutter

No gutter

grass

40

11+25.2

11+27.6



XXXXX
10+66

grass

No gutter

10+72.2



9+55

9+54

9+3

Sandusky St. Trasky Union

15754.0
F.E. Summary
Cement
Block

15744

Brick

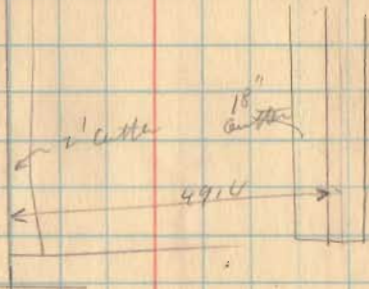
15122.13

14+98

Exit
St.

14750.6

14745

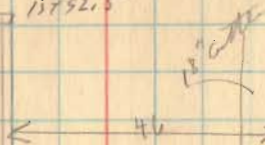


High
St
Gas

No
exit

13720.00

13752.5



Grass

4

46

13784.5

13774

13735



Grass

No gutter

43

No gutter

Grass

Sandusky St. Restylonia.

Bruck

17+55

Pratt

17+12

Pratt
C.V. 2125M

17+12

Pratt

17+02

Bruck

16+680

Pratt
Pos
off

16+35

Bruck
B.W.B. 2001

16+12

Pratt

16+04

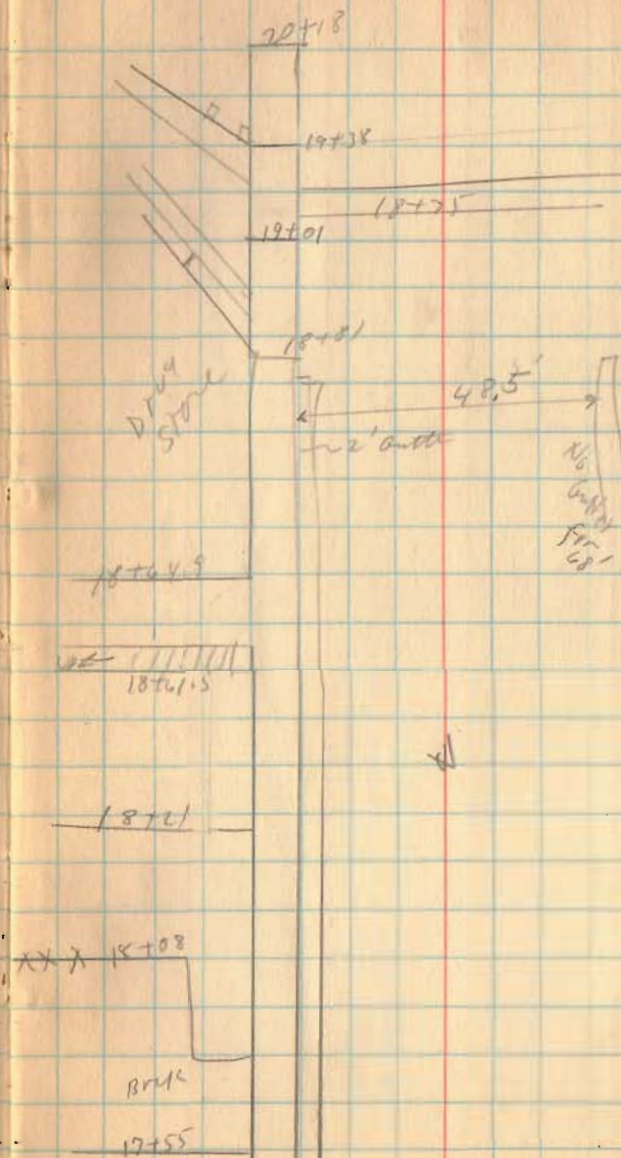
16+04

15+23

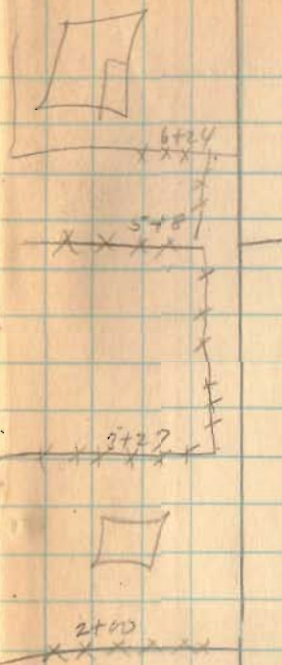
Pratt

15+54.7

Sandusky St. Rushsylvania.



Sandusky St. Rusty Locusts



1+14



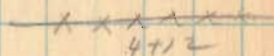
0+10
Same as
0+10 page 53.

June-5-1919
Wright
Liggett

64



4+67



surth.
A
Sandusky St.



5-5-29

65

Sandusky St. Rushsylvania,



8707
X X X X

Sign 8789

8787

X X X X

8734 (Corporation Line)

8788

X X X X

High
way
line

X X X X X

8758

Sandusky St



6766

