

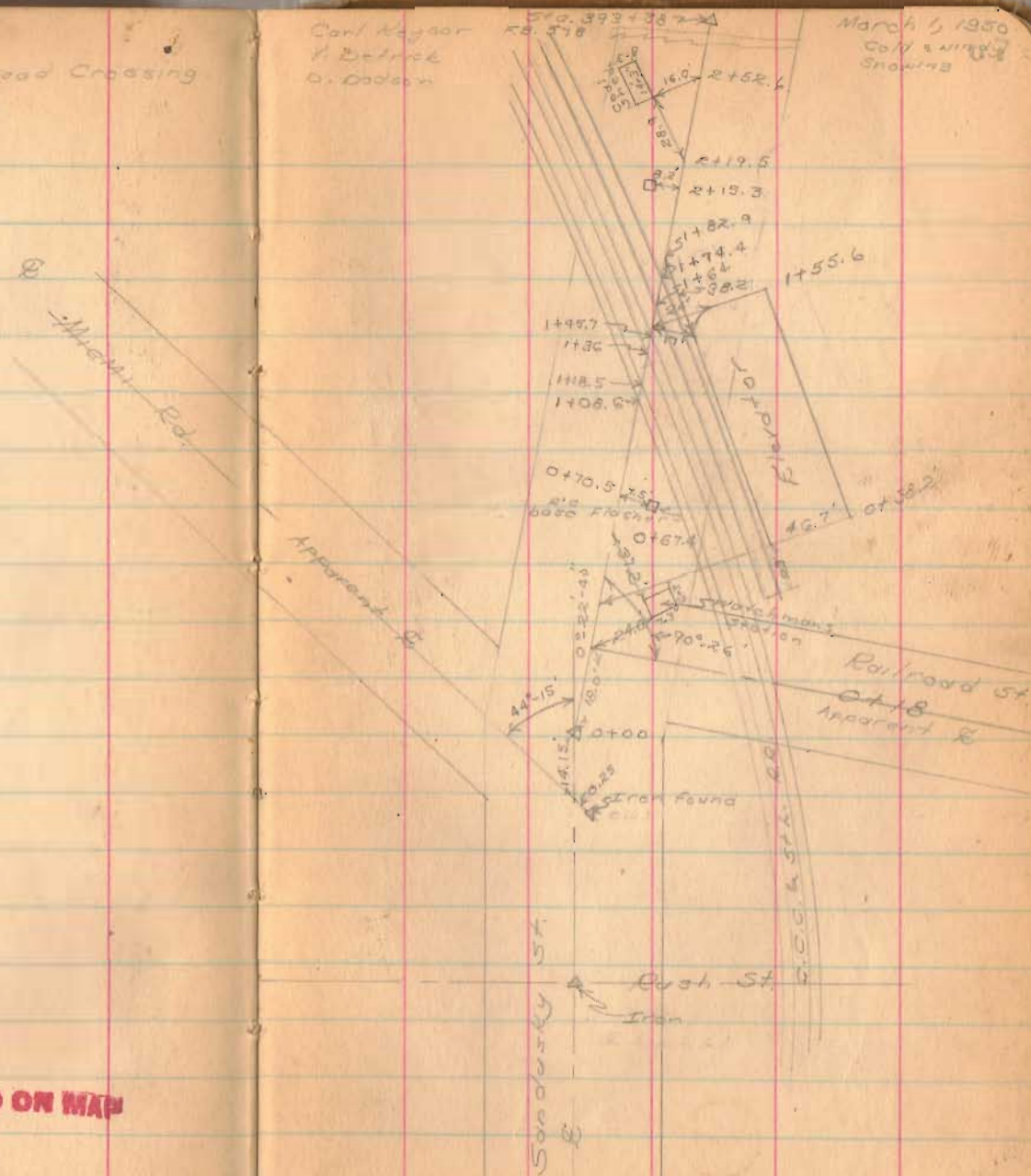
Survey of
Sandusky Street Railroad Crossing
Rushyironia

R.R. spiked set on @

5+0 0+00
0+50
0+75
1+25
2+25
2+75

Carl Meyer
A. DeWitt
O. Dodson

March 1, 1950
Coll. & N. M. S.
Snowing

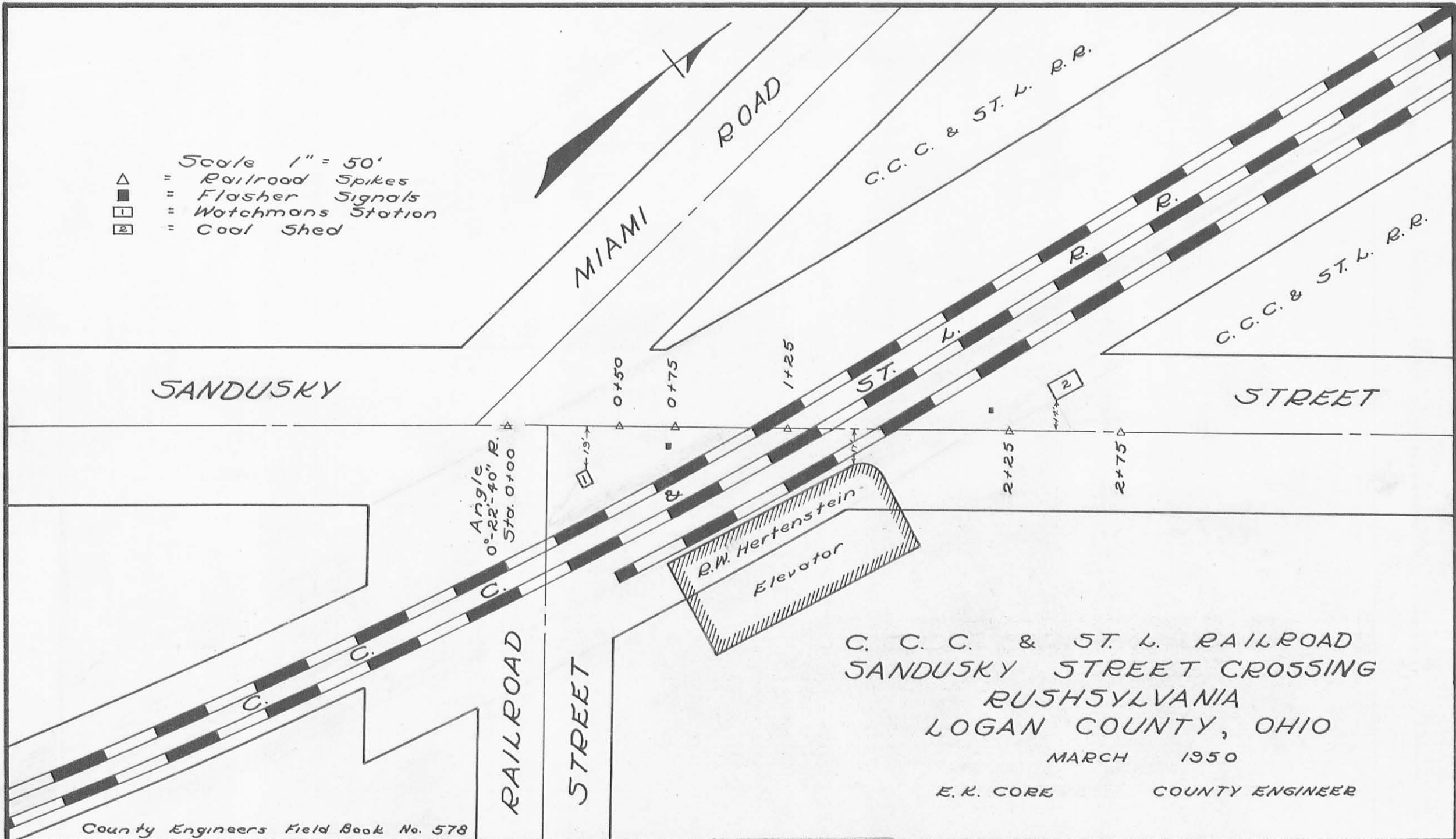


INDEXED ON MAP

2093

5+0 3/0+40.75
R. 578
Pg. 26

- Scale 1" = 50'
- △ = Railroad Spikes
 - = Flasher Signals
 - ① = Watchmans Station
 - ② = Coal Shed



County Engineers Field Book No. 578

INDEXED ON MAP
2013 IP