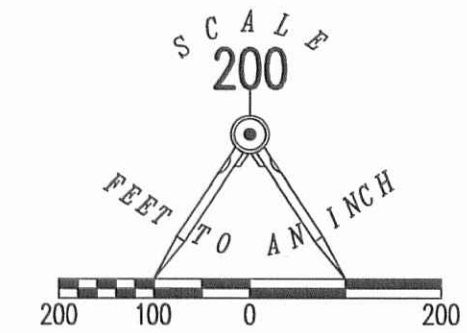
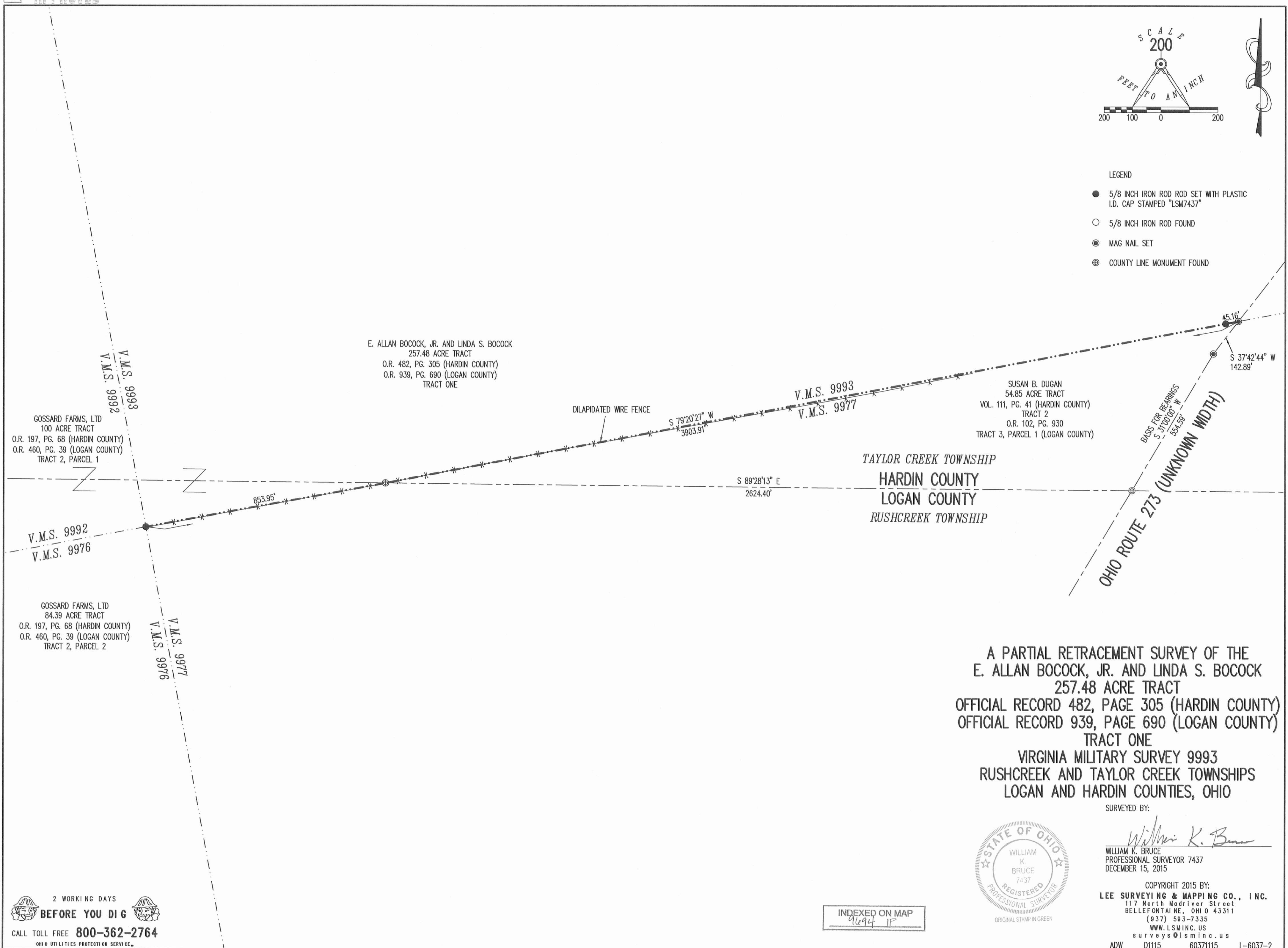


APPROVED



- LEGEND
- 5/8 INCH IRON ROD SET WITH PLASTIC I.D. CAP STAMPED "LSM7437"
 - 5/8 INCH IRON ROD FOUND
 - ⊙ MAG NAIL SET
 - ⊕ COUNTY LINE MONUMENT FOUND



GOSSARD FARMS, LTD
100 ACRE TRACT
O.R. 197, PG. 68 (HARDIN COUNTY)
O.R. 460, PG. 39 (LOGAN COUNTY)
TRACT 2, PARCEL 1

E. ALLAN BOCOCK, JR. AND LINDA S. BOCOCK
257.48 ACRE TRACT
O.R. 482, PG. 305 (HARDIN COUNTY)
O.R. 939, PG. 690 (LOGAN COUNTY)
TRACT ONE

SUSAN B. DUGAN
54.85 ACRE TRACT
VOL. 111, PG. 41 (HARDIN COUNTY)
TRACT 2
O.R. 102, PG. 930
TRACT 3, PARCEL 1 (LOGAN COUNTY)

TAYLOR CREEK TOWNSHIP
HARDIN COUNTY
LOGAN COUNTY
RUSHCREEK TOWNSHIP

GOSSARD FARMS, LTD
84.39 ACRE TRACT
O.R. 197, PG. 68 (HARDIN COUNTY)
O.R. 460, PG. 39 (LOGAN COUNTY)
TRACT 2, PARCEL 2

A PARTIAL RETRACEMENT SURVEY OF THE
E. ALLAN BOCOCK, JR. AND LINDA S. BOCOCK
257.48 ACRE TRACT
OFFICIAL RECORD 482, PAGE 305 (HARDIN COUNTY)
OFFICIAL RECORD 939, PAGE 690 (LOGAN COUNTY)
TRACT ONE
VIRGINIA MILITARY SURVEY 9993
RUSHCREEK AND TAYLOR CREEK TOWNSHIPS
LOGAN AND HARDIN COUNTIES, OHIO

SURVEYED BY:
William K. Bruce
WILLIAM K. BRUCE
PROFESSIONAL SURVEYOR 7437
DECEMBER 15, 2015



COPYRIGHT 2015 BY:
LEE SURVEYING & MAPPING CO., INC.
117 North Madriver Street
BELLEFONTAINE, OHIO 43311
(937) 593-7335
WWW.LSMINC.US
surveys@lsminc.us
ADW D1115 60371115 L-6037-2

INDEXED ON MAP
9694 1P

2 WORKING DAYS
BEFORE YOU DIG
CALL TOLL FREE 800-362-2764
OHIO UTILITIES PROTECTION SERVICE