

REC'D 4-26-07 SMY OK

LESLIE H. GEESLIN

REGISTERED SURVEYOR 5248

P. O. BOX 274

RUSHSVLVANIA, OHIO 43347

TELEPHONE: (513) 468-7265

STRAWSER SURVEY

April 18, 2007

The following described real estate situated in the State of Ohio, County of Logan, Townships of Rushcreek and Jefferson, being part of Virginia Military Surveys 3320 and 3321 and more particularly described as follows:

Beginning at a railroad spike found in the centerline of County Highway 25 and the east line of V. M. S. 3321 at the southeast corner of Glen B. Chaney etal's 9.558 acre tract as described in O. R. Vol. 236 Page 131.

Thence with the east line of V. M. S. 3321 (the west line of V. M. S. 3320) S. 9° 42' 13" E. 877.37 feet to a 5/8 inch iron bar set.

Thence with the south line of a tract of land in which the owner is unknown N. 73° 23' 04" E. 66.64 feet to a magnetic nail set in the centerline of County Highway 25, passing a 5/8 inch iron bar set at 41.23 feet.

Thence with said centerline S. 26° 58' 55" E. 139.26 feet to a railroad spike found at the northeast corner of Mark S. Reames etal's 1.57 acre tract as described in O. R. Vol. 224 Page 318.

Thence with said Reames' north line S. 63° 39' 42" W. 112.22 feet to a 5/8 inch iron bar set in said V. M. S. line, passing a 5/8 inch iron bar set at 25.00 feet.

Thence with the east line of V. M. S. 3321 (the west line of V. M. S. 3320) S. 9° 42' 13" E. 2481.71 feet to a 5/8 inch iron bar set in the north line of Virginia Military Survey 3444.

Thence with the north line of V. M. S. 3444 (the south line of V. M. S. 3321) S. 80° 46' 03 " W. 1656.66 feet to a 5/8 inch iron bar found at the southeast corner of Chery L. Shank etal's 189.320 acre tract as described in O. R. Vol. 683 Page 304.

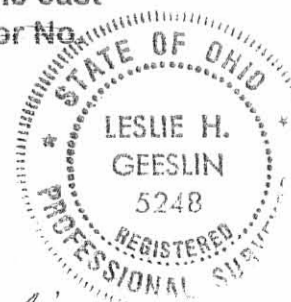
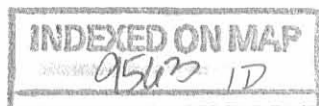
Thence with said Shank's east line and the east line of Donald W. Ropp etux's Par. I Tract I {original 68.61 ac.} & Par. I Tract IV {original 57.37 ac.} as described in O. R. Vol. 50 Page 405 N. 8° 47' 01" W. 3518.98 feet to a stone found in the south line of Marlon F. Green etux's 13.447 acre tract as described in O. R. Vol. 88 Page 264, passing a 5/8 inch iron bar found at said Shank's northeast corner at 1888.34 feet.

Thence with said Green's south line and the south line of said Glen B. Chaney etal's 9.558 acre tract N. 80° 52' 09" E. 1600.19 feet to the place of beginning, passing said Chaney's southwest corner at 175.13 feet and a 5/8 inch iron bar set at 1575.19 feet.

Containing 131.794 acres more or less, of which 0.299 acre is in V. M. S. 3320 and 131.495 acres are in V. M. S. 3321 and included in the 131.794 acre tract 1.200 acres are in Jefferson Township and 130.594 acres are in Rushcreek Township. There is a total of 0.285 acre in the right of way of C. H. 25.

The above described 131.794 acre tract being all of Dorothy May Strawser etal's 132.10 acre tract as described in O. R. Vol. 81 Page 430.

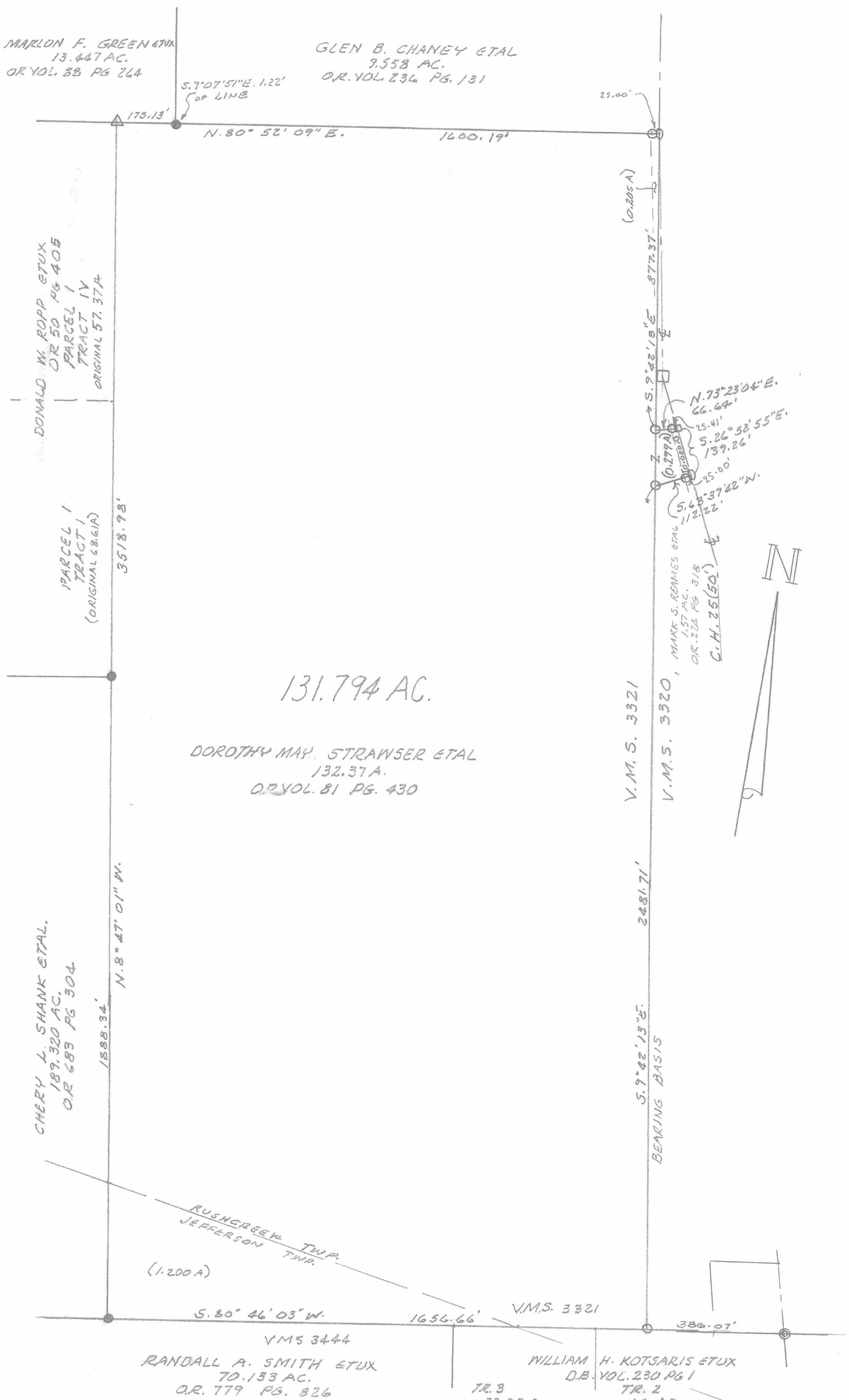
Bearings are based on an assumed bearing (S. 9° 42' 13" E.) for the east line of V. M. S. 3321 in this field survey by Leslie H. Geeslin, Reg. Surveyor No. 5248 on April 18, 2007.



Leslie H. Geeslin

MARLON F. GREEN ETUX
13.447 AC.
OR VOL. 88 PG 264

GLEN B. CHANEY ETAL
9.558 AC.
OR VOL 236 PG. 131



- LEGEND:
- △ = STONE FOUND
 - = R.R. SPIKE FD.
 - = 1" IRON BAR FD.
 - ⊙ = 1" IRON PIPE FD.
 - = 5/8" IRON BAR FD.
 - ◻ = MAGNETIC NAIL SET
 - = 5/16" IRON BAR SET

SURVEY OF 131.794 AC. TRACT IN
V.M.S. 3320 & 3321, RUSH CREEK &
JEFFERSON TOWNSHIPS, LOGAN
COUNTY, OHIO FOR GLENN STRAWSER
APRIL 18, 2007
SCALE: 1" = 200'



Leslie H. Geeslin
LESLIE H. GEESLIN
RUSH SYLVANIA, OHIO

INDEXED ON MAP
9563 1P