

FB 711

Resurvey Part of C.R. 5
Rushsylvania North to Co. Line

34+48.31 - P.I. - 1" iron Fd. -

Ref.: F.B.K. #707, pg. 27

0°-11'-48" Lt.

(Reset w/ 3/8" dia cpd re-bar
and monument box - 24 Aug. 00)

33+58.67 - P.O.T. - R.R. Spk. Fd. -

Ref.: 1981 Clapsaddle Survey

Index No. 7190

(Reset 15 Aug. 00)

32+84.31 - P.O.T. - Mag Nail w/
Shiner Fd. - Ref. 1998

Geeslin Survey - Index

No. 7190

(Reset 15 Aug. 00)

30+00 - P.O.T. - R.R. Spk. Set

15 Aug. 00

26+75.60 - P.I. - Stone Fd. -

Ref.: F.B.K. #707, pg. 27 -

Beginning of this survey -

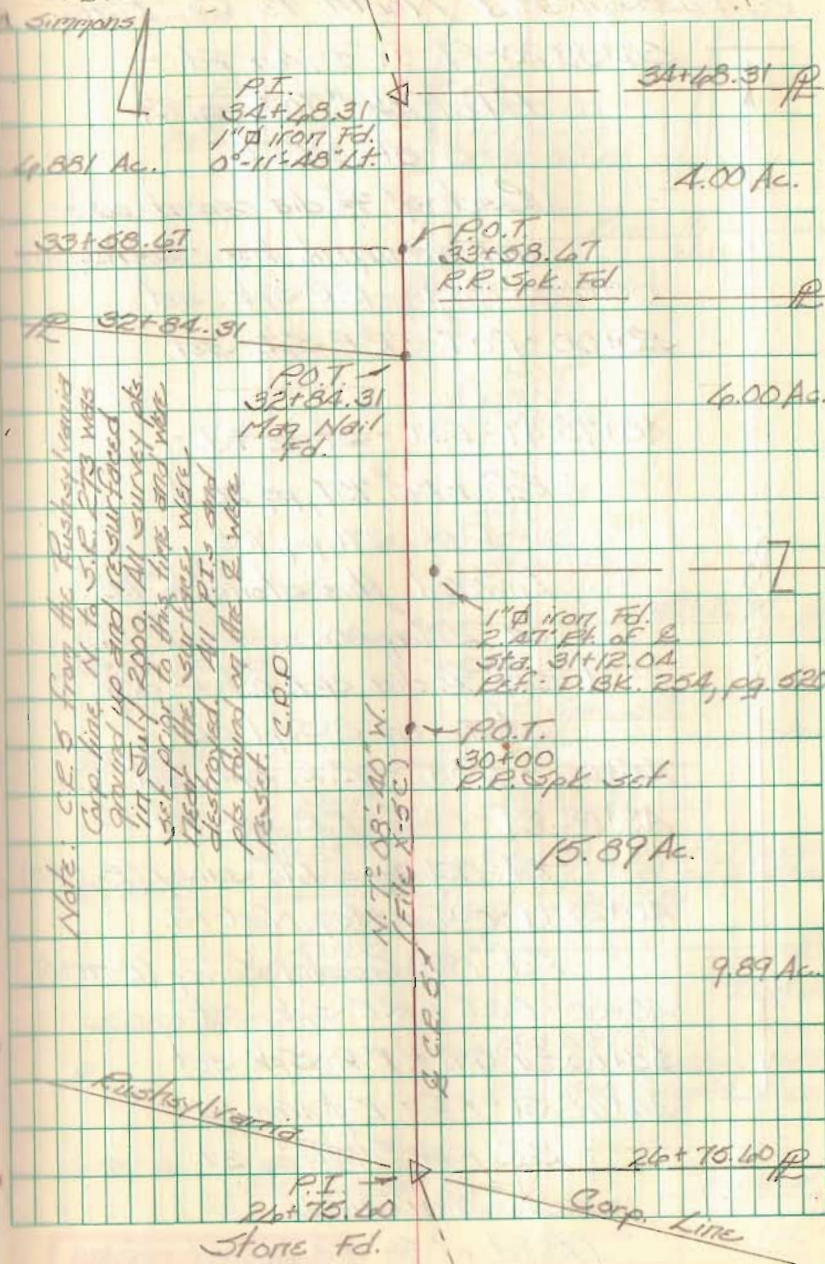
(Set 1" capped pipe over
stone - 3 Sept. 00)

C. Nichols

C. D. II

Symmons

March 00



P.I.
34+48.31
1" iron Fd.
0°-11'-48" Lt.

34+48.31 P

4.00 Ac.

33+58.67

P.O.T.
33+58.67
R.R. Spk. Fd.

P

P 32+84.31

P.O.T.
32+84.31
Mag Nail
Fd.

6.00 Ac.

1" iron Fd.
2.27' E. of S.E.
Sta. 31+12.04
Ref.: D.B.K. 254, pg. 520

P.O.T.
30+00
R.R. Spk. Set

15.89 Ac.

9.89 Ac.

Rushsylvania

P.I.

26+75.60

Stone Fd.

26+75.60 P

Corp. Line

INDEXED ON MAP
9480

Resurvey Part of C.R. 5
 Rushsylvania North to Co. Line.

56+58.20 - P.I. - 1" ϕ iron Fd.

Ref: F.B.K. #707, pg. 29

8°-51'-30" Rt.

(Reset w/ 3/8" dia capped rebar
 and monument box - 24 Aug. 00)

55+00 - P.O.T. - R.R. Spk. set

50+00 - P.O.T. - R.R. Spk. set

45+75.47 - P.O.T. - Stone Fd. -

Ref: F.B.K. #707, pg. 28 &

D.R.K. 371, pg. 705

Lowered this stone to 1.5'
 on 2 May 00.

(Set 3/8" dia. cpd. rebar over
 stone on 8 Sept. 00)

45+00 - P.O.T. - R.R. Spk. set

43+02.29 - P.O.T. - R.R. Spk. Fd.

Ref: 1981 Cappsaddle Survey (R-7190)

40+23.79 - P.O.T. - Mag Nail Fd.

Ref: 1998 Geeslin Survey (R-7190)

40+00 - P.O.T. - R.R. Spk. set

35+00 - P.O.T. - R.R. Spk. set

34+68.31 - P.I. - 1" ϕ iron Fd.

Ref: F.B.K. #707, pg. 27

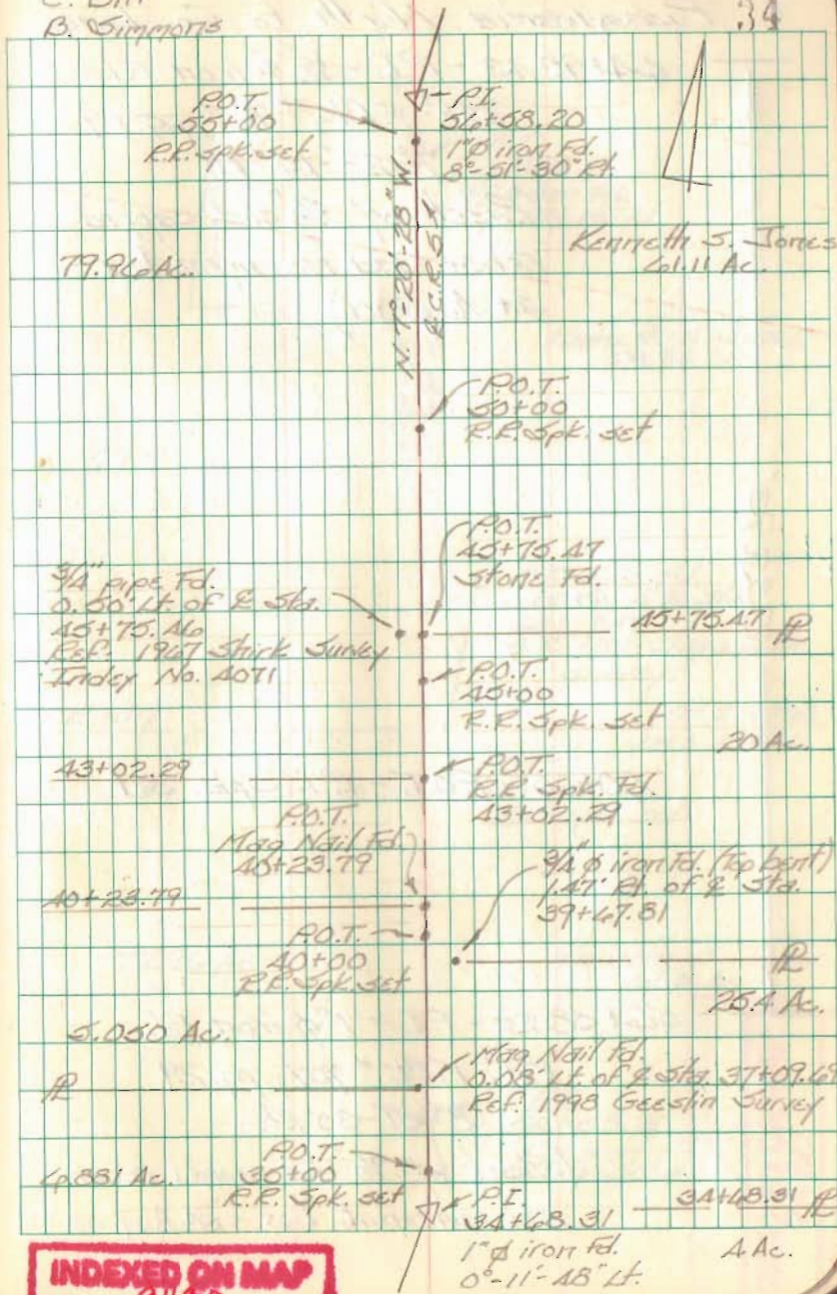
0°-11'-48" Lt.

(Reset w/ 3/8" dia capped rebar
 and monument box 24 Aug. 00)

2189.89'

C. Nichols
 C. Dill
 B. Simmons

March 00



INDEXED ON MAP

FB 711

Resurvey Part of C.R. 5
Pennsylvania North to Co. Line44+92.13 - P.I. - $\frac{1}{2}$ " ϕ iron Fd.

Ref: F.B.K. # 707; pg. 29

7°-22'-15" Lt.

(Reset w/ $\frac{9}{8}$ " dia. capped
rebar and monument box -
24 Aug. 00)

833.93'

40+00 - P.O.T. - R.R. Spk. set

56+58.20 - P.I. - 1" ϕ iron Fd.

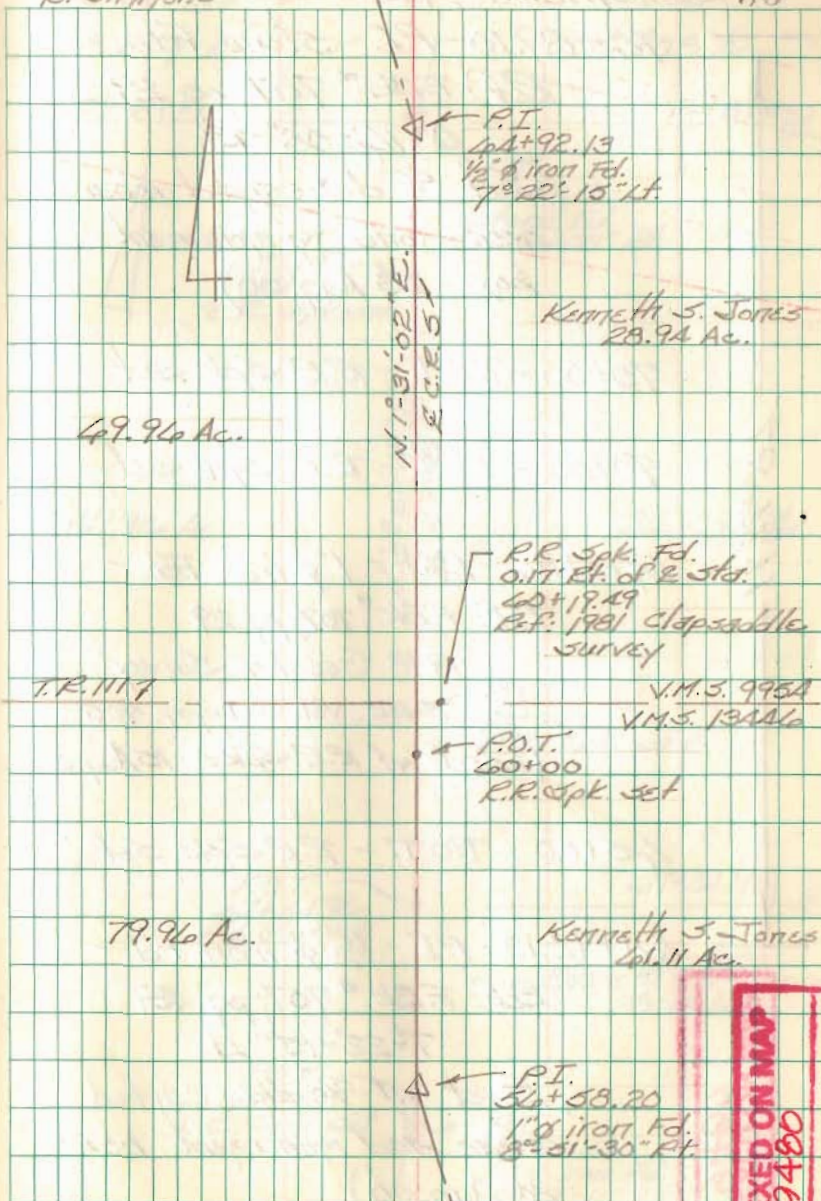
Ref: F.B.K. # 707; pg. 29

8°-51'-30" Rt.

(Reset w/ $\frac{9}{8}$ " dia. capped rebar
and monument box - 24 Aug. 00)C. Nichols
C. Dill
B. Simmons

March 00

35



INDEXED ON MAP

INDEXED ON MAP
9480

FB 711

Resurvey Part of C.R. 5
 Rushsylvania North to Co. Line.

76+89.10 - P.I. - Stone Fd.

Ref: F.B.K. # 707; pg. 29

0°-14'-08" Rt.

(Set $\frac{3}{8}$ " dia. capped rebar
 over stone w/ monument
 box - 23 Aug. 00)

75+00 - P.O.T. - R.R. Spk. set

70+00 - P.O.T. - R.R. Spk. set

67+61.96 - P.O.T. - 1" ϕ iron Fd. -

Ref: F.B.K. # 707; pg. 29

1988 Geeslin Survey

D.B.K. Vol. 371; pg. 705

(Reset w/ R.R. Spk. - 15 Aug. 00)

65+00 - P.O.T. - R.R. Spk. Set

64+92.13 - P.I. - $\frac{1}{2}$ " ϕ iron Fd. -

Ref: F.B.K. # 707; pg. 29

7°-22'-15" Lt.

(Reset w/ $\frac{3}{8}$ " dia. capped
 rebar and monument box -
 24 Aug. 00)

INDEXED ON MAP
 9400

C. Nichols
 C. Dill
 B. Simmons

March 00

36

8.257 Ac.

5.208 Ac.

76+89.10

76+89.10



P.O.T.
 70+00
 R.R. Spk. set

P.I.
 76+89.10
 Stone Fd.
 0°-14'-08" Rt.

69.96 Ac.

24.392 Ac.

N. 0° 01' 13" W
 R.C.R. 5

P.O.T.
 70+00
 R.R. Spk. set

P.O.T.
 67+61.96
 1" ϕ iron Fd.

67+61.96

Kenneth S. Jones
 28.94 Ac.

P.O.T.
 65+00
 R.R. Spk. set

P.I.
 64+92.13
 $\frac{1}{2}$ " ϕ iron Fd.
 7°-22'-15" Lt.

FB 711

Resurvey Part of C.R. 5
 Rushsylvania North to Co. Line

82+80.32 - P.O.T. - R.R. Spk. Fd.

Ref: 1997 Clapsaddle survey

& 1997 Geeslin survey

Index No. 8671

(Reset 15 Aug. 00)

81+20.51 - P.O.T. - PK nail Fd.

Ref: 1997 Geeslin survey -

Index No. 8671

(Reset w/ mag nail - 15 Aug. 00)

80+00 - P.O.T. - R.R. Spk. set

79+43.96 - P.O.T. - Mag nail Fd.

Ref: 1998 Geeslin Survey -

Index No. 7854

(Reset 15 Aug 00)

76+89.10 - P.I. - Stone Fd.

Ref: F.Bk. # 707, pg. 29

0°-14'-08" Rt.

(Set 9/8 dia. capped rebar
 over stone w/ monument
 box - 23 Aug. 00)

591.22'

INDEXED ON MAP
 9460

C. Nichols

C. Dill

B. Simmons

3.743 Ac.

March 00

37

82+80.32

P.O.T.
 82+80.32
 R.R. Spk. Fd.

3.000 Ac.

81.918 Ac.

81+20.51

P.O.T.
 81+20.51
 PK nail Fd.

8.257 Ac.

P.O.T.
 80+00
 R.R. Spk. set

79+43.96

P.O.T.
 79+43.96
 Mag nail Fd.

5.208 Ac.

N 0°-35'-00" W
 E.C.P.

76+89.10

P.I.
 76+89.10
 Stone Fd.
 0°-14'-08" Rt.

49.96 Ac.

76+89.10

24.392 Ac.

FB 711

Resurvey Part of C.R. 5
 Pennsylvania North to Co. Line.

87+80.48 - P.I. - 1/2" ϕ iron Fd -

Ref: F.R.K. #107, pg. 30

0°-03'-00" Lt.

(Reset w/ 5/8" dia capped
 rebar and monument box -
 23 Aug. 00)

87+75.73 - P.O.T. - PK nail Fd.

Ref: 1988 & 1998 Geeslin Surveys

(Reset w/ mag nail 15 Aug. 00)

85+06.25 - P.O.T. - Mag nail Fd.

Ref: 1998 Geeslin Survey (R-785A)

(Reset 15 Aug. 00)

85+00 - P.O.T. - R.R. Spk. Set

84+81.69 - P.O.T. - PK nail Fd.

Ref: 1988 Geeslin Survey &

1992 Clapsaddle survey

(Reset w/ mag nail 15 Aug. 00)

82+80.32 - P.O.T. - R.R. Spk. Fd.

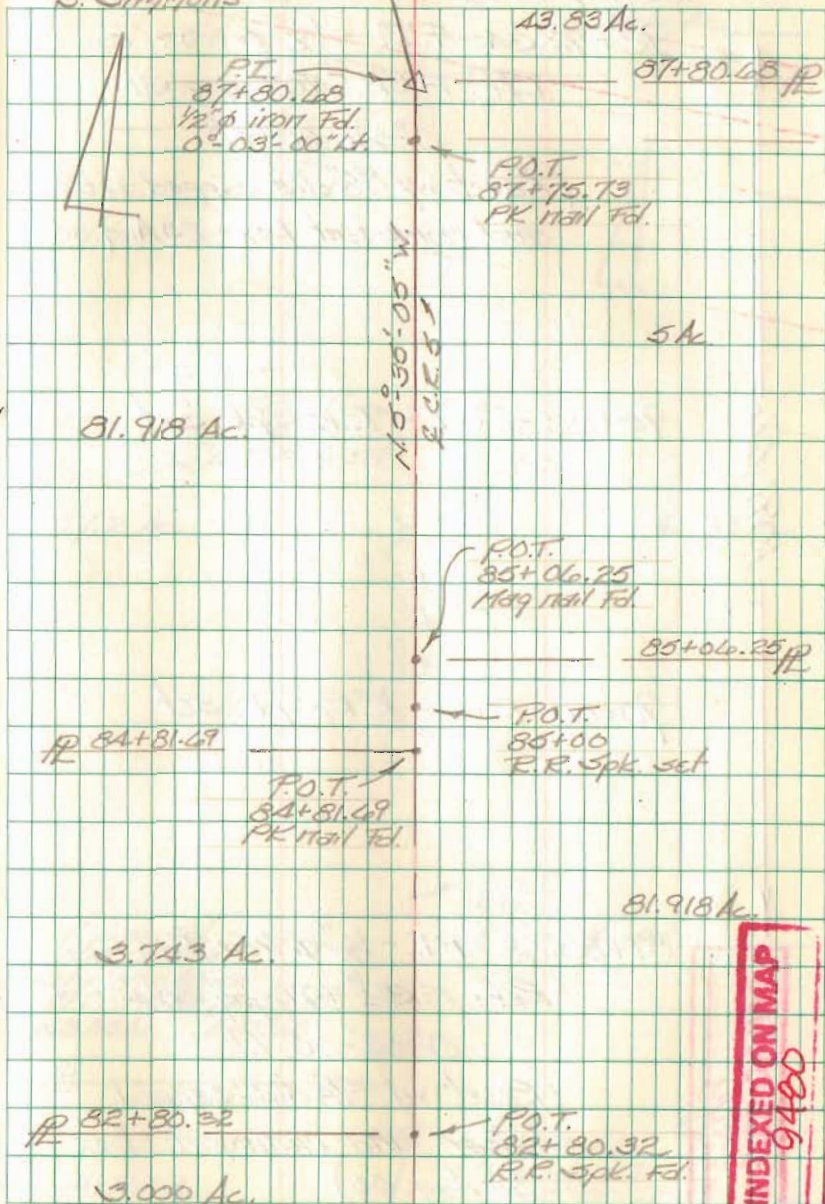
(Reset 15 Aug. 00)

500.36'

C. Nichols
 C. Dill
 B. Simmons

March 00

38



INDEXED ON MAP
 9400

FB 711

Resurvey Part of C.R. 5
 Rustsylvania North to Co. Line

98+72.34 - P.I. - $\frac{1}{2}$ " ϕ iron Fd.

Ref: F.B.K. #707; pg. 31

$0^{\circ}21'00''$ Lt.

(Reset w/ $\frac{5}{8}$ " dia. capped rebar
 and monument box - 23 Aug. 00)

95+00 - P.O.T. - R.R. Spk. set

90+00 - P.O.T. - R.R. Spk. set

87+80.48 - P.I. - $\frac{1}{2}$ " ϕ iron Fd.

Ref: F.B.K. #707; pg. 30

$0^{\circ}03'00''$ Lt.

(Reset w/ $\frac{5}{8}$ " dia. capped
 rebar and monument box
 23 Aug. 00)

1091.66'

INDEXED ON MAP
 9400

C. Nichols
 C. Dill
 B. Simmons

March 00

39

54.006 Ac.

98+72.34

P.I.
 98+72.34
 $\frac{1}{2}$ " ϕ iron Fd.
 $0^{\circ}21'00''$ Lt.

P.O.T.
 95+00
 R.R. Spk. set

157.7 Ac.

43.83 Ac.

N. $5^{\circ}58'05''$ W.
 E.C.R. 5

1" pipe Fd.
 $0^{\circ}13'00''$ Lt. of E.
 Sta 87+85.31
 Ref: 1952 Survey of
 43.83 Ac. (R-3348)

P.O.T.
 90+00
 R.R. Spk. set

81.918 Ac.

P.I.
 87+80.48
 $\frac{1}{2}$ " ϕ iron Fd.
 $0^{\circ}03'00''$ Lt.

87+80.48

5 Ac.

FB 711

Resurvey Part of C.R. 5
 Rushsylvania North to Co. Line

105+36.49 - P.O.T. - Mine Spk. Fd.

Ref: 1970 Geeslin Survey -

Index No. 2697

(Reset w/ R.R. Spk

15 Aug. 00)

105+06.49 - P.O.T. - R.R. Spk. Fd.

(Reset 15 Aug. 00)

105+00 - P.O.T. - R.R. Spk. set

100+00 - P.O.T. - R.R. Spk. set

98+72.34 - P.I. - 1/2" dia iron Fd. -

Ref: F.R.K. # 707, pg. 31

0°-21'-00" Lt.

(Reset w/ 3/8" dia. capped rebar
 and monument box - 23 Aug. 00)

INDEXED ON MAP
 9480

6664.15'

C. Nichols
 C. Dill
 B. Simmons

March 00

40

1.02 Ac.

105+36.49 #

P.O.T.
 105+36.49
 Mine Spk. Fd.

P.O.T.
 105+06.49
 R.R. Spk. Fd.

P.O.T.
 105+00
 R.R. Spk. set



157.2 Ac.

56.006 Ac.

N. 5°-59'-00" W.
 R.C.R. 51

P.O.T.
 100+00
 R.R. Spk. set

P.I.
 98+72.34
 1/2" dia iron Fd.
 0°-21'-00" Lt.

98+72.34 #

43.83 Ac.

FB 711

Resurvey Part of C.R. 5
 Pennsylvania North to Co. Line

110+05.47 - P.I. - 1" ϕ iron Fd. -

Ref: F.R.K. #707; pg. 32

0°-28'-10" Rt.

(Reset w/ 5/8" dia. capped
 rebar and monument box -
 23 Aug. 00)

110+00 - P.O.T. - R.R. Spk. set

107+56.37 - P.O.T. - Mine Spk. Fd. -

Ref: 1970 Geeslin Survey

Index No. 4697

(Reset w/ R.R. Spk.
 15 Aug. 00)

106+33.21 - P.O.T. - Mag Nail
 set

105+36.49 - P.O.T. - Mine Spk. Fd. -

Ref: 1970 Geeslin Survey -

Index No. 4697

(Reset w/ R.R. Spk.
 15 Aug. 00)

C. Nichols
 C. Dill
 B. Simmons

March 00

41

P 110+05.47

P.O.T. →
 110+00
 R.R. Spk. set

P.I.
 110+05.47
 1" ϕ iron Fd.
 0°-28'-10" Rt.

22.04 Ac.

3/4" ϕ iron Fd.
 1.08' Lt. of R.
 Sta. 108+70.07
 Ref: F.R.K. 707; pg. 31

5.984 Ac.

157.2 Ac.

N. 5°-09'-00" W.
 E.C.E.O.T.

P.O.T.
 107+56.37
 Mine Spk. Fd.

107+56.37 P

1.02 Ac.

P.O.T.
 106+33.21
 Mag Nail Set

106+36.49 P

P.O.T.
 105+36.49
 Mine Spk. Fd.

56.006 Ac.

INDEXED ON MAP
 9400

FB 711

Resurvey Part of C.R. 5
 Ruskykennis North to Co. Line

126+38.40 - P.I. - 1" ϕ iron Fd.

Intersection C.R. 5 w/ T.R. 51-

Ref: F.B.K. # 707; pg. 32 &

F.B.K. # 485; pg. 46

(Sta. 0+00)

3°-31'-25" Rt.

(Set monument box over
 1" ϕ iron - 16 Aug. 00)

125+00 - P.O.T. - R.R. Spk. Set

120+00 - P.O.T. - R.R. Spk. Set

119+88.63 - P.O.T. - 1" Mag Nail Set

115+00 - P.O.T. - R.R. Spk. Set

110+05.47 - P.I. - 1" ϕ iron Fd. -

Ref: F.B.K. # 707; pg. 32

0°-28'-10" Rt.

(Reset w/ 5/8" dia. capped
 rebar and monument box -
 23 Aug. 00)

1632.93'

INDEXED ON MAP
 9480

C. Nichols
 C. Dill
 B. Simmonds

March 00

T.R. 517

T.R. 517

Miami Cemetery

P.I.
 126+38.40
 1" ϕ iron Fd.
 3°-31'-25" Rt.

P.O.T.
 125+00
 R.R. Spk. Fd.

14.99 Ac.

P.O.T.
 120+00
 R.R. Spk. Set

P.O.T.
 119+88.63
 Mag Nail Set

52.4 Ac.

Harrow Tooth Fd.
 0.25' Rt. of E Sta.

119+22.66

Ref: 1974 Georgia Survey
 Index No. 5450

P.O.T.
 115+00
 R.R. Spk. Set

22.04 Ac.

P.I. 110+05.47

157.2 Ac.

P.I.
 110+05.47
 1" ϕ iron Fd.
 0°-28'-10" Rt.

N 0° 30' 55" W

E C.R. 57

INDEXED ON MAP
 9480

FB 711

Resurvey Part of C.R. 5
 Rustsylvania North to Co. Line

7+20.84 - P.I. - $\frac{3}{8}$ " ϕ iron Fd.

Ref: F.B.K. # 485; pg. 46

$1^{\circ}-12'-20"$ Lt.

(Reset w/ $\frac{3}{8}$ " dia. capped
 rebar and monument box -
 14 Aug. 00)

5+00 - P.O.T. - R.R. Spk. set

4+38.16 - P.O.T. - R.R. Spk. Fd.

Ref: 1977 Geeslin Survey

Index No. 4043

(Reset 14 Aug. 00)

1+00 - P.O.T. - R.R. Spk. set

0+00 - P.I. - 1" ϕ iron Fd.

Intersection C.R. 5 w/ T.R. 51

Ref: F.B.K. # 485; pg. 46 &

F.B.K. # 707; pg. 32

(Sta. 126+38.40 by

this survey)

$3^{\circ}-31'-25"$ Rt.

(Set monument box over
 1" ϕ iron - 14 Aug. 00)

INDEXED ON MAP
 9480

C. Nichols
 C. Dill
 B. Simmons

March 00

43



P.I.
 7+20.84
 $\frac{3}{8}$ " ϕ iron Fd.
 $1^{\circ}-12'-20"$ Lt.

6.17 Ac.

P.O.T.
 5+00
 R.R. Spk. set

4+38.16

60 Ac.

P.O.T.
 4+38.16
 R.R. Spk. Fd.

6.17 Ac.

$N. 1^{\circ}-59'-30"$ W.
 E.C.R. 51

P.O.T.
 1+00
 R.R. Spk. set

P.I.
 0+00
 1" ϕ iron Fd.
 $3^{\circ}-31'-25"$ Rt.

T.R. 51

T.R. 51

FB 711

Resurvey Part of C.R. 5
Pennsylvania North to Co. Line.13+16.43 - P.I. - $\frac{5}{8}$ " ϕ iron Fd. -

Ref: F.B.K. # 485, pg. 16

 $0^{\circ}44'58''$ Rt.(Reset w/ $\frac{5}{8}$ " dia. capped
rebar and monument box -
14 Aug. 00)

13+00 - P.O.T. - R.R. Spk. set

14+67.43 - P.O.T. - Mag Nail set

14+00 - P.O.T. - R.R. Spk. set

8+73.47 - P.O.T. - R.R. Spk. Fd.

Ref. 1977 Geeslin Survey

Index No. 60A3

(Reset 14 Aug. 00)

8+00 - P.O.T. - R.R. Spk. set

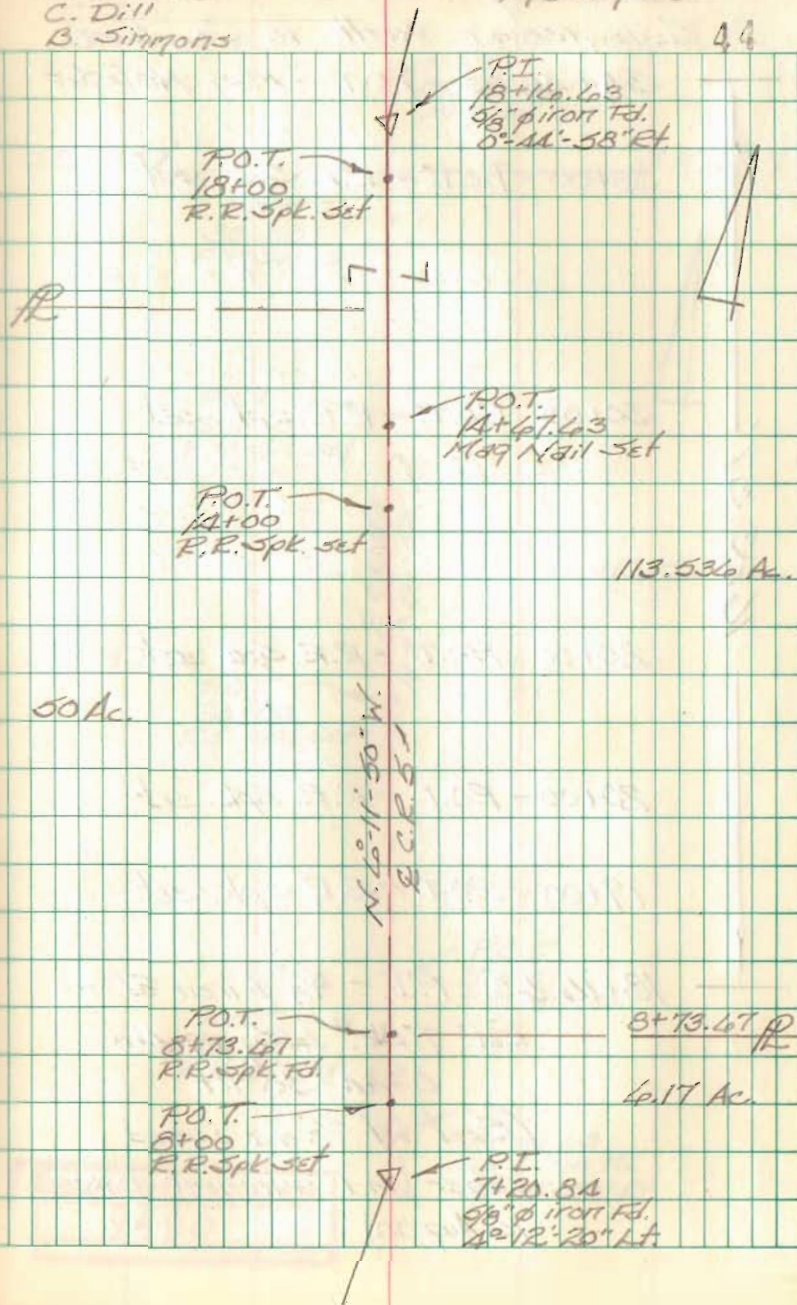
7+20.84 - P.I. - $\frac{5}{8}$ " ϕ iron Fd. -

Ref: F.B.K. # 485; pg. 16

 $4^{\circ}12'20''$ Lt.(Reset w/ $\frac{5}{8}$ " dia. capped
rebar and monument box -
14 Aug. 00)INDEXED ON MAP
9400C. Nichols
C. Dill
B. Simmons

March 00

44



FB 711

Resurvey Part of C.R. 5
 Pennsylvania North to Co. Line

34+40.00 - P.O.T. - Mag Nail Set

33+00 - P.O.T. - R.R. Spk. set

30+00 - P.O.T. - R.R. Spk. set

25+00 - P.O.T. - R.R. Spk. set

20+00 - P.O.T. - R.R. Spk. set

19+00 - P.O.T. - R.R. Spk. set

18+14.63 - P.I. - $\frac{5}{8}$ " ϕ iron fd. -

Ref: F.Bk. # 485; pg. 146

$0^{\circ}44'58''$ Rt.

(Reset w/ $\frac{5}{8}$ " dia. capped
 rebar and monument box -
 16 Aug. 00)

C. Nichols
 C. Dill
 B. Simmons

March 00

05

P.O.T.
 34+40.00
 Mag Nail Set

S.R. 2137

S.R. 2137

P.O.T.
 33+00
 R.R. Spk. set

P.O.T.
 30+00
 R.R. Spk. set

P.O.T.
 25+00
 R.R. Spk. set

P.O.T.
 19+00
 R.R. Spk. set

P.O.T.
 20+00
 R.R. Spk. set

P.I.
 18+14.63
 $\frac{5}{8}$ " ϕ iron fd.
 $0^{\circ}44'58''$ Rt.

113.53 1/2 Ac.

INDEXED ON MAP
 9480

FB 711

Resurvey Part of C.R. 5
 Pennsylvania North to Co. Line

42+96.29 - P.O.T. - R.R. Spk. Fd.
 shown as Sta 43+00
 in F.R.K. # 485; pg. 47

40+86.60 - P.O.T. - R.R. Spk. Fd.
 Ref: 1961 Dodson Survey
 Index No. 2586

38+96.34 - P.O.T. - R.R. Spk. Fd.
 shown as Sta 39+00 in
 F.R.K. # 485; pg. 47

37+40.61 - P.O.T. - R.R. Spk. Fd.
 Ref: 1961 Dodson Survey
 Index No. 2586

35+45.51 - P.O.T. - R.R. Spk. Fd.
 Ref: 1961 Dodson Survey
 Index No. 2586

34+40.00 - P.O.T. - Mag Nail Set

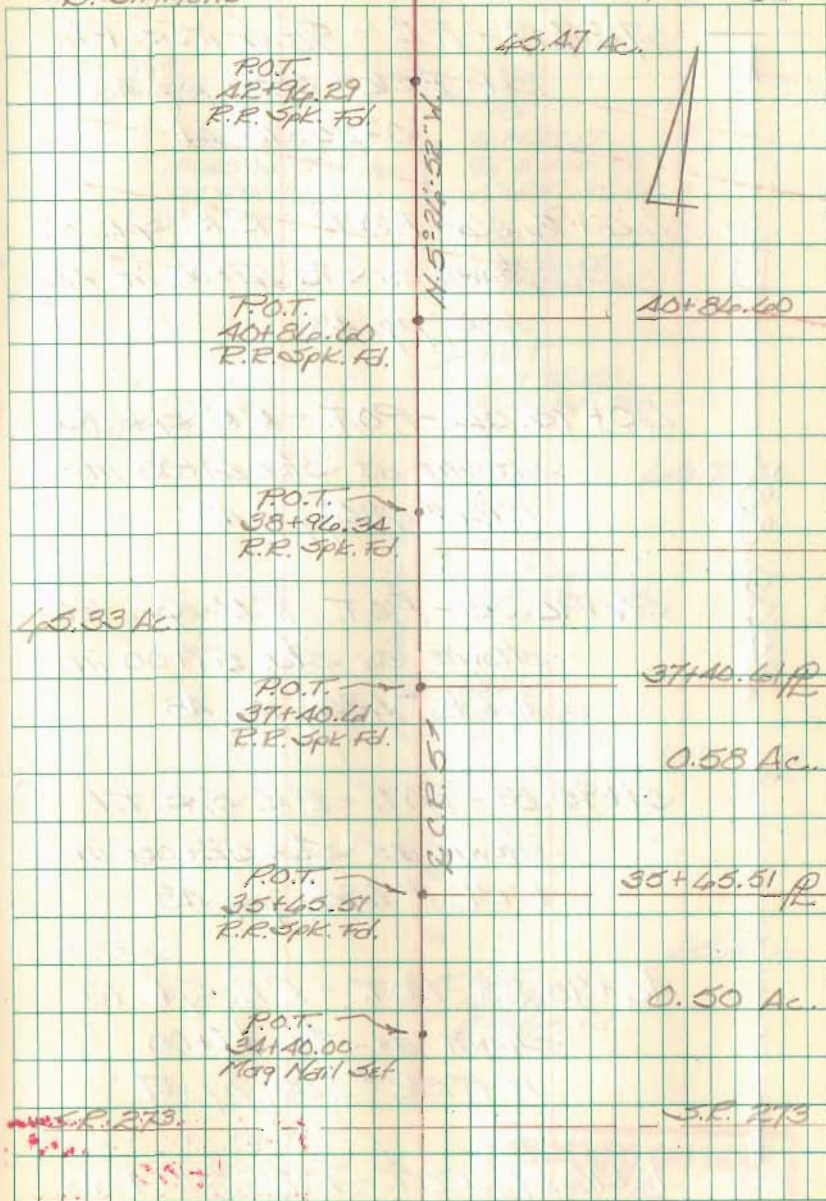
856.29'

INDEXED ON MAP
 9480

C. Nichols
 C. Dill
 B. Simmons

March 00

46



FB 711

Resurvey Part of C.R. 5
Rushsylvania North to Co. Line

47+97.17 - P.I. - $\frac{1}{8}$ " ϕ iron Fd.

Ref: F.B.K. # 485; pg. 48

0°-25'-10" Lt.

46+96.06 - P.O.T. - R.R. Spk. Fd.

shown as Sta. 47+00 in F.B.K. #

485; pg. 48

40+95.52 - P.O.T. - R.R. Spk. Fd.

shown as Sta. 41+00 in

F.B.K. # 485; pg. 48

54+96.03 - P.O.T. - R.R. Spk. Fd.

shown as Sta. 57+00 in

F.B.K. # 485; pg. 48

51+95.87 - P.O.T. - R.R. Spk. Fd.

shown as Sta. 52+00 in

F.B.K. # 485; pg. 48

46+95.83 - P.O.T. - R.R. Spk. Fd.

shown as Sta. 47+00

in F.B.K. # 485; pg. 47

42+96.29 - P.O.T. - R.R. Spk. Fd.

2500.88'

C. Nichols
C. Dill
B. Simmons

March 00

4

V.M.S. 9991
V.M.S. 9995

Stone Fd.
0.40' West of iron
on survey line

P.I.
47+97.17
 $\frac{1}{8}$ " ϕ iron Fd.
0°-25'-10" Lt.

P.O.T.
46+96.06
R.R. Spk. Fd.

P.O.T.
40+95.52
R.R. Spk. Fd.

P.O.T.
54+96.03
R.R. Spk. Fd.

P.O.T.
51+95.87
R.R. Spk. Fd.

P.O.T.
46+95.83
R.R. Spk. Fd.

P.O.T.
42+96.29
R.R. Spk. Fd.

44.37 Ac.

48.78 Ac.

45.33 Ac.

45.47 Ac.

INDEXED ON MAP
9400

FB 711

Resurvey Part of C.R. 5
 Pennsylvania North to Co. Line

73+63.11 - P.O.T. - 1" Mag Nail Set

INDEXED ON MAP
9400

556.24'

48+96.11 - P.O.T. - R.R. Spk. Fd.
 Shown as Sta. 49+00
 in F.B.K. # 485; pg. 49

67+97.17 - P.I. - 5/8" ϕ iron Fd.
 Ref: F.B.K. # 485; pg. 48
 0°-25'-10" Lt.

V.M.S. 9991

C. Nichols
 C. Dill
 B. Simmons

March 00

43

P.O.T.
 73+63.11
 1" Mag Nail Set

R.R. Spk. Fd.
 0.23' Lt. of R.
 Sta. 73+41.28
 Ref: 1900 Lec
 Survey - Index
 No. 4510

R.R. Spk. Fd.
 0.30' Lt. of R.
 Sta. 71+91.27
 Ref: 1900 Lec
 Survey - Index
 No. 4510

R.R. Spk. Fd.
 0.20' Lt. of R.
 Sta. 70+40.28
 Ref: 1989 Lec Survey
 Index No. 7941

R.R. Spk. Fd.
 0.14' Lt. of R. Sta.
 69+47.73
 Ref: 1989 Lec Survey
 Index No. 7941

P.O.T.
 48+96.11
 R.R. Spk. Fd.

V.M.S. 9991

Spk. Fd.
 Ref: F.B.K. # 485;
 pg. 48

P.I.
 67+97.17
 5/8" ϕ iron Fd.
 0°-25'-10" Lt.

64.37
 Ac.

V.M.S. 9976
 18.78 Ac.

1.005 Ac.

117.902 Ac.

0.408
 Ac.

1.005 Ac.

FB 711

Resurvey Part of C.R. 5
 Rushsylvania North to Co. Line

82+95.92 - P.I. - $\frac{1}{2}$ " ϕ iron Fd.

Ref: F.Bk. # 485; pg 49

10°-21'-15" Rt.

81+40.54 - P.O.T. - R.R. Spk. Fd.

shown as a P.C. (Sta.

81+44.6) in F.Bk. # 485; pg 49

77+96.01 - P.O.T. - R.R. Spk. Fd.

shown as Sta. 78+00 in

F.Bk. # 485; pg 49

73+96.27 - P.O.T. - R.R. Spk. Fd.

shown as Sta. 74+00

in F.Bk. # 485; pg 49

73+53.41 - P.O.T. - Mag Nail Set

C. Nichols
 C. Dill
 B. Simmons

March 00

49

P.I.
 82+95.92
 $\frac{1}{2}$ " ϕ iron Fd.
 10°-21'-15" Rt.

P.O.T.
 81+40.54
 R.R. Spk. Fd.

N. of 22° or W.
 E.C.E.S.T.

117,902 Ac.

P.O.T.
 77+96.01
 R.R. Spk. Fd.

P.O.T.
 73+96.27
 R.R. Spk. Fd.

P.O.T.
 73+53.41
 Mag Nail Set

INDEXED ON MAP
 9480

FB 711

Resurvey Part of C.R. 5
 Rushsylvania North to Co Line

85+48.93 - Concrete monument
 in monument box -
 Intersection C.R. 5 w/
 County line. - Ref:
 F.B.K. # 485; pg. 49

273.01'

84+51.37 - P.O.T. - R.R. Spk. Fd. -
 shown as a P.T. (Sta 84+55.9)
 in F.B.K. # 485; pg. 49

INDEXED ON MAP
 9400

82+95.92 - P.I. - 1/2" ϕ iron Fd. -
 Ref: F.B.K. # 485; pg. 49
 10°-21'-15" Rt.

C. Nichols
 C. Dill
 B. Simmons
 Hardin Co.

March 00

50

County line

Conc. Mon w/ Mon. box
 85+48.93

117.902 Ac.

E.C.R. 57

P.O.T.
 84+51.37
 R.R. Spk. Fd.

N. 22° 21' 15" E.

P.I.
 82+95.92
 1/2" ϕ iron Fd.
 10°-21'-15" Rt.

INDEXED ON MAP