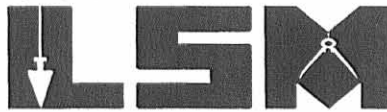


REC'D 2-20-02 SMY OK

# Lee Surveying and Mapping Co., Inc.

Land Surveys • Topography • Subdivisions • Construction Layout

117 N. Madriver St.  
Bellefontaine OH 43311



Phone: (937) 593-7335  
Fax: (937) 593-7444

## DIERKSHEIDE 5.000 ACRES

Lying in Virginia Military Survey 13446, Rushcreek Township, Logan County, Ohio.

Being out of the Melvin G. Dierksheide original 40.0 acre tract as deeded and described in Volume 375, Page 808 of the Logan County Records of Deeds and being more particularly described as follows:

Beginning at a 1-1/2 inch square iron bar found on the center-line of County Highway 111 at the northwest corner of Virginia Military Survey 13446.

THENCE, with the north line of Virginia Military Survey 13446 and the center-line of County Highway 111 (50 feet wide), N 78°-00'-00" E, a distance of 325.00 feet to a MAG nail set.

THENCE, S 12°-28'-19" E, a distance of 670.25 feet to a 5/8 inch iron rod set, passing a 5/8 inch iron rod set at 25.00 feet.

THENCE, S 78°-00'-00" W, a distance of 325.00 feet to a 5/8 inch iron rod set.

THENCE, with the west line of Virginia Military Survey 13446 and the east line of the Leon Burkholder 12.505 acre tract (O.R. 291, Pg. 208), N 12°-28'-19" W, a distance of 670.25 feet to the point of beginning, passing a 5/8 inch iron rod set at 645.25 feet.

Containing 5.000 acres, of which 0.186 acre is within the highway right-of-way.

The basis for bearings is the north line of Virginia Military Survey 13446, being N 78°-00'-00" E, and all other bearings are from angles and distances measured in a field survey by Lee Surveying and Mapping Co., Inc. on February 12, 2002.

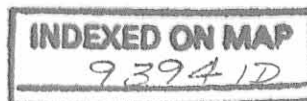
Description prepared by:



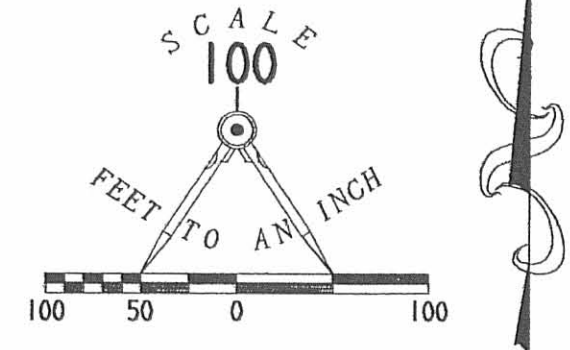
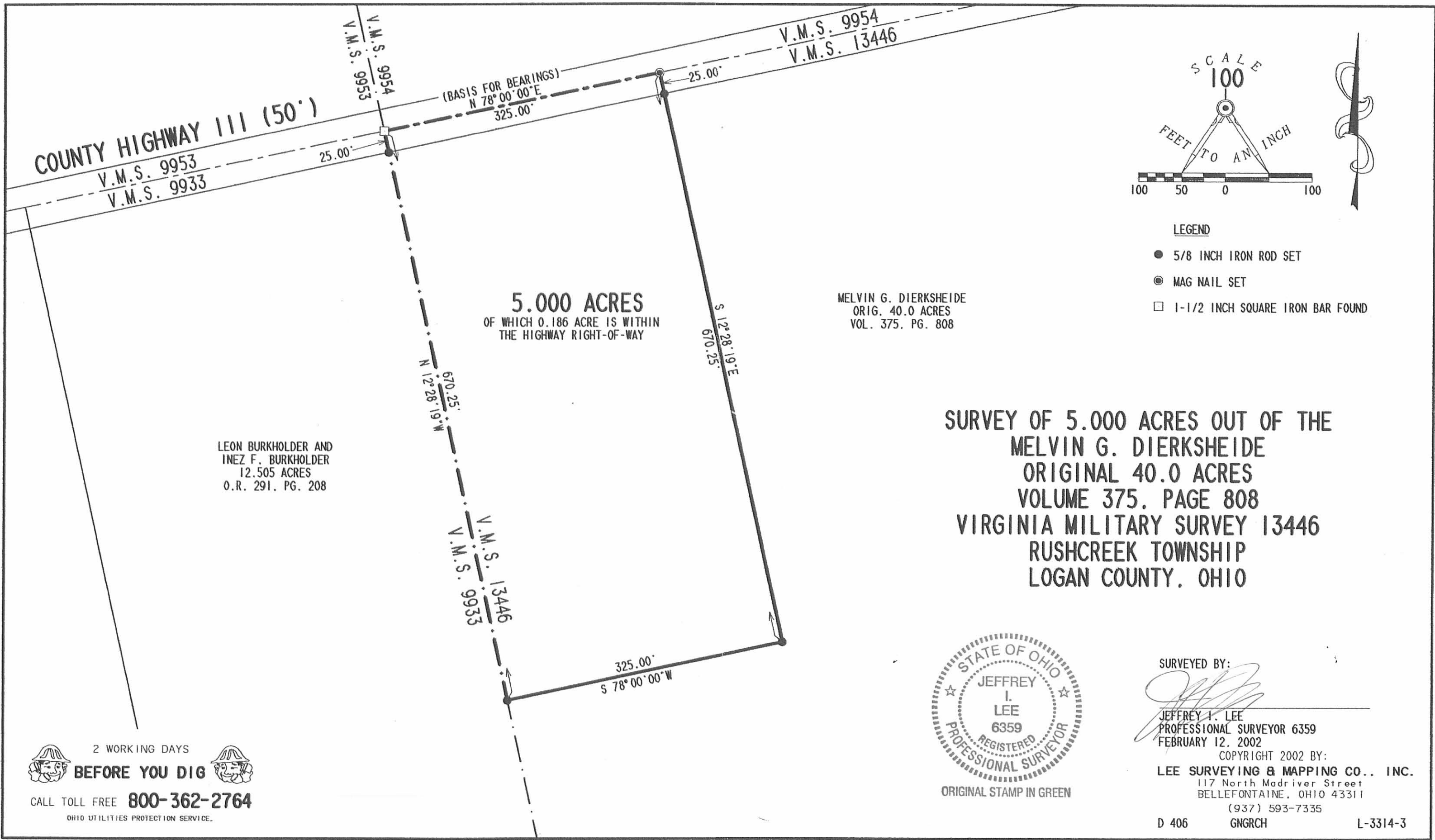
ORIGINAL STAMP IN GREEN

*Jeffrey I. Lee*  
Jeffrey I. Lee  
Professional Surveyor 6359  
February 18, 2002

L-3314



REC'D 2-20-02 SJM OK



- LEGEND**
- 5/8 INCH IRON ROD SET
  - ⊙ MAG NAIL SET
  - 1-1/2 INCH SQUARE IRON BAR FOUND

**5.000 ACRES**  
 OF WHICH 0.186 ACRE IS WITHIN  
 THE HIGHWAY RIGHT-OF-WAY

MELVIN G. DIERKSHEIDE  
 ORIG. 40.0 ACRES  
 VOL. 375. PG. 808

LEON BURKHOLDER AND  
 INEZ F. BURKHOLDER  
 12.505 ACRES  
 O.R. 291. PG. 208

**SURVEY OF 5.000 ACRES OUT OF THE  
 MELVIN G. DIERKSHEIDE  
 ORIGINAL 40.0 ACRES  
 VOLUME 375. PAGE 808  
 VIRGINIA MILITARY SURVEY 13446  
 RUSHCREEK TOWNSHIP  
 LOGAN COUNTY, OHIO**



ORIGINAL STAMP IN GREEN

SURVEYED BY:  
  
 JEFFREY I. LEE  
 PROFESSIONAL SURVEYOR 6359  
 FEBRUARY 12, 2002

COPYRIGHT 2002 BY:  
**LEE SURVEYING & MAPPING CO., INC.**  
 117 North Madriver Street  
 BELLEFONTAINE, OHIO 43311  
 (937) 593-7335

D 406      GNGRCH      L-3314-3

2 WORKING DAYS  
**BEFORE YOU DIG**  
 CALL TOLL FREE **800-362-2764**  
 OHIO UTILITIES PROTECTION SERVICE.

**INDEXED ON MAP**  
 9394