

Received 12-7-99 OKYCH

Lee Surveying and Mapping Co., Inc.

Land Surveys • Topography • Subdivisions • Construction Layout

117 N. Madriver St.
Bellefontaine OH 43311



Phone: (937) 593-7335
Fax: (937) 593-7444

CARNES 145.758 ACRES

Lying in Virginia Military Survey 9974, Richland and Rushcreek Townships, Logan County, Ohio.

Being all of the Milan G. Carnes original 144.68 acre tract as deeded and described in Official Record 56, Page 47 of the Logan County Records of Deeds and being more particularly described as follows:

Beginning at a 5/8 inch iron rod found at the northeast corner of Virginia Military Survey 9973 and the center-line extended of Ohio Route 273, which is also Point of Intersection Station 310+64.60, (Logan County Engineers' File L-13, Page 7 of 8).

THENCE, with the east lines of Virginia Military Survey 9973 and Countrytyme Grove City Ltd 29.826 acre tract, (O.R. 402, Pg. 932, Tract F), and the west line of the James M. Miller or Joy K. Miller, Trustees of the Miller Family Trust, original 68.43 acre tract, (O.R. 375, Pg 348), S 6°-17'-32" E, a distance of 2124.17 feet to a 5/8 inch iron rod set at the TRUE POINT OF BEGINNING, passing a 5/8 inch iron rod found at 63.93 feet.

THENCE, with the lines of the said 68.43 acre tract, the following four (4) courses:

N 83°-15'-26" E, a distance of 1420.09 feet to a 5/8 inch iron rod set.

S 14°-43'-20" E, a distance of 119.79 feet to a 5/8 inch iron rod set.

N 66°-31'-40" E, a distance of 274.56 feet to a 5/8 inch iron rod set.

N 6°-04'-20" W, a distance of 39.60 feet to a 5/8 inch iron rod set.

THENCE, with the south line of the Robert E. Kerns original 38.55 acre tract, (Vol. 344, Pg. 150), N 79°-28'-35" E, a distance of 832.75 feet to a 5/8 inch iron rod set.

THENCE, with the west lines of the Keith K. Barns original 45.91 acre tract, (O.R. 214, Pg. 259, Tract II), and the Leroy K. Barns 2.00 acre tract, (O.R. 135, Pg. 174), S 6°-37'-27" E, a distance of 2560.80 feet to a stone found with brick, passing a 5/8 inch iron rod found at 2540.78 feet.

THENCE, with the center-line of Township Road 51 (40 feet wide), S 83°-28'-26" W, a distance of 2545.41 feet to a railroad spike found.

THENCE, with the east lines of Virginia Military Survey 9973 and the D. Russell Forsythe, Trustee of the D. Russell Forsythe Living Trust, original 97.36 acre tract, (O.R. 220, Pg. 926 and 932, Tract I), N 6°-17'-32" W, a distance of 2496.34 feet to the point of beginning, passing a 5/8 inch iron rod set at 20.00 feet.

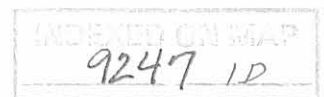
Containing 145.758 acres, of which 1.274 acres are within the highway right-of-way, 0.818 acre is in Richland Township and 144.940 acres are in Rushcreek Township.

The basis for bearings is the center-line of Ohio Route 273, being S 73°-07'-27" E, and all other bearings are from angles and distances measured in a field survey by Lee Surveying and Mapping Co., Inc. on November 30, 1999.

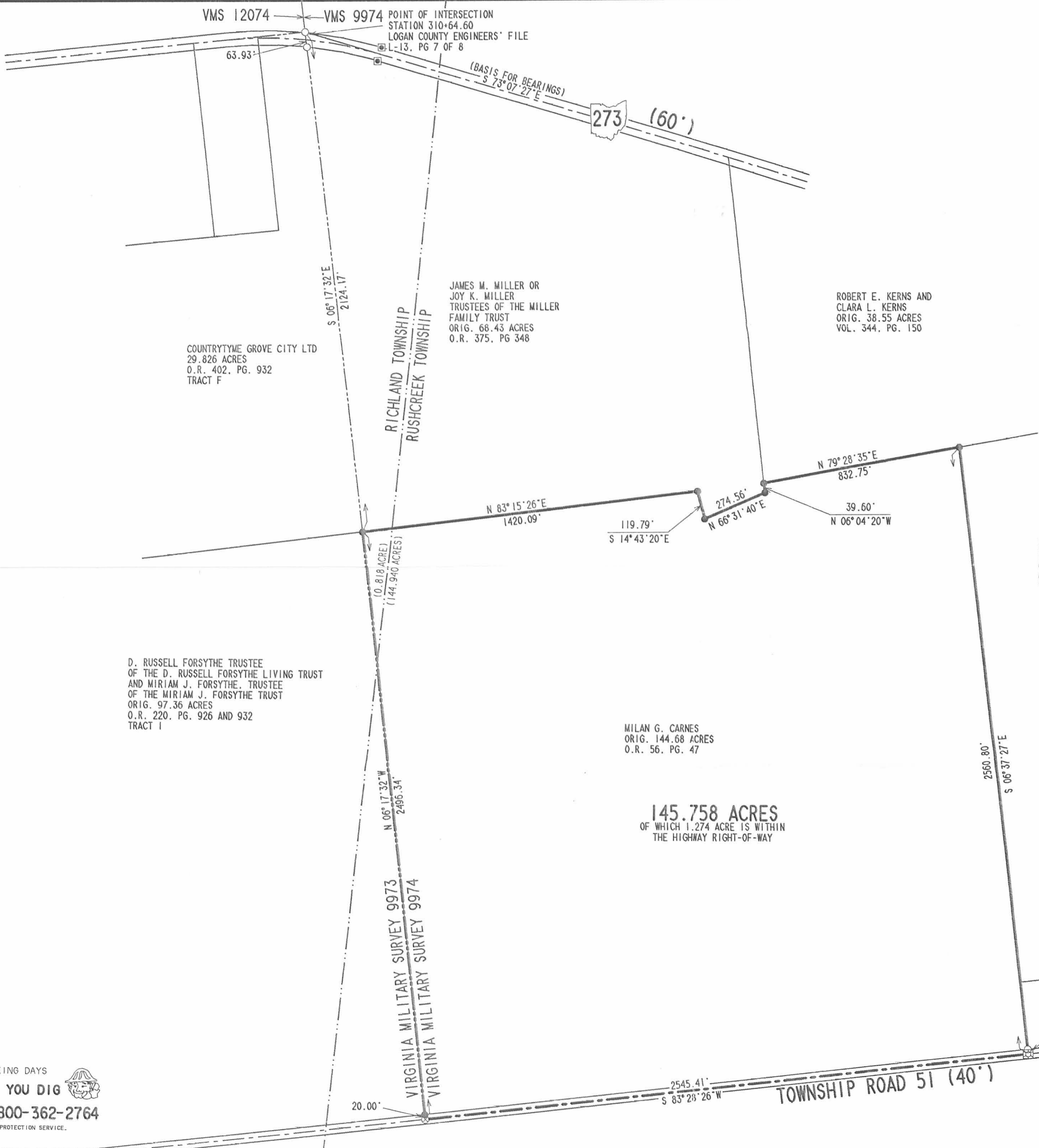


Description prepared by:

Jeffrey I. Lee
Jeffrey I. Lee
Professional Surveyor 6359
December 1, 1999



ORIGINAL STAMP IN GREEN



VMS 12074 VMS 9974 POINT OF INTERSECTION
STATION 310+64.60
LOGAN COUNTY ENGINEERS' FILE
L-13, PG 7 OF 8

(BASIS FOR BEARINGS)
S 73° 07' 27" E

273 (60')

COUNTRYTME GROVE CITY LTD
29.826 ACRES
O.R. 402, PG. 932
TRACT F

JAMES M. MILLER OR
JOY K. MILLER
TRUSTEES OF THE MILLER
FAMILY TRUST
ORIG. 68.43 ACRES
O.R. 375, PG 348

ROBERT E. KERNS AND
CLARA L. KERNS
ORIG. 38.55 ACRES
VOL. 344, PG. 150

RICHLAND TOWNSHIP
RUSHCREEK TOWNSHIP

N 83° 15' 26" E
1420.09'

119.79'
S 14° 43' 20" E

274.56'
N 66° 31' 40" E

N 79° 28' 35" E
832.75'

39.60'
N 06° 04' 20" W

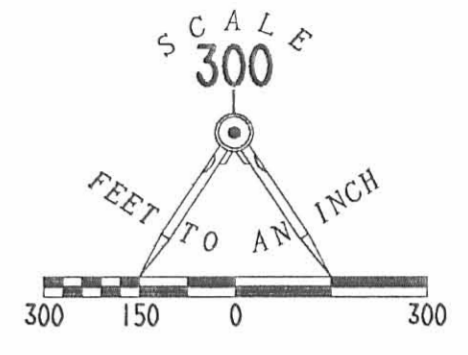
KEITH K. BARNS AND
KAREN E. BARNS
ORIG. 45.91 ACRES
O.R. 214, PG. 259
TRACT 11

D. RUSSELL FORSYTHE TRUSTEE
OF THE D. RUSSELL FORSYTHE LIVING TRUST
AND MIRIAM J. FORSYTHE, TRUSTEE
OF THE MIRIAM J. FORSYTHE TRUST
ORIG. 97.36 ACRES
O.R. 220, PG. 926 AND 932
TRACT 1

MILAN G. CARNES
ORIG. 144.68 ACRES
O.R. 56, PG. 47

145.758 ACRES
OF WHICH 1.274 ACRE IS WITHIN
THE HIGHWAY RIGHT-OF-WAY

RETRACEMENT SURVEY OF THE
MILAN G. CARNES
ORIGINAL 144.68 ACRE TRACT
OFFICIAL RECORD 56, PAGE 47
VIRGINIA MILITARY SURVEY 9974
RICHLAND AND RUSHCREEK TOWNSHIP
LOGAN COUNTY, OHIO



LEGEND

- 5/8 INCH IRON ROD SET
- 5/8 INCH IRON ROD FOUND
- CONCRETE RIGHT-OF-WAY MONUMENT FOUND
- ⊙ MAG NAIL SET
- ⊗ RAILROAD SPIKE FOUND
- ⊠ STONE FOUND WITH BRICK



ORIGINAL STAMP IN GREEN

SURVEYED BY:

Jeffrey I. Lee
JEFFREY I. LEE
PROFESSIONAL SURVEYOR 6359
NOVEMBER 30, 1999

COPYRIGHT 1999 BY:
LEE SURVEYING & MAPPING CO., INC.
117 North Madriver Street
BELLEFONTAINE, OHIO 43311
(937) 593-7335

D 365 ADEPEW2

L-2607-2

2 WORKING DAYS
BEFORE YOU DIG
CALL TOLL FREE 800-362-2764
OHIO UTILITIES PROTECTION SERVICE.

9247 1P