



Lee Surveying and Mapping Co.



Farm Surveys • Lot Surveys • Topography • Subdivisions • Construction Layout

143 EAST COLUMBUS AVENUE
BELLEFONTAINE, OHIO 43311

(513) 593-7335

JEFFREY I. LEE, P.S.

MARTHA G. MILLER 1.792 ACRES

Lying in Virginia Military Survey 9933, Rushcreek Township, Logan County, Ohio.

Being out of the Martha G. Miller 98.19 acre tract as deeded and described in Volume 297, Page 278, Tract I of the Logan County Records of Deeds and being more particularly described as follows:

Beginning at a railroad spike found on the center-line of County Highway 113 on the east line of the said 98.19 acre tract.

THENCE, with the center-line of County Highway 113 (60 feet wide), S 84°-15'-00" W, a distance of 353.49 feet to a railroad spike set at the TRUE POINT OF BEGINNING.

THENCE, with the center-line of County Highway 113, S 84°-15'-00" W, a distance of 169.36 feet to a railroad spike set.

THENCE, N 8°-09'-40" W, a distance of 462.94 feet to a 5/8 inch iron rod set.

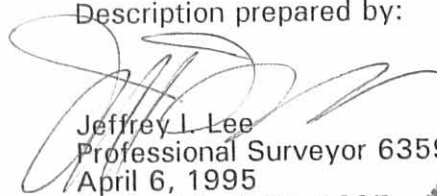
THENCE, N 85°-18'-30" E, a distance of 169.52 feet to a 5/8 inch iron rod set.

THENCE, S 8°-09'-40" E, a distance of 459.81 feet to the point of beginning.

Containing 1.792 acres of which 0.117 acre is within the highway right-of-way.

The basis for bearings is based upon the center-line of County Highway 113 being S 84°-15'-00" W, and all other bearings are from angles and distances measured in a field survey by Lee Surveying and Mapping Company on April 4, 1995.

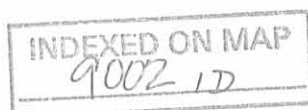
Description prepared by:


Jeffrey I. Lee
Professional Surveyor 6359
April 6, 1995
Revised April 17, 1995

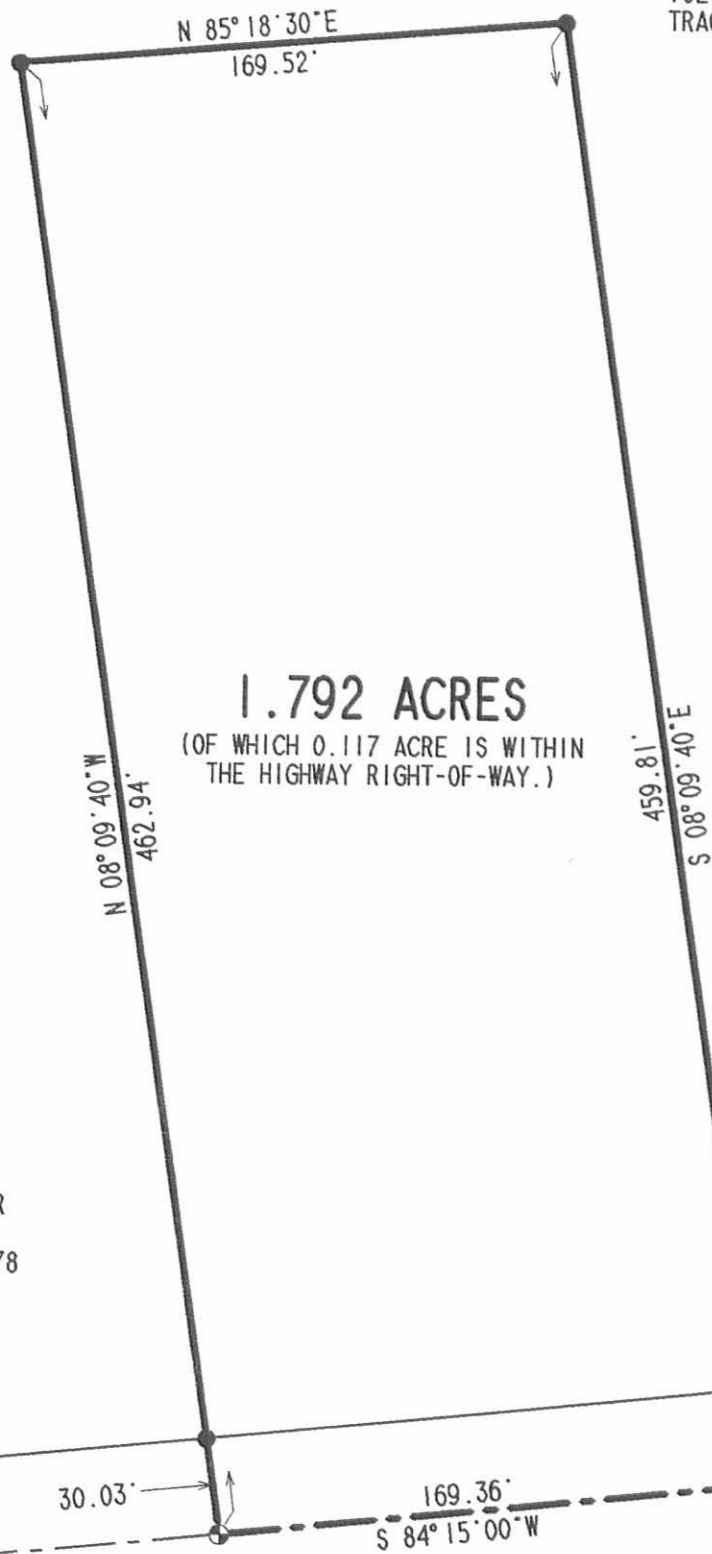


L 2279

ORIGINAL STAMP IN GREEN



MARTHA G. MILLER
 98.19 ACRES
 VOL. 297, PG. 278
 TRACT 1

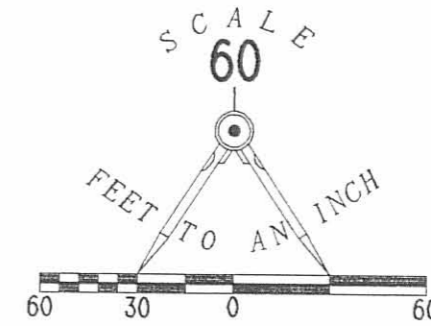


1.792 ACRES
 (OF WHICH 0.117 ACRE IS WITHIN
 THE HIGHWAY RIGHT-OF-WAY.)

**SURVEY OF 1.792 ACRES OUT OF
 THE MARTHA G. MILLER
 98.19 ACRES
 VOLUME 297, PAGE 278, TRACT 1
 VIRGINIA MILITARY SURVEY 9933
 RUSHCREEK TOWNSHIP
 LOGAN COUNTY, OHIO**

MARTHA G. MILLER
 98.19 ACRES
 VOL. 297, PG. 278
 TRACT 1

MARTHA G. MILLER
 98.19 ACRES
 VOL. 297, PG. 278
 TRACT 1



LEGEND

- ⊗ RAILROAD SPIKE FOUND
- ⊕ RAILROAD SPIKE SET
- 5/8" IRON ROD SET

REFERENCES

LOGAN COUNTY ENGINEER'S FIELD BOOK 700, PAGE 51.
 LOGAN COUNTY MAP ROOM DRAWER "R", FILE NUMBERS
 3821, 6852, AND 7579.

S 84° 41' 30" W
COUNTY HIGHWAY 113 (60')

SURVEYED BY:

Jeffrey I. Lee
 JEFFREY I. LEE
 PROFESSIONAL SURVEYOR 6359
 APRIL 4, 1995



COPYRIGHT 1995 BY:
LEE SURVEYING & MAPPING CO.
 143 East Columbus Avenue
 BELLEFONTAINE, OHIO 43311
 (513) 593-7335

ORIGINAL STAMP IN GREEN

D255 DKMILLER L 2279-3
 REV. APRIL 17, 1995

2 WORKING DAYS
BEFORE YOU DIG
 CALL TOLL FREE **800-362-2764**
 OHIO UTILITIES PROTECTION SERVICE.

INDEXED ON MAP
 9002 1P

REC'D 10-11-00 SWM OK ✓

Lee Surveying and Mapping Co., Inc.

Land Surveys • Topography • Subdivisions • Construction Layout

117 N. Madriver St.
Bellefontaine OH 43311



Phone: (937) 593-7335
Fax: (937) 593-7444

MILLER 2.463 ACRES

Lying in the Virginia Military Survey 9933, Rushcreek Township, Logan County, Ohio.

Being out of the Martha G. Miller original 98.19 acre tract as deeded and described in Vol. 297, Pg. 278, Tract I of the Logan County Records of Deeds and being more particularly described as follows:

Beginning at a MAG nail found at a point on the north line of the Virginia Military Survey 9933, at the intersection of the center-lines of U.S. Route 68 (width varies) and County Highway 111 (50 feet wide).

THENCE, N 78°-20'-18" E, with the north line of Virginia Military Survey 9933, and the center-line of County Highway 111 a distance of 539.59 feet to a MAG nail set, passing a MAG nail set at 251.66 feet.

THENCE, with the west line of the Michael Roby 11.00 acre tract (Vol. 403, Page 920), S 11°-25'-07" E, a distance of 502.96 feet to a 5/8 inch iron rod set at the TRUE POINT OF BEGINNING, passing a 5/8 inch iron rod set at 25.00 feet.

THENCE, with the south line of said 11.00 acre tract, N 78°-00'-04" E, a distance of 540.23 feet to a 5/8 inch iron rod set.

THENCE, S 12°-39'-24" E, a distance of 233.87 feet to a 5/8 inch iron rod set.

THENCE, S 82°-40'-26" W, a distance of 382.21 feet to a 5/8 inch iron rod set.

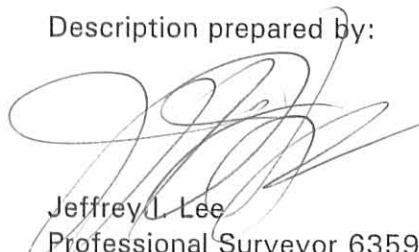
THENCE, N 69°-11'-33" W, a distance of 193.88 feet to a 5/8 inch iron rod set.

THENCE, N 11°-25'-07" W, at distance of 97.68 feet to the point of beginning.

Containing 2.463 acres.

The basis for bearings is the north line of the Virginia Military Survey 9933 being, N 78°-20'-18" E, and all other bearings are from angles and distances measured in a field survey by Lee Surveying and Mapping Co., Inc. on September 5, 2000.

Description prepared by:


Jeffrey L. Lee
Professional Surveyor 6359
September 20, 2000



ORIGINAL STAMP IN GREEN L-3019

INDEXED ON MAP
9002 2D-1

REC'D 10-12-00 ONLY QNV

Lee Surveying and Mapping Co., Inc.

Land Surveys • Topography • Subdivisions • Construction Layout

117 N. Madriver St.
Bellefontaine OH 43311



Phone: (937) 593-7335
Fax: (937) 593-7444

MILLER 3.577 ACRES

Lying in the Virginia Military Survey 9933, Rushcreek Township, Logan County, Ohio.

Being out of the Martha G. Miller original 98.19 acre tract as deeded and described in Vol. 297, page 278 Tract I of the Logan County Records of Deeds and being more particularly described as follows:

Beginning at a MAG nail found at a point on the north line of the Virginia Military Survey 9933, at the intersection of the center-lines of U.S. Route 68 and County Highway 111 (50 feet wide).

THENCE, with the north line of Virginia Military Survey 9933, and the center-line of County Highway 111, N 78°-20'-18" E, a distance of 251.66 feet to a MAG nail set at the TRUE POINT OF BEGINNING.

THENCE, with the north line of Virginia Military Survey 9933, and the center-line of County Highway 111, N 78°-20'18" E, a distance of 287.93 feet to a MAG nail set.

THENCE, with the west line of the Michael Roby 11.00 acre tract (Vol.403, Page 920), S 11°-25'-07" E, a distance of 600.65 feet to a 5/8 inch iron rod set, passing 5/8 inch iron rods set at 25.00 feet and 502.96 feet.

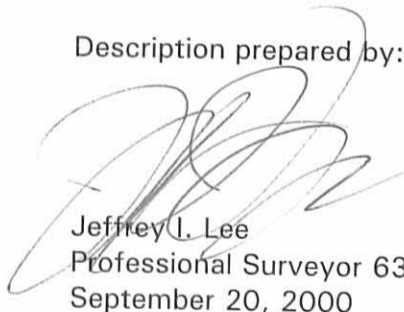
THENCE, N 83°-13'-08" W, a distance of 289.31 feet to a 5/8 inch iron rod set.

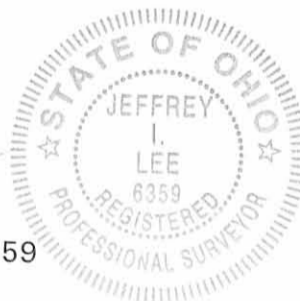
THENCE, N 12°-53'-27" W. a distance of 509.23 feet to the point of beginning, passing a 5/8 inch iron rod set at 484.22 feet.

Containing 3.577 acres of which 0.165 acre is within the highway right-of-way.

The basis for bearings is the north line of Virginia Military Survey 9933 being, N 78°-20'-18" E, and all other bearings are from angles and distances measured in a field survey by Lee Surveying and Mapping Co., Inc. on September 5, 2000.

Description prepared by:


Jeffrey I. Lee
Professional Surveyor 6359
September 20, 2000



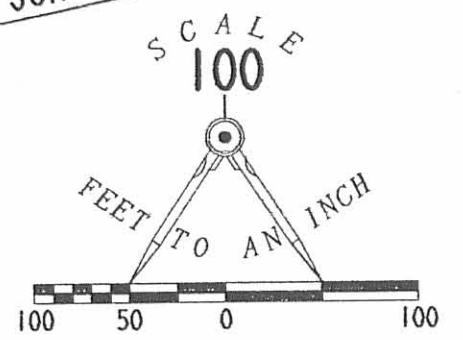
ORIGINAL STAMP IN GREEN L-3019

INDEXED ON MAP
9002 2D-2

REC'D 10-11-00 SM OK

VIRGINIA MILITARY SURVEY 9953
VIRGINIA MILITARY SURVEY 9933

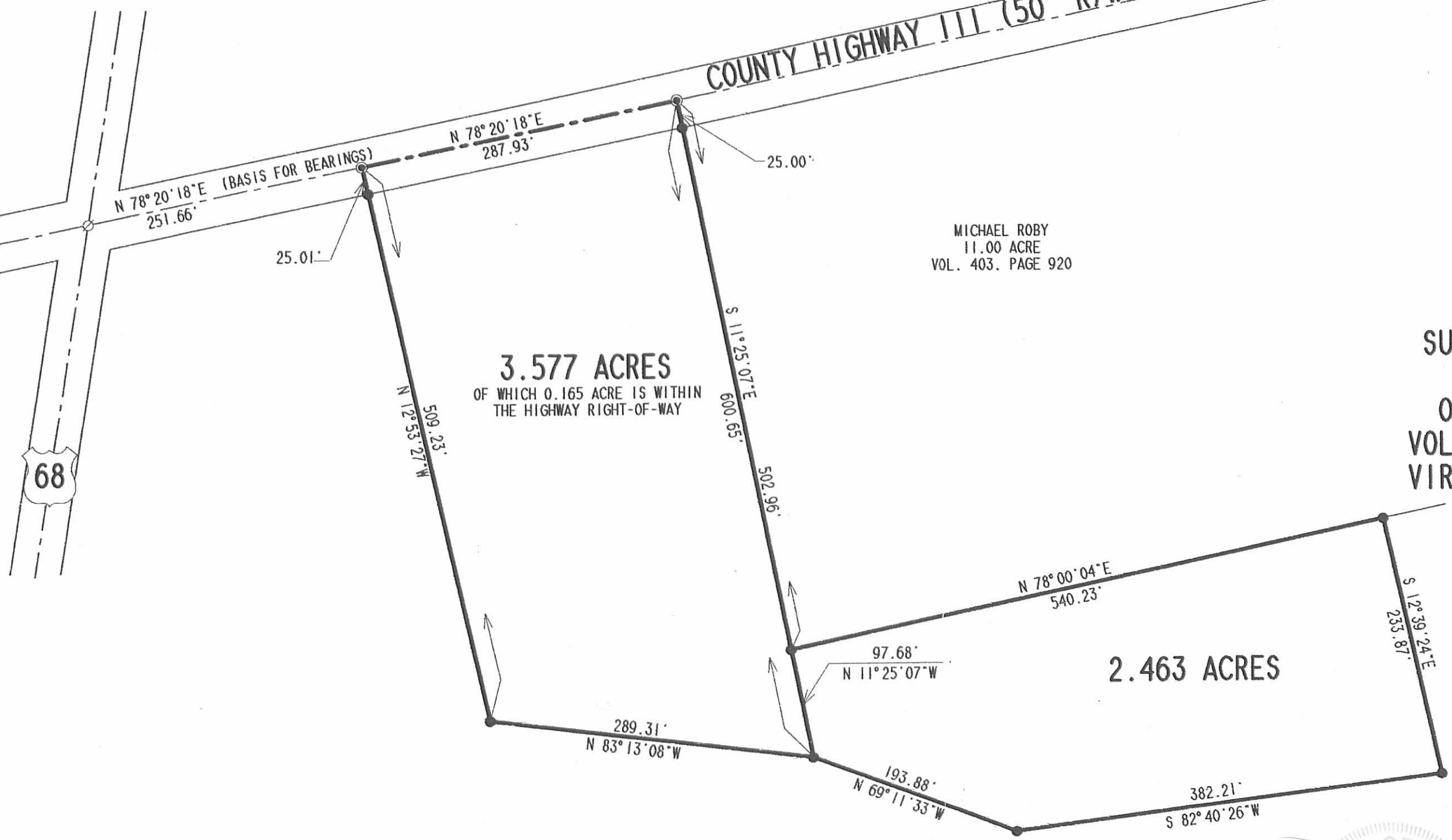
COUNTY HIGHWAY 111 (50' R/W)



LEGEND

- MAG NAIL SET
- 5/8" IRON ROD SET
- MAG NAIL FOUND

SURVEY OF TWO TRACTS OUT OF
THE MARTHA G. MILLER
ORIGINAL 98.19 ACRE TRACT
VOLUME 297, PAGE 278, TRACT I
VIRGINIA MILITARY SURVEY 9933
RUSHCREEK TOWNSHIP
LOGAN COUNTY, OHIO



3.577 ACRES
OF WHICH 0.165 ACRE IS WITHIN
THE HIGHWAY RIGHT-OF-WAY

2.463 ACRES

MICHAEL ROBY
11.00 ACRE
VOL. 403, PAGE 920

MARTHA G. MILLER
ORIG. 98.19 ACRES
VOL. 297, PAGE 278
TRACT I

SURVEYED BY:

Jeffrey I. Lee
JEFFREY I. LEE
PROFESSIONAL SURVEYOR 6359
SEPTEMBER 5, 2000



COPYRIGHT 2000 BY:
LEE SURVEYING & MAPPING CO., INC.
117 North Madriver Street
BELLEFONTAINE, OHIO 43311
(937) 593-7335

INDEXED ON MAP
9002 2P

2 WORKING DAYS
BEFORE YOU DIG
CALL TOLL FREE **800-362-2764**
OHIO UTILITIES PROTECTION SERVICE.

D 388

MMILLER2
MMILLER.DAT

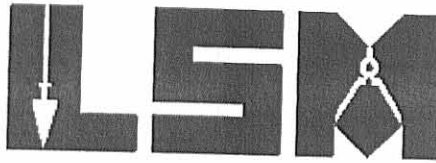
L-3019-3

REC'D 7-5-07 SAM OK

Lee Surveying and Mapping Co., Inc.

Land Surveys • Topography • Subdivisions • Construction Layout

117 N. Madriver St.
Bellefontaine OH 43311



Phone: (937) 593-7335
Fax: (937) 593-7444

MILLER 245.532 ACRES

Lying in Virginia Military Survey 9933, Rushcreek Township, Logan County, Ohio.

Being all the Martha G. Miller Trust; Martha G. Miller, Trustee, 94.47 acre tract as deeded and described in Official Record 683, Page 799, Tract I and all of the remainder of the original 98.19 acre tract, all of the 47.555 acre tract, all of the 0.625 acre tract and all of the remainder of the original 20 acre tract as deeded and described in Official Record 683, Page 801, Tracts I, II, III and IV of the Logan County Records of Deeds and being more particularly described as follows:

Beginning at a MAG nail found on the north line of Virginia Military Survey 9933 at the intersection of the center-lines of U.S. Route 68 and County Highway 111.

THENCE, with the north line of Virginia Military Survey 9933 and the center-line of County Highway 111 (50 feet wide), N 82°35'-52"E, a distance of 251.66 feet to a MAG nail found.

THENCE, with the lines of the Blayne E. Roby 3.577 acre tract (O.R. 481, Pg. 63), the following two courses:

S 8°37'-59"E, a distance of 509.23 feet to a 5/8 inch iron rod found, passing a 5/8 inch iron rod found at 25.01 feet.

S 78°57'-36"E, a distance of 289.31 feet to a 5/8 inch iron rod found.

THENCE, with the lines of the Michael Roby 2.463 acre tract (O.R. 479, Pg. 268), the following three courses:

S 64°56'-08"E, a distance of 193.88 feet to a 5/8 inch iron rod found.

N 86°55'-58"E, a distance of 382.21 feet to a 5/8 inch iron rod found.

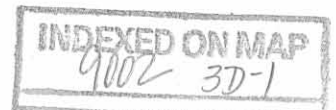
N 8°23'-52"W, a distance of 233.87 feet to a 5/8 inch iron rod found.

THENCE, with the south line of the Michael Roby 11.00 acre tract (Vol. 403, Pg. 920), N 82°15'-35"E, a distance of 503.87 feet to a 5/8 inch iron rod found.

THENCE, with the lines of the Michael L. Sutherly 30 acre tract (O.R. 564, Pg. 733), the following three courses:

S 7°10'-06"E, a distance of 1179.73 feet to a 5/8 inch iron rod found.

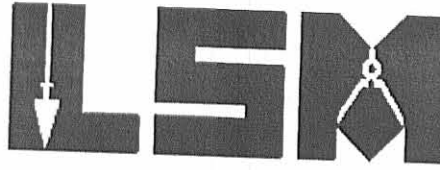
N 83°-12'-55"E, a distance of 759.04 feet to a 5/8 inch iron rod set.



Lee Surveying and Mapping Co., Inc.

Land Surveys • Topography • Subdivisions • Construction Layout

117 N. Madriver St.
Bellefontaine OH 43311



Phone: (937) 593-7335
Fax: (937) 593-7444

N 6°55'-15"W, a distance of 1692.82 feet to a railroad spike set on the north line of Virginia Military Survey 9933 and the center-line of County Highway 111, passing a 5/8 inch iron rod found at 1664.82 feet.

THENCE, with the north line of Virginia Military Survey 9933 and the center-line of County Highway 111, the following two courses:

N 82°-14'-30"E, a distance of 596.67 feet to a MAG spike set over a stone found at center-line Station 96+02.48(Logan County Engineer's Field Book 707, Page 8).

N 83°-10'-55"E, a distance of 397.30 feet to a railroad spike found.

THENCE, with the west lines of the Joseph E. Miller 1.986 acre tract (O.R. 732, Pg. 53) and the Lugene F. Smith 24.841 acre tract (O.R. 296, Pg. 811), S 8°-02'-13"E, a distance of 1286.49 feet to a 5/8 inch iron rod found, passing a 5/8 inch iron rod found at 25.00 feet.

THENCE, with the south line of the said 24.841 acre tract, N 83°-12'-35"E, a distance of 248.25 feet to a 5/8 inch iron rod set.

THENCE, with the west line of the David E. Stephens 51.68 acre tract (O.R. 675, Pg. 640), S 7°-25'-24"E, a distance of 2496.69 feet to a 1/2 inch iron rod found on the center-line of County Highway 113, passing a 5/8 inch iron rod set at 2465.03 feet.

THENCE, with the center-line of County Highway 113 (60 feet wide), the following three courses:

N 78°-46'-02"W, a distance of 1356.63 feet to a 3/4 inch iron pipe found.

S 83°-23'-04"W, a distance of 1272.42 feet to a railroad spike found.

S 82°-56'-23"W, a distance of 353.45 feet to a railroad spike found.

THENCE, with the lines of the Don K. Miller 1.792 acre tract (O.R. 254, Pg. 141), the following three courses:

N 9°-28'-26"W, a distance of 459.76 feet to a 5/8 inch iron rod found, passing a 5/8 inch iron rod found at 30.03 feet.

S 83°-59'-42"W, a distance of 169.52 feet to a 5/8 inch iron rod found.

S 9°-28'-26"E, a distance of 462.89 feet to a railroad spike found on the center-line of County Highway 113, passing a 5/8 inch iron rod found at 432.86 feet.

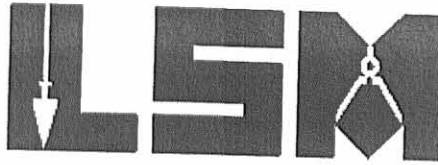
THENCE, with the center-line of County Highway 113, the following two courses:

INDEXED ON MAP
9002 3D-2

Lee Surveying and Mapping Co., Inc.

Land Surveys • Topography • Subdivisions • Construction Layout

117 N. Madriver St.
Bellefontaine OH 43311



Phone: (937) 593-7335
Fax: (937) 593-7444

S 82°56'-23"W, a distance of 799.90 feet to a railroad spike found.

S 82°50'-09"W, a distance of 9.08 feet to a railroad spike set.

THENCE, within the boundary of the Donald Richard Selhorst and Doris Ann Selhorst, Trustees, 27.029 acre tract, N 7°26'-18"W, a distance of 1026.06 feet to a 5/8 inch iron rod set, passing a 5/8 inch iron rod set at 30.00 feet.

THENCE, within the boundary of the Troy A. Selhorst and Lisa J. Selhorst 16.205 acre tract (O.R. 700, Pg. 642, Tract I), N 7°26'-18"W, a distance of 625.18 feet to a 5/8 inch iron rod set.

THENCE, with the north line of the said 16.205 acre tract and the south line of the Philip Burkholder 7.039 acre tract (O.R. 696, Pg. 409), N 83°29'-01"E, a distance of 9.08 feet to a 5/8 inch iron rod found.

THENCE, with the east lines of the said 7.039 acre tract, the Gilbert Miller and Etta Ferne Miller, as Trustee, 1.00 acre tract (O.R. 780, Pg. 411) and the Luke H. Swantz 1 acre tract and 1 acre tract (O.R. 877, Pg. 105, Tracts II and I), N 7°26'-18"W, a distance of 1147.26 feet to a railroad spike set on the center-line of U.S. Route 68, passing a 5/8 inch iron rod set at 1084.45 feet.

THENCE, with the center-line of U.S. Route 68 (70 feet wide), the following two courses:

With a curve to the left, having a central angle of 8°39'-27", a radius of 2868.43 feet, an arc length of 433.43, a chord bearing N 21°34'-46"E, a distance of 433.01 feet to a MAG nail found.

N 17°14'-51"E, a distance of 156.23 feet to the point of beginning.

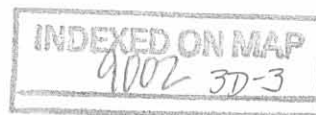
Containing 245.532 acres, of which 3.811 acres are within the highway rights-of-way.

The basis for bearings is the center-line of County Highway 113 west of the east line of Virginia Military Survey 9933, being N 78°46'-02"W, and all other bearings are from angles and distances measured in a field survey by Lee Surveying and Mapping Co., Inc. on June 28, 2007.



Description prepared by:

William K. Bruce
Professional Surveyor 7437
June 29, 2007



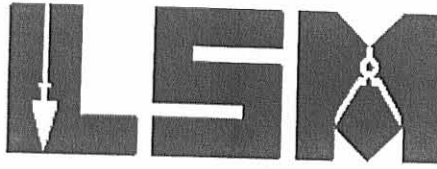
2279067

REV'D 7-5-07 SMYOR

Lee Surveying and Mapping Co., Inc.

Land Surveys • Topography • Subdivisions • Construction Layout

117 N. Madriver St.
Bellefontaine OH 43311



Phone: (937) 593-7335
Fax: (937) 593-7444

MILLER VS SELHORST 0.214 ACRE

Lying in Virginia Military Survey 9933, Rushcreek Township, Logan County, Ohio.

Being part of the Martha G. Miller Trust; Martha G. Miller, Trustee, remainder of the original 98.19 acre tract as deeded and described in Official Record 683, Page 801, Tract I and part of the Donald Richard Selhorst and Doris Ann Selhorst 27.029 acre tract as deeded and described in Official Record 708, Page 739, Tract III of the Logan County Records of Deeds and being more particularly described as follows:

Commencing at a MAG nail found on the intersection of the center-lines of U.S. Route 68 and County Highway 113.

THENCE, with the center-line of County Highway 113 (60 feet wide), N 82°50'-09"E, a distance of 2188.00 feet to a railroad spike set at the TRUE POINT OF BEGINNING.

THENCE, with the west line of the Martha G. Miller Trust; Martha G. Miller, Trustee, remainder of the original 98.19 acre tract, N 7°26'-18"W, a distance of 1026.06 feet to a 5/8 inch iron rod set, passing a 5/8 inch iron rod set at 30.00 feet.

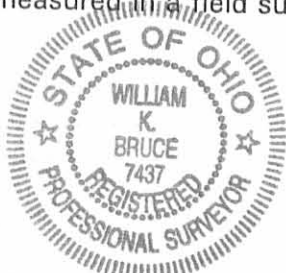
THENCE, with the north line of the Donald Richard Selhorst and Doris Ann Selhorst 27.029 acre tract and the south line of the Troy A. Selhorst and Lisa J. Selhorst 16.205 acre tract (O.R. 700, Pg. 642, Tract I), N 82°30'-29"E, a distance of 9.08 feet to a 5/8 inch iron rod found.

THENCE, with the west line of the said 27.029 acre tract, S 7°26'-18"E, a distance of 1026.12 feet to a railroad spike found on the center-line of County Highway 113, passing a 5/8 inch iron rod set at 996.12 feet.

THENCE, with the center-line of County Highway 113, S 82°50'-09"W, a distance of 9.08 feet to the point of beginning.

Containing 0.214 acre, of which 0.006 acre is within the highway right-of-way.

The basis for bearings is the center-line of County Highway 113 west of the east line of Virginia Military Survey 9933, being N 78°46'-02"W, and all other bearings are from angles and distances measured in a field survey by Lee Surveying and Mapping Co., Inc. on June 28, 2007.

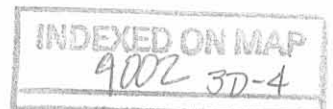


ORIGINAL STAMP IN GREEN

Description prepared by:

A handwritten signature in black ink that reads 'William K. Bruce'.

William K. Bruce
Professional Surveyor 7437
June 29, 2007

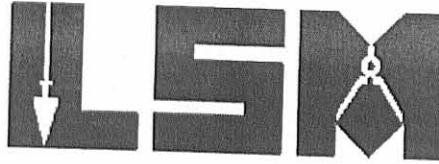


2279067

REC'D 7-5-07 SWM OK
Lee Surveying and Mapping Co., Inc.

Land Surveys • Topography • Subdivisions • Construction Layout

117 N. Madriver St.
Bellefontaine OH 43311



Phone: (937) 593-7335
Fax: (937) 593-7444

**MILLER VS SELHORST
0.131 ACRE**

Lying in Virginia Military Survey 9933, Rushcreek Township, Logan County, Ohio.

Being part of the Martha G. Miller Trust; Martha G. Miller, Trustee, remainder of the original 98.19 acre tract as deeded and described in Official Record 683, Page 801, Tract I and part of the Troy A. Selhorst and Lisa J. Selhorst 16.205 acre tract as deeded and described in Official Record 700, Page 642, Tract I of the Logan County Records of Deeds and being more particularly described as follows:

Commencing at a MAG nail found on the intersection of the center-lines of U.S. Route 68 and County Highway 113.

THENCE, with the center-line of County Highway 113 (60 feet wide), N 82°-50'-09"E, a distance of 2188.00 feet to a railroad spike set.

THENCE, with the west line of the Martha G. Miller Trust; Martha G. Miller, Trustee, remainder of the original 98.19 acre tract, N 7°-26'-18"W, a distance of 1026.06 feet to a 5/8 inch iron rod set at the TRUE POINT OF BEGINNING, passing a 5/8 inch iron rod set at 30.00 feet.

THENCE, with the west line of the said 98.19 acre tract, N 7°-26'-18"W, a distance of 625.18 feet to a 5/8 inch iron rod set.

THENCE, with the north line of the Troy A. Selhorst and Lisa J. Selhorst 16.205 acre tract and the south line of the Philip Burkholder 7.039 acre tract (O.R. 696, Pg. 409), N 83°-29'-01"E, a distance of 9.08 feet to a 5/8 inch iron rod found.

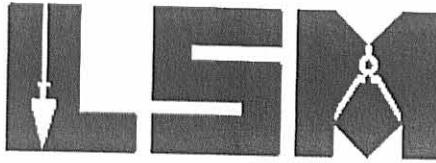
THENCE, with the east line of the said 16.205 acre tract, S 7°-26'-18"E, a distance of 625.02 feet to a 5/8 inch iron rod found.



Lee Surveying and Mapping Co., Inc.

Land Surveys • Topography • Subdivisions • Construction Layout

117 N. Madriver St.
Bellefontaine OH 43311



Phone: (937) 593-7335
Fax: (937) 593-7444

THENCE, with the south line of the 16.205 acre tract and the north line of the Donald Richard Selhorst and Doris Ann Selhorst 27.029 acre tract (O.R. 708, Pg. 739, Tract III), S 82°-30'-29"W, a distance of 9.08 feet to the point of beginning.

Containing 0.131 acre.

The basis for bearings is the center-line of County Highway 113 west of the east line of Virginia Military Survey 9933, being N 78°-46'-02"W, and all other bearings are from angles and distances measured in a field survey by Lee Surveying and Mapping Co., Inc. on June 28, 2007.



ORIGINAL STAMP IN GREEN

Description prepared by:

A handwritten signature in black ink that reads 'William K. Bruce'.

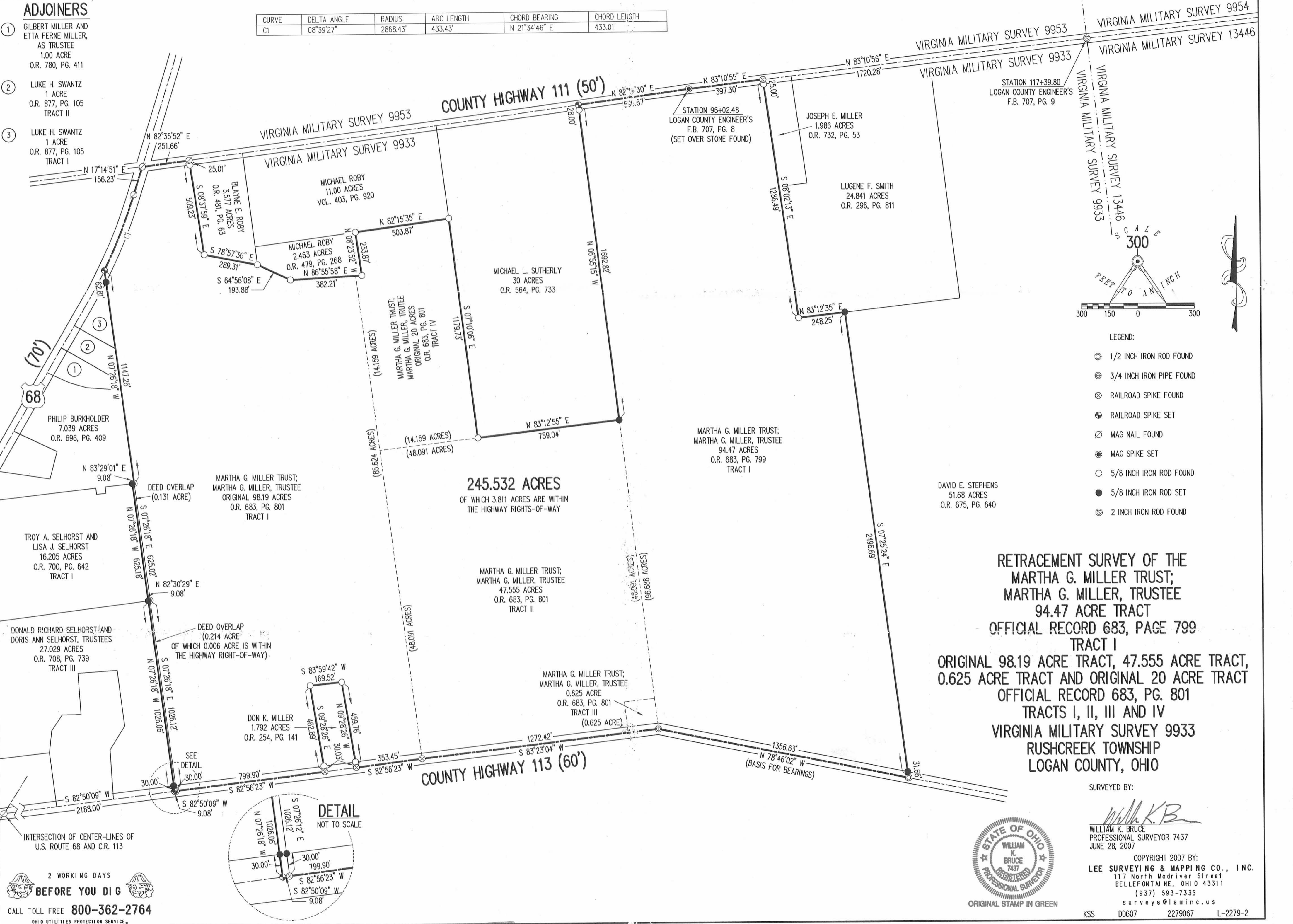
William K. Bruce
Professional Surveyor 7437
June 29, 2007

2279067

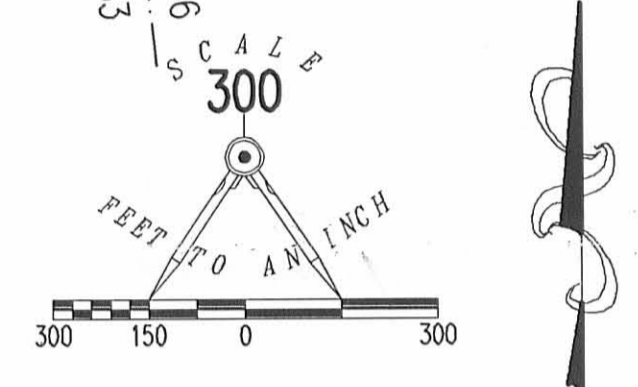


REID 7-5-07 SWM OK

CURVE	DELTA ANGLE	RADIUS	ARC LENGTH	CHORD BEARING	CHORD LENGTH
C1	08°39'27"	2868.43'	433.43'	N 21°34'46" E	433.01'



- ADJOINERS**
- GILBERT MILLER AND ETTA FERNE MILLER, AS TRUSTEE
1.00 ACRE
O.R. 780, PG. 411
 - LUKE H. SWANTZ
1 ACRE
O.R. 877, PG. 105 TRACT II
 - LUKE H. SWANTZ
1 ACRE
O.R. 877, PG. 105 TRACT I



- LEGEND:**
- ⊙ 1/2 INCH IRON ROD FOUND
 - ⊕ 3/4 INCH IRON PIPE FOUND
 - ⊗ RAILROAD SPIKE FOUND
 - ⊙ RAILROAD SPIKE SET
 - ⊗ MAG NAIL FOUND
 - ⊙ MAG SPIKE SET
 - 5/8 INCH IRON ROD FOUND
 - 5/8 INCH IRON ROD SET
 - ⊙ 2 INCH IRON ROD FOUND

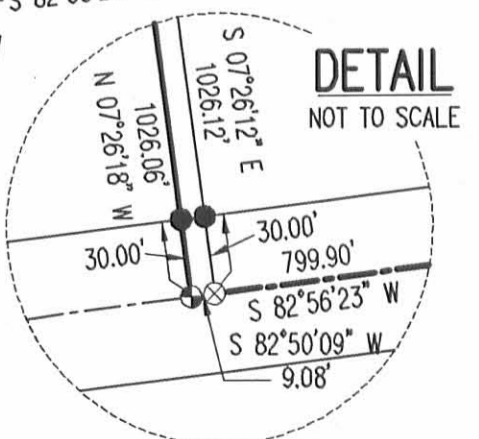
**RETRACEMENT SURVEY OF THE
MARTHA G. MILLER TRUST;
MARTHA G. MILLER, TRUSTEE
94.47 ACRE TRACT
OFFICIAL RECORD 683, PAGE 799
TRACT I
ORIGINAL 98.19 ACRE TRACT, 47.555 ACRE TRACT,
0.625 ACRE TRACT AND ORIGINAL 20 ACRE TRACT
OFFICIAL RECORD 683, PG. 801
TRACTS I, II, III AND IV
VIRGINIA MILITARY SURVEY 9933
RUSHCREEK TOWNSHIP
LOGAN COUNTY, OHIO**

SURVEYED BY:
William K. Bruce
WILLIAM K. BRUCE
PROFESSIONAL SURVEYOR 7437
JUNE 28, 2007



COPYRIGHT 2007 BY:
LEE SURVEYING & MAPPING CO., INC.
117 North Madriver Street
BELLEFONTAINE, OHIO 43311
(937) 593-7335
surveys@lsminc.us
KSS D0607 2279067 L-2279-2

2 WORKING DAYS
BEFORE YOU DIG
CALL TOLL FREE **800-362-2764**
OHIO UTILITIES PROTECTION SERVICE



INDEXED ON MAP
9002-3P

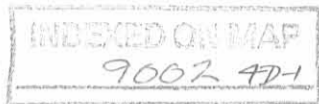
Lee Surveying and Mapping Co., Inc.

Land Surveys • Topography • Subdivisions • Construction Layout

117 N. Madriver St.
Bellefontaine OH 43311



Phone: (937) 593-7335
Fax: (937) 593-7444
surveys@lsminc.us



MILLER TRUST TRACT A 61.383 ACRES

Lying in Virginia Military Survey 9933, Rushcreek Township, Logan County, Ohio.

Being out of the Martha G. Miller Trust; Martha G. Miller, Trustee original 98.19 acre tract as deeded and described in Official Record 683, Page 801, Tract I of the Logan County Records of Deeds and being more particularly described as follows:

Beginning on a MAG nail found on the north line of Virginia Military Survey 9933 on the intersection of the center-lines of U.S. Route 68 and County Highway 111.

THENCE, with the north line of Virginia Military Survey 9933 and the center-line of County Highway 111 (50 feet wide), N 82°-35'-52"E, a distance of 251.66 feet to a MAG nail found.

THENCE, with the lines of the Blayne E. Roby 3.577 acre tract (O.R. 481, Pg. 63), the following two courses:

S 08°-37'-59"E, a distance of 509.23 feet to a 5/8 inch iron rod found, passing a 5/8 inch iron rod found at 25.01 feet.

S 78°-57'-36"E, a distance of 289.31 feet to a 5/8 inch iron rod found.

THENCE, with the southerly line of the Michael Roby 2.463 acre tract (O.R. 479, Pg. 268), S 64°-56'-08"E, a distance of 107.64 feet to a 5/8 inch iron rod set.

THENCE, S 07°-26'-18"E, a distance of 2205.85 feet to a 5/8 inch iron rod set.

THENCE, with the lines of the Don K. Miller 1.792 acre tract (O.R. 254, Pg. 141), the following two courses:

S 83°-59'-42"W, a distance of 119.35 feet to a 5/8 inch iron rod found.

S 09°-28'-26"E, a distance of 462.89 feet to a railroad spike found on the center-line of County Highway 113, passing a 5/8 inch iron rod found at 432.86 feet.

THENCE, with the center-line of County Highway 113 (60 feet wide), the following two courses:

S 82°-56'-23"W, a distance of 799.90 feet to a railroad spike found.

S 82°-50'-09"W, a distance of 9.08 feet to a railroad spike found.

THENCE, within the boundary of the Donald Richard Selhorst and Doris Ann Selhorst, Trustees, 27.029 acre tract (O.R. 708, Pg. 739, Tract III), N 07°-26'-18"W, a distance of 1026.06 feet to a 5/8 inch iron rod found, passing a 5/8 inch iron rod found at 30.00 feet.

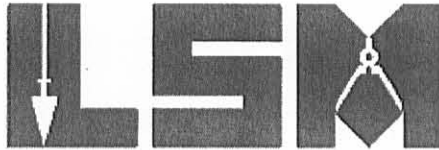
THENCE, within the boundary of the Troy A. Selhorst and Lisa J. Selhorst 16.205 acre tract (O.R. 700, Pg. 642, Tract I), N 07°-26'-18"W, a distance of 625.18 feet to a 5/8 inch iron rod found.

THENCE, with the north line of the said 16.205 acre tract and the south line of the Philip Burkholder 7.039 acre tract (O.R. 696, Page 409), N 83°-29'-01"E, a distance of 9.08 feet to a 5/8 inch iron rod found.

Lee Surveying and Mapping Co., Inc.

Land Surveys • Topography • Subdivisions • Construction Layout

117 N. Madriver St.
Bellefontaine OH 43311



Phone: (937) 593-7335
Fax: (937) 593-7444
surveys@lsminc.us

THENCE, with the east lines of the said 7.039 acre tract, the Luke H. Swantz, 1.00 acre tract (O.R. 907, Pg. 522) and the Luke H. Swantz 1 acre tract and 1 acre tract (O.R. 877, Pg. 105, Tract II and Tract I), N 07°-26'-18"W, a distance of 1147.26 feet to a railroad spike found on the center-line of U.S. Route 68, passing a 5/8 inch iron rod found at 1084.45 feet.

THENCE, with the center-line of U.S. Route 68 (80 feet wide), the following two courses:

With a curve to the left, having a central angle of 08°-39'-27", a radius of 2868.43 feet, an arc length of 433.43 feet, a chord bearing N 21°-34'-46"E, a distance of 433.01 feet to a MAG nail found.

N 17°-14'-51"E, a distance of 156.23 feet to the point of beginning.

Containing 61.383 acres, of which 1.186 acres are within the highway rights-of-way.

Property is subject to any and all previous easements and rights-of-way of record.

The basis for bearings is the center-line of County Highway 113 west of the east line of Virginia Military Survey 9933, being N 78°-46'-02"W, and all other bearings are from angles and distances measured in a field survey by Lee Surveying and Mapping Co., Inc. on November 2, 2010.

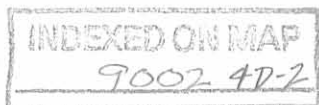
Description prepared by:



ORIGINAL STAMP IN GREEN

William K. Bruce
Professional Surveyor 7437
November 8, 2010

22791010



REC'D 11-10-10 SMM ON

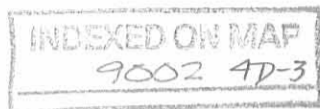
Lee Surveying and Mapping Co., Inc.

Land Surveys • Topography • Subdivisions • Construction Layout

117 N. Madriver St.
Bellefontaine OH 43311



Phone: (937) 593-7335
Fax: (937) 593-7444
surveys@lsminc.us



MILLER TRUST TRACT B 61.383 ACRES

Lying in Virginia Military Survey 9933, Rushcreek Township, Logan County, Ohio.

Being out of the Martha G. Miller Trust; Martha G. Miller, Trustee original 98.19 acre tract and 47.555 acre tract and all of the original remainder of the 20 acre tract as deeded and described in Official Record 683, Page 801, Tract I, Tract II and Tract IV of the Logan County Records of Deeds and being more particularly described as follows:

Commencing on a MAG nail found on the north line of Virginia Military Survey 9933 on the intersection of the center-lines of U.S. Route 68 and County Highway 111.

THENCE, with the north line of Virginia Military Survey 9933 and the center-line of County Highway 111 (50 feet wide), N 82°-35'-52"E, a distance of 251.66 feet to a MAG nail found.

THENCE, with the lines of the Blayne E. Roby 3.577 acre tract (O.R. 481, Pg. 63), the following two courses:

S 08°-37'-59"E, a distance of 509.23 feet to a 5/8 inch iron rod found, passing a 5/8 inch iron rod found at 25.01 feet.

S 78°-57'-36"E, a distance of 289.31 feet to a 5/8 inch iron rod found.

THENCE, with the southerly line of the Michael Roby 2.463 acre tract (O.R. 479, Pg. 268), S 64°-56'-08"E, a distance of 107.64 feet to a 5/8 inch iron rod set at the TRUE POINT OF BEGINNING.

THENCE, with the lines of the said 2.463 acre tract, the following three courses:

S 64°-56'-08"E, a distance of 86.24 feet to a 5/8 inch iron rod found.

N 86°-55'-58"E, a distance of 382.21 feet to a 5/8 inch iron rod found.

N 08°-23'-52"W, a distance of 233.87 feet to a 5/8 inch iron rod found.

THENCE, with the south line of the Michael Roby 11.00 acre tract (Vol. 403, Pg. 920), N 82°-15'-35"E, a distance of 503.87 feet to a 5/8 inch iron rod found.

THENCE, with the lines of the Michael L. Sutherly 30 acre tract (O.R. 564, Pg. 733), the following two courses:

S 07°-10'-06"E, a distance of 1179.73 feet to a 5/8 inch iron rod found.

N 83°-12'-55"E, a distance of 70.70 feet to a 5/8 inch iron rod set.

THENCE, S 07°-10'-06"E, a distance of 1657.92 feet to a 5/8 inch iron rod set on the center-line of County Highway 113, passing a 5/8 inch iron rod set at 1627.92 feet.

THENCE, with the center-line of County Highway 113 (60 feet wide), the following two courses:

S 83°-23'-04"W, a distance of 591.24 feet to a railroad spike found.

Lee Surveying and Mapping Co., Inc.

Land Surveys • Topography • Subdivisions • Construction Layout

117 N. Madriver St.
Bellefontaine OH 43311



Phone: (937) 593-7335
Fax: (937) 593-7444
surveys@lsminc.us

S 82°-56'-23"W, a distance of 353.45 feet to a railroad spike found.

THENCE, with the lines of the Don K. Miller 1.792 acre tract (O.R. 254, Pg. 141), the following two courses:

N 09°-28'-26"W, a distance of 459.76 feet to a 5/8 inch iron rod found, passing a 5/8 inch iron rod found at 30.03 feet.

S 83°-59'-42"W, a distance of 50.17 feet to a 5/8 inch iron rod set.

THENCE, N 07°-26'-18"W, a distance of 2205.85 feet to the point of beginning.

Containing 61.383 acres, of which 0.651 acre is within the highway right-of-way.

Property is subject to any and all previous easements and rights-of-way of record.

The basis for bearings is the center-line of County Highway 113 west of the east line of Virginia Military Survey 9933, being N 78°-46'-02"W, and all other bearings are from angles and distances measured in a field survey by Lee Surveying and Mapping Co., Inc. on November 2, 2010.



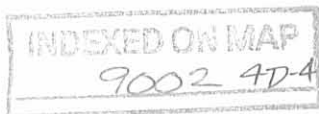
ORIGINAL STAMP IN GREEN

Description prepared by:

A handwritten signature in cursive script that reads 'William K. Bruce'.

William K. Bruce
Professional Surveyor 7437
November 8, 2010

22791010

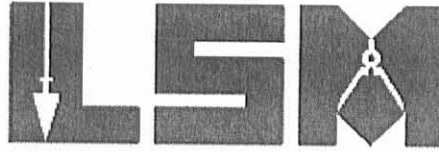


REC'D 11-10-10 SMJ/OK

Lee Surveying and Mapping Co., Inc.

Land Surveys • Topography • Subdivisions • Construction Layout

117 N. Madriver St.
Bellefontaine OH 43311



Phone: (937) 593-7335
Fax: (937) 593-7444
surveys@lsminc.us



MILLER TRUST 56.697 ACRES

Lying in Virginia Military Survey 9933, Rushcreek Township, Logan County, Ohio.

Being out of the Martha G. Miller Trust; Martha G. Miller, Trustee 47.555 acre tract and all of the 0.625 acre tract as deeded and described in Official Record 683, Page 801, Tract II and Tract III and part of the 94.47 acre tract as deeded and described in Official Record 683, Pg. 799, Tract I of the Logan County Records of Deeds and being more particularly described as follows:

Commencing on a MAG nail found on the north line of Virginia Military Survey 9933 on the intersection of the center-lines of U.S. Route 68 and County Highway 111.

THENCE, with the north line of Virginia Military Survey 9933 and the center-line of County Highway 111 (50 feet wide), the following two courses:

N 82°-35'-52"E, a distance of 1053.91 feet to a 1 inch iron rod found at Station 77+09.48 (Logan County Engineer's Field Book 707, Page 7), passing a MAG nail found at 251.66 feet.

N 82°-14'-30"E, a distance of 1296.06 feet to a railroad spike found.

THENCE, with the east line of the Michael L. Sutherly 30 acre tract (O.R. 564, Pg. 733), S 06°-55'-15"E, a distance of 1692.82 feet to a 5/8 inch iron rod found at the TRUE POINT OF BEGINNING, passing a 5/8 inch iron rod found at 28.00 feet.

THENCE, S 06°-55'-15"E, a distance of 750.00 feet to a 5/8 inch iron rod set.

THENCE, S 89°-40'-40"E, a distance of 1289.13 feet to a 5/8 inch iron rod set.

THENCE, with the west line of the David E. Stephens 51.68 acre tract (O.R. 675, Pg. 640), S 07°-25'-24"E, a distance of 1170.09 feet to a 1/2 inch iron rod found on the center-line of County Highway 113, passing a 5/8 inch iron rod found at 1138.43 feet.

THENCE, with the center-line of County Highway 113 (60 feet wide), the following two courses:

N 78°-46'-02"W, a distance of 1356.63 feet to a 3/4 inch iron pipe found.

S 83°-23'-04"W, a distance of 681.18 feet to a 5/8 inch iron rod set,

THENCE, N 07°-10'-06"W, a distance of 1657.92 feet to a 5/8 inch iron rod set, Passing a 5/8 inch iron rod set at 30.00 feet.

Lee Surveying and Mapping Co., Inc.

Land Surveys • Topography • Subdivisions • Construction Layout

117 N. Madriver St.
Bellefontaine OH 43311



Phone: (937) 593-7335
Fax: (937) 593-7444
surveys@lsminc.us

THENCE, with the south line of the aforesaid 30 acre tract,
N 83°-12'-55"E, a distance of 688.34 feet to the point of beginning.

Containing 56.697 acres, of which 1.403 acres are within the highway right-of-way.

Property is subject to any and all previous easements and rights-of-way of record.

The basis for bearings is the center-line of County Highway 113 west of the east line of Virginia Military Survey 9933, being N 78°-46'-02"W, and all other bearings are from angles and distances measured in a field survey by Lee Surveying and Mapping Co., Inc. on November 2, 2010.

Description prepared by:

William K. Bruce

William K. Bruce
Professional Surveyor 7437
November 8, 2010

22791010



ORIGINAL STAMP IN GREEN

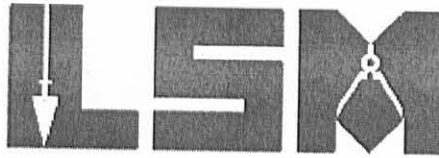


REC'D 11-10-10 SMY ak

Lee Surveying and Mapping Co., Inc.

Land Surveys • Topography • Subdivisions • Construction Layout

117 N. Madriver St.
Bellefontaine OH 43311



Phone: (937) 593-7335
Fax: (937) 593-7444
surveys@lsminc.us

MILLER TRUST 66.069 ACRES

Lying in Virginia Military Survey 9933, Rushcreek Township, Logan County, Ohio.

Being out of the Martha G. Miller Trust; Martha G. Miller, Trustee 94.47 acre tract as deeded and described in Official Record 683, Pg. 799, Tract I of the Logan County Records of Deeds and being more particularly described as follows:

Commencing on a MAG nail found on the north line of Virginia Military Survey 9933 on the intersection of the center-lines of U.S. Route 68 and County Highway 111.

THENCE, with the north line of Virginia Military Survey 9933 and the center-line of County Highway 111 (50 feet wide), the following two courses:

N 82°-35'-52"E, a distance of 1053.91 feet to a 1 inch iron rod found at Station 77+09.48 (Logan County Engineer's Field Book 707, Page 7), passing a MAG nail found at 251.66 feet.

N 82°-14'-30"E, a distance of 1296.06 feet to a railroad spike found at the TRUE POINT OF BEGINNING.

THENCE, with the with the north line of Virginia Military Survey 9933 and the center-line of County Highway 111, the following two courses:

N 82°-14'-30"E, a distance of 596.67 feet to a MAG nail found (over a stone) at Station 96+02.48 (Logan County Engineer's Field Book 707, Pg. 8).

N 83°-10'-55"E, a distance of 397.30 feet to a railroad spike found.

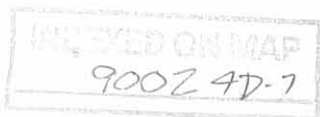
THENCE, with the west lines of the Joseph E. Miller 1.986 acre tract (O.R. 732, Pg. 53) and the Galen Miller 22.855 acre tract (O.R. 992, Pg. 921), S 08°-02'-13"E, a distance of 1286.49 feet to a 5/8 inch iron rod found, passing a 5/8 inch iron rod found at 25.00 feet.

THENCE, with the south line of the said 22.855 acre tract, N 83°-12'-35"E, a distance of 248.25 feet to a 5/8 inch iron rod found.

THENCE, with the west line of the David E. Stephens 51.68 acre tract (O.R. 675, Pg. 640), S 07°-25'-24"E, a distance of 1326.60 feet to a 5/8 inch iron rod set.

THENCE, N 89°-40'-40"W, a distance of 1289.13 feet to a 5/8 inch iron rod set.

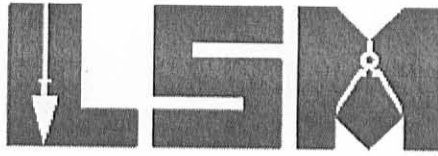
THENCE, with the east line of the Martha G. Miller Trust; Martha G. Miller, Trustee, 47.555 acre tract (O.R. 683, Pg. 801, Tract II), N 06°-55'-15"W, a distance of 750.00 feet to a 5/8 inch iron rod found.



Lee Surveying and Mapping Co., Inc.

Land Surveys • Topography • Subdivisions • Construction Layout

117 N. Madriver St.
Bellefontaine OH 43311



Phone: (937) 593-7335
Fax: (937) 593-7444
surveys@lsminc.us

THENCE, with the east line of the Michael L. Sutherly 30 acre tract (O.R. 564, Pg. 733), N 06°-55'-15"W, a distance of 1692.82 feet to the point of beginning, passing a 5/8 inch iron rod found at 1664.82 feet

Containing 66.069 acres, of which 0.571 acre is within the highway right-of-way.

Property is subject to any and all previous easements and rights-of-way of record.

The basis for bearings is the center-line of County Highway 113 west of the east line of Virginia Military Survey 9933, being N 78°-46'-02"W, and all other bearings are from angles and distances measured in a field survey by Lee Surveying and Mapping Co., Inc. on November 2, 2010.

Description prepared by:



ORIGINAL STAMP IN GREEN

A handwritten signature in black ink that reads 'William K. Bruce'.

William K. Bruce
Professional Surveyor 7437
November 8, 2010

22791010

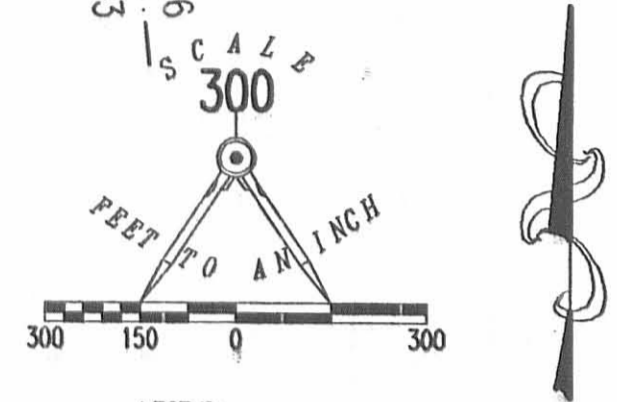
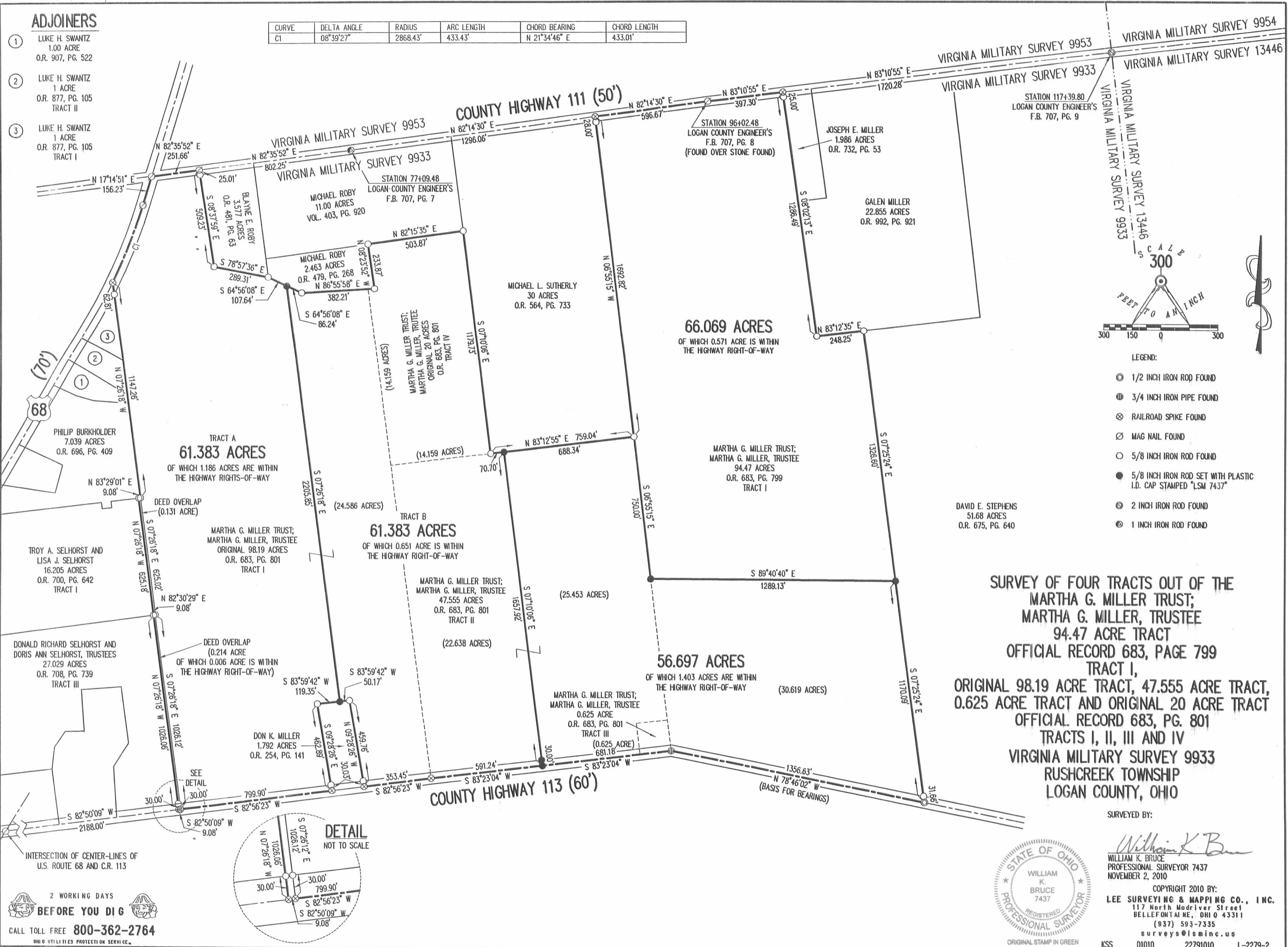


REV'D 11-10-10 SWM/OK

ADJOINERS

- ① LUKE H. SWANTZ
1.00 ACRE
O.R. 907, PG. 522
- ② LUKE H. SWANTZ
1 ACRE
O.R. 877, PG. 105
TRACT II
- ③ LUKE H. SWANTZ
1 ACRE
O.R. 877, PG. 105
TRACT I

CURVE	DELTA ANGLE	RADIUS	ARC LENGTH	CHORD BEARING	CHORD LENGTH
C1	08°39'27"	2868.43'	433.43'	N 21°34'46" E	433.01'



- LEGEND:**
- ⊙ 1/2 INCH IRON ROD FOUND
 - ⊕ 3/4 INCH IRON PIPE FOUND
 - ⊗ RAILROAD SPIKE FOUND
 - ⊘ MAG NAIL FOUND
 - 5/8 INCH IRON ROD FOUND
 - 5/8 INCH IRON ROD SET WITH PLASTIC I.D. CAP STAMPED "LSM 7437"
 - ⊙ 2 INCH IRON ROD FOUND
 - ⊙ 1 INCH IRON ROD FOUND

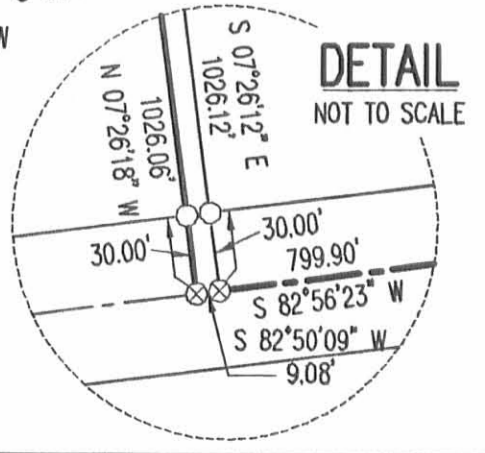
**SURVEY OF FOUR TRACTS OUT OF THE
MARTHA G. MILLER TRUST;
MARTHA G. MILLER, TRUSTEE
94.47 ACRE TRACT
OFFICIAL RECORD 683, PAGE 799
TRACT I,
ORIGINAL 98.19 ACRE TRACT, 47.555 ACRE TRACT,
0.625 ACRE TRACT AND ORIGINAL 20 ACRE TRACT
OFFICIAL RECORD 683, PG. 801
TRACTS I, II, III AND IV
VIRGINIA MILITARY SURVEY 9933
RUSHCREEK TOWNSHIP
LOGAN COUNTY, OHIO**

SURVEYED BY:
William K. Bruce
WILLIAM K. BRUCE
PROFESSIONAL SURVEYOR 7437
NOVEMBER 2, 2010



COPYRIGHT 2010 BY:
LEE SURVEYING & MAPPING CO., INC.
117 North Madriver Street
BELLEFONTAINE, OHIO 43311
(937) 593-7335
surveys@lsmcinc.us

2 WORKING DAYS
BEFORE YOU DIG
CALL TOLL FREE **800-362-2764**
OHIO UTILITIES PROTECTION SERVICE



INDEXED ON MAP
9052-4P

KSS D1010 22791010 L-2279-2