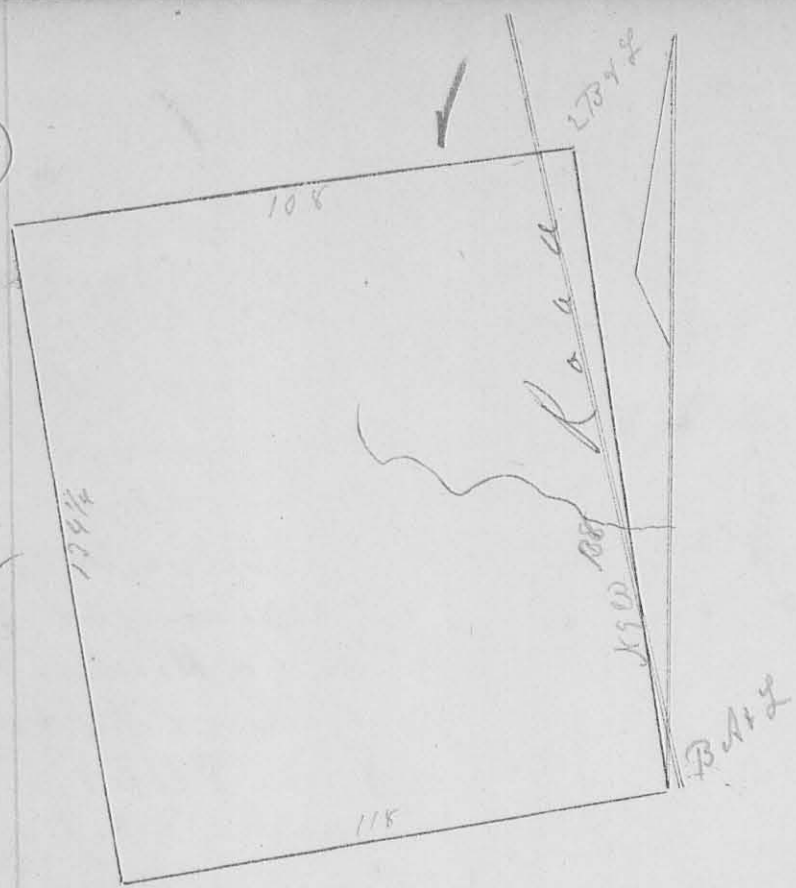


8

8526

Survey  
583



Survey May 15 1827 for the heirs  
 of Solomon Coover the following lot of land  
 being part of Survey no. 3321, Beginings at  
 two Buck and a Lym (Lym game) Run S 9 E  
 74 poles to travel 78 poles to road, 138 poles  
 to a Buck, Ash, & Lym in J Garneys line  
 52 links south of Garneys Corner, (Lym and  
 Ash game) (stump standing) then S 83 1/2 W 118 poles  
 to Stake & Lym, Run N 9 1/5 W 134 1/2 poles to  
 two Ash in J Dickeys line (one ash game) then  
 N 89 1/4 E 108 poles to Ganesfield & Solomonstons  
 road, 116 poles to the Beginning containing  
 99 5/100 Acres  
 A. Harrison  
 C. S. Lee