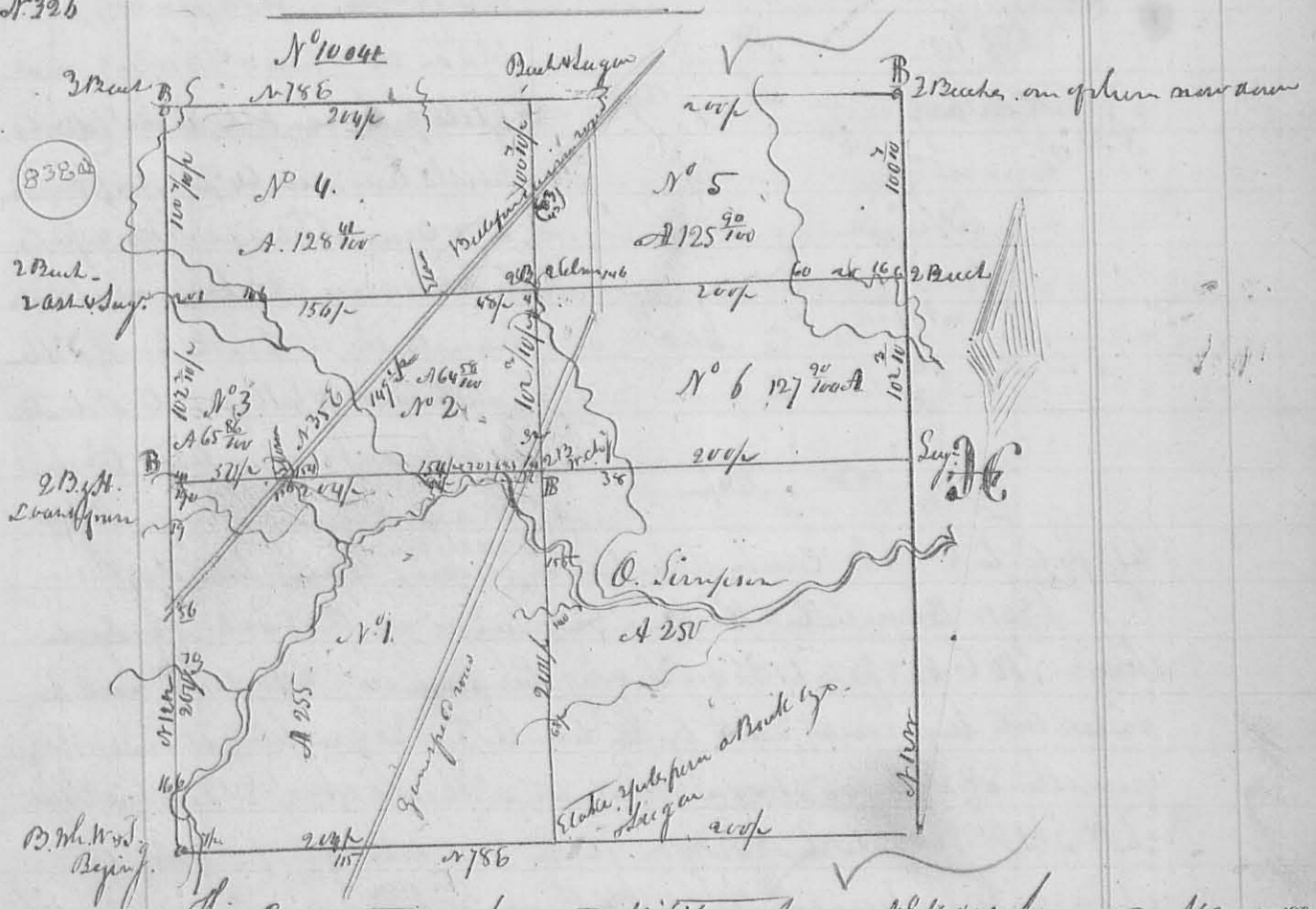


then dividing the same into ten parts as follows. Beginning on the south line of said quarter section, 20 ch. 12 links from either corner, at a White Oak 26 inches diameter 880 E 26 Links, Run 16 in. dr. N 80 W 11 Links - then on N 2 E 41 chain 35 Links to a Post 10 L.P. N 41 1/2 E 6 1/2 links to a post on S.E. C. 156 W 29 Links, in the north line of said Q 20.12 from either corner -

D. Hopkins Co. Surveyor L. C.

N^o 326



This connection represents Military Survey N^o 10041 surveyed May 9, 1836 for Signs starting East lying on the waters of Rush Creek - The course of the lines N 12 W. & at right angles therewith, except the line between Lots N^o 2 & 3, which runs with the Big road from a stone in the road, when the north line of lot N^o 1 crosses N 35 E to a stone, when the north line of N^o 4 crosses the Survey road, the figures with the letter p before them on the lines represent their respective lengths from corner to corner, the others (smaller) show the pole at which the branches were capped in going round the survey. B this letter denotes the beginning of each lot - except N^o 1 which begins in the south West corner of the origin of survey, the course, as noted on the map, and also the contents in acres.

Thos. Jones
John Fay } ch. men
Jacob Geary H. S. K.

D. Hopkins Co. Surveyor L. C.