

REC'D 1-12-98 SMLY OK ✓



# Lee Surveying and Mapping Co., Inc.



Farm Surveys • Lot Surveys • Topography • Subdivisions • Construction Layout

117 NORTH MADRIVER STREET  
BELLEFONTAINE, OHIO 43311

(937) 593-7335  
FAX (937) 593-7444

## EVILSIZOR (126.951 ACRES)

Lying in Virginia Military Survey 3322, Jefferson, Lake and Rushcreek Townships, Logan County, Ohio.

Being that tract of land in the name of Kathryn Evilsizor as deeded and described in Official Record 41, Page 60 of the Logan County Records of Deeds and being more particularly described as follows:

Beginning at a 1 inch iron rod found at the intersection of center-lines of Township Road 219 and County Highway 9.

THENCE, with the south line of Township Road 219 and the south line of Virginia Military Survey 3322, S 84°-52'-55" W, a distance of 679.36 feet to a railroad spike found at the southeast corner of the Raymond F. Kerns 0.935 acre tract (O.R. 130, Pg. 212).

THENCE, with the lines of the said 0.935 acre tract the following three courses:

N 7°-48'-05" W, a distance of 300.00 feet to a 5/8 inch iron rod set.

S 84°-52'-55" W, a distance of 136.00 feet to a 5/8 inch iron rod set.

S 7°-48'-05" E, a distance of 300.00 feet to a railroad spike found on the center-line of Township Road 219.

THENCE, with the center-line of Township Road 219 and the south line of Virginia Military Survey 3322, S 84°-52'-55" W, a distance of 913.58 feet to a railroad spike set.

THENCE, with the east lines of the Bernice Stover 35.73 acre tract (Vol. 203, Pg. 542) and the Logan Land Corporation 147.61 acre tract (O.R. 45, Pg. 539), N 4°-40'-40" W, a distance of 3022.32 feet to a 5/8 inch iron rod found.

THENCE, with a south line of the said 147.61 acre tract, N 85°-10'-09" E, a distance of 1842.78 feet to a 5/8 inch iron rod set (The original stone was found but had been destroyed by construction).

THENCE, with the west lines of the John F. Harmon 37.27 acre tract (Vol. 329, Pg. 833) and the Keith A. Peterson 8.989 acre tract (O.R. 94, Pg. 219), S 4°-55'-03" E, a distance of 2867.75 feet to a railroad spike set on the center-line of County Highway 9.

THENCE, with the center-line of County Highway 9, S 36°-02'-48" W, a distance of 192.96 feet to the point of beginning.

Containing 126.951 acres of which 31.198 acres are in Jefferson Township (0.812 acre is in highway rights-of-way), 56.559 acres are in Lake Township (0.239 acre is in highway right-of-way), and 39.194 acres are in Rushcreek Township.

The basis for bearings is based upon the center-line of Township Road 57 east from the line between V.M.S. 3322 and V.M.S. 3321 being N 84°-43'-00" E, and all other bearings are from angles and distances measured in a field survey completed June 15, 1992, by Lee Surveying and Mapping Company.

Description prepared by:  
Jeffrey I. Lee  
Professional Surveyor 6359  
June 15, 1992  
Revised January 12, 1998

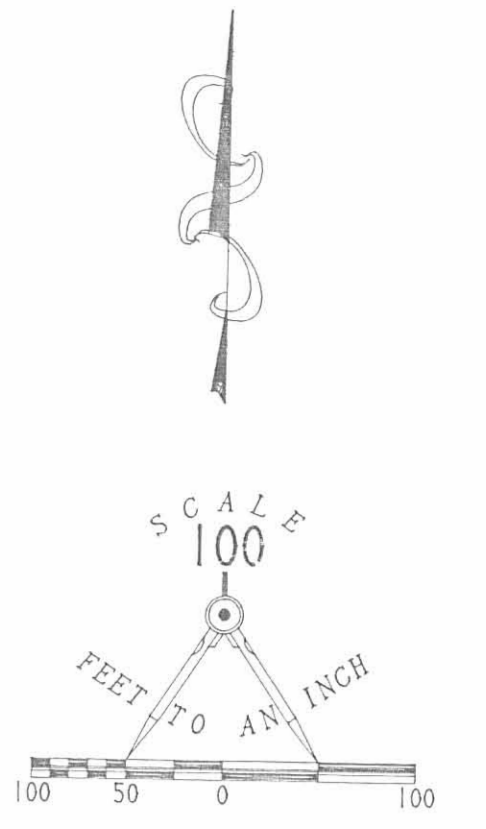


ORIGINAL STAMP IN GREEN

INDEXED ON MAP  
0375 IP

LOGAN LAND CORPORATION  
147.61 AC.  
O.R. 45, PG. 539

N 85° 10' 09" E  
1842.78'



- LEGEND
- ⊕ STONE FOUND DISTURBED
  - ◊ 1/2" I. ROD FOUND
  - 5/8" I. ROD FOUND
  - 1" I. ROD FOUND
  - ⊗ RAILROAD SPIKE FOUND
  - ⊙ RAILROAD SPIKE SET
  - 5/8" I. ROD SET

REFERENCE:  
LOGAN COUNTY ENGINEER'S RECORDS:  
DRAWING X-9C 11/18  
BOOK C, PAGE 59  
FIELD BOOK 552, PAGES 26-27

JOHN F. HARMON  
37.27 AC.  
VOL. 329, PG. 833

KEITH A. PETERSON  
8.989 AC.  
O.R. 94, PG. 219

126.951 ACRES TOTAL

LAKE TOWNSHIP (56.559 ACRES)

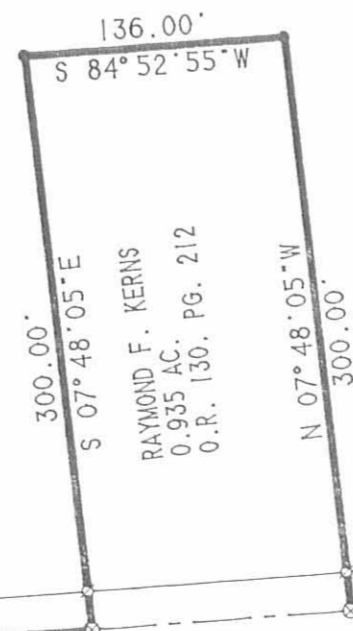
RUSHCREEK TOWNSHIP (39.194 ACRES)

JEFFERSON TOWNSHIP (31.198 ACRES)

NOTE:  
ACREAGE IN LAKE TOWNSHIP IS BASED  
UPON THE LOGAN COUNTY ENGINEER'S  
RECORD BOOK C, PAGE 59 FOR THE  
INTERSECTION WITH TOWNSHIP ROAD 219  
AND THE 1949 FOSTER WRIGHT SURVEY  
FOR ALLES FOR THE TOWNSHIP LINE LOCATION  
AT COUNTY HIGHWAY 57.

NOTE:  
THE LOCATION OF THE LINE BETWEEN RUSHCREEK TOWNSHIP  
AND JEFFERSON TOWNSHIP IS BASED UPON STATIONING ON  
THE CENTER-LINE OF COUNTY HIGHWAY 9 AND A SCALED  
LOCATION FROM THE COUNTY TAX MAP PHOTOS FOR THE POINT  
ON THE LAKE TOWNSHIP LINE.

BERNICE STOVER  
35.73 AC.  
VOL. 203, PG. 542



TOWNSHIP ROAD 219

(0.239 ACRE IN THE HIGHWAY RIGHT-OF-WAY)  
913.58'  
S 84° 52' 55" W

V.M.S. 3322 (0.812 ACRE IN THE HIGHWAY RIGHT-OF-WAY)  
679.36'  
S 84° 52' 55" W

V.M.S. 3442

COUNTY HIGHWAY 9

SURVEY OF THE KATHRYN EVILSIZOR LAND  
126.951 ACRES BY THIS SURVEY  
OFFICIAL RECORD 41, PAGE 60  
VIRGINIA MILITARY SURVEY 3322  
JEFFERSON, LAKE AND RUSHCREEK TOWNSHIPS  
LOGAN COUNTY, OHIO

SURVEYED BY:  
JEFFREY I. LEE  
PROFESSIONAL SURVEYOR 6359  
JUNE 15, 1992  
LEE SURVEYING & MAPPING CO.  
143 East Columbus Avenue  
BELLEFONTAINE, OHIO 43311  
(613) 593-7335

INDEXED ON MAP  
8375 IP

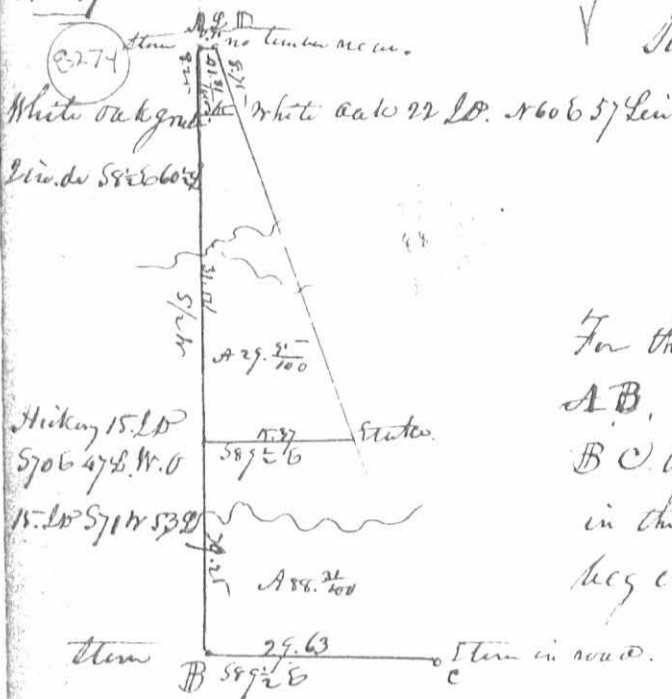
238

March 1826

the interior corner (a letter D) at 606 5/8 links ending in the corner at  
 750, to the original Quarter Section Corner on the South line of the Section -  
 at letter H. For the contents of each lot, see the map, with the common  
 name marked thereon.

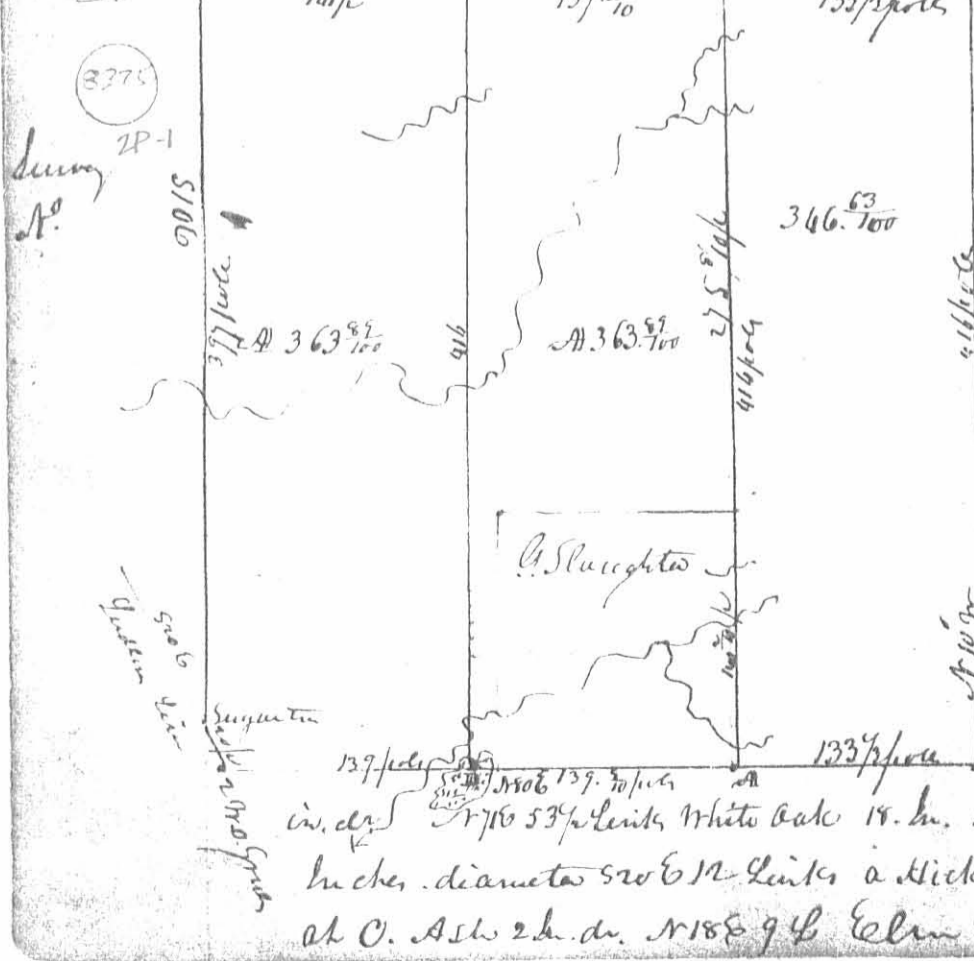
Andrew Gray }  
 Wm. M. Straine } Ch. men Land Hopkins County Surveyor S. C.

A<sup>o</sup> 319



Surveyed March 1826.  
 Note - this plat represents  
 the survey of Tract S 208 S. R. 14 N. R. 20  
 Survey S. and sub. divided for R. Pot  
 terson Agent for J. Gordon - W. B.  
 For the contents of each lot see the plat. The line  
 A B, represent the Western boundary of the sect  
 B C the Southern. C D the eastern a line in  
 in the center of the Millford road At A, the  
 beg in view of the survey, a line the origin  
 lies down. all down as the corner of the Sect.  
 D. Hopkins Co. Surveyor S. C.

A<sup>o</sup> 320



This plat represents a survey  
 made for John Slaughter  
 South of the Prussian treaty  
 line which bound it with  
 North, and D. Lancy's  
 survey N 3322 bound  
 on the East. for the corner  
 & distance of the line in the  
 plat - and also for contents.  
 Description of corner  
 At A, the beg in view of L.  
 Slaughter part of the survey 5800  
 1337 2/3 poles from the S. E. corner  
 the origin of survey, a Sugar 12  
 in. dia. N 716 5/8 links White oak 14 in. dia. N 716 5/8 links at B Ash 10  
 inches diameter 5706 1/2 links a Hickory 3 LD. N 326 16 1/2 links  
 at C. Ash 2 in. dia. N 188 9/8 Elm 5 in. dia. 5596 55 L.

at D. Stand in a spruce. At E. Original Corner, the lot marked 239  
 "G. Staigeter" represents 100 acres, not surveyed, when the subdivision  
 was made, but formerly occupied by said G. Staigeter, and is  
 only marked on the plat to show its situation. The Eastern third  
 contains 346 <sup>62</sup>/<sub>100</sub> acres, laid off agreeably to the original survey  
 132 <sup>1</sup>/<sub>2</sub> poles wide, extending the length of the survey.

Survey of 5. 1826.

Jenniah Laughlin

William Robt. Ch. Com.

L. Hopkins Esq. Surveyor &c.

N<sup>o</sup> 321 Survey of April 20<sup>th</sup> 1826 for John Whelan, Admt. of Philomena Rogers  
 dec. part of Survey N<sup>o</sup> 9975. Beginning at 2 beeches, N. W. corner  
 of said Rogers' lot of land, thence S 12 <sup>1</sup>/<sub>2</sub> E 104 poles, crossing a large  
 branch at 86 poles to 3 sugar, one of them now cut down, thence N 78 E  
 100 poles, crossing a mill race at 38 poles, creek at 52 poles, and  
 mill race at 87 poles to 2 beeches, now cut down, thence N 12 <sup>1</sup>/<sub>2</sub> W  
 104 poles, crossing creek at 32 poles to log on Hickory, 12 cut, thence  
 S 78 W 100 poles to the beginning containing 65 acres, laid off at  
 same time, on this side of the foregoing lot to the Widow of said decedent  
 for decess at follow - Beginning at the N E corner of said Rogers  
 land, described above, at a Hickory, 12 cut, sugar, thence S 78 W  
 33 <sup>3</sup>/<sub>10</sub> poles to an Ironstone and Pine Log, thence S 10 <sup>1</sup>/<sub>2</sub> E 104 poles  
 to a stake in the south line of said lot, thence with said line  
 N 78 E 22 <sup>1</sup>/<sub>2</sub> poles, crossing a mill race to Elm & beeches, the beeches  
 now cut down - thence N 12 W 104 poles, crossing creek at 52 poles to  
 the beginning, containing 21 <sup>6</sup>/<sub>100</sub> acres.

L. P. Anderson 3

Hiram McKim 3 Ch. men

L. Hopkins Esq. Surveyor &c.

N<sup>o</sup> 322 Survey for George Houtz & Mrs. Craig, April 1826 the N W  
 Qr. of S 21. T 2 R 14 W R 1. as follow. Beginning at the quarter  
 Section Corner between S 21 & 22, at a tree in a road, one of the  
 original bearing trees yet standing, thence S 7 <sup>1</sup>/<sub>2</sub> W 40 ch. 60 <sup>1</sup>/<sub>2</sub> crossing  
 a branch at 84 poles to a stone, comes to Hudson, a White 22 in. do S 68 W  
 25 Links, and White Oak 10 L.P. N 81 E 59 Links - thence N 89 <sup>1</sup>/<sub>2</sub> W 40 ch  
 50 Links to a Hickory, 8 in. do N 53 E 22 links, Elm 8 in. do S 25 E 36 <sup>1</sup>/<sub>2</sub>  
 thence N 2 E 30 chain to a stake in a spruce, thence N 88 <sup>3</sup>/<sub>4</sub> E 36 <sup>1</sup>/<sub>2</sub>  
 N E chain to the beginning containing 1161 <sup>34</sup>/<sub>100</sub> acres. Also