

128 to a buckeye and two lymns, thence north 14 poles to a white walnut, thence $\text{N } 35^{\circ} \text{ W } 22$ poles to a white walnut and buck at the junction of two branches; thence $\text{S } 60^{\circ} \text{ W } 14$ poles to a small white walnut, thence up a small branch with its meandering $\text{N } 80^{\circ} \text{ W } 16$ poles to an iron wood; thence $\text{S } 55^{\circ} \text{ W } 12$ poles to a large rock on the east bank of the branch thence $\text{S } 20^{\circ} \text{ W } 34$ poles to a stake; thence $\text{N } 85^{\circ} \text{ W } 33$ 14 poles to a stake; thence $\text{S } 72^{\circ} \text{ W } 18$ poles thence $\text{N } 72^{\circ} \text{ E } 33$ to a stake in the east line of the preceding survey; thence with said line $\text{S } 21^{\circ} \text{ E } 73 \frac{1}{2}$ poles to a sugar tree and elm thence $\text{S } 69^{\circ} \text{ W } 80$ poles to a stone thence $\text{S } 21^{\circ} \text{ E } 4$ poles to the beginning it being part of Thomas Parker's survey no 4497

David Hiatt }
 Jeffrey Marsh } 66
 J. W. Marrison C. S. L. & C.

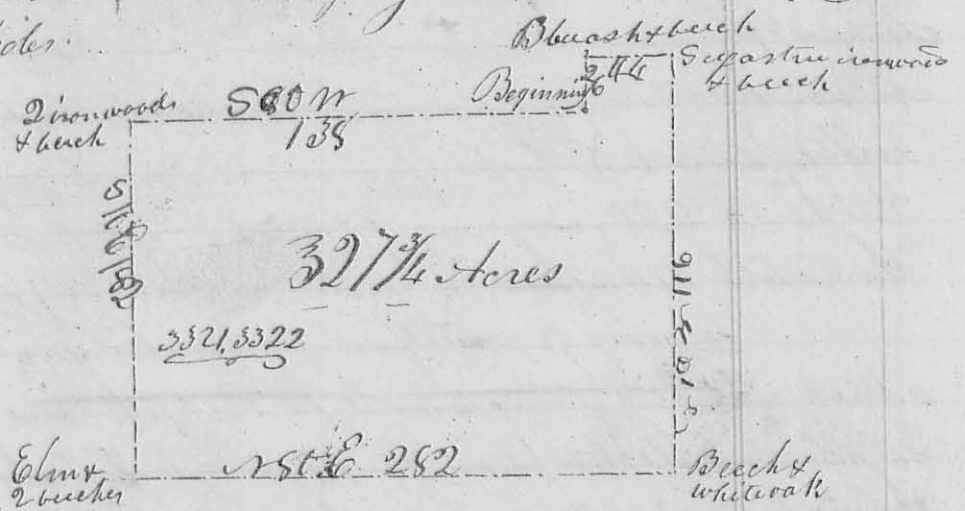
4th mo, April 10th 1831 Survey no 162

(255)

Surveyed 32 1/4 acres for David P. Alden

Beginning at a hickory and dead buck corner the King, there is a wash and buck marked at this place; thence $\text{S } 80^{\circ} \text{ W}$ crossing a branch at 30 poles, again at 78 poles, 238 poles to 2 ironwoods and buck; thence $\text{S } 10^{\circ} \text{ E}$ crossing a branch at 30 poles again at 117 poles, 182 poles to an elm and 2 beeches thence $\text{N } 85^{\circ} \text{ E } 282$ poles to a buck and fallen white oak, I marked another buck; thence $\text{N } 10^{\circ} \text{ W}$ crossing said road at 138 poles a branch at 144 poles

216 poles to a sugar tree ironwood and buck, thence $\text{S } 86^{\circ} \text{ W}$ crossing a spring branch at 11 poles 44 poles to a blue ash & elm & 2 beeches thence $\text{S } 10^{\circ} \text{ E}$ crossing a branch at 14 poles 26 poles to the beginning, being part of Layton Yancy's survey no 3321 & 3322 on the water of the Miami River



John Reams }
 Samuel Hayes }
 J. W. Marrison
 C. S. L. & C.