

Received 4-28-88

LESLIE H. GEESLIN
REGISTERED SURVEYOR NO. 5248
P. O. BOX 274
RUSHSVLVANIA, OHIO 43347

TELEPHONE: (513) 468-2793
REES SURVEY



April, 1988

Leslie H. Geeslin

The following described real estate situated in the State of Ohio, County of Logan, Township of Rushcreek, being part of Virginia Military Survey 3323 and more particularly described as follows:

Commencing at a 0.75 inch iron bar in the centerline of County Highway 5 that is N. $30^{\circ} 58'$ W. 439.5 feet from the intersection of said C.H. 5 and Township Road 136.

THENCE with said C.H. 5 N. $36^{\circ} 00'$ W. (this bearing is assumed and all other bearings are from angles and distances measured in this field survey) 176.09 feet to a mine spike for the beginning point of this description.

THENCE S. $77^{\circ} 17'$ W. 241.31 feet to a 0.625 inch iron bar, passing a 0.625 inch iron bar at 32.65 feet.

THENCE N. $36^{\circ} 00'$ W. 208.70 feet to a 0.625 inch iron bar.

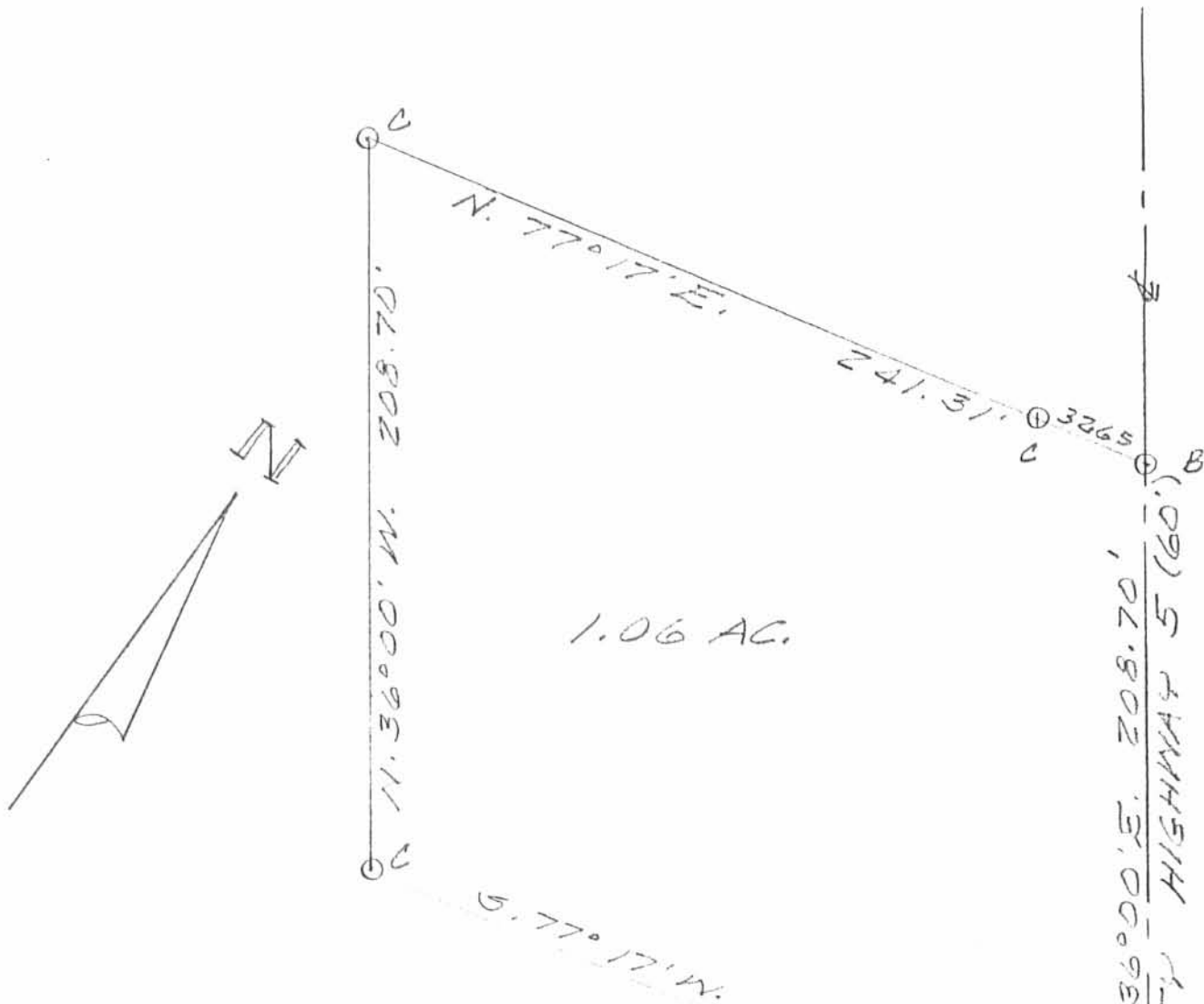
THENCE N. $77^{\circ} 17'$ E. 241.31 feet to a mine spike in the centerline of said C.H. 5, passing a 0.625 inch iron bar at 208.66 feet.

THENCE with said centerline S. $36^{\circ} 00'$ E. 208.70 feet to the place of beginning.

Containing 1.06 acres more or less.

The above described 1.06 acre tract being on the east side of Chester Alspaugh's 108.74 acre tract as described in D.B. Vol. 199 Page 392.

INDEXED ON MAP
77621D



1.06 AC.

SURVEY OF 1.06 AC. TRACT
 IN VIRGINIA MILITARY SURVEY
 3323, RUSHCREEK TOWNSHIP,
 LOGAN COUNTY, OHIO FOR
 BRYAN REES.

APRIL, 1958
 SCALE: 1" = 50'

LEGEND :

- A = 3/4" IRON BAR FD
- B = MINE SPIKE SET
- C = 5/8" IRON BAR SET

STA 38+42.5
 FB 588 PG 68



Leslie H. Geeslin
 LESLIE H. GEESLIN
 RUSHSVLVANIA, OHIO

INDEXED ON MAP
 7762 1P

T.R. 136

839.5
 N. 30°58' W

Rec'd 4-28-03 GML/OL

Lee Surveying and Mapping Co., Inc.

Land Surveys • Topography • Subdivisions • Construction Layout

117 N. Madriver St.
Bellefontaine OH 43311



Phone: (937) 593-7335
Fax: (937) 593-7444

ALSPAUGH 1.801 ACRES

Lying in Virginia Military Survey 3323, Rushcreek Township, Logan County, Ohio.

Being out of the Chester A. Alspaugh and Helen L. Alspaugh original 86.89 acre tract as deeded and described in Volume 199, Page 392, first tract of the Logan County Records of Deeds and being more particularly described as follows:

Beginning at a 5/8 inch iron rod found at the intersection of the center-lines of County Road 5 and Township Road 136.

THENCE, with the center-line of Township Road 136 (40 feet wide), S 84°-00'-00"W, a distance of 431.00 feet to a MAG nail set.

THENCE, S 11°-20'-13"E, a distance of 525.09 feet to a 5/8 inch iron rod set, passing a 5/8 inch iron rod set at 15.09 feet.

THENCE, S 83°-53'-36"W, a distance of 149.97 feet to a 5/8 inch iron rod set.

THENCE, N 11°-20'-13"W, a distance of 525.37 feet to a MAG nail set, passing a 5/8 inch iron rod set at 510.30 feet.

THENCE, with the center-line of Township Road 136, N 84°-00'-00"E, a distance of 150.00 feet to the point of beginning.

Containing 1.801 acres, of which 0.052 acre is within the highway right-of-way.

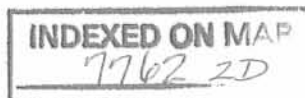
The basis for bearings is the center-line of Township Road 136, being N 84°-00'-00"E, and all other bearings are from angles and distances measured in a field survey by Lee Surveying and Mapping Co., Inc. on April 4, 2003.



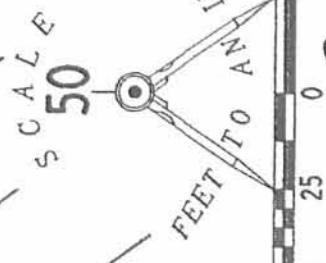
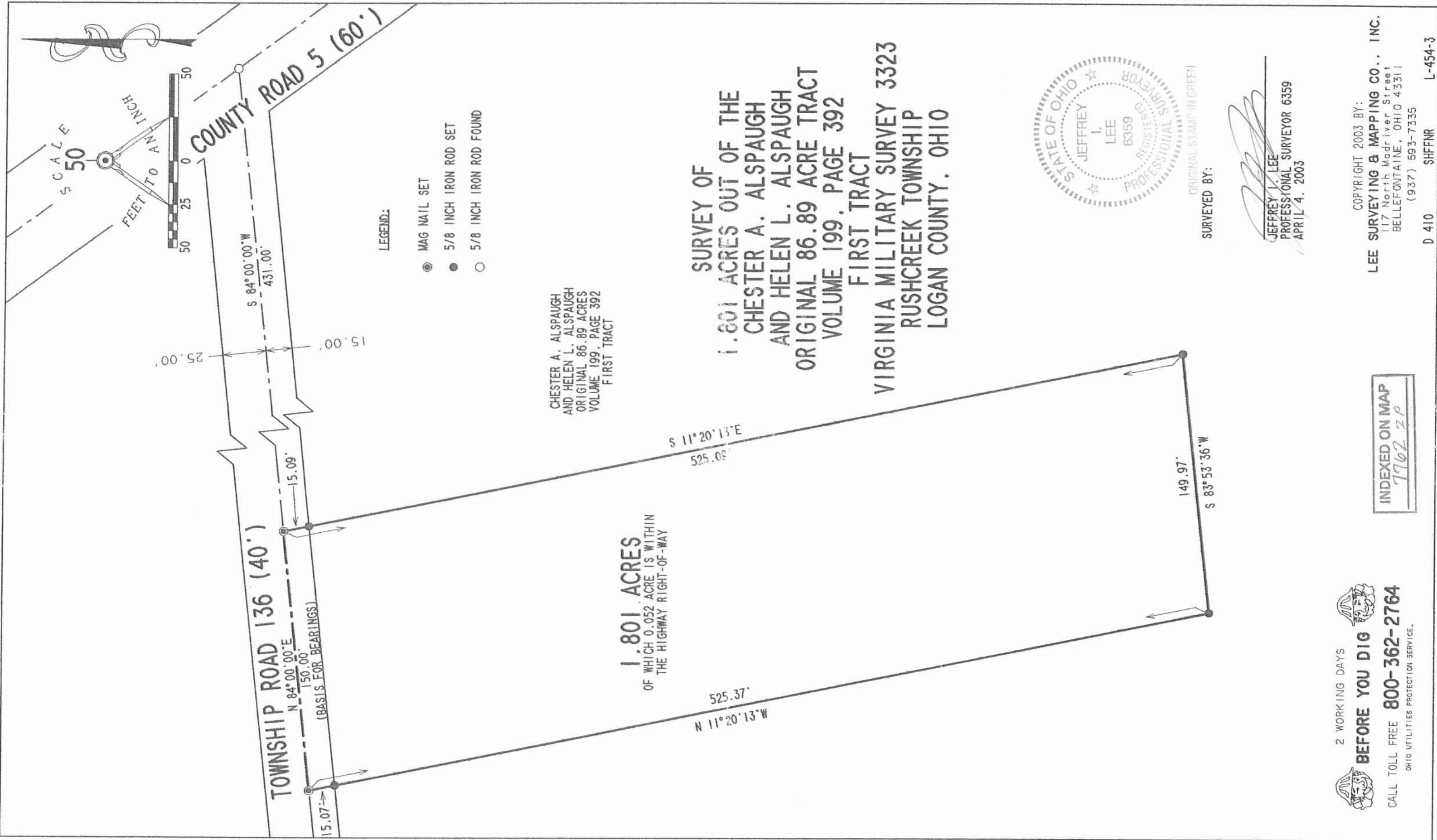
ORIGINAL STAMP IN GREEN

Description prepared by:

Jeffrey I. Lee
Professional Surveyor 6359
April 18, 2003



L-454



LEGEND:

- MAG NAIL SET
- 5/8 INCH IRON ROD SET
- 5/8 INCH IRON ROD FOUND

CHESTER A. ALSPAUGH
AND HELEN L. ALSPAUGH
ORIGINAL 86.89 ACRES
VOLUME 199, PAGE 392
FIRST TRACT

1.801 ACRES
OF WHICH 0.052 ACRE IS WITHIN
THE HIGHWAY RIGHT-OF-WAY

**SURVEY OF
1.801 ACRES OUT OF THE
CHESTER A. ALSPAUGH
AND HELEN L. ALSPAUGH
ORIGINAL 86.89 ACRE TRACT
VOLUME 199, PAGE 392
FIRST TRACT
VIRGINIA MILITARY SURVEY 3323
RUSHCREEK TOWNSHIP
LOGAN COUNTY, OHIO**



ORIGINAL STAMP IN GREEN
SURVEYED BY:

Jeffrey I. Lee
JEFFREY I. LEE
PROFESSIONAL SURVEYOR 6359
APRIL 4, 2003

2 WORKING DAYS
BEFORE YOU DIG
CALL TOLL FREE **800-362-2764**
OHIO UTILITIES PROTECTION SERVICE.

INDEXED ON MAP
7762 ZP

COPYRIGHT 2003 BY:
LEE SURVEYING & MAPPING CO., INC.
117 North Madriver Street
BELLEFONTAINE, OHIO 43311
(937) 593-7335

D 410 SHFFNR L-454-3

Received 6-13-03 OK gm

Lee Surveying and Mapping Co., Inc.

Land Surveys • Topography • Subdivisions • Construction Layout

117 N. Madriver St.
Bellefontaine OH 43311



Phone: (937) 593-7335
Fax: (937) 593-7444

ALSPAUGH 2.042 ACRES

Lying in Virginia Military Survey 3323, Rushcreek Township, Logan County, Ohio.

Being out of the Chester A. Alspaugh and Helen L. Alspaugh original 86.89 acre tract as deeded and described in Volume 199, Page 392, first tract of the Logan County Records of Deeds and being more particularly described as follows:

Beginning at a 5/8 inch iron rod found at the intersection of the center-lines of County Road 5 and Township Road 136.

THENCE, with the center-line of Township Road 136 (40 feet wide), S 84°-00'-00"W, a distance of 431.00 feet to a MAG nail set at the TRUE POINT OF BEGINNING.

THENCE, S 11°-20'-13"E, a distance of 525.09 feet to a 5/8 inch iron rod set, passing a 5/8 inch iron rod set at 15.09 feet.

THENCE, S 83°-53'-36"W, a distance of 170.05 feet to a 5/8 inch iron rod set.

THENCE, N 11°-20'-13"W, a distance of 525.41 feet to a MAG nail set, passing a 5/8 inch iron rod set at 510.32 feet.

THENCE, with the center-line of Township Road 136, N 84°-00'-00"E, a distance of 170.08 feet to the point of beginning.

Containing 2.042 acres, of which 0.059 acre is within the highway right-of-way.

The basis for bearings is the center-line of Township Road 136, being N 84°-00'-00"E, and all other bearings are from angles and distances measured in a field survey by Lee Surveying and Mapping Co., Inc. on April 4, 2003.

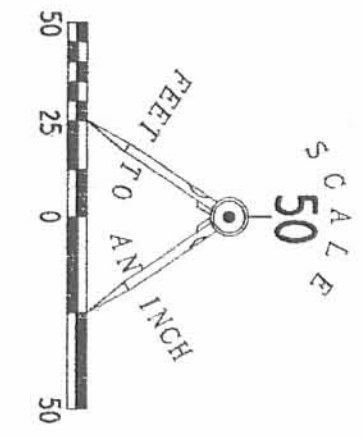
Description prepared by:



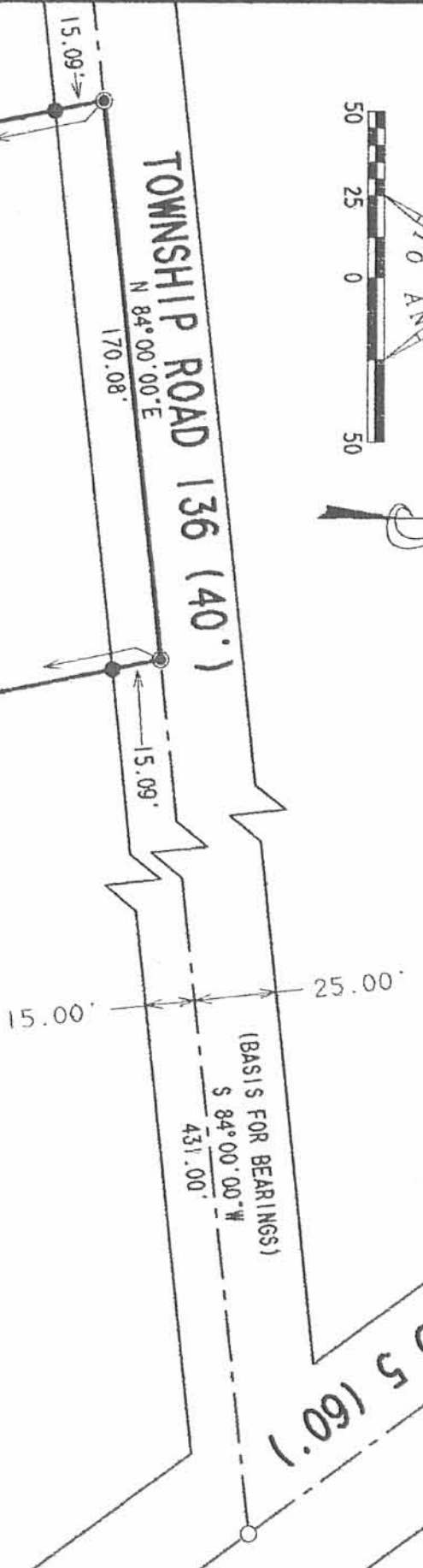
A handwritten signature in black ink, appearing to read 'J. Lee'.

Jeffrey I. Lee
Professional Surveyor 6359
April 18, 2003
Revised June 9, 2003

L-454



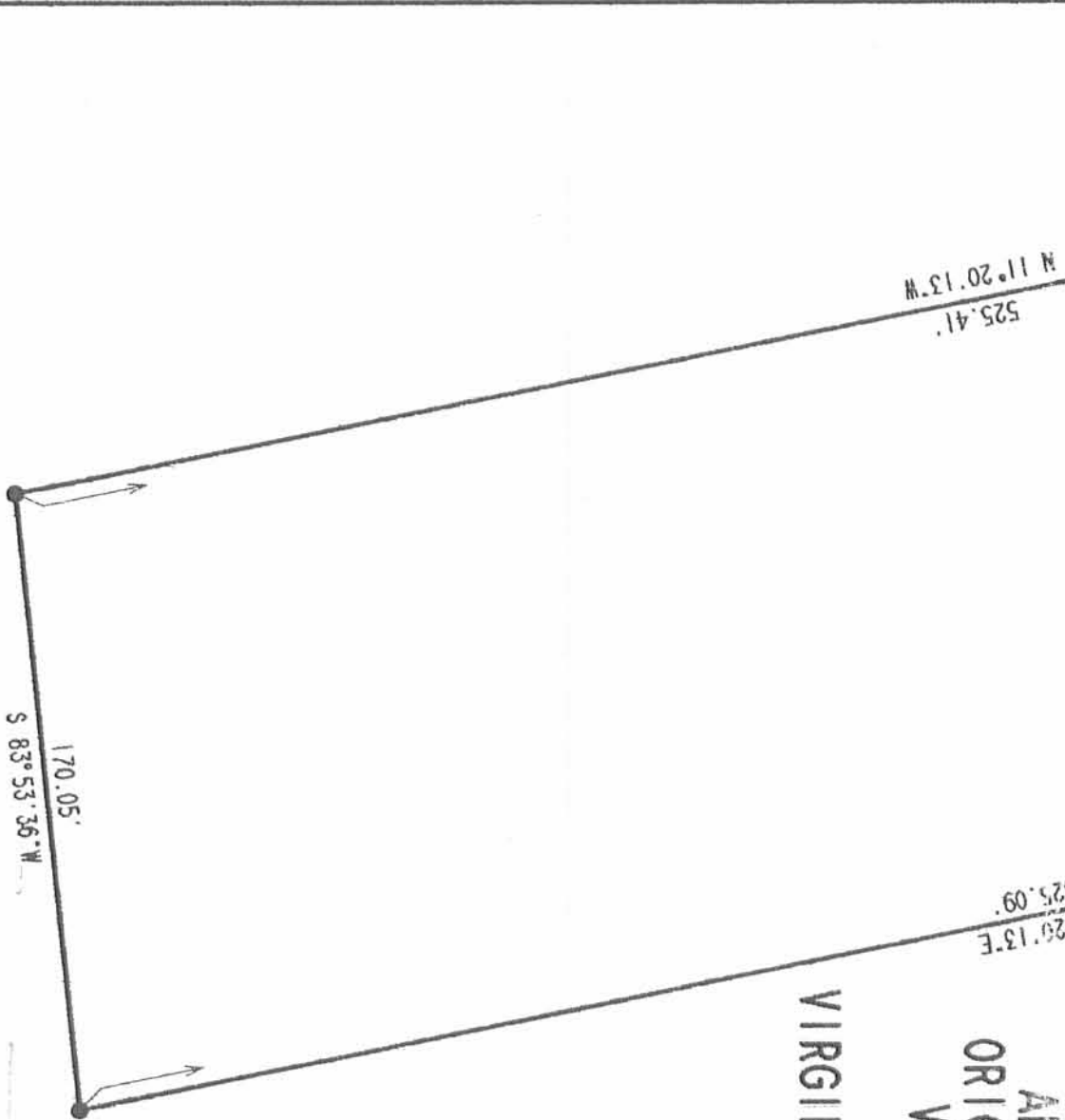
- LEGEND:
- MAG NAIL SET
 - 5/8 INCH IRON ROD SET
 - 5/8 INCH IRON ROD FOUND



2.042 ACRES
OF WHICH 0.059 ACRE IS WITHIN
THE HIGHWAY RIGHT-OF-WAY

CHESTER A. ALSPAUGH
AND HELEN L. ALSPAUGH
ORIGINAL 86.89 ACRES
VOLUME 199, PAGE 392
FIRST TRACT

SURVEY OF
2.042 ACRES OUT OF THE
CHESTER A. ALSPAUGH
AND HELEN L. ALSPAUGH
ORIGINAL 86.89 ACRE TRACT
VOLUME 199, PAGE 392
FIRST TRACT
VIRGINIA MILITARY SURVEY 3323
RUSHCREEK TOWNSHIP
LOGAN COUNTY, OHIO



SURVEYED BY:

[Signature]

JEFFREY L. LEE
PROFESSIONAL SURVEYOR 6359
APRIL 4, 2003
REVISED JUNE 9, 2003

COPYRIGHT 2003 BY:
LEE SURVEYING & MAPPING CO., INC.
117 North Madison Street
BELLEFONTAINE, OHIO 43311
(937) 593-7335



2 WORKING DAYS
BEFORE YOU DIG
CALL TOLL FREE **800-362-2764**
OHIO UTILITIES PROTECTION SERVICE.

INDEXED ON MAP
[Handwritten]

REC'D 6-27-03 SJM GK

Lee Surveying and Mapping Co., Inc.

Land Surveys • Topography • Subdivisions • Construction Layout

117 N. Madriver St.
Bellefontaine OH 43311



Phone: (937) 593-7335
Fax: (937) 593-7444

ALSPAUGH 39.909 ACRES TRACT A

Lying in Virginia Military Survey 3323, Rushcreek Township, Logan County, Ohio.

Being out of the Chester A. Alspaugh and Helen L. Alspaugh original 86.89 acre tract as deeded and described in Volume 199, Page 392, First Tract of the Logan County Records of deeds and being more particularly described as follows:

Beginning at a 5/8 inch iron rod found at the intersection of the center-lines of County Highway 5 and Township Road 136.

THENCE, with the center-line of Township Road 136 (40 feet wide), S 84°-00'-00"W, a distance of 601.08 feet to a MAG nail set at the TRUE POINT OF BEGINNING.

THENCE, with the lines of the Tasha D. Shoffner 2.042 acre tract (O.R. 657, Pg. 489), the following 2 (two) courses:

S 11°-20'-13"E, a distance of 525.41 feet to a 5/8 inch iron rod found, passing a 5/8 inch iron rod found at 15.06 feet;

N 83°-53'-36"E, a distance of 170.05 feet to a 5/8 inch iron rod found.

THENCE, N 71°-37'-06"E, a distance of 95.94 feet to a 5/8 inch iron rod set.

THENCE, S 25°12'-45"E, a distance of 616.06 feet to a 5/8 inch iron rod set.

THENCE, S 84°-01'-08"W, a distance of 217.53 feet to a 5/8 inch iron rod set.

THENCE, S 23°48'-08"E, a distance of 634.26 feet to a 5/8 inch iron rod set.

THENCE, with the lines of the Imogene Lenhart original 83.06 acre tract (O.R. 27, Pg. 804), the following 3 (three) courses:

S 84°-54'-40"W, a distance of 962.42 feet to a 5/8 inch iron rod set.

N 5°-58'-52"W, a distance of 588.84 feet to a 5/8 inch iron rod set.

S 84°-01'-07"W, a distance of 434.32 feet to a 5/8 inch iron rod set.

INDEXED ON MAP
7762 4D-1

Lee Surveying and Mapping Co., Inc.

Land Surveys • Topography • Subdivisions • Construction Layout

117 N. Madriver St.
Bellefontaine OH 43311



Phone: (937) 593-7335
Fax: (937) 593-7444

THENCE, with the east line of the Gerald E. Volk Inc. 124.25 acre tract (O.R. 58, Pg. 793), N 5°-29'-05"W, a distance of 1083.58 feet to a 5/8 inch iron rod found, passing a 5/8 inch iron rod set at 1068.58 feet.

THENCE, with the center-line of Township Road 136, N 84°-00'-00"E, a distance of 894.94 feet to the point of beginning.

Containing 39.909 acres, of which 0.311 acre is within the highway right-of-way.

The basis for bearings is the center-line of Township Road 136, being N 84°-00'-00"E, and all other bearings are from angles and distances measured in a field survey by Lee Surveying and Mapping Co., Inc. on August 15, 2003.

Description prepared by:



ORIGINAL STAMP IN GREEN

A handwritten signature in black ink, appearing to read 'Jeffrey I. Lee'.

Jeffrey I. Lee
Professional Surveyor 6359
August 20, 2003

L-454

INDEXED ON MAP

7762 4D-2

REC'D 8-29-03 SML OK

Lee Surveying and Mapping Co., Inc.

Land Surveys • Topography • Subdivisions • Construction Layout

117 N. Madriver St.
Bellefontaine OH 43311



Phone: (937) 593-7335
Fax: (937) 593-7444

ALSPAUGH 5.165 ACRES TRACT B

Lying in Virginia Military Survey 3323, Rushcreek Township, Logan County, Ohio.

Being out of the Chester A. Alspaugh and Helen L. Alspaugh original 86.89 acre tract as deeded and described in Volume 199, Page 392, First Tract of the Logan County Records of deeds and being more particularly described as follows:

Beginning at a 5/8 inch iron rod found at the intersection of the center-lines of County Highway 5 and Township Road 136.

THENCE, with the center-line of County Highway 5 (60 feet wide), S 23°-31'-18"E, a distance of 430.44 feet to a MAG nail set.

THENCE, S 71°-37'-06"W, a distance of 523.94 feet to a 5/8 inch iron rod found.

THENCE, with the east line of the Tasha D. Shoffner 2.042 acre tract (O.R. 657, Pg. 489), N 11°-20'-13"W, a distance of 525.09 feet to a MAG nail found, passing a 5/8 inch iron rod found at 510.03 feet.


THENCE, with the center-line of Township Road 136 (40 feet wide), N 84°-00'-00"E, a distance of 431.00 feet to the point of beginning.

Containing 5.165 acres, of which 0.437 acre is within the highway right-of-way.

The basis for bearings is the center-line of Township Road 136, being N 84°-00'-00"E, and all other bearings are from angles and distances measured in a field survey by Lee Surveying and Mapping Co., Inc. on August 15, 2003.

Description prepared by:




Jeffrey I. Lee
Professional Surveyor 6359
August 20, 2003

ORIGINAL STAMP IN GREEN

L-454

INDEXED ON
77624

REC'D 8-29-03 SML/OK

Lee Surveying and Mapping Co., Inc.

Land Surveys • Topography • Subdivisions • Construction Layout

117 N. Madriver St.
Bellefontaine OH 43311



Phone: (937) 593-7335
Fax: (937) 593-7444

ALSPAUGH 1.667 ACRES TRACT C

Lying in Virginia Military Survey 3323, Rushcreek Township, Logan County, Ohio.

Being out of the Chester A. Alspaugh and Helen L. Alspaugh original 86.89 acre tract as deeded and described in Volume 199, Page 392, First Tract of the Logan County Records of deeds and being more particularly described as follows:

Beginning at a 5/8 inch iron rod found at the intersection of the center-lines of County Highway 5 and Township Road 136.

THENCE, with the center-line of County Highway 5 (60 feet wide), S 23°-31'-18"E, a distance of 430.44 feet to a MAG nail set at the TRUE POINT OF BEGINNING.

THENCE, continuing with the center-line of County Highway 5, S 23°-31'-18"E, a distance of 163.52 feet to a MAG nail set.

THENCE, S 69°-29'-29"W, a distance of 421.56 feet to a 5/8 inch iron rod set, passing a 5/8 inch iron rod set at 30.00 feet.

THENCE, N 25°-12'-45"W, a distance of 179.78 feet to a 5/8 inch iron rod set.

THENCE, N 71°-37'-06"E, a distance of 428.00 feet to the point of beginning, passing a 5/8 inch iron rod set at 397.94 feet.

Containing 1.667 acres, of which 0.113 acre is within the highway right-of-way.

The basis for bearings is the center-line of Township Road 136, being N 84°-00'-00"E, and all other bearings are from angles and distances measured in a field survey by Lee Surveying and Mapping Co., Inc. on August 15, 2003.

Description prepared by:



Jeffrey I. Lee
Professional Surveyor 6359
August 20, 2003

L-454

INDEXED ON M
7762-1

REC'D 8-29-03 SMJ/OK

Lee Surveying and Mapping Co., Inc.

Land Surveys • Topography • Subdivisions • Construction Layout

117 N. Madriver St.
Bellefontaine OH 43311



Phone: (937) 593-7335
Fax: (937) 593-7444

ALSPAUGH 1.647 ACRES TRACT D

Lying in Virginia Military Survey 3323, Rushcreek Township, Logan County, Ohio.

Being out of the Chester A. Alspaugh and Helen L. Alspaugh original 86.89 acre tract as deeded and described in Volume 199, Page 392, First Tract of the Logan County Records of deeds and being more particularly described as follows:

Beginning at a 5/8 inch iron rod found at the intersection of the center-lines of County Highway 5 and Township Road 136.

THENCE, with the center-line of County Highway 5 (60 feet wide), S 23°-31'-18"E, a distance of 593.96 feet to a MAG nail set at the TRUE POINT OF BEGINNING.

THENCE, continuing with the center-line of County Highway 5, S 23°-31'-18"E, a distance of 163.52 feet to a MAG nail set.

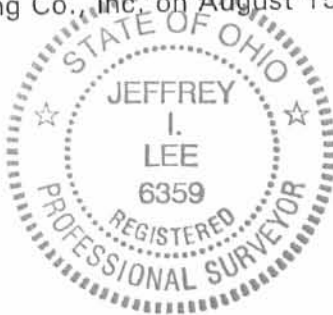
THENCE, S 67°-18'-06"W, a distance of 415.71 feet to a 5/8 inch iron rod set, passing a 5/8 inch iron rod 30.00 feet.

THENCE, N 25°-12'-45"W, a distance of 179.78 feet to a 5/8 inch iron rod set.

THENCE, N 69°-29'-29"E, a distance of 421.56 feet to a the point of beginning, passing a 5/8 inch iron rod set at 391.56 feet.

Containing 1.647 acres, of which 0.113 acre is within the highway right-of-way.

The basis for bearings is the center-line of Township Road 136, being N 84°-00'-00"E, and all other bearings are from angles and distances measured in a field survey by Lee Surveying and Mapping Co., Inc. on August 15, 2003.



ORIGINAL STAMP IN GREEN

Description prepared by:

Jeffrey I. Lee
Professional Surveyor 6359
August 20, 2003

L-454

INDEXED ON M
77624

REC'D 8-29-03 5M10K

Lee Surveying and Mapping Co., Inc.

Land Surveys • Topography • Subdivisions • Construction Layout

117 N. Madriver St.
Bellefontaine OH 43311



Phone: (937) 593-7335
Fax: (937) 593-7444

ALSPAUGH 3.000 ACRES TRACT E

Lying in Virginia Military Survey 3323, Rushcreek Township, Logan County, Ohio.

Being out of the Chester A. Alspaugh and Helen L. Alspaugh original 86.89 acre tract as deeded and described in Volume 199, Page 392, First Tract of the Logan County Records of deeds and being more particularly described as follows:

Beginning at a 5/8 inch iron rod found at the intersection of the center-lines of County Highway 5 and Township Road 136.

THENCE, with the center-line of County Highway 5 (60 feet wide), S 23°-31'-18"E, a distance of 757.48 feet to a MAG nail set at the TRUE POINT OF BEGINNING.

THENCE, continuing with the center-line of County Highway 5, S 23°-31'-18"E, a distance of 379.41 feet to a MAG nail set.

THENCE, S 84°-01'-08"W, a distance of 428.00 feet to a 5/8 inch iron rod set, passing a 5/8 inch iron rod set at 31.50 feet.

THENCE, N 25°-12'-45"W, a distance of 256.50 feet to a 5/8 inch iron rod set.

THENCE, N 67°-18'-06"E, a distance of 415.71 feet to the point of beginning, passing a 5/8 inch iron rod set at 385.71 feet.

Containing 3.000 acres, of which 0.258 acre is within the highway right-of-way.

The basis for bearings is the center-line of Township Road 136, being N 84°-00'-00"E, and all other bearings are from angles and distances measured in a field survey by Lee Surveying and Mapping Co., Inc. on August 15, 2003.



Description prepared by:

Jeffrey I. Lee
Professional Surveyor 6359
August 20, 2003

L-454

INDEXED ON MA
776212

REC'D 8-29-03 SML/alc

Lee Surveying and Mapping Co., Inc.

Land Surveys • Topography • Subdivisions • Construction Layout

117 N. Madriver St.
Bellefontaine OH 43311



Phone: (937) 593-7335
Fax: (937) 593-7444

ALSPAUGH 3.005 ACRES TRACT F

Lying in Virginia Military Survey 3323, Rushcreek Township, Logan County, Ohio.

Being out of the Chester A. Alspaugh and Helen L. Alspaugh original 86.89 acre tract as deeded and described in Volume 199, Page 392, First Tract of the Logan County Records of deeds and being more particularly described as follows:

Beginning at a 5/8 inch iron rod found at the intersection of the center-lines of County Highway 5 and Township Road 136.

THENCE, with the center-line of County Highway 5 (60 feet wide), S 23°-31'-18"E, a distance of 1136.89 feet to a MAG nail set at the TRUE POINT OF BEGINNING.

THENCE, continuing with the center-line of County Highway 5, S 23°-31'-18"E, a distance of 214.61 feet to a MAG nail set.

THENCE, S 84°-18'-58"W, a distance of 645.51 feet to a 5/8 inch iron rod set, passing a 5/8 inch iron rod set at 31.51 feet.

THENCE, N 23°-48'-08"W, a distance of 211.42 feet to a 5/8 inch iron rod set.

THENCE, N 84°-01'-08"E, a distance of 645.53 feet to the point of beginning, passing 5/8 inch iron rods set at 217.53 feet and 614.03 feet.

Containing 3.005 acres, of which 0.148 acre is within the highway right-of-way.

The basis for bearings is the center-line of Township Road 136, being N 84°-00'-00"E, and all other bearings are from angles and distances measured in a field survey by Lee Surveying and Mapping Co., Inc. on August 15, 2003.



Description prepared by:

A handwritten signature in black ink, appearing to read 'Jeffrey I. Lee'.

Jeffrey I. Lee
Professional Surveyor 6359
August 20, 2003

L-454

INDEXED ON MAP
7762 12

DEED 8-29-03 S.M.Y.O.K.

Lee Surveying and Mapping Co., Inc.

Land Surveys • Topography • Subdivisions • Construction Layout

117 N. Madriver St.
Bellefontaine OH 43311



Phone: (937) 593-7335
Fax: (937) 593-7444

ALSPAUGH 3.000 ACRES TRACT G

Lying in Virginia Military Survey 3323, Rushcreek Township, Logan County, Ohio.

Being out of the Chester A. Alspaugh and Helen L. Alspaugh original 86.89 acre tract as deeded and described in Volume 199, Page 392, First Tract of the Logan County Records of deeds and being more particularly described as follows:

Beginning at a 5/8 inch iron rod found at the intersection of the center-lines of County Highway 5 and Township Road 136.

THENCE, with the center-line of County Highway 5 (60 feet wide), S 23°-31'-18"E, a distance of 1351.50 feet to a MAG nail set at the TRUE POINT OF BEGINNING.

THENCE, continuing with the center-line of County Highway 5, S 23°-31'-18"E, a distance of 214.61 feet to a MAG nail set.

THENCE, S 84°-36'-49"W, a distance of 645.52 feet to a 5/8 inch iron rod set, passing a 5/8 inch iron rod set at 31.57 feet.

THENCE, N 23°-48'-08"W, a distance of 211.42 feet to a 5/8 inch iron rod set.

THENCE, N 84°-18'-58"E, a distance of 645.51 feet to a the point of beginning, passing a 5/8 inch iron rod set at 614.00 feet.

Containing 3.000 acres, of which 0.148 acre is within the highway right-of-way.

The basis for bearings is the center-line of Township Road 136, being N 84°-00'-00"E, and all other bearings are from angles and distances measured in a field survey by Lee Surveying and Mapping Co., Inc. on August 15, 2003.



Description prepared by:

Jeffrey I. Lee
Professional Surveyor 6359
August 20, 2003

L-454

INDEXED ON M
77624

REC'D 8-29-03 SJM

Lee Surveying and Mapping Co., Inc.

Land Surveys • Topography • Subdivisions • Construction Layout

117 N. Madriver St.
Bellefontaine OH 43311



Phone: (937) 593-7335
Fax: (937) 593-7444

ALSPAUGH 2.994 ACRES TRACT H

Lying in Virginia Military Survey 3323, Rushcreek Township, Logan County, Ohio.

Being out of the Chester A. Alspaugh and Helen L. Alspaugh original 86.89 acre tract as deeded and described in Volume 199, Page 392, First Tract of the Logan County Records of deeds and being more particularly described as follows:

Beginning at a 5/8 inch iron rod found at the intersection of the center-lines of County Highway 5 and Township Road 136.

THENCE, with the center-line of County Highway 5 (60 feet wide), S 23°-31'-18"E, a distance of 1566.11 feet to a MAG nail set at the TRUE POINT OF BEGINNING.

THENCE, continuing with the center-line of County Highway 5, S 23°-31'-18"E, a distance of 214.61 feet to a MAG nail set.

THENCE, with a north line of the Imogene Lenhart original 83.06 acre tract (O.R. 27, Pg. 804), S 84°-54'-40"W, a distance of 645.53 feet to a 5/8 inch iron rod set, passing a 5/8 inch iron rod set at 31.55 feet.

THENCE, N 23°-48'-08"W, a distance of 211.42 feet to a 5/8 inch iron rod set.

THENCE, N 84°-36'-49"E, a distance of 645.52 feet to the point of beginning, passing a 5/8 inch iron rod set at 613.95 feet.

Containing 2.994 acres, of which 0.148 acre is within the highway right-of-way.

The basis for bearings is the center-line of Township Road 136, being N 84°-00'-00"E, and all other bearings are from angles and distances measured in a field survey by Lee Surveying and Mapping Co., Inc. on August 15, 2003.

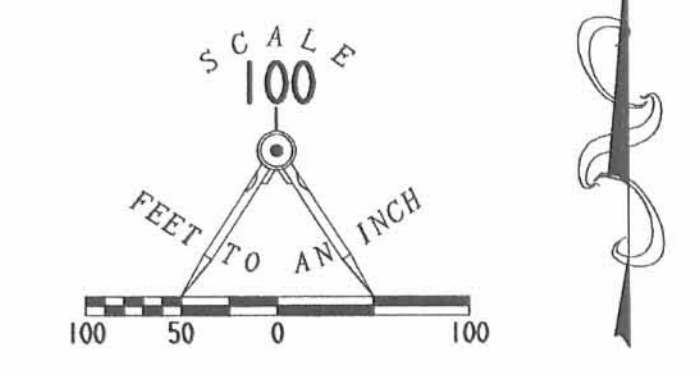


Description prepared by:

Jeffrey I. Lee
Professional Surveyor 6359
August 20, 2003

L-454

INDEXED ON MAP
7762 40-9



- LEGEND:
- 5/8 INCH IRON ROD SET
 - 5/8 INCH IRON ROD FOUND
 - MAG NAIL SET
 - MAG NAIL FOUND

GERALD E. VOLK INC.
124.25 ACRE TRACT
O.R. 58, PG. 793

TRACT A
39.909 ACRES
OF WHICH 0.311 ACRE IS WITHIN
HIGHWAY RIGHT-OF-WAY

CHESTER A. ALSPAUGH AND
HELEN L. ALSPAUGH
ORIGINAL 86.89 ACRE TRACT
VOL. 199, PG. 392.
FIRST TRACT

IMOGENE LENHART
ORIGINAL 83.06 ACRE TRACT
O.R. 27, PG. 804

TRACT B
5.165 ACRES
OF WHICH 0.437 ACRE IS WITHIN
THE HIGHWAY RIGHT-OF-WAY

TRACT C
1.667 ACRES
OF WHICH 0.113 ACRE IS WITHIN
THE HIGHWAY RIGHT-OF-WAY

TRACT D
1.647 ACRES
OF WHICH 0.113 ACRE IS WITHIN
THE HIGHWAY RIGHT-OF-WAY

TRACT E
3.000 ACRES
OF WHICH 0.258 ACRE IS WITHIN
THE HIGHWAY RIGHT-OF-WAY

TRACT F
3.005 ACRES
OF WHICH 0.148 ACRE IS WITHIN
THE HIGHWAY RIGHT-OF-WAY

TRACT G
3.000 ACRES
OF WHICH 0.148 ACRE IS WITHIN
THE HIGHWAY RIGHT-OF-WAY

TRACT H
2.994 ACRES
OF WHICH 0.148 ACRE IS WITHIN
THE HIGHWAY RIGHT-OF-WAY

**SURVEY OF EIGHT TRACTS OUT OF THE
CHESTER A. ALSPAUGH AND
HELEN L. ALSPAUGH
ORIGINAL 86.89 ACRE TRACT
VOLUME 199, PAGE 392, FIRST TRACT
VIRGINIA MILITARY SURVEY 3323
RUSHCREEK TOWNSHIP
LOGAN COUNTY, OHIO**



SURVEYED BY:
Jeffrey L. Lee
JEFFREY L. LEE
PROFESSIONAL SURVEYOR 6359
AUGUST 15, 2003

COPYRIGHT 2003 BY:
LEE SURVEYING & MAPPING CO., INC.
117 North Madriver Street
BELLEFONTAINE, OHIO 43311
(937) 593-7335

2 WORKING DAYS
BEFORE YOU DIG
CALL TOLL FREE 800-362-2764
OHIO UTILITIES PROTECTION SERVICE.

INDEXED ON MAP
7/10/02, 1P

REC'D 9-16-03 BMM/OK

Lee Surveying and Mapping Co., Inc.

Land Surveys • Topography • Subdivisions • Construction Layout

117 N. Madriver St.
Bellefontaine OH 43311



Phone: (937) 593-7335
Fax: (937) 593-7444

ALSPAUGH 39.909 ACRES TRACT A

Lying in Virginia Military Survey 3323, Rushcreek Township, Logan County, Ohio.

Being out of the Chester A. Alspaugh and Helen L. Alspaugh original 86.89 acre tract as deeded and described in Volume 199, Page 392, First Tract of the Logan County Records of deeds and being more particularly described as follows:

Beginning at a 5/8 inch iron rod found at the intersection of the center-lines of County Highway 5 and Township Road 136.

THENCE, with the center-line of Township Road 136 (40 feet wide), S 84°-00'-00"W, a distance of 601.08 feet to a MAG nail found at the TRUE POINT OF BEGINNING.

THENCE, with the lines of the Tasha D. Shoffner 2.042 acre tract (O.R. 657, Pg. 489), the following 2 (two) courses:

S 11°-20'-13"E, a distance of 525.41 feet to a 5/8 inch iron rod found, passing a 5/8 inch iron rod found at 15.06 feet;

N 83°-53'-36"E, a distance of 170.05 feet to a 5/8 inch iron rod found.

THENCE, N 71°-37'-06"E, a distance of 95.94 feet to a 5/8 inch iron rod set.

THENCE, S 25°12'-45"E, a distance of 616.06 feet to a 5/8 inch iron rod set.

THENCE, S 84°-01'-08"W, a distance of 217.53 feet to a 5/8 inch iron rod set.

THENCE, S 23°48'-08"E, a distance of 634.26 feet to a 5/8 inch iron rod set.

THENCE, with the lines of the Imogene Lenhart original 83.06 acre tract (O.R. 27, Pg. 804), the following 3 (three) courses:

S 84°-54'-40"W, a distance of 962.42 feet to a 5/8 inch iron rod set.

N 5°-58'-52"W, a distance of 588.84 feet to a 5/8 inch iron rod set.

S 84°-01'-07"W, a distance of 434.32 feet to a 5/8 inch iron rod set.

REVID 9-14-03 DM/OU

Lee Surveying and Mapping Co., Inc.

Land Surveys • Topography • Subdivisions • Construction Layout

117 N. Madriver St.
Bellefontaine OH 43311



Phone: (937) 593-7335
Fax: (937) 593-7444

THENCE, with the east line of the Gerald E. Volk Inc. 124.25 acre tract (O.R. 58, Pg. 793), N 5°-29'-05"W, a distance of 1083.58 feet to a 5/8 inch iron rod found, passing a 5/8 inch iron rod set at 1068.58 feet.

THENCE, with the center-line of Township Road 136, N 84°-00'-00"E, a distance of 894.94 feet to the point of beginning.

Containing 39.909 acres, of which 0.311 acre is within the highway right-of-way.

The basis for bearings is the center-line of Township Road 136, being N 84°-00'-00"E, and all other bearings are from angles and distances measured in a field survey by Lee Surveying and Mapping Co., Inc. on August 15, 2003.

Description prepared by:



ORIGINAL STAMP IN GREEN

A handwritten signature in black ink, appearing to read 'J. Lee'.

Jeffrey I. Lee
Professional Surveyor 6359
August 20, 2003

L-454

INDEXED ON MAP
7762 5D-2

REV'D 9-14-03 SM OK

Lee Surveying and Mapping Co., Inc.

Land Surveys • Topography • Subdivisions • Construction Layout

117 N. Madriver St.
Bellefontaine OH 43311



Phone: (937) 593-7335
Fax: (937) 593-7444

ALSPAUGH 5.165 ACRES TRACT B

Lying in Virginia Military Survey 3323, Rushcreek Township, Logan County, Ohio.

Being out of the Chester A. Alspaugh and Helen L. Alspaugh original 86.89 acre tract as deeded and described in Volume 199, Page 392, First Tract of the Logan County Records of deeds and being more particularly described as follows:

Beginning at a 5/8 inch iron rod found at the intersection of the center-lines of County Highway 5 and Township Road 136.

THENCE, with the center-line of County Highway 5 (60 feet wide), S 23°-31'-18"E, a distance of 430.44 feet to a MAG nail set.

THENCE, S 71°-37'-06"W, a distance of 523.94 feet to a 5/8 inch iron rod found.

THENCE, with the east line of the Tasha D. Shoffner 2.042 acre tract (O.R. 657, Pg. 489), N 11°-20'-13"W, a distance of 525.09 feet to a MAG nail found, passing a 5/8 inch iron rod found at 510.03 feet.

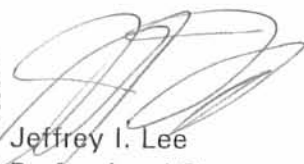
THENCE, with the center-line of Township Road 136 (40 feet wide), N 84°-00'-00"E, a distance of 431.00 feet to the point of beginning.

Containing 5.165 acres, of which 0.437 acre is within the highway right-of-way.

The basis for bearings is the center-line of Township Road 136, being N 84°-00'-00"E, and all other bearings are from angles and distances measured in a field survey by Lee Surveying and Mapping Co., Inc. on August 15, 2003.

Description prepared by:




Jeffrey I. Lee
Professional Surveyor 6359
August 20, 2003

ORIGINAL STAMP IN GREEN

L-454

REC'D 9-16-03 SMMON

Lee Surveying and Mapping Co., Inc.

Land Surveys • Topography • Subdivisions • Construction Layout

117 N. Madriver St.
Bellefontaine OH 43311



Phone: (937) 593-7335
Fax: (937) 593-7444

ALSPAUGH 6.314 ACRES TRACT C-1

Lying in Virginia Military Survey 3323, Rushcreek Township, Logan County, Ohio.

Being out of the Chester A. Alspaugh and Helen L. Alspaugh original 86.89 acre tract as deeded and described in Volume 199, Page 392, First Tract of the Logan County Records of deeds and being more particularly described as follows:

Beginning at a 5/8 inch iron rod found at the intersection of the center-lines of County Highway 5 and Township Road 136.

THENCE, with the center-line of County Highway 5 (60 feet wide), S 23°-31'-18"E, a distance of 430.44 feet to a MAG nail set at the TRUE POINT OF BEGINNING.

THENCE, continuing with the center-line of County Highway 5, S 23°-31'-18"E, a distance of 706.45 feet to a MAG nail set.

THENCE, S 84°-01'-08"W, a distance of 428.00 feet to a 5/8 inch iron rod set, passing a 5/8 inch iron rod set at 31.50 feet.

THENCE, N 25°-12'-45"W, a distance of 616.06 feet to a 5/8 inch iron rod set.

THENCE, N 71°-37'-06"E, a distance of 428.00 feet to the point of beginning, passing a 5/8 inch iron rod set at 397.94 feet.

Containing 6.314 acres, of which 0.484 acre is within the highway right-of-way.

The basis for bearings is the center-line of Township Road 136, being N 84°-00'-00"E, and all other bearings are from angles and distances measured in a field survey by Lee Surveying and Mapping Co., Inc. on August 15, 2003.



Description prepared by:

A handwritten signature in black ink, appearing to read 'J. Lee'.

Jeffrey L. Lee
Professional Surveyor 6359
August 20, 2003

L-454

ORIGINAL STAMP IN GREEN

REV'D 01-16-03 SMOK

Lee Surveying and Mapping Co., Inc.

Land Surveys • Topography • Subdivisions • Construction Layout

117 N. Madriver St.
Bellefontaine OH 43311



Phone: (937) 593-7335
Fax: (937) 593-7444

ALSPAUGH 8.999 ACRES TRACT F-1

Lying in Virginia Military Survey 3323, Rushcreek Township, Logan County, Ohio.

Being out of the Chester A. Alspaugh and Helen L. Alspaugh original 86.89 acre tract as deeded and described in Volume 199, Page 392, First Tract of the Logan County Records of deeds and being more particularly described as follows:

Beginning at a 5/8 inch iron rod found at the intersection of the center-lines of County Highway 5 and Township Road 136.

THENCE, with the center-line of County Highway 5 (60 feet wide), S 23°-31'-18"E, a distance of 1136.89 feet to a MAG nail set at the TRUE POINT OF BEGINNING.

THENCE, continuing with the center-line of County Highway 5, S 23°-31'-18"E, a distance of 643.83 feet to a MAG nail set.

THENCE, with the north line of the Imogene Lenhart original 83.06 acre tract (O.R. 27, Pg. 804), S 84°-54'-40"W, a distance of 645.53 feet to a 5/8 inch iron rod set, passing a 5/8 inch iron rod set at 31.55 feet.

THENCE, N 23°-48'-08"W, a distance of 634.26 feet to a 5/8 inch iron rod set.

THENCE, N 84°-01'-08"E, a distance of 645.53 feet to the point of beginning, passing 5/8 inch iron rods set at 217.53 feet and 614.03 feet.

Containing 8.999 acres, of which 0.444 acre is within the highway right-of-way.

The basis for bearings is the center-line of Township Road 136, being N 84°-00'-00"E, and all other bearings are from angles and distances measured in a field survey by Lee Surveying and Mapping Co., Inc. on August 15, 2003.

Description prepared by:

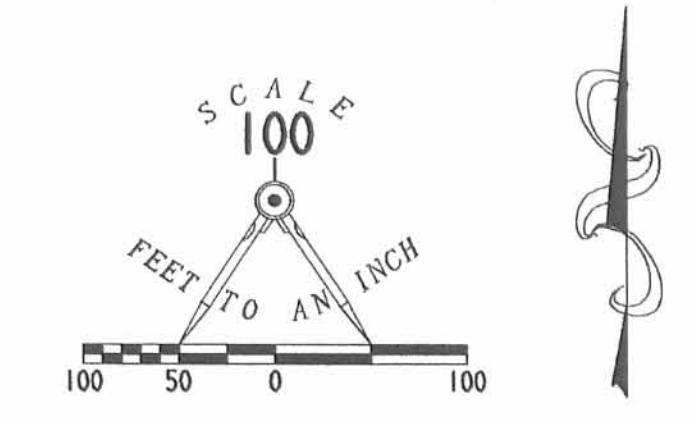
A handwritten signature in black ink, appearing to read 'Jeffrey I. Lee'.

Jeffrey I. Lee
Professional Surveyor 6359
August 20, 2003



ORIGINAL STAMP IN GREEN

L-454



- LEGEND:
- 5/8 INCH IRON ROD SET
 - 5/8 INCH IRON ROD FOUND
 - ⊙ MAG NAIL SET
 - MAG NAIL FOUND

**SURVEY OF FOUR TRACTS OUT OF THE
CHESTER A. ALSPAUGH AND
HELEN L. ALSPAUGH
ORIGINAL 86.89 ACRE TRACT
VOLUME 199, PAGE 392, FIRST TRACT
VIRGINIA MILITARY SURVEY 3323
RUSHCREEK TOWNSHIP
LOGAN COUNTY, OHIO**



SURVEYED BY:
Jeffrey L. Lee
JEFFREY L. LEE
PROFESSIONAL SURVEYOR 6359
AUGUST 15, 2003
REVISED SEPTEMBER 15, 2003

IMOGENE LEHART
ORIGINAL 83.06 ACRE TRACT
O.R. 27, PG. 804

2 WORKING DAYS
BEFORE YOU DIG
CALL TOLL FREE **800-362-2764**
OHIO UTILITIES PROTECTION SERVICE.

COPYRIGHT 2003 BY:
LEE SURVEYING & MAPPING CO., INC.
117 North Madriver Street
BELLEFONTAINE, OHIO 43311
(937) 593-7335

D 411 SHEFNRS L-454-1