

LESLIE H. GEESLIN  
REGISTERED SURVEYOR NO. 5248  
P. O. BOX 274  
RUSHSYLVANIA, OHIO 43347

PHONE: (513) 468-2793

LONGBRAKE SURVEY

June, 1979

The following described real estate situated in the State of Ohio, County of Logan, Township of Rushcreek and being part of Virginia Military Survey 9887 and more particularly described as follows:

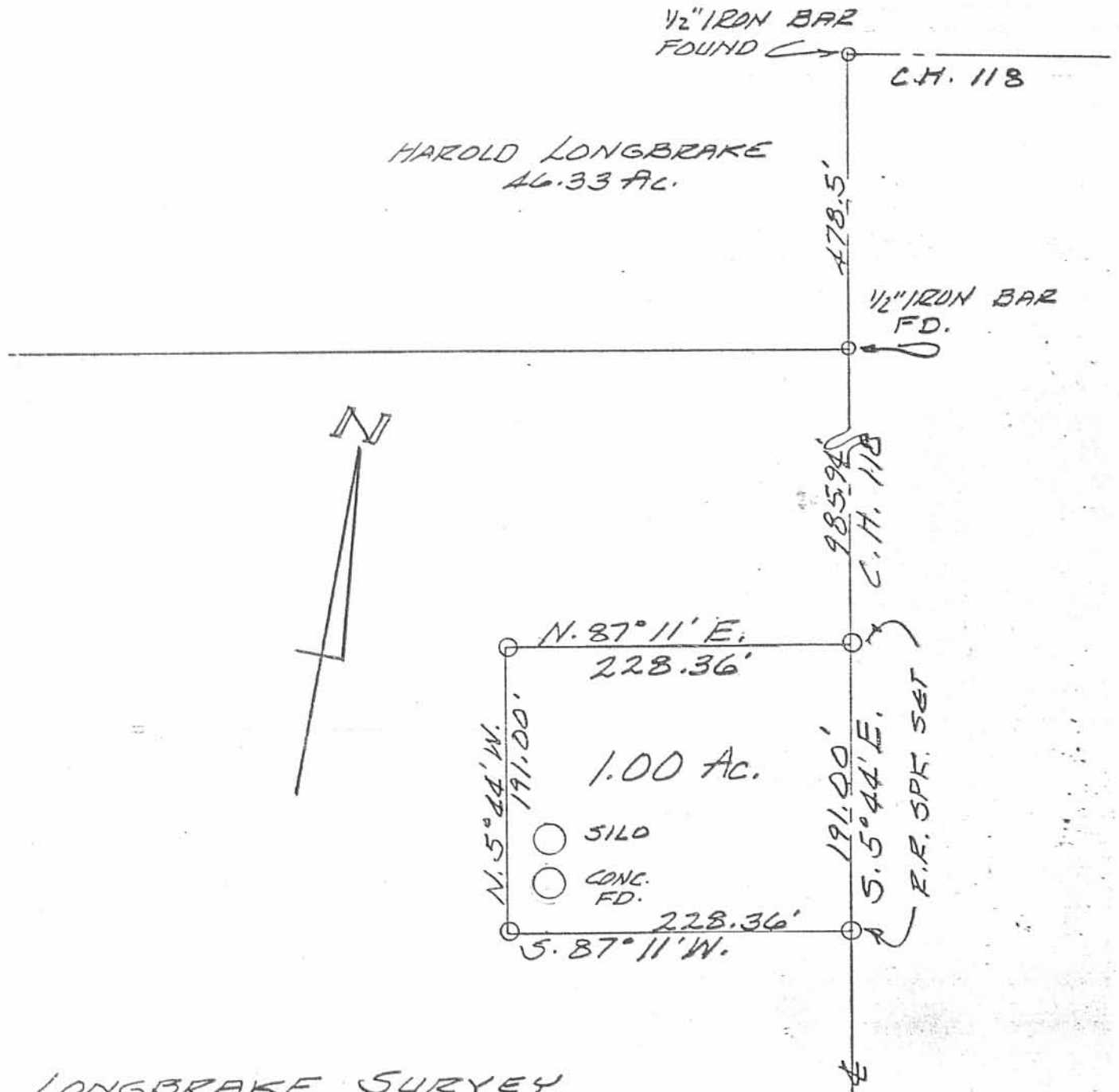
Beginning at an iron bar in the centerline of County Highway 118 that is S.  $5^{\circ} 44'$  E. 985.94 feet from an iron bar at the southeast corner of Harold Longbrakes 46.33 acre tract; thence with said centerline S.  $5^{\circ} 44'$  E. 191.00 feet to an iron bar; thence S.  $87^{\circ} 11'$  W. 228.36 feet to an iron bar; thence N.  $5^{\circ} 44'$  W. 191.00 feet to an iron bar; thence N.  $87^{\circ} 11'$  E. 228.36 feet to the place of beginning.

Containing 1.00 acre more or less.

The above described 1.00 acre being part of Harold Longbrake's 207.1 acre tract as described in D. B. Vol. 328 Pg. 863.

Reference is hereby made to a plat of this survey on file with the Logan County Engineer.

1D  
6308  
INDEX ON MAP



LONGBRAKE SURVEY  
 JUNE, 1979  
 VIRGINIA MILITARY SURVEY 9887  
 RUSHCREEK TOWNSHIP  
 LOGAN COUNTY, OHIO  
 SCALE 1" = 100'

6308 1P

INDEXED ON MAP



LESLIE H. GEESLIN  
 RUSHSYLVANIA, OHIO

Received 9-6-88

Oct. 9-8-88 CR

**LESLIE H. GEESLIN**  
REGISTERED SURVEYOR NO. 5248  
P. O. BOX 274  
RUSHSVLVANIA, OHIO 43347

TELEPHONE: (513) 468-2793

Longbrake Survey

September, 1988



*Leslie H. Geeslin*

The following described real estate situated in the State of Ohio, County of Logan, Township of Rushcreek, being part of Virginia Military Survey 9887 and more particularly described as follows:

Beginning at a 0.625 inch iron bar at the northeast corner of Harold Longbrake's 310.01 acre tract as described in D. B. Vol. 383 Page 864.

Thence with said Longbrake's east line and a line of Janeth Harvey's 82.5 acre tract as described in D. B. Vol. 203 Page 99 S. 5° 44' E. (this bearing is assumed and all other bearings are from angles and distances measured in this field survey) 394.88 feet to a railroad spike in the centerline of County Highway 118, passing a 0.625 inch iron bar at an angle in said highway at 348.88 feet.

Thence S. 83° 53' 39" W. 445.00 feet to a 0.625 inch iron bar.

Thence N. 5° 44' W. 394.88 feet to a 0.625 inch iron bar in a south line of said Harvey.

Thence with said south line N. 83° 53' 39" E. 445.00 feet to the place of beginning.

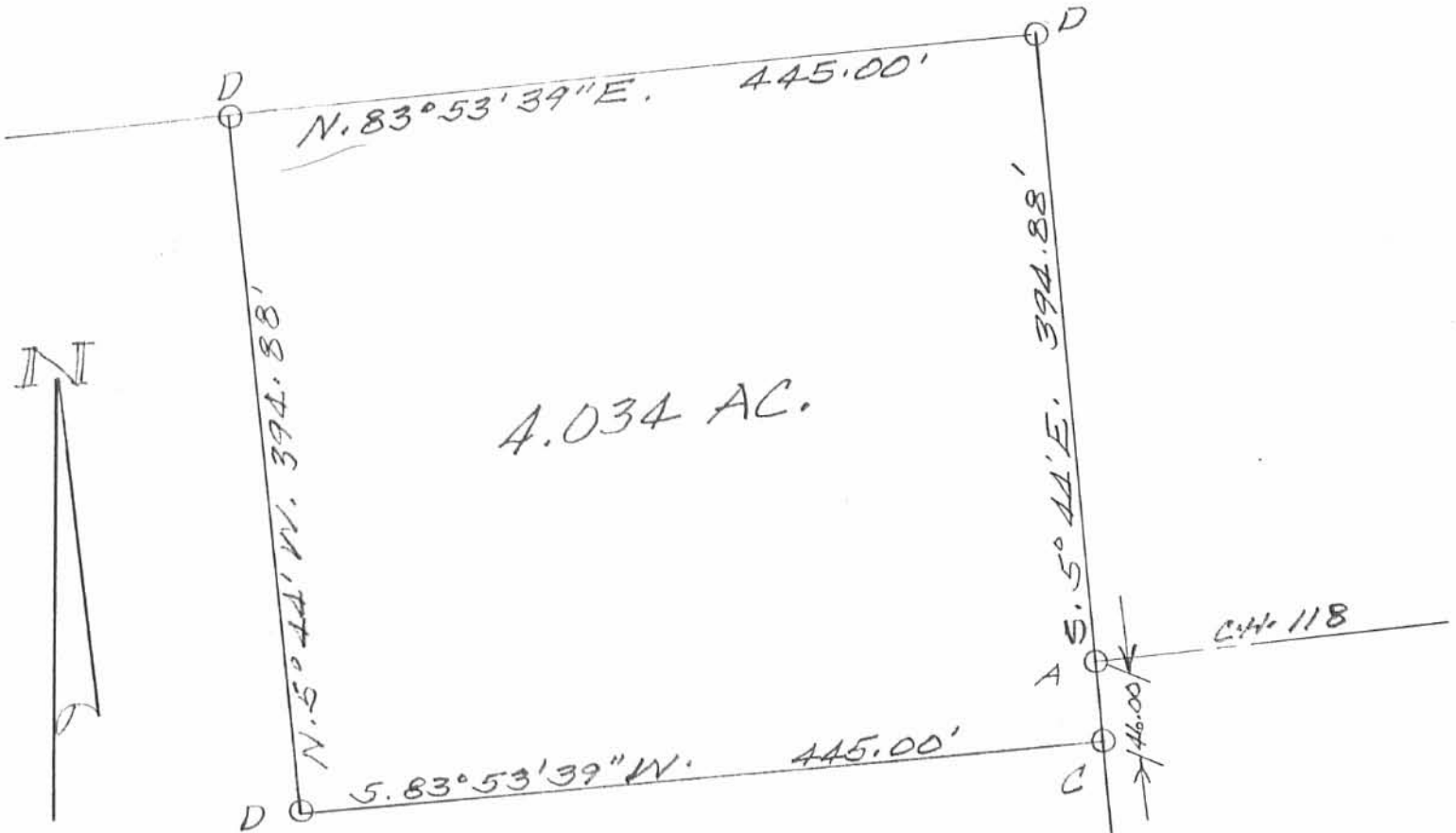
Containing 4.034 acres more or less.

The above 4.034 acre tract being in the northeast corner of Harold Lognbrake's 310.01 acre tract.

INDEXED ON MAP  
63082D

JANETH HARVEY  
82.5 AC.

D.B. VOL. 203 PG 99



HAROLD LONGBRAKE  
310.01 AC  
D.B. VOL. 383 PG 864

LEGEND

- A = T.O. 0.5" IRON BAR BENT REPLACED W/ 5/8" IRON BAR
- B = T.O. 0.5" IRON BAR
- C = R.R. SPIKE SET
- D = 5/8" IRON BAR SET

SURVEY OF 4.034 AC. TRACT IN  
VIRGINIA MILITARY SURVEY 9887,  
RUSHCREEK TOWNSHIP, LOGAN COUNTY,  
OHIO FOR HAROLD LONGBRAKE,  
SEPTEMBER, 1988  
SCALE: 1" = 100'

INDEXED ON MAP  
63082P

*Leslie H. Geeslin*  
LESLIE H. GEESLIN  
RUSHSVLVANIA, OHIO



478.71'  
COUNTY HWY. 118

7-8-13

# Lee Surveying and Mapping Co., Inc.

**APPROVED** Land Surveys • Topography • Subdivisions • Construction Layout

117 N. Madriver St.  
Bellefontaine OH 43311



Phone: (937) 593-7335  
Fax: (937) 593-7444  
surveys@lsminc.us

## Longbrake 2.256 Acres

Lying in Virginia Military Survey 9887, Rushcreek Township, Logan County, Ohio.

Being out of the Longbrake Farms Ltd., original 207.1 acre tract as deeded and described in Official Record 1056, Page 840, Tract IX, Parcel I of the Logan County Records of Deeds and being more particularly described as follows:

Commencing on a 5/8 inch iron rod found on an angle point on the center-line of County Highway 118 (Station 65+25 Logan County Engineer's Field Book 314, Page 35 and Field Book 521, Page 38).

THENCE, with the center-line of County Highway 118 (60 feet wide), S 06°-53'-24"E, a distance of 1652.14 feet to a MAG nail set at the TRUE POINT OF BEGINNING.

THENCE, with the center-line of County Highway 118, S 06°-53'-24"E, a distance of 296.00 feet to a MAG nail set.

THENCE, S 83°-06'-36"W, a distance of 332.00 feet to a 5/8 inch iron rod set, passing a 5/8 inch iron rod set at 30.00 feet.

THENCE, N 06°-53'-24"W, a distance of 296.00 feet to a 5/8 inch iron rod set.

THENCE, N 83°-06'-37"E, a distance of 332.00 feet to the point of beginning, passing a 5/8 inch iron rod set at 302.00 feet.

Containing 2.256 acres, of which 0.204 acre is within the highway right-of-way.

Property is subject to any and all previous easements and rights-of-way of record.

The basis for bearings is the center-line of County Highway 118, being S 06°-53'-24"E, and all other bearings are from angles and distances measured in a field survey by Lee Surveying and Mapping Co., Inc. on June 26, 2013.

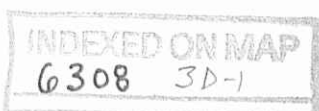


ORIGINAL STAMP IN GREEN

Description prepared by:

William K. Bruce  
Professional Surveyor 7437  
June 27, 2013

55630613



7-8-13

# Lee Surveying and Mapping Co., Inc.

**APPROVED** Land Surveys • Topography • Subdivisions • Construction Layout

117 N. Madriver St.  
Bellefontaine OH 43311



Phone: (937) 593-7335  
Fax: (937) 593-7444  
surveys@lsminc.us

## Longbrake INGRESS/EGRESS EASEMENT

Lying in Virginia Military Survey 9887, Rushcreek Township, Logan County, Ohio.

Being an ingress/egress easement over a portion of the Longbrake Farms Ltd., original 207.1 acre tract as deeded and described in Official Record 1056, Page 840, Tract IX, Parcel I of the Logan County Records of Deeds and being more particularly described as follows:

Commencing on a 5/8 inch iron rod found on an angle point on the center-line of County Highway 118 (Station 65+25 Logan County Engineer's Field Book 314, Page 35 and Field Book 521, Page 38).

THENCE, with the center-line of County Highway 118 (60 feet wide), S 06°-53'-24"E, a distance of 1652.14 feet to a MAG nail set.

THENCE, S 83°-06'-37"W, a distance of 160.99 feet to a point at the TRUE POINT OF BEGINNING, passing a 5/8 inch iron rod set at 30.00 feet.

THENCE, S 17°-38'-56"W, a distance of 16.49 feet to a point.

THENCE, S 86°-56'-37"W, a distance of 164.53 feet to a point.

THENCE, N 06°-53'-24"W, a distance of 4.00 feet to a 5/8 inch iron rod set

THENCE, N 83°-06'-37"E, a distance of 171.01 feet to the point of beginning.

The basis for bearings is the center-line of County Highway 118, being S 06°-53'-24"E, and all other bearings are from angles and distances measured in a field survey by Lee Surveying and Mapping Co., Inc. on June 26, 2013.

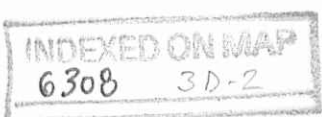


ORIGINAL STAMP IN GREEN

Description prepared by:

William K. Bruce  
Professional Surveyor 7437  
June 27, 2013

55630613



7-8-13

# Lee Surveying and Mapping Co., Inc.

**APPROVED** Land Surveys • Topography • Subdivisions • Construction Layout

117 N. Madriver St.  
Bellefontaine OH 43311



Phone: (937) 593-7335  
Fax: (937) 593-7444  
surveys@lsminc.us

## Longbrake 20.00 Feet Wide Ingress/Egress Easement #1

Lying in Virginia Military Survey 9887, Rushcreek Township, Logan County, Ohio.

Being a 20.00 feet wide ingress/egress easement over a portion of the Longbrake Farms Ltd., original 207.1 acre tract as deeded and described in Official Record 1056, Page 840, Tract IX, Parcel I of the Logan County Records of Deeds and being more particularly described as follows:

Commencing on a 5/8 inch iron rod found on an angle point on the center-line of County Highway 118 (Station 65+25 Logan County Engineer's Field Book 314, Page 35 and Field Book 521, Page 38).

THENCE, with the center-line of County Highway 118 (60 feet wide), S 06°-53'-24"E, a distance of 1652.14 feet to a MAG nail set.

THENCE, S 83°-06'-37"W, a distance of 150.00 feet to a point at the TRUE POINT OF BEGINNING, passing a 5/8 inch iron rod set at 30.00 feet.

THENCE, with the center-line of the 20.00 feet wide ingress/egress easement, the following five courses:

S 17°-38'-56"W, a distance of 99.50 feet to a point.

S 36°-09'-40"W, a distance of 48.50 feet to a point.

S 36°-09'-40"W, a distance of 81.42 feet to a point.

S 51°-59'-16"W, a distance of 42.91 feet to a point.

S 77°-59'-32"W, a distance of 15.31 feet to a point at the terminus of said easement, referenced by a 5/8 inch iron rod set bearing S 06°-53'-24"E, a distance of 87.00 feet.

The sidelines of said easement to be shortened or prolonged to meet at angle point intersections.

The basis for bearings is the center-line of County Highway 118, being S 06°-53'-24"E, and all other bearings are from angles and distances measured in a field survey by Lee Surveying and Mapping Co., Inc. on June 26, 2013.



ORIGINAL STAMP IN GREEN

Description prepared by:

William K. Bruce  
Professional Surveyor 7437  
June 27, 2013

55630613



7-8-13

# Lee Surveying and Mapping Co., Inc.



Land Surveys • Topography • Subdivisions • Construction Layout

117 N. Madriver St.  
Bellefontaine OH 43311



Phone: (937) 593-7335  
Fax: (937) 593-7444  
surveys@lsminc.us

## Longbrake 20.00 Feet Wide Ingress/Egress Easement #2

Lying in Virginia Military Survey 9887, Rushcreek Township, Logan County, Ohio.

Being a 20.00 feet wide ingress/egress easement over a portion of the Longbrake Farms Ltd., original 207.1 acre tract as deeded and described in Official Record 1056, Page 840, Tract IX, Parcel I of the Logan County Records of Deeds and being more particularly described as follows:

Commencing on a 5/8 inch iron rod found on an angle point on the center-line of County Highway 118 (Station 65+25 Logan County Engineer's Field Book 314, Page 35 and Field Book 521, Page 38).

THENCE, with the center-line of County Highway 118 (60 feet wide), S 06°-53'-24"E, a distance of 1652.14 feet to a MAG nail set.

THENCE, S 83°-06'-37"W, a distance of 150.00 feet to a point, passing a 5/8 inch iron rod set at 30.00 feet.

THENCE, S 17°-38'-56"W, a distance of 99.50 feet to a point.

THENCE, S 36°-09'-40"W, a distance of 48.50 feet to a point at the TRUE POINT OF BEGINNING.

THENCE, with the center-line of the 20.00 feet wide ingress/egress easement, N 88°-58'-26"W, a distance of 108.60 feet to a point at the terminus of said easement, referenced by a 5/8 inch iron rod set bearing S 06°-53'-24"E, a distance of 185.00 feet.

The sidelines of said easement to be shortened or prolonged to meet at angle point intersections.

The basis for bearings is the center-line of County Highway 118, being S 06°-53'-24"E, and all other bearings are from angles and distances measured in a field survey by Lee Surveying and Mapping Co., Inc. on June 26, 2013.



ORIGINAL STAMP IN GREEN

Description prepared by:

William K. Bruce  
Professional Surveyor 7437  
June 27, 2013

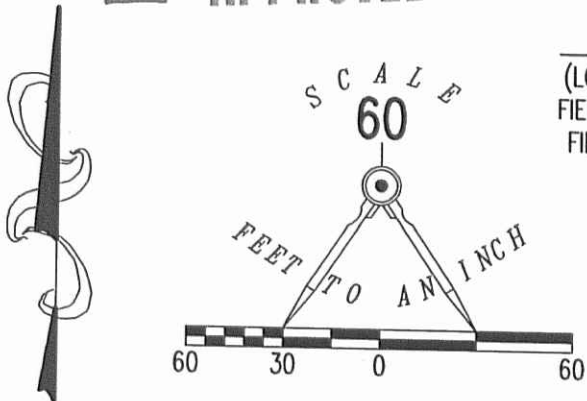
55630613





7-8-13

**APPROVED**

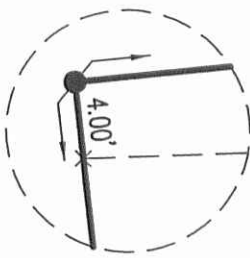


STATION 65+25  
(LOGAN COUNTY ENGINEER'S  
FIELD BOOK 314, PAGE 35 &  
FIELD BOOK 521, PAGE 38)

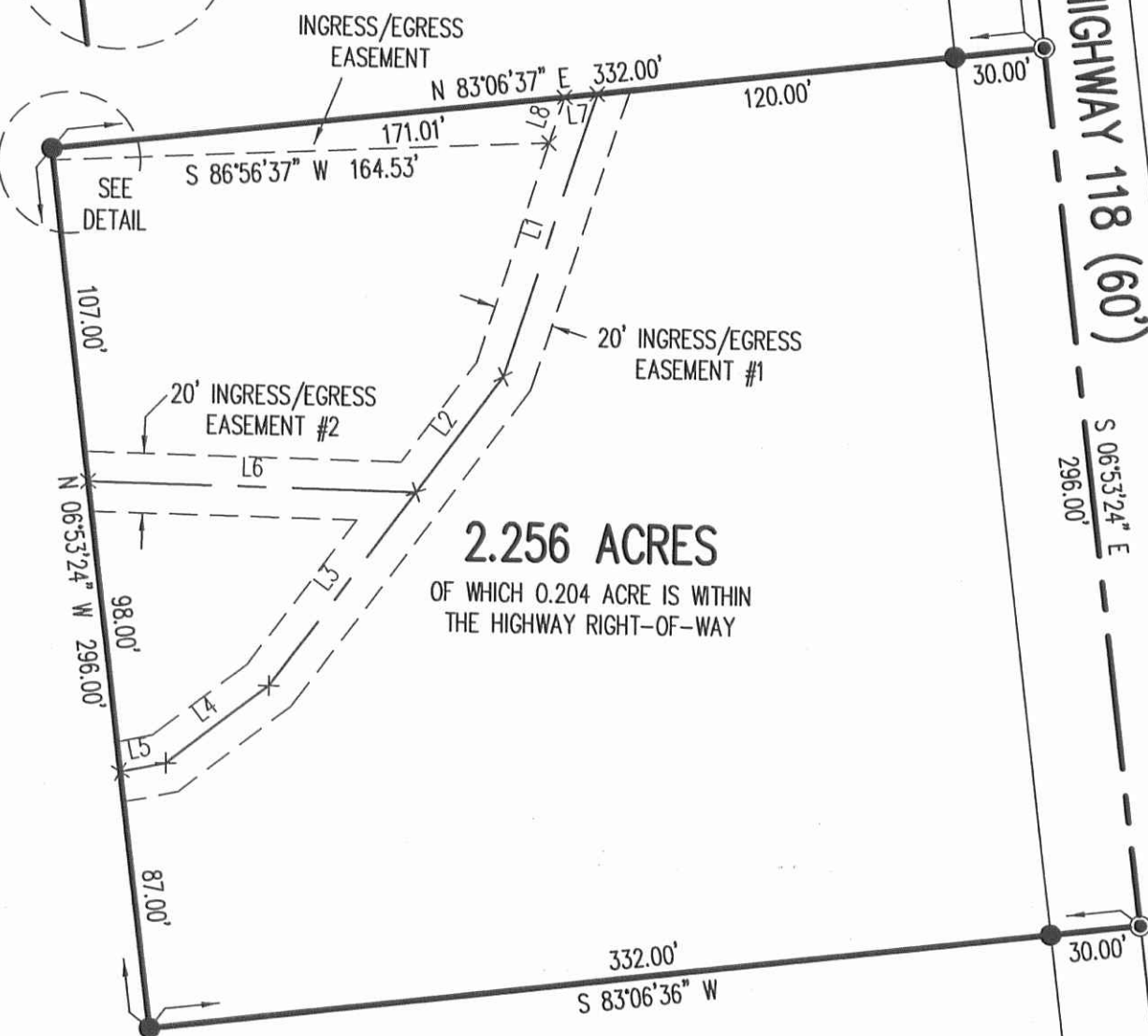
LEGEND:

- MAG NAIL SET
- 5/8 INCH IRON ROD FOUND
- 5/8 INCH IRON ROD SET WITH PLASTIC I.D. CAP STAMPED "LSM 7437"

**SURVEY OF 2.256 ACRES OUT OF THE  
LONGBRAKE FARMS LTD.  
ORIGINAL 207.1 ACRE TRACT  
OFFICIAL RECORD 1056, PAGE 840  
TRACT IX, PARCEL I  
VIRGINIA MILITARY SURVEY 9887  
RUSHCREEK TOWNSHIP  
LOGAN COUNTY, OHIO**



**DETAIL**  
NOT TO SCALE



**2.256 ACRES**  
OF WHICH 0.204 ACRE IS WITHIN  
THE HIGHWAY RIGHT-OF-WAY

LONGBRAKE FARMS LTD.  
ORIGINAL 207.1 ACRES  
O.R. 1056, PG. 840  
TRACT IX, PARCEL I

SURVEYED BY:

*William K. Bruce*

WILLIAM K. BRUCE  
PROFESSIONAL SURVEYOR 7437  
JUNE 26, 2013



COPYRIGHT 2013 BY:  
**LEE SURVEYING & MAPPING CO., INC.**  
117 North Madriver Street  
BELLEFONTAINE, OHIO 43311  
(937) 593-7335  
WWW.LSMINC.US  
surveys@lsminc.us

KSS D0613 55630613 L-5563-3

LINE	BEARING	DISTANCE
L1	S 17°38'56" W	99.50'
L2	S 36°09'40" W	48.50'
L3	S 36°09'40" W	81.42'
L4	S 51°59'16" W	42.91'
L5	S 77°59'32" W	15.31'
L6	N 88°58'26" W	108.60'
L7	S 83°06'37" W	10.99'
L8	S 17°38'56" W	16.49'

2 WORKING DAYS  
**BEFORE YOU DIG**  
CALL TOLL FREE **800-362-2764**  
OHIO UTILITIES PROTECTION SERVICE

INDEXED ON MAP  
6308 3P

ORIGINAL STAMP IN GREEN