

FUNK - DOUGLAS SURVEY

The following described real estate situated in the Unincorporated Village of Walnut Grove, Township of Rushcreek, County of Logan, State of Ohio and being a part of Virginia Military Survey No. 13646 and being more particularly described as follows;

Beginning at an iron bolt in the south line of V. M. S. No. 13646 and the north line of V. M. S. No. 3314 and at the intersection of the centerlines of C. H. No. 12 and C. H. No. 26 (West), said iron bolt also being the northwest corner to Elba Wilgus's present 0.88 Acre tract in V. M. S. No. 3314;

Thence with the centerline of C. H. No. 12, N. 17° 30' W. 82.50 feet to a R.R. Spike, at a southwest corner to Elbie Wilgus's present 1.15 Acre tract in V. M. S. No. 13646;

Thence with Wilgus's line the following four courses and distances, N. 84° 36' 20" E. 157.00 feet to an iron bar, passing through an iron bar at 30.68 feet, S. 17° 30' E. 57.75 feet to an iron bar, N. 84° 36' 20" E. 10.00 feet to an iron bar and S. 17° 30' E. 25.00 feet to an iron bar in the south line of V. M. S. No. 13646 and the north line of V. M. S. No. 3314;

Thence with the line between V. M. S. No. 13646 and V. M. S. No. 3314, S. 84° 36' 20" W. 167.00 feet to the place of beginning, passing through and iron bar at 136.32 feet, containing 0.297 Acres, more or less.

I hereby certify that this is a true and accurate description of a survey made by me on November 4, 1978.

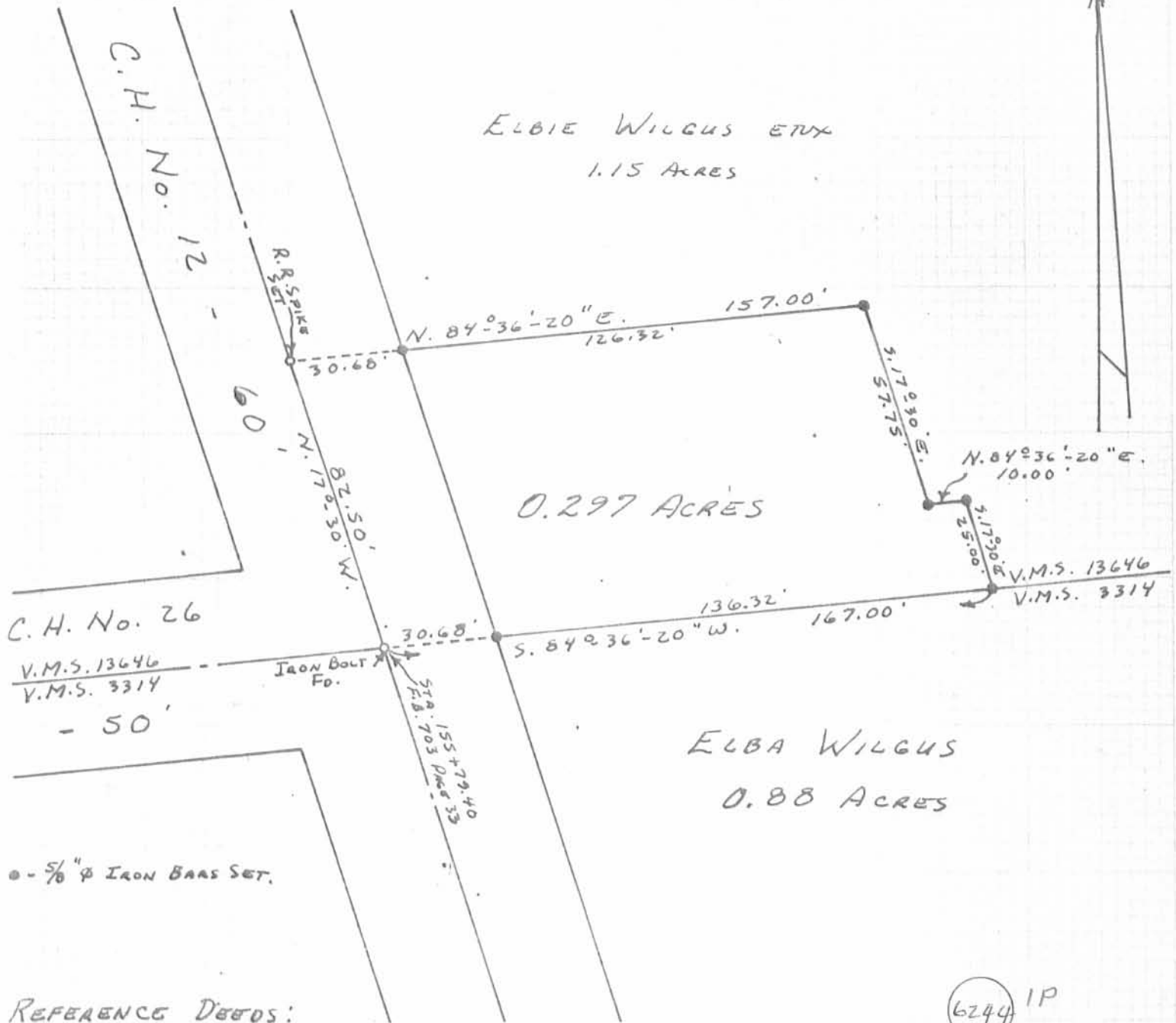
*Daniel E. Gilbert*  
Daniel E. Gilbert, P.S.  
Reg. Sur. No. 5402  
1041 N. Main St.  
Bellefontaine, Ohio 43311

1D  
6244

ELBIE WILGUS ETUX  
1.15 ACRES

0.297 ACRES

ELBA WILGUS  
0.88 ACRES



C.H. No. 26  
V.M.S. 13646  
V.M.S. 3314  
- 50'

Ø - 5/8" Ø IRON BARS SET.

REFERENCE DEEDS:  
VOL. 47 P. 116  
VOL. 47 P. 289  
VOL. 342 P. 332

6244 IP  
INDEXED ON MAP

SURVEYED AND PLATTED BY:  
DANIEL E. GILBERT, P.S.  
REG. SUR. No. 5402  
1041 N. MAIN ST.  
BELLEFONTAINE, OHIO 43311

FUNK-DOUGLAS SURVEY  
V.M.S. No. 13646  
UNINCORPORATED VILLAGE  
OF  
WALNUT GROVE  
RUSHCREEK TOWNSHIP  
LOGAN COUNTY, OHIO  
NOVEMBER 4, 1978

SCALE: 1" = 40'