

REC'D 8-28-00 SWY

# Lee Surveying and Mapping Co., Inc.

Land Surveys • Topography • Subdivisions • Construction Layout

117 N. Madriver St.  
Bellefontaine OH 43311



Phone: (937) 593-7335  
Fax: (937) 593-7444

## PATRICK 40.000 ACRES

Lying in Virginia Military Survey 9909, Rushcreek Township, Logan County, Ohio.

Being out of the Richard Patrick, Jane Burton, Ann Bush, Peggy Patrick and Lori Palmer original 77.53 acre tract as deeded and described in Official Record 451, Page 347, Parcel III of the Logan County Records of Deeds and being more particularly described as follows:

Beginning at a stone found at the southeast corner of Virginia Military Survey 9909 on the center-line of County Highway 20 (45 feet wide).

THENCE, with the north line of Virginia Military Survey 9887 and the center-line of County Highway 20, S 79°-30'-00" W, a distance of 1068.64 feet to a railroad spike set at the TRUE POINT OF BEGINNING.

THENCE, continuing with the north line of Virginia Military Survey 9887 and the center-line of County Highway 20, S 79°-30'-00" W, a distance of 635.95 feet to a MAG nail set.

THENCE, with the lines of the Richard D. Patrick 1.61 acre tract (Vol. 342, Pg. 571) the following three courses:

N 10°-30'-00" W, a distance of 350.00 feet to a 5/8 inch iron rod set, passing a 5/8 inch iron rod set at 22.50 feet.

S 79°-30'-00" W, a distance of 200.00 feet to a 5/8 inch iron rod set.

S 10°-30'-00" E, a distance of 350.00 feet to a MAG nail set, passing a 5/8 inch iron rod set at 327.50 feet.

THENCE, with the north line of Virginia Military Survey 9887 and the center-line of County Highway 20, S 79°-30'-00" W, a distance of 325.00 feet to a pk nail found.

THENCE, with the east line of the Connie Lee Horton 2.285 acre tract (O.R. 153, Pg. 407, Tract II), N 10°-43'-55" W, a distance of 1558.54 feet to a 6 inch wood post found, passing a 5/8 inch iron rod set at 22.50 feet.

THENCE, with the south line of the Connie Lee Horton 80.275 acre tract (O.R. 153, Pg. 407, Tract I), N 79°-14'-33" E, a distance of 1160.93 feet to a 5/8 inch iron rod set.

THENCE, S 10°-43'-55" E, a distance of 1563.76 feet to the place of beginning, passing a 5/8 inch iron rod set at 1541.26 feet.

Containing 40.000 acres of which 0.496 acre is within the highway right-of-way.

The basis for bearings is the center-line of County Highway 20 being S 79°-30'-00" W, and all other bearings are from angles and distances measured in a field survey by Lee Surveying and Mapping Co., Inc. on August 14, 2000.



Description prepared by:

William K. Bruce  
Professional Surveyor 7437  
August 16, 2000

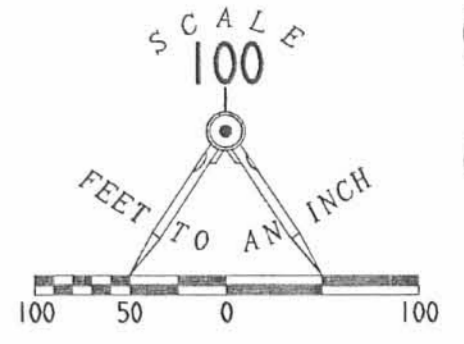


L-3001

REC'D 8-28-00 AMY BK

CONNIE LEE HORTON  
AND BRENDA FAY HORTON  
80.275 ACRES  
O.R. 153, PG. 407  
TRACT I

N 79° 14' 33" E  
1160.93'



LEGEND:

- 5/8 INCH IRON ROD SET
- ⊙ MAG NAIL SET
- ⊕ RAILROAD SPIKE SET
- ⊗ PK NAIL FOUND
- 6 INCH WOOD POST FOUND
- ⊠ STONE FOUND

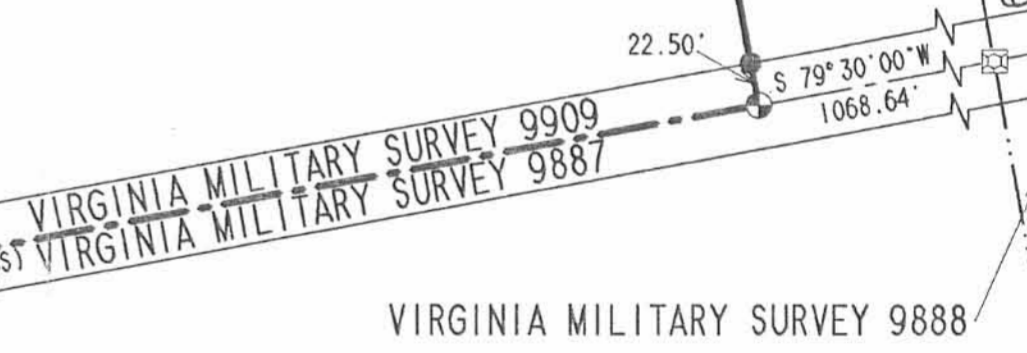
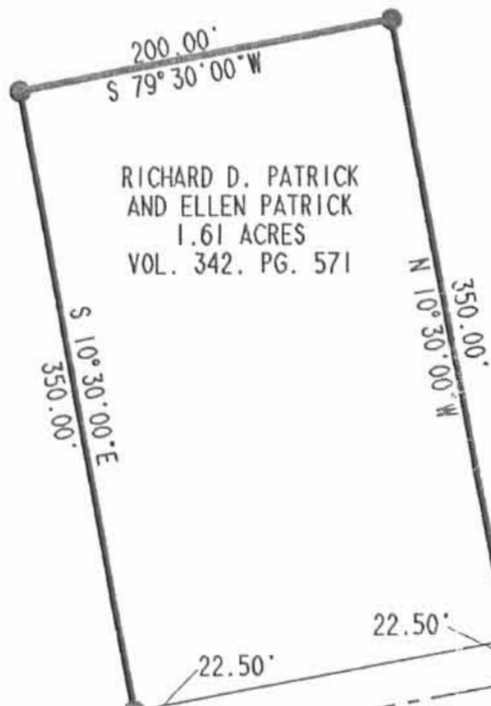
RICHARD PATRICK, JANE BURTON, ANN BUSH,  
PEGGY PATRICK AND LORI PALMER  
ORIG. 77.53 ACRE TRACT  
O.R. 451, PAGE 347, PARCEL III

40.000 ACRES  
OF WHICH 0.496 ACRE IS WITHIN  
THE HIGHWAY RIGHT-OF-WAY

N 10° 43' 55" W  
1558.54'

S 10° 43' 55" E  
1563.76'

CONNIE LEE HORTON  
AND BRENDA FAY HORTON  
2.285 ACRES  
O.R. 153, PG. 407  
TRACT II



COUNTY HIGHWAY 20 (45' R/W)

SURVEY OF 40.00 ACRES OUT OF THE  
RICHARD PATRICK, JANE BURTON, ANN BUSH,  
PEGGY PATRICK AND LORI PALMER  
ORIGINAL 77.53 ACRE TRACT  
OFFICIAL RECORD 451, PAGE 347, PARCEL III  
VIRGINIA MILITARY SURVEY 9909  
RUSHCREEK TOWNSHIP  
LOGAN COUNTY, OHIO



SURVEYED BY:  
*William K. Bruce*  
WILLIAM K. BRUCE  
PROFESSIONAL SURVEYOR 7437  
AUGUST 14, 2000

COPYRIGHT 2000 BY:  
LEE SURVEYING & MAPPING CO., INC.  
117 North Madriver Street  
BELLEFONTAINE, OHIO 43311  
(937) 593-7335

D-384 R/PATRICK L-3001-2

2 WORKING DAYS  
**BEFORE YOU DIG**  
CALL TOLL FREE 800-362-2764  
OHIO UTILITIES PROTECTION SERVICE

INDEXED ON MAP  
5180 IP

Patrick Survey

The following described real estate situated in the Township of Rushcreek, County of Logan, State of Ohio and being a part of Virginia Military Survey No. 9909 and being more particularly described as follows:

Beginning at a point in the centerline of C. H. No. 20 that is the southwest corner to Joe E. Patrick's present 79.14 Acre tract, said point also being in the south line of V. M. S. No. 9909;

Thence with the centerline of C. H. No. 20, N.  $84^{\circ} 15'$  E. 325.00 feet to a harrow tooth iron for the true place of beginning;

Thence continuing with the centerline of C. H. No. 20 and said V. M. S. Line, N.  $84^{\circ} 15'$  E. 200.00 feet to a harrow tooth iron;

Thence N.  $5^{\circ} 45'$  W. 350.00 feet to an iron bar, passing through an iron bar at 22.50 feet;

Thence S.  $84^{\circ} 15'$  W. 200.00 feet to an iron bar;

Thence S.  $5^{\circ} 45'$  E. 350.00 feet to the place of beginning, passing through an iron bar at 327.50 feet, containing 1.61 Acres, more or less.

The above described real estate being surveyed out of Joe E. Patrick's present 79.14 Acre tract.

I hereby certify that this a true and accurate description of a survey made by me on August 19, 1972.

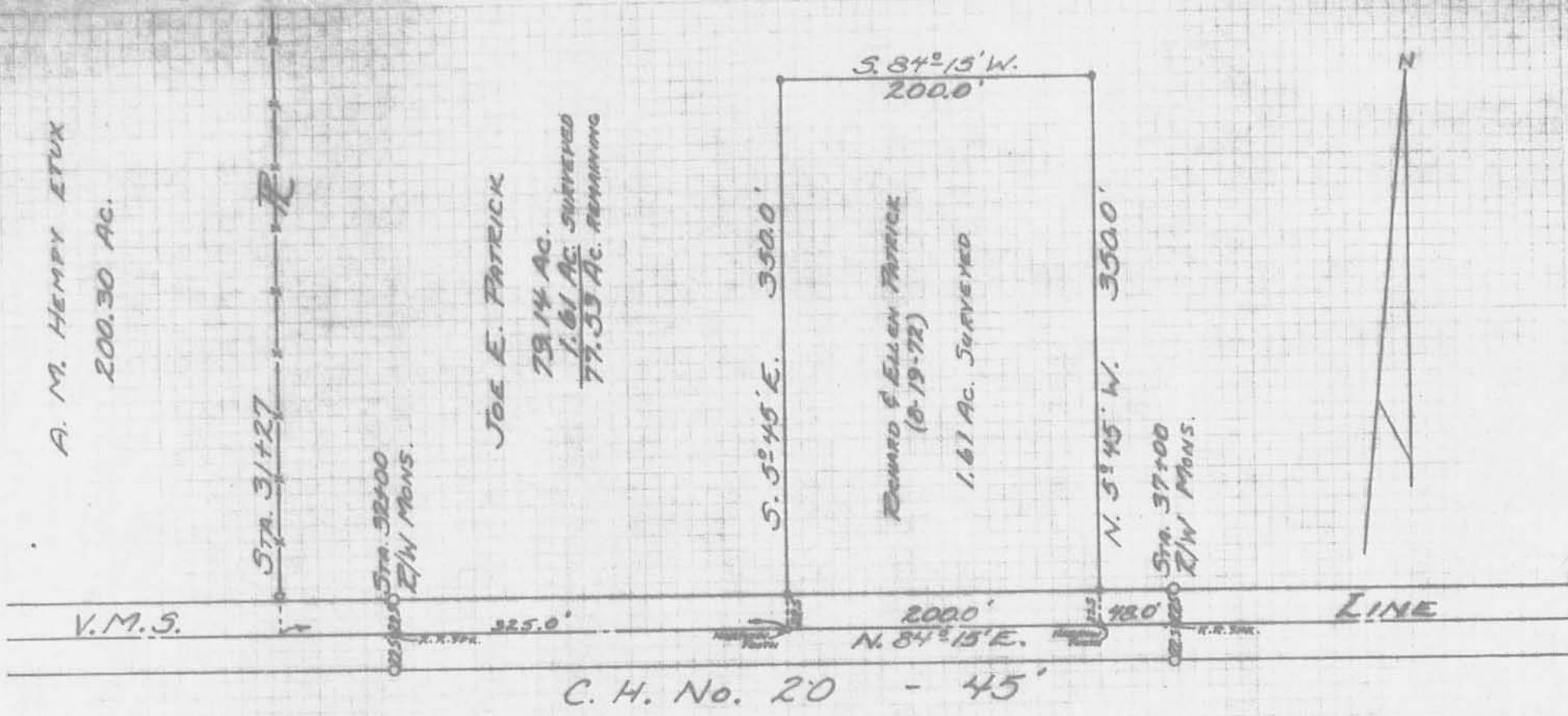
*Daniel E. Gilbert*  
Daniel E. Gilbert, P.S.  
Reg. Sur. No. 5402  
1041 N. Main St.  
Bellefontaine, Ohio 43311



2D

\$160

INDEXED ON MAP



REFERENCE:  
C. H. No. 20  
F.B. 701 Pg. 52

•- 3/8" IRON BARS SET.

SURVEYED AND PLATTED BY:  
DANIEL E. GILBERT, P.S.  
Pac. Sur. No. 5102  
1041 N. MAIN ST.  
COLUMBIANA, OHIO 43011

INDEXED ON MAP

(5180) 2P

PATRICK SURVEY  
V.M.S. No. 9909  
RUSHCREEK TOWNSHIP  
LOGAN COUNTY, OHIO  
AUGUST 19, 1972

SCALE: 1" = 100'

McGUFFEE & ESSER CO.  
8222 W. 51st A.

NO. 107  
K. L. GILBERT  
PACIFIC SURVEYING CO.  
1000 W. 10th St. S.W.  
MINNEAPOLIS, MN 55408

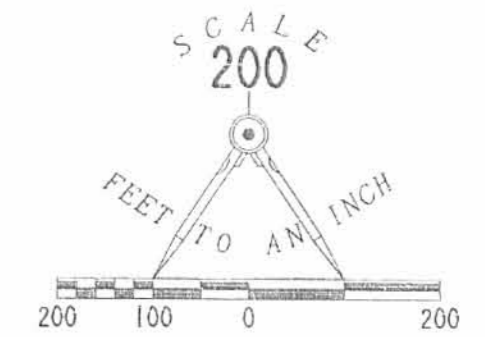
2 WORKING DAYS  
**BEFORE YOU DIG**  
 CALL TOLL FREE **800-362-2764**  
 OHIO UTILITIES PROTECTION SERVICE.

TATE D. STRATTON  
 24.159 ACRE TRACT  
 O.R. 335, PG 93

CONNIE LEE HORTON  
 80.275 ACRE TRACT  
 O.R. 153, PG. 407  
 TRACT I



RICHARD PATRICK  
 40.000 ACRE TRACT  
 O.R. 478, PG. 698  
 PARCEL II



- LEGEND
- 5/8 INCH IRON ROD SET
  - ⊙ MAG NAIL SET
  - ⊗ RAILROAD SPIKE FOUND
  - 5/8 INCH IRON ROD FOUND
  - ⊗ PK NAIL FOUND
  - ⊕ RAILROAD SPIKE OVER STONE FOUND

BOUNDARY SURVEY OF TWO TRACTS  
 OUT OF THE JAMES L. STEVE  
 AND REBECCA J. STEVE  
 ORIGINAL 54.53 ACRE TRACT  
 ORIGINAL 54.65 ACRE TRACT  
 AND 37.530 ACRE TRACT  
 OFFICIAL RECORD 504, PAGE 640  
 PARCEL I, TRACTS I AND II  
 AND PARCEL III  
 VIRGINIA MILITARY SURVEY 13709  
 VIRGINIA MILITARY SURVEY 9909  
 RUSHCREEK TOWNSHIP  
 LOGAN COUNTY, OHIO

SURVEYED BY:  
  
 JEFFREY I. LEE  
 PROFESSIONAL SURVEYOR 6359  
 JUNE 27, 2001



COPYRIGHT 2001 BY:  
 LEE SURVEYING & MAPPING CO., INC.  
 117 North Madriver Street  
 BELLEFONTAINE, OHIO 43311  
 (937) 593-7335

D-400 STEVE L-3171-2

INDEXED ON MAP  
 5100 3P



9-15-21  
**APPROVED**



INNOVATIVE IDEAS  
EXCEPTIONAL DESIGN  
UNMATCHED CLIENT SERVICE

**STEVE  
48.409 ACRES**

Situate in the State of Ohio, Logan County, Rushcreek Township and lying in Virginia Military Surveys 9909 and 13709, and being out of the 142.573 acres as conveyed to James L. Steve, Trustee and Rebecca J. Steve, Trustee by deed of record in Official Record 835, Page 844 (all records referenced herein refer to the Logan County Records of Deeds) and being more particularly described as follows:

**BEGINNING** at a railroad spike found on the center-line of County Highway 20 (45 feet wide) at the intersection of the southerly corner common to said Virginia Military Surveys 9909 and 13709 and northerly corner common to Virginia Military Surveys 9887 and 9888;

THENCE, South 84°-12'-14" West, a distance of 1068.45 feet, with said center-line and common line of said Virginia Military Survey 9909 and 9887, to a railroad spike found at a southerly corner common to said 142.573 acre and that 40.000 acre tract as conveyed to Richard D. Patrick and Ellen L. Patrick by deed of record in Official Record 478, Page 698, Parcel Two;

THENCE, North 06°-00'-45" West, a distance of 1563.80 feet, with the common line to said 142.573 acre and 40.000 acre tracts, passing a 5/8 inch iron rebar found at a distance of 22.50 feet, to a 5/8 inch iron rebar found at a northerly corner common to said 142.573 acre and 40.000 acre tract and being a southerly line of that 80.275 acre tract as conveyed to Mary E. Rostorfer by deed of record in Official Record 706, Page 571, Tract I;

THENCE, North 83°-56'-18" East, a distance of 1372.11 feet, with the line common to said 142.573 acre and 80.275 acre tracts and said line extended as a new division line, passing a 5/8 inch iron rebar found on the line common to Virginia Military Surveys 9909 and 13709 at a distance of 1067.52 feet to a 5/8 inch iron rebar set (with yellow cap stamped "DLZ OHIO INC.")

THENCE, South 04°-06'-09" East, a distance of 1568.67 feet, with a new division line through said 142.573 acre tract, passing a 5/8 inch iron rebar set (with yellow cap stamped "DLZ OHIO INC.") at a distance of 1546.15 feet, to a magnetic spike set on the center-line of said County

INDEXED ON MAP  
5180



INNOVATIVE IDEAS  
EXCEPTIONAL DESIGN  
UNMATCHED CLIENT SERVICE

Highway 20 and the common line to said Virginia Military Surveys 13709 and 9888;

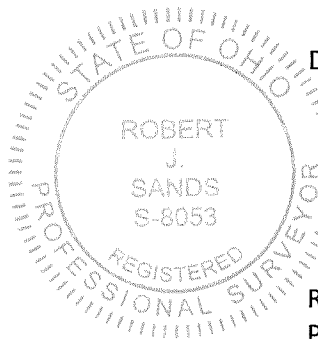
THENCE, South 83°-42'-35" West, a distance of 251.38 feet, with said center-line and said common Virginia Military Surveys, to the **POINT OF BEGINNING**.

Containing 48.409 acres, more or less, of which 0.682 acre is within the highway right-of-way. There are 38.401 acres within Virginia Military Survey 9909 and 10.008 acres within Virginia Military Survey 13709.

The bearings in the above description are based on the grid bearing of S 10°-01'-46" E, for the center-line of County Highway 5, as determined by a GPS network of field observations performed in August, 2021 and are based upon the Ohio State Plane Coordinate System, North Zone, NAD83 (2011).

All rebar set are 5/8 inch in diameter and 30 inches in length, with a yellow cap stamped "DLZ OHIO INC."

I certify that this description is based upon a survey conducted under my direct supervision in August, 2021 and that it and the information contained herein are true and correct to the best of my knowledge.

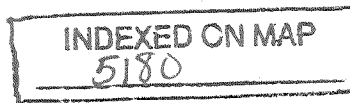


DLZ Ohio, Inc.

*Robert J. Sands 09/10/21*

Robert J. Sands  
Professional Surveyor No. 8053

2121-2134.00





APPROVED

9-15-21



INNOVATIVE IDEAS  
EXCEPTIONAL DESIGN  
UNMATCHED CLIENT SERVICE

**STEVE  
94.154 ACRES**

Situate in the State of Ohio, Logan County, Rushcreek Township and lying in Virginia Military Survey 13709, and being out of the 142.573 acres as conveyed to James L. Steve, Trustee and Rebecca J. Steve, Trustee by deed of record in Official Record 835, Page 844 (all records referenced herein refer to the Logan County Records of Deeds) and being more particularly described as follows:

**BEGINNING** at a stone found in a monument box on the intersection of the center-lines of County Highway 20 (45 feet wide) and County Highway 5 (60 feet wide) and being on a line common to said Virginia Military Surveys 13709 and Virginia Military Survey 9888;

THENCE, South 83°-42'-35" West, a distance of 1908.89 feet, with said center-line of County Highway 20 and common lines of said Virginia Military Surveys 13709 and 9888, to a magnetic spike set;

THENCE, with new division lines through said 142.573 acre tract:

North 04°-06'-09" West, a distance of 1568.67 feet, passing a 5/8 inch iron rebar set (with yellow cap stamped "DLZ OHIO INC.") at a distance of 22.52 feet, to a 5/8 inch iron rebar set (with yellow cap stamped "DLZ OHIO INC.");

S 83°-56'-18" W, a distance of 304.59 feet to a 5/8 inch iron rebar found at a corner common to said 142.573 acre tract and that 80.275 acre tract as conveyed to Mary E. Rostorfer by deed of record in Official Record 706, Page 571, Tract I and being on a line common to said Virginia Military Survey 13709 and Virginia Military Survey 9909;

THENCE, North 06°-02'-09" West, a distance of 708.16 feet, with the line common to said 142.573 acre and 80.275 acre tracts and said Virginia Military Surveys, to a 5/8 inch iron rebar found at the northwest corner of said Virginia Military Survey 13709, the southwest corner to Virginia Military Survey 12536 and on the easterly line of said 80.275 acre tract and being a corner common to said 142.573 acre tract and that 24.159 acre tract

INDEXED ON MAP  
5180





INNOVATIVE IDEAS  
EXCEPTIONAL DESIGN  
UNMATCHED CLIENT SERVICE

as conveyed to Tate D. Stratton and Hayley M. Stratton by deed of record in Official Record 820, Page 735;

THENCE, North 83°-13'-30" East, a distance of 2000.61 feet, with a line common to said 142.573 acre and 24.159 acre tracts and said Virginia Military Survey 13709 and Virginia Military Survey 12536, passing a 5/8 inch iron rebar found at a distance of 1970.32 feet, to a MAG spike set on the center-line of said County Highway 5;

THENCE, South 10°-01'-46" East, a distance of 1116.54 feet, with said center-line, to a magnetic nail set at a corner common to said 142.573 acre tract and that 5.000 acre tract as conveyed to Donald L. Tapp and Susan L. Glegg by deed of record in Official Record 746, Page 247;

THENCE, with lines common to said 142.573 acre and 5.000 acre tracts:

South 81°-43'-24" West, a distance of 660.40 feet to a 5/8 inch iron rebar found, passing a 5/8 inch iron rod found at a distance of 29.84 feet;

South 10°-01'-45" East, a distance of 329.86 feet to a 5/8 inch iron rebar found;

North 81°-45'-27" East, a distance of 660.42 feet to a magnetic spike set on said center-line, passing a 5/8 inch iron rebar found at a distance of 629.40 feet;

THENCE, South 10°-01'-46" East, a distance of 851.92 feet, with said center-line, to the **POINT OF BEGINNING**.

Containing 94.154 acres, more or less, of which 2.325 acres are within the highway rights-of-way.

The bearings in the above description are based on the grid bearing of S 10°-01'-46" E, for the center-line of County Highway 5, as determined by a GPS network of field observations performed in August, 2021 and are based upon the Ohio State Plane Coordinate System, North Zone, NAD83 (2011).

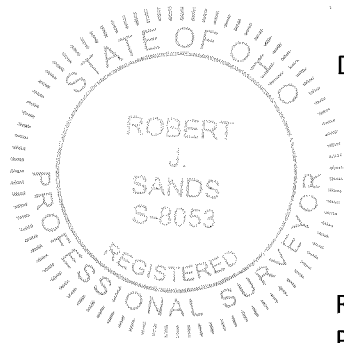




INNOVATIVE IDEAS  
EXCEPTIONAL DESIGN  
UNMATCHED CLIENT SERVICE

All rebar set are 5/8 inch in diameter and 30 inches in length, with a yellow cap stamped "DLZ OHIO INC."

I certify that this description is based upon a survey conducted under my direct supervision in August, 2021 and that it and the information contained herein are true and correct to the best of my knowledge.



DLZ Ohio, Inc.

Robert J. Sands  
Professional Surveyor No. 8053

2121-2134.00



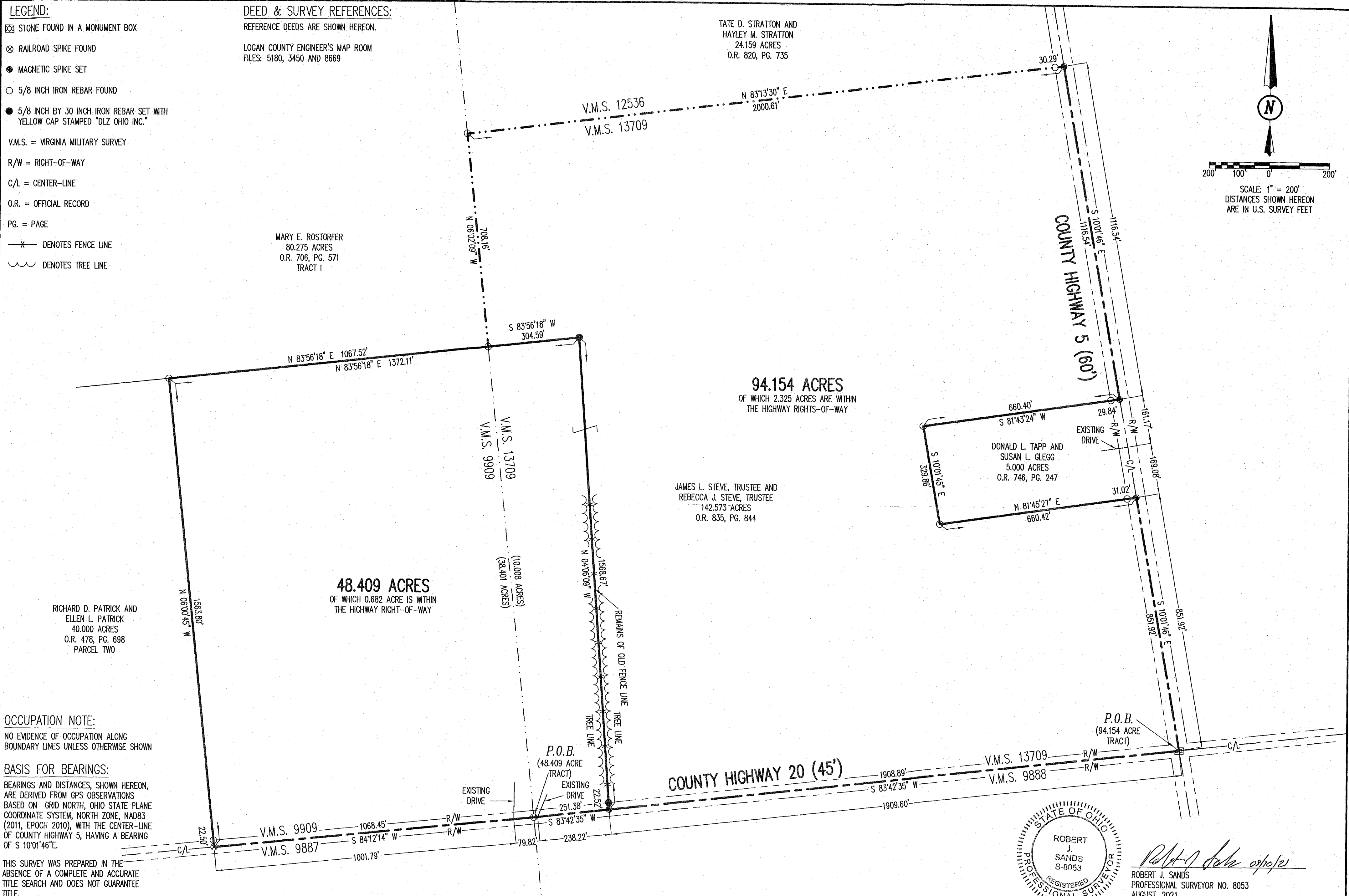
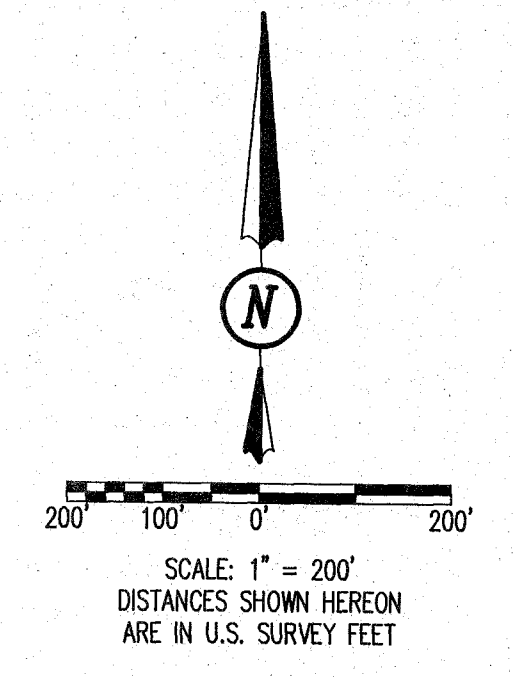
9-15-21  
**APPROVED**

- LEGEND:**
- ☒ STONE FOUND IN A MONUMENT BOX
  - ⊗ RAILROAD SPIKE FOUND
  - MAGNETIC SPIKE SET
  - 5/8 INCH IRON REBAR FOUND
  - 5/8 INCH BY 30 INCH IRON REBAR SET WITH YELLOW CAP STAMPED "DLZ OHIO INC."
- V.M.S. = VIRGINIA MILITARY SURVEY  
 R/W = RIGHT-OF-WAY  
 C/L = CENTER-LINE  
 O.R. = OFFICIAL RECORD  
 PG. = PAGE
- X— DENOTES FENCE LINE  
 ~~~~~ DENOTES TREE LINE

**DEED & SURVEY REFERENCES:**  
 REFERENCE DEEDS ARE SHOWN HEREON.  
 LOGAN COUNTY ENGINEER'S MAP ROOM  
 FILES: 5180, 3450 AND 8669

MARY E. ROSTORFER  
 80.275 ACRES  
 O.R. 706, PG. 571  
 TRACT 1

TATE D. STRATTON AND  
 HAYLEY M. STRATTON  
 24.159 ACRES  
 O.R. 820, PG. 735



**OCCUPATION NOTE:**  
 NO EVIDENCE OF OCCUPATION ALONG BOUNDARY LINES UNLESS OTHERWISE SHOWN

**BASIS FOR BEARINGS:**  
 BEARINGS AND DISTANCES, SHOWN HEREON, ARE DERIVED FROM GPS OBSERVATIONS BASED ON GRID NORTH, OHIO STATE PLANE COORDINATE SYSTEM, NORTH ZONE, NAD83 (2011, EPOCH 2010), WITH THE CENTER-LINE OF COUNTY HIGHWAY 5, HAVING A BEARING OF S 10°01'46" E.

THIS SURVEY WAS PREPARED IN THE ABSENCE OF A COMPLETE AND ACCURATE TITLE SEARCH AND DOES NOT GUARANTEE TITLE.

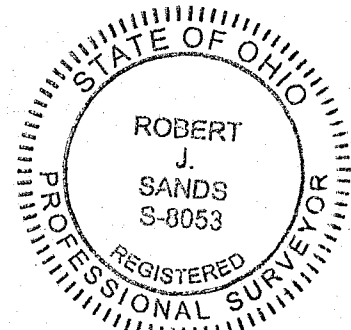
**ACCESS MANAGEMENT NOTE:**  
 COUNTY HIGHWAY 20 IS CLASSIFIED AS A LOCAL ROAD.  
 MINIMUM DRIVE SPACING IS 250'  
 MINIMUM STOPPING SIGHT DISTANCE IS >495 (55 MPH)  
 COUNTY HIGHWAY 5 IS CLASSIFIED AS A MAJOR COLLECTOR ROAD  
 MINIMUM DRIVE SPACING IS 495'  
 MINIMUM STOPPING SIGHT DISTANCE IS >495 (55 MPH)

COPYRIGHT 2021 BY:

117 N. Madriver Street - Bellefontaine, OH 43311  
 (937) 593-7335 - www.dlz.com  
 Project #2121-2134.00

**SURVEY OF TWO TRACTS**  
 VIRGINIA MILITARY SURVEYS 9909 & 13709  
 RUSHCREEK TOWNSHIP  
 LOGAN COUNTY, OHIO

INDEXED ON MAP  
 5180



*Robert J. Sands*  
 ROBERT J. SANDS  
 PROFESSIONAL SURVEYOR NO. 8053  
 AUGUST, 2021

| DRAWN BY: | DESCRIPTION | REV. NO. | DATE |
|-----------|-------------|----------|------|
|           |             |          |      |
|           |             |          |      |
|           |             |          |      |
|           |             |          |      |



5-13-22  
**APPROVED**



INNOVATIVE IDEAS  
EXCEPTIONAL DESIGN  
UNMATCHED CLIENT SERVICE

**STEVE, TRUSTEES  
6.828 ACRES**

Situate in the State of Ohio, Logan County, Rushcreek Township and lying in Virginia Military Surveys 9909 and 13709, and being out of the 48.409 acres as conveyed to James L. Steve, Trustee of the James L. Steve Trust dated June 28, 2006, as amended and Rebecca J. Steve, Trustee of the Rebecca J. Steve Trust dated June 28, 2006, as amended by deed of record in Official Record 1404, Page 599 (all records referenced herein refer to the Logan County Records of Deeds) and being more particularly described as follows:

BEGINNING at a railroad spike found on the center-line of County Highway 20 (45 feet wide) at the corner common to Virginia Military Surveys 13709, 9888, 9887 and 9909;

THENCE, South 84°-12'-14" West, a distance of 98.62 feet, with said center-line and common to said Virginia Military Surveys 9887 and 9909, to a Magnetic nail set:

THENCE, with new division lines through said 48.409 acre tract;

North 04°-06'-09" West, a distance of 850.00 feet, passing a 5/8 inch iron rebar set (I.D. cap stamped "DLZ OHIO INC.") at a distance of 22.51 feet, to a 5/8 inch iron rebar set (I.D. cap stamped "DLZ OHIO INC."); and

North 83°-50'-56" East, a distance of 350.00 feet to a 5/8 inch iron rebar set (I.D. cap stamped "DLZ OHIO INC.") on a line common to said 48.409 acre tract and that 94.154 acre tract conveyed to David J. Rostorfer and Marcella Rostorfer by deed of record in Official Record 1402, Page 2764;

THENCE, South 04°-06'-09" East, a distance of 850.00 feet, with said common-line, passing a 5/8 inch iron rebar found (I.D. cap stamped "DLZ OHIO INC.") at a distance of 827.48 feet to a magnetic spike found on the center-line of said County Highway 20 and the line common to Virginia Military Surveys 13709 and 9888;

THENCE, South 83°-42'-35" West, a distance of 251.38 feet, with said center-line and said Virginia Military Survey lines, to the POINT OF BEGINNING.

INDEXED ON MAP  
5180

117 N Madriver St, Bellefontaine, OH 43311 | OFFICE 937.593.7335 | ONLINE WWW.DLZ.COM

S-13-22



APPROVED



INNOVATIVE IDEAS  
EXCEPTIONAL DESIGN  
UNMATCHED CLIENT SERVICE

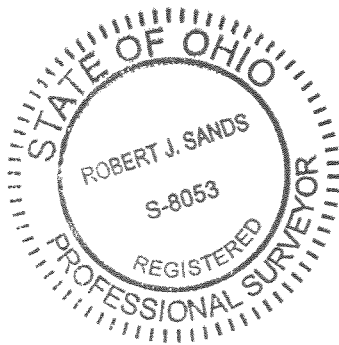
Containing 6.828 acres, more or less, of which 0.181 acre is within the highway right-of-way. There are 1.643 acres within Virginia Military Survey 9909 and 5.185 acres are within Virginia Military Survey 13709.

The bearings in the above description are based on the grid bearing of South 83°-42'-35" West for the north line of Virginia Military Survey 13079 as determined by a GPS network of field observations performed in April, 2022 and are based upon the Ohio State Plane Coordinate System, North Zone, NAD83 (2011).

All rebar set are 5/8 inch in diameter and 30 inches in length, with a yellow cap stamped "DLZ OHIO INC."

I certify that this description is based upon a survey conducted under my direct supervision in April, 2022 and that it and the information contained herein are true and correct to the best of my knowledge.

DLZ Ohio, Inc.



*Robert J. Sands 04/29/22*

Robert J. Sands  
Professional Surveyor No. 8053

2221-2134.00

INDEXED ON MAP  
5180

5-13-22

APPROVED

**SURVEY OF 6.828 ACRES**  
 VIRGINIA MILITARY SURVEYS 9909 & 13709  
 RUSHCREEK TOWNSHIP  
 LOGAN COUNTY, OHIO

JAMES L. STEVE, TRUSTEE OF  
 THE JAMES L. STEVE TRUST DATED  
 JUNE 28, 2006, AS AMENDED AND  
 REBECCA J. STEVE, TRUSTEE OF  
 THE REBECCA J. STEVE TRUST  
 DATED JUNE 28, 2006,  
 AS AMENDED  
 48.409 ACRES  
 O.R. 1404, PG. 599

DAVID J. ROSTORFER AND  
 MARCELLA ROSTORFER  
 94.154 ACRES  
 O.R. 1402, PG. 2764

N 83°50'56" E  
 350.00'



SCALE: 1" = 100'  
 DISTANCES SHOWN HEREON  
 ARE IN U.S. SURVEY FEET

**DEED & SURVEY REFERENCES:**  
 DEED REFERENCES ARE SHOWN HEREON.

LOGAN COUNTY ENGINEER'S MAP ROOM  
 FILES: 5180, 3450 AND 8669

**LEGEND:**

- ⊗ RAILROAD SPIKE FOUND
- MAGNETIC SPIKE FOUND
- MAGNETIC NAIL SET
- 5/8 INCH IRON REBAR FOUND
- 5/8 INCH BY 30 INCH IRON REBAR SET WITH YELLOW CAP STAMPED "DLZ OHIO INC."

V.M.S. = VIRGINIA MILITARY SURVEY

R/W = RIGHT-OF-WAY

C/L = CENTER-LINE

O.R. = OFFICIAL RECORD

PG. = PAGE

—\*— DENOTES FENCE LINE

~ DENOTES TREE LINE

**6.828 ACRES**  
 OF WHICH 0.181 ACRE IS WITHIN  
 THE HIGHWAY RIGHT-OF-WAY

V.M.S. 13709  
 V.M.S. 9909

N 04°06'09" W  
 850.00'

(5.185 ACRES)  
 (1.643 ACRES)

EXISTING  
 DRIVES

P.O.B. 251.38'  
 S 83°42'35" W  
 244.42'

**COUNTY HIGHWAY 20 (45')**

R/W V.M.S. 13709  
 C/L V.M.S. 9888  
 R/W

**ACCESS MANAGEMENT NOTE:**

COUNTY HIGHWAY 20 IS CLASSIFIED AS A LOCAL ROAD.  
 MINIMUM DRIVE SPACING IS 250'  
 MINIMUM STOPPING SIGHT DISTANCE IS >495 (55 MPH)  
 (NO NEW DRIVE IS BEING CONSTRUCTED)

**OCCUPATION NOTE:**

NO EVIDENCE OF OCCUPATION ALONG  
 BOUNDARY LINES UNLESS OTHERWISE SHOWN

**BASIS FOR BEARINGS:**

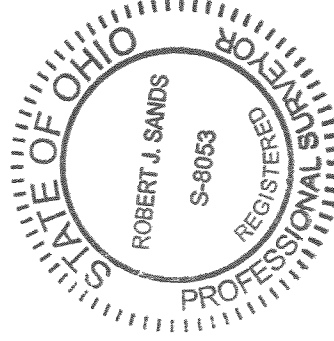
BEARINGS AND DISTANCES, SHOWN HEREON, ARE  
 DERIVED FROM GPS OBSERVATIONS BASED ON  
 GRID NORTH, OHIO STATE PLANE COORDINATE  
 SYSTEM, NORTH ZONE, NAD83 (2011, EPOCH  
 2010), WITH THE NORTH LINE OF V.M.S. 13079,  
 HAVING A BEARING OF S 83°-42'-35" W.

**CERTIFICATION:**

THIS PLAT WAS PREPARED BY DLZ OHIO, INC. AND IS A  
 TRUE AND ACCURATE REPRESENTATION, TO THE BEST OF  
 MY KNOWLEDGE AND BELIEF, OF A SURVEY MADE BY  
 THE SAME IN APRIL, 2022.

THIS SURVEY WAS PERFORMED WITHOUT THE BENEFIT OF  
 A TITLE POLICY; ALL OWNERSHIP SHOWN IS BASED UPON  
 RECORD DATA ACQUIRED AT THE TIME OF SURVEY, NO  
 GUARANTEE IS PLACED UPON ACTUAL OWNERSHIP OF  
 ANY PROPERTY.

EASEMENTS MAY EXIST ON SUBJECT PROPERTY THAT  
 WOULD BE REVEALED IN A TITLE EXAMINATION.



*Robert J. Sands* 04/29/22  
 ROBERT J. SANDS  
 PROFESSIONAL SURVEYOR NO. 8053  
 APRIL, 2022

COPYRIGHT 2022 BY:



117 N. Madriver Street • Bellefontaine, OH 43311  
 (937) 593-7335 • www.dlz.com  
 Project #2221-0000.00

| DRAWN BY: | DESCRIPTION | REV. NO. | DATE      |
|-----------|-------------|----------|-----------|
| KSS       |             |          | 4/19/2022 |
|           |             |          |           |
|           |             |          |           |
|           |             |          |           |

INDEXED ON MAP

5180