

Sims Gas Co.  
Levels at gas well Cook Farm  
Rushcreek Twp. V.M.S. 9975

+S. H.I. -S. Elev.

B.M. 5.46 1101.67 1096.21

T.P. 3.83 1103.57 1.93 1099.74

0.64 1102.93

T.P. 4.23 1097.21 10.59 1092.98

4.61 1092.60

4.16 1093.05

Jan. 14 1932

Clear

Windy

M<sup>th</sup> = Kirshan

60

B.M. R.R. spike in walnut Gov. lands  
N.E. cor. X Roads at Whitetown  
See Page 32

(Bottom of corner stripes S.W. cor  
of Cook corn crib Building  
farthest south)

Top of collar 5 $\frac{1}{2}$ ' pipe at gas well  
Floor at well

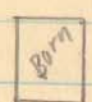
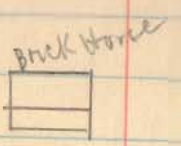
(over)

# Sims Gas Co. (continued)

V.M.S. 9974

INDEXED ON MAP

4438



Bernice B. Porter

V.M.S. 9974

Gas Mill  
 Top of casing  
 1028.87

Loughlin Ditch

Elizabeth  
Dobbins

V.M.S. 9975

Branch of Miami

Gas Mill  
 Top of casing  
 1092.60

John W. Stucken

L.A. Cook

S.H. 226  
 Route 273

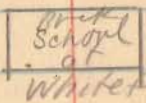
B.M. corner  
 S.H. 226  
 Route 273  
 Walnut

L.A. Cook

S.H. 592  
 Route 273

Road 42

John W. Stucken



V.M.S. 9975

To Belleair

To Belleair

